

# TEST REPORT

**Applicant:** SHENZHEN ISANGX TECHNOLOGY CO., LTD.  
**Address:** Floor4, Bldg 10, Xin Xin Tian Industrial Park, Xinsha Rd., ShaJing St., BaoAn District, ShenZhen GuangDong Province  
**Manufacturer:** SHENZHEN ISANGX TECHNOLOGY CO., LTD.  
**Address:** Floor4, Bldg 10, Xin Xin Tian Industrial Park, Xinsha Rd., ShaJing St., BaoAn District, ShenZhen GuangDong Province

The following sample(s) was /were submitted and identified on behalf of the clients as :

**Sample Name:** 16 inch business LCD writing board  
**Model Number:** ASYW1416W  
ASYW1416A, ASYW1216A, ASYW1016A, ZH16  
**Labeled Age Grading:** Over 3 years  
**Requested Age:** Over 3 years  
**Age Group Assessed As:** Over 3 years  
**Sample Received Date:** May 23, 2022  
**Testing Period:** May 23, 2022 - May 30, 2022  
**Report No.:** SiCT2205230400R  
**Test Requested:** EN 71-1:2014+A1:2018, EN 71-2:2020, EN 71-3:2019+A1:2021  
**Test Method:** Please refer to the following page(s).  
**Test Result(s):** Please refer to the following page(s).  
**Test Conclusion:** The test results comply with the limits of EU Toys directive 2009/48/EC .

Compiled by:



Daisy Wei

Reviewed by:



Sky Wang

Approved by:



Andy Wang/Manager



*This test report is based on a single evaluation of one sample of above mentioned products. It is not permitted to be duplicated in extracts without written approval of Shenzhen SiCT Technology Co., Ltd.*

**TEST REPORT****EN 71-1, EN 71-2, EN 71-3 SAFETY OF TOYS****PART 1. SAFETY OF TOYS. MECHANICAL AND PHYSICAL PROPERTIES****PART 2.SAFETY OF TOYS. FLAMMABILITY****PART 3. MIGRATION OF CERTAIN ELEMENTS**

Conclusion:

<b>Tested Sample</b>	<b>Standard/Regulation</b>	<b>Conclusion</b>
Submitted sample	EN 71 Part 1: 2014+A1:2018	Pass
	EN 71 Part 2: 2020	Pass
Tested components of submitted sample	EN 71 part 3: 2019+A1:2021	Pass

## Test Result

### 1. Mechanical and Physical

As per European standard on safety of toys EN 71-1: 2014+A1:2018

<u>Clause</u>	<u>Description</u>	<u>Result</u>
4	General requirements	-
4.1	Material (by visual assessment).....	Pass
4.2	Assembly.....	Pass
4.3	Flexible plastics sheeting.....	N/A
4.4	Toy bags .....	N/A
4.5	Glass .....	N/A
4.6	Expanding materials .....	N/A
4.7	Edges .....	Pass
4.8	Points and metallic wires .....	N/A
4.9	Protruding parts .....	N/A
4.10	Parts moving against each other:	-
4.10.1	Folding and sliding mechanisms .....	N/A
4.10.2	Driving mechanisms .....	N/A
4.10.3	Hinges .....	N/A
	(Not applicable to products with a hinged part that has a mass less than 250g.)	-
4.10.4	Springs .....	N/A
4.11	Mouth-actuated toys .....	N/A
4.12	Balloons .....	N/A
4.13	Cords of toy kites and other flying toys .....	N/A
4.14	Enclosures:	-
4.14.1	Toys which a child can enter .....	N/A
4.14.2	Masks and helmets .....	N/A
4.15	Toys intended to bear the mass of a child.....	N/A
4.15.1	Toys propelled by the child or by other means .....	N/A
4.15.2	Free-wheeling toy Rocking Dinosaurs.....	N/A
4.15.3	Rocking horses and similar toys .....	N/A
4.15.4	Toys not propelled by a child .....	N/A
4.15.5	Toys scooters.....	N/A
4.16	Heavy immobile toys .....	N/A

4.17	Projectiles .....	N/A
4.18	Aquatic toys .....	N/A
4.19	Percussion caps specifically designed for use in toys.....	N/A
4.20	Acoustics .....	N/A
4.21	Toys containing a heat source .....	N/A
4.22	Small balls .....	N/A
4.23	Magnets.....	N/A
5	Toys intended for children under 36 months	-
5.1	General requirements	Pass
5.1a	Small part requirement on toys & removable	Pass
	Components (Test method 8.2) .....	Pass
5.1b	Torque test (Test method 8.3) .....	Pass
	Tension test (Test method 8.4) .....	Pass
	Drop test (Test method 8.5) .....	Pass
	Impact test (Test method 8.7) .....	Pass
	Compression test (Test method 8.8) .....	N/A
	Sharp edge (Test method 8.11) .....	N/A
	Sharp point (Test method 8.12) .....	N/A
5.1c	Potential hazardous metal points and wires with a cross section of 2mm or less .....	N/A
5.1d	Tip over test for Large and bulky toys (Test method 8.6).....	N/A
5.1e	Glued wooden toys and toys with glued on plastic decals .....	N/A
5.1f	Splinters .....	N/A
5.1g	The casing of toys intended for children too young to sit up unaided .....	N/A
5.1h	Foam toys and toys containing accessible foam components.....	N/A
5.2	Filling materials .....	Pass
5.3	Plastic sheeting .....	Pass
5.4	Cords on toys .....	N/A
5.5	Liquid-filled toys .....	N/A
5.6	Speed limitation of electrically driven toys .....	N/A
5.7	Glass and porcelain .....	N/A
5.8	Shape and size of certain toys .....	N/A
5.9	Toys comprising monofilament fibres .....	N/A
5.10	Small balls.....	N/A
5.11	Play figures.....	N/A

5.12	Hemispheric-shaped toys.....	N/A
5.13	Suction cups.....	N/A
6	Packaging .....	Pass
7	Warnings and instructions for use.....	Pass
7.1	General requirements.....	See Remark 1
	(Remark 1: It is drawn to your attention that the name and address of importer in EEC country and the advice statement for keeping relevant information together with CE-marking should appear as specified in clause 7.1 of this standard.)	Pass
7.2	Toys not intended for children under 36 months .....	N/A
	(Remark : Toys are small parts as received / become detached as small part after test / (the cord on toy present potential entanglement hazard). It is acceptable because appropriate age warning was found on the packaging.)	N/A
	(Remark : Toys are small parts as received / become detached as small part after test. In order to comply with the requirements of this clause, the toy or its packaging must be marked with "Not suitable for children under 3 years due to small part.")	N/A
	(Remark : No hazard specified in clause 5 was found both before and after abuse test.)	N/A
	(Remark : Age warning should not be required for toys manifestly unsuitable for children under 36 months.)	N/A
	(Remark: No small part was found before and after test.)	N/A
7.3	Latex balloon .....	N/A
7.4	Aquatic toys .....	N/A
7.5	Functional toys .....	N/A
7.6	Hazardous sharp functional edges and points .....	N/A
7.7	Projectiles.....	N/A
7.8	Imitation protective masks and helmets .....	N/A
7.9	Toy kites .....	N/A
7.10	Roller skates, inline skates and toy skateboards .....	N/A
7.11	Toys intended to be strung across a cradle, cot, or perambulator .....	N/A
7.12	Liquid-filled teethers .....	N/A
7.13	Percussion caps specifically designed for use in toys .....	N/A
7.14	Acoustics .....	N/A
7.15	Toys Rocking Dinosaur .....	N/A
7.16	Toys intended to bear the mass of a child .....	Pass
7.17	Toys comprising monofilament fibres .....	N/A
7.18	Toy scooters .....	N/A
7.19	Rocking horses and similar toys.....	N/A
7.20	Magnetic/electrical experimental sets.....	Pass
<b>(I)</b>	<b>Mechanical and Physical Properties</b>	-
	General requirements.....	Pass

	Material.....	Pass
	Toy bags.....	N/A
	Glass.....	N/A
	Edges.....	Pass
	Points and wires.....	N/A
	Parts moving against each other.....	N/A
	Hinges.....	N/A
	Packaging.....	Pass
	Warnings and Instructions for use General The name and/of trade name and/of mark and address of the manufacturer of his authorised representative of the importer CE-marking	Pass

N/A = Not Applicable

## 2. Flammability

As per European standard on safety of toys EN 71 Part 2: 2020.

<u>Clause</u>	<u>Description</u>	<u>Result</u>
4.1	General requirements	Pass

Remark: Only applicable clauses were shown.

**3. Migration of Certain Elements**

As per European standard on safety of toys EN 71 part 3:2019+A1:2021, determined by inductively coupled plasma optical emission spectrometer.

**Sample Description:**

No.	Name
1	Blue plastic
2	Black handwriting screen
3	Transparent label
4	White thread

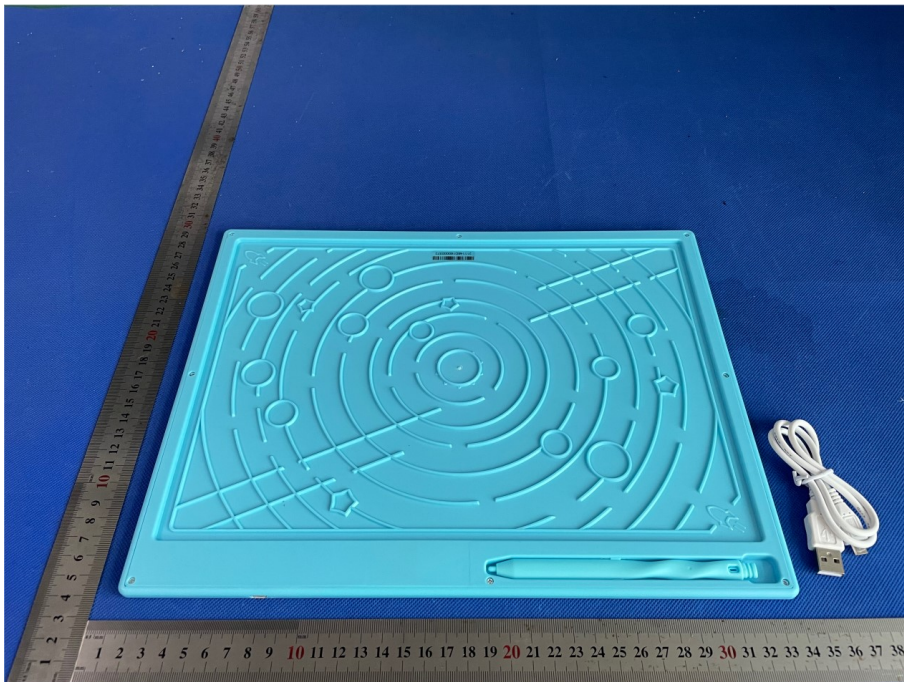
Tested Items	Result				MDL	Limit
	1	2	3	4		
Aluminium(Al)	N.D.	N.D.	N.D.	N.D.	50	28130 <sup>^</sup>
Antimony(Sb)	N.D.	N.D.	N.D.	N.D.	1.0	560
Arsenic(As)	N.D.	N.D.	N.D.	N.D.	0.5	47
Barium(Ba)	N.D.	N.D.	N.D.	N.D.	50	18750
Boron(B)	N.D.	N.D.	N.D.	N.D.	50	15000
Cadmium (Cd)	N.D.	N.D.	N.D.	N.D.	0.3	17
Chromium (III) (Cr(III))	N.D.	N.D.	N.D.	N.D.	5	460
Chromium (VI) (Cr(VI))	N.D.	N.D.	N.D.	N.D.	0.005	0.053
Cobalt(Co)	N.D.	N.D.	N.D.	N.D.	0.5	130
Copper(Cu)	N.D.	N.D.	N.D.	N.D.	50	7700
Lead(Pb)	N.D.	N.D.	N.D.	N.D.	0.5	23
Manganese(Mn)	N.D.	N.D.	N.D.	N.D.	50	15000
Mercury(Hg)	N.D.	N.D.	N.D.	N.D.	0.5	94
Nickel(Ni)	N.D.	N.D.	N.D.	N.D.	10	930
Selenium (Se)	N.D.	N.D.	N.D.	N.D.	0.08	460
Strontium(Sr)	N.D.	N.D.	N.D.	N.D.	5.0	56000
Tin(Sn)	N.D.	N.D.	N.D.	N.D.	50	180000
Organic tin	N.D.	N.D.	N.D.	N.D.	0.5	12
Zinc(Zn)	N.D.	N.D.	N.D.	N.D.	0.08	46000
Conclusion	PASS	PASS	PASS	PASS	/	/

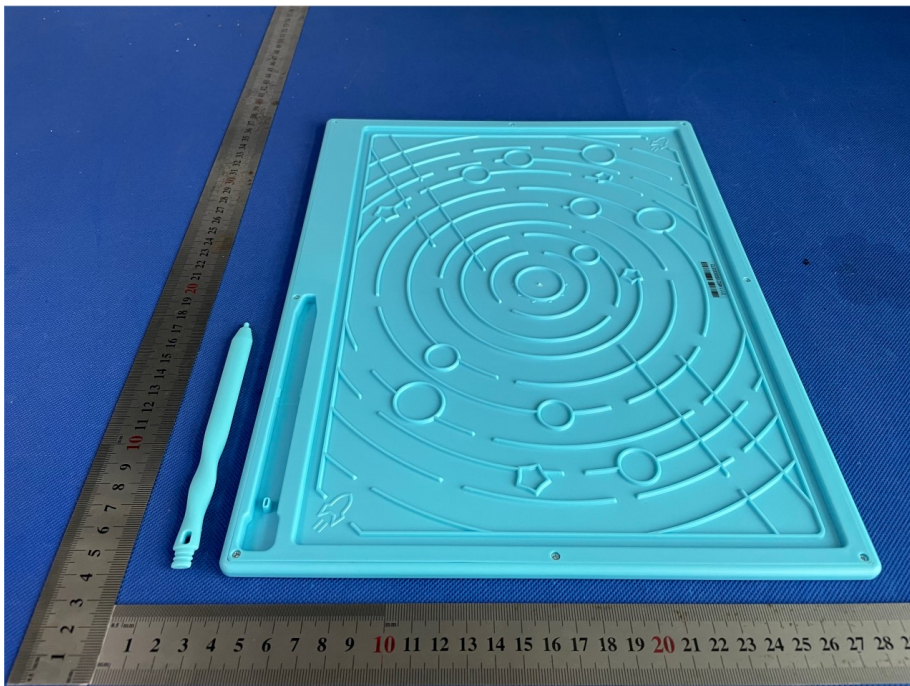
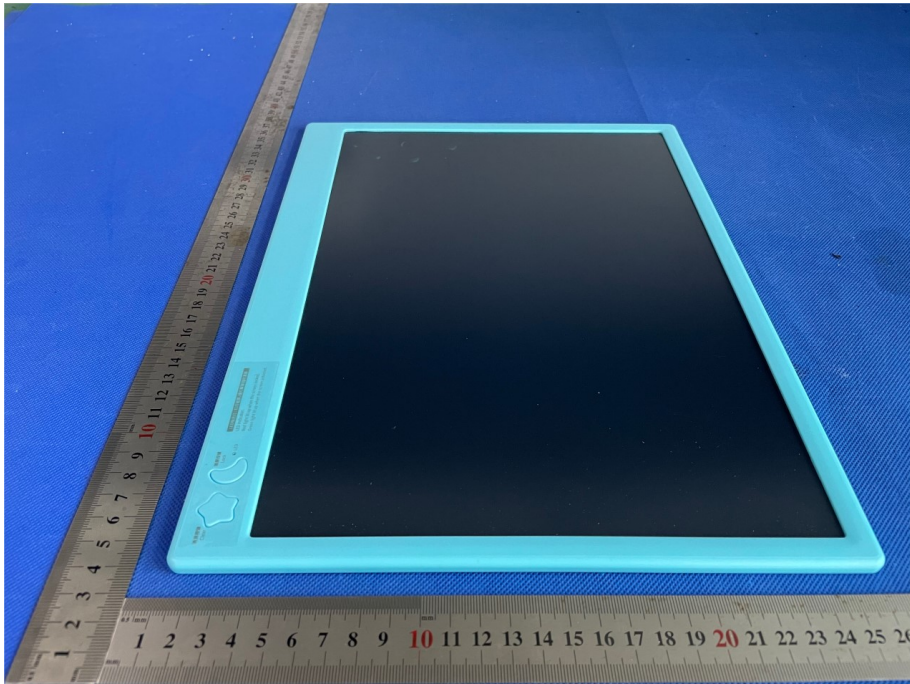
## Remark:

- (1) N.D.= Not Detected (lower than MDL)
- (2) mg/kg=milligram per kilogram
- (3) As per applicant' s request, test was conducted only on components listed in this report, other components were not tested.
- (4) <sup>^</sup>=This limit comes from Regulation (EU)2019/1922.

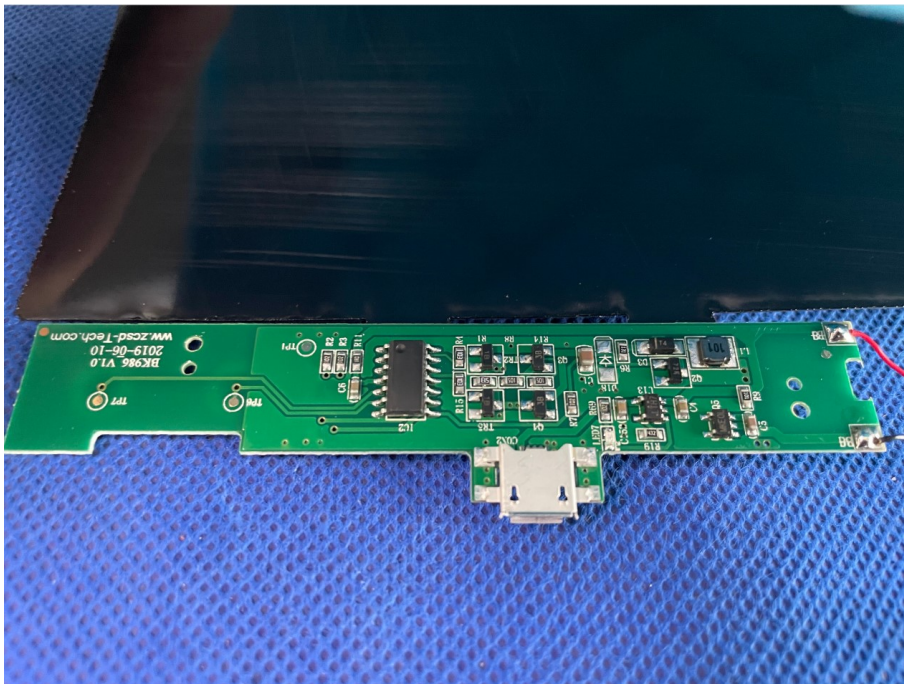
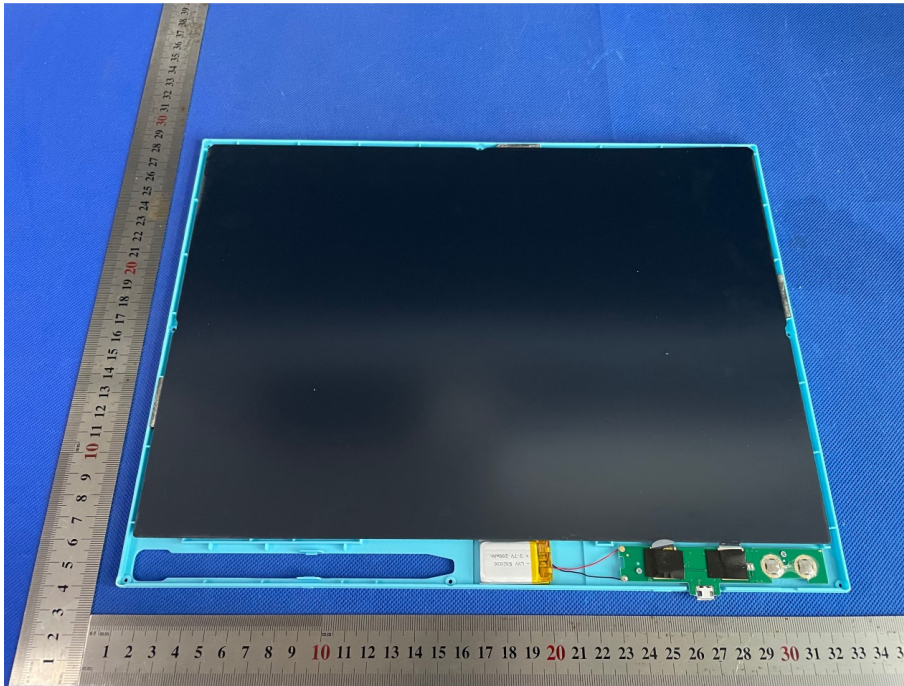


**Sample photo(s):**









\*\*\*\*\*END OF REPORT\*\*\*\*\*