

## Bluetooth keyboard instructions

### Keyboard product parameters:

Bluetooth version: 5.2  
Operating distance: within 10 meters  
working voltage: 3-5V  
Use current: ≤2.5MA  
Standby current: ≤0.3MA  
Sleep current: ≤0.1MA  
Charging current: ≥200MA  
Standby time: ≥30 days  
Charging time: 2-3 hours  
Continuous working time: ( Do not turn on the backlight ) Not less than 25 hours, ( Turn on backlight ) <3 hours  
Key strength: 80±10g  
Key life: 5million clicks  
working temperature: -10±55°

### matters needing attention:

1.If you don't use the keyboard for a long time, we recommend turning off the keyboard to prolong the battery life.  
2.In order to obtain a longer service life of the battery, it is recommended to charge the keyboard only when the power light flashes, and the charging time is 2-3 hours each time.  
3.After the keyboard is connected to the device, there is no need to manually connect again in the future. Just turn on the keyboard, press any key and wait for about 3 seconds. The keyboard will be connected intelligently  
4.After reading the manual, if you don't understand anything, you can contact online customer service. Our specialty can solve any keyboard problems and avoid after-sales problems  
5.If there are typing / touch exceptions, it may be that you have switched to another system. At this time, the switch will be suitable for your own tablet system, such as iPad, press fn+q to switch back to Apple system.  
**Energy saving sleep mode:**  
When the keyboard is not operated for about 15 minutes, it will enter the sleep power saving mode. When it needs to be used, just press any key and wait for about 3 seconds, and the keyboard will be connected intelligently

### clean:

Wet the keyboard with water, alcohol or alcohol like disinfectant, and gently wipe the keyboard with a soft cloth  
**Bluetooth keyboard connection steps:**  
**Connection method of 10.2-11 inch Bluetooth keyboard: (keyboard switch is on the right)**  
1. Turn the power switch on the keyboard to the other side, and the status indicator will light up

for about 3 seconds, and then turn off to enter the pairing state.  
2. Long press the F12 key, which is the penultimate key on the first line of the keyboard.  
3. The tablet computer scans: Wireless Keyboard , click Connect, it shows that it has been successfully connected, and the keyboard indicator light goes out.

### Connection method of 12.9 inch Bluetooth keyboard: (keyboard switch on the right)

1. Turn the power switch on the keyboard to the other side, and the status indicator will light up for about 3 seconds, and then turn off to enter the pairing state.  
2. Press and hold fn+c at the same time  
3. The tablet computer scans: Wireless Keyboard , click Connect, it shows that it has been successfully connected, and the keyboard indicator light goes out

### Keyboard switching system / equipment method:

1. Switch system shortcut keys [Apple system fn+q] [Android system fn+w] [Microsoft system fn+e]  
2. Switch equipment [fn+a, equipment 1] [fn+s, equipment 2] [fn+d, equipment 3]

**Switching devices means that the keyboard can connect 1-3 devices and memorize the Bluetooth of devices, but in the end, the keyboard can only operate one device**  
**Note: (the keyboard is apple system by default, and other systems need to be manually switched)**

### Bluetooth keyboard FAQ:

1. Invalid case switching solution:  
Setting ----- general ----- keyboard ----- physical keyboard ----- use capital lock key to switch language (switch off)  
2. Set cursor moving speed + cursor size + cursor color:  
Cursor moving speed: setting ----- general ----- touch pad and mouse ----- tracking speed  
Cursor size + cursor color: open Settings ----- auxiliary functions ----- pointer control  
3. How to close the screen virtual keyboard:  
Settings - General - auxiliary functions - touch - auxiliary touch - display screen keyboard (switch off)  
Or press the third key on the first line of the keyboard, and press it once to turn on or off the virtual keyboard  
4. Input method switching? How to turn off and turn on the touch function:  
Input method switching: Ctrl + spacebar. Open / close touch key: the second key next to the space bar  
5. What is the function of option button:  
Option key + other keys will get special symbols  
6. Backlight on method / method of adjusting backlight brightness / color:  
The fourth key in the first row can be pressed once to turn on the backlight. Press twice to turn on the second brightness, and press three times to turn on the second brightness  
Gear 3 backlight gear, press four times to turn off the backlight.  
Press the 5th key in the first row to adjust the gradient color

### 7. Voice recognition settings:

Press ctrl+ speech recognition twice, and you can only recognize Mandarin.  
To turn off speech recognition, just press any key to cancel the change function.  
8. The function of the key on the left of the space bar (earth icon):  
Pressing and holding this button can also switch input methods and emoticons  
9. The keyboard suddenly appears typing / touch abnormal solution:  
If there are typing / touch exceptions, it may be that you have switched to another system. At this time, the switch will be suitable for your own tablet system, such as iPad, press fn+q to switch back to Apple system.

### IOS 13 system touch pad gesture

## Touch control board Operating instructions

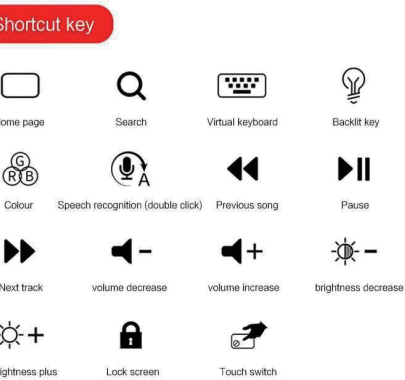
This is IOS\_ 13.4 and above system operation gestures  
(Both the left and right lower parts of the touch panel Set key design)



### Keyboard shortcut function description

## Shortcut / key combination instructions

This is IOS\_ 13.4 and above system operation gestures



### Combination key

[1] Cmd+A=Select all [2] Cmd+V=Paste  
[3] Cmd+Z=Undo [4] Cmd+Shift+3=Screenshot  
[5] Cmd+X=Cut [6] Ctrl+Space=input method switching  
[7] Cmd+C=Copy [8] Double click Ctrl = Speech recognition

## 蓝牙键盘说明书

### 键盘产品参数:

蓝牙版本: 5.2  
操作距离: 10 米内  
工作电压: 3-5V  
工作电流: ≤2.5MA  
待机电流: ≤0.3MA  
睡眠电流: ≤0.1MA  
充电电流: ≥200MA  
待机时间: ≥30 天  
充电时长: 2-3 小时  
连续工作时间: (不开背光) 不小于 25 小时, (开背光) <3 小时  
按键力度: 80±10g  
按键寿命: 500 万次点击  
工作温度: -10±55°

### 注意事项:

1.如果长期不使用键盘,我们建议关闭键盘,以延长电池的寿命。  
2.为了获得更长的电池的使用寿命,建议电源灯闪烁时才给键盘充电,每次充电时间 2-3 小时。  
3.键盘连接过该设备后,以后无需再次手动连接,只需开启键盘,任意按任意按键并等待 3 秒左右键盘会智能回连  
4.如果出现打字/触控异常,可能是切换到了别的系统去了,这时切换会合适自己平板系统即可,如:ipad 的,按 FN+Q 切换回苹果系统。  
**节能休眠模式:**  
当键盘 15 分钟左右无操作会进入休眠省电模式,需要使用时,只需任意按任意按键并等待 3 秒左右键盘会智能回连

### 清洁:

用清水,酒精或类似酒精的消毒剂打湿软布轻擦键盘

### 蓝牙键盘连接操作步骤:

**10.2-11 英寸蓝牙键盘的连接方法:** (键盘开关在右侧)  
1. 将键盘上的电源开关拨动到另一边,状态指示灯将亮起约 3 秒,然后熄灭进入配对状态。

2. 长按 F12 按键,这个按键都在键盘第一行倒数第二个。  
3. 平板电脑扫描到: Wireless Keyboard , 点击连接,显示已成功连接,键盘指示灯熄灭。

### 12.9 英寸蓝牙键盘的连接方法:

1. 将键盘上的电源开关拨动到另一边,状态指示灯将亮起约 3 秒,然后熄灭进入配对状态。  
2. 同时按住 FN+C  
3. 平板电脑扫描到: Wireless Keyboard , 点击连接,显示已成功连接,键盘指示灯熄灭

### 键盘切换系统/设备方法:

1.切换系统快捷键【苹果系统 FN+Q】【安卓系统 FN+W】【微软系统 FN+E】  
2.切换设备【FN+A,设备 1】【FN+S,设备 2】【FN+D,设备 3】  
**切换设备的意思:**指该键盘可连接 1-3 个设备,可记忆设备的蓝牙,但最终该键盘只能操作一个设备  
**注意:** (键盘默认为苹果系统,其他系统需要手动切换)

### 蓝牙键盘常见问题解答:

1. 大小写切换无效解决方法:  
设置-----通用-----键盘-----实体键盘-----使用大写锁定键切换语言 (开关关闭)  
2. 设置光标移动速度+光标大小+光标颜色:  
光标移动速度: 设置-----通用-----触控板与鼠标-----跟踪速度  
光标大小+光标颜色: 打开设置-----辅助功能-----指针控制  
3. 如何关闭屏幕虚拟键盘:  
设置-----通用-----辅助功能-----触控-----辅助触控-----显示屏幕键盘 (开关关闭)  
或者在键盘第一行按键第三个按键,按一下即可开启或者关闭虚拟键盘  
4. 输入法切换: 怎么关闭开启触控功能:  
输入法切换: Ctrl+空格键。开启关闭触控按键: 在空格键旁边第 2 个按键  
5. Option 按键有什么作用:  
Option 按键+其他按键会得到特殊符号哦  
6. 背光开启方法 / 调节背光亮度/颜色的方法:  
第一行按键的第 4 个按键,按一下即可开启背光,按两下即是第 2 档亮度,按三下是第 3 档背光档,按四下是关闭背光。  
第一行按键的第 5 个按键,按一下 RGB 的按键进行调渐变的颜色  
7. 语音识别设置:  
按两下 Ctrl=语音识别,只能识别普通话。  
关闭语音识别,只需要按一下任意按键即取消改功能。  
8. 空格键左边 (地球图标) 按键的作用:  
按住该按键也可以切换输入,也是可以切换表情符号  
9. 键盘突然出现打字/触控异常解决方法:

如果出现打字/触控异常,可能是切换到了别的系统去了,这时切换会合适自己平板系统即可,如:ipad 的,按 FN+Q 切换回苹果系统。

### IOS 13 系统触控板手势

## 触控板 操作说明

此为IOS\_13.4及以上系统操作手势  
(触控板左右下面均设置按键设计)



### 键盘快捷键功能说明

## 快捷/组合键 使用说明

此为IOS\_13.4及以上系统操作手势



### 组合键

[1] Cmd+A=全选 [2] Cmd+V=粘贴  
[3] Cmd+Z=撤销 [4] Cmd+Shift+3=截屏  
[5] Cmd+X=剪切 [6] Ctrl+空格=输入法切换  
[7] Cmd+C=复制 [8] 双击Ctrl=语音识别