


TEST REPORT

Applicant	: Shenzhen Pincheng Lianchuang Technology Co., Ltd
Address	: No.41WuheAvenue (South), Nankeng Community, Bantian Street, Longgang District, Shenzhen, and 218, 2nd Floor, Building A2, Hom Industrial Zone
Manufacturer	: Shenzhen Pincheng Lianchuang Technology Co., Ltd
Address	: No.41WuheAvenue (South), Nankeng Community, Bantian Street, Longgang District, Shenzhen, and 218, 2nd Floor, Building A2, Hom Industrial Zone
Product Name	: Portable DIY mobile power battery case
Trade Mark	: /
Tested Model	: M09B
Series Model	: M08, M06, H08, H02
Date of Sample Received	: December 26,2023
Testing Periods	: December 26,2023 to December 27,2023
Testing Method	: Please refer to next page(s).
Testing Result	: Please refer to next page(s).

Result Summary:

Test Requested	Conclusion
European Directive 2011/65/EU and amendment (EU) 2015/863 on the restriction of the use of certain hazardous substances in electrical and electronic equipment.	PASS

Tested By: RyanLiang	Check By: <i>Tan Wang</i>	 <p>Shenzhen BangCe Testing Technology Co., Ltd.</p> <p>Date of issue: December 27, 2023</p>
Approve By: <i>Wang Bob</i>		
Remarks:	/	

TEST REPORT

Testing Method:

A. Screening test by XRF spectroscopy

XRF screening limits for regulated elements according to IEC 62321-3-1:2013

Element	Screening limit / mg/kg			
	Unit	Polymers	metals	Composite material
Pb	mg/kg	$BL \leq (700-3\sigma) < X < (1300+3\sigma) \leq OL$	$BL \leq (700-3\sigma) < X < (1300+3\sigma) \leq OL$	$BL \leq (500-3\sigma) < X < (1500+3\sigma) \leq OL$
Cd	mg/kg	$BL \leq (70-3\sigma) < X < (130+3\sigma) \leq OL$	$BL \leq (70-3\sigma) < X < (70+3\sigma) \leq OL$	$LOD < X < (150+3\sigma) \leq OL$
Hg	mg/kg	$BL \leq (700-3\sigma) < X < (1300+3\sigma) \leq OL$	$BL \leq (700-3\sigma) < X < (1300+3\sigma) \leq OL$	$BL \leq (500-3\sigma) < X < (1500+3\sigma) \leq OL$
Cr	mg/kg	$BL \leq (700-3\sigma) < X$	$BL \leq (700-3\sigma) < X$	$BL \leq (500-3\sigma) < X$
Br	mg/kg	$BL \leq (300-3\sigma) < X$ (non-metal only)	--	$BL \leq (250-3\sigma) < X$

B. Chemical Test

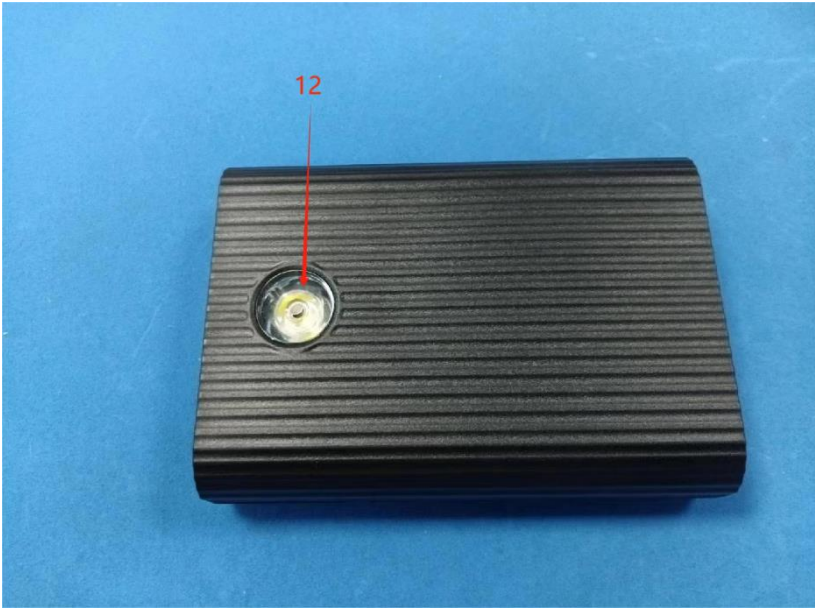

Test Item(s)	Testing Method	Analysis Equipment(s)	MDL	Limit
Lead (Pb)	IEC 62321-5:2013	ICP-OES	10mg/kg	1000mg/kg
Cadmium (Cd)	IEC 62321-5:2013	ICP-OES	10mg/kg	100mg/kg
Mercury (Hg)	IEC 62321-4:2013+AMD1:2017	ICP-OES	10mg/kg	1000mg/kg
Hexavalent Chromium Cr (VI)	IEC 62321-7-1:2015 & IEC 62321-7-2:2017	UV-VIS	10mg/kg	1000mg/kg
Polybrominated Biphenyls (PBBs)	IEC 62321-6:2015	GC-MS	10mg/kg	1000mg/kg
Polybrominated Diphenyl Ethers (PBDEs)	IEC 62321-6:2015	GC-MS	10mg/kg	1000mg/kg
Dibutyl Phthalate	IEC 62321-8:2017	GC-MS	30mg/kg	1000mg/kg
Benzylbutyl Phthalate	IEC 62321-8:2017	GC-MS	30mg/kg	1000mg/kg
Bis-(2-ethylhexyl) Phthalate	IEC 62321-8:2017	GC-MS	30mg/kg	1000mg/kg
Diisobutyl phthalate	IEC 62321-8:2017	GC-MS	30mg/kg	1000mg/kg

TEST REPORT

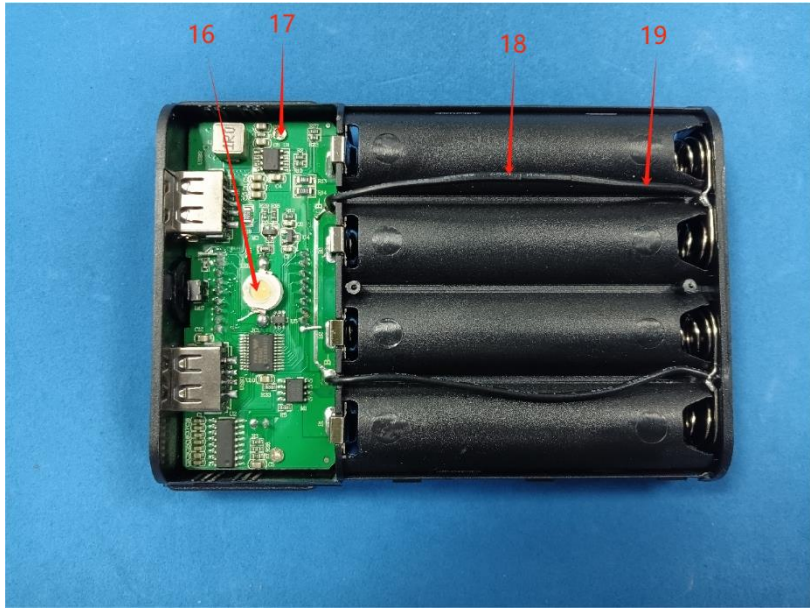
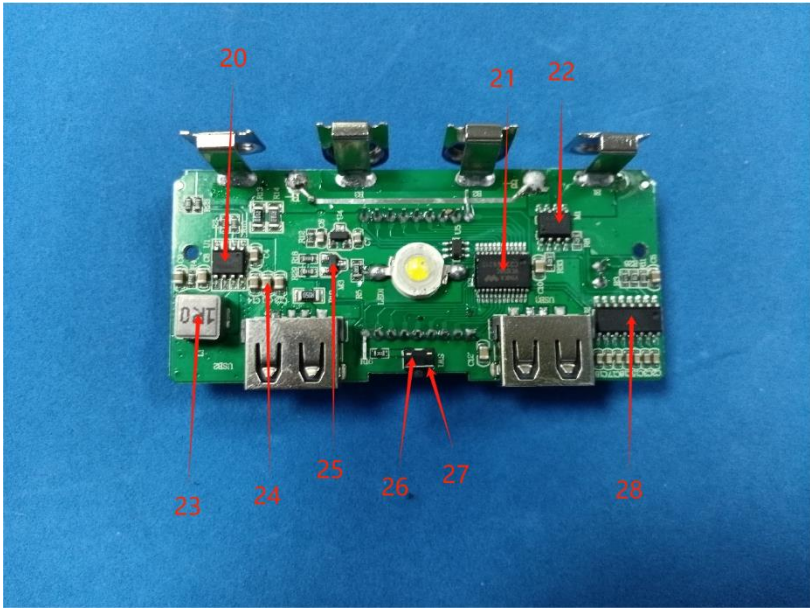
Tested material list:

No.	Description	The photo of the sample
1	Black plastic	
2	White printing font	
3	Silver metal	
4	Black plastic	
5	White plastic	
6	Black plastic	
7	Black plastic	
8	White plastic	
9	Transparent plastic	
10	Black plastic	
11	Black printing font	

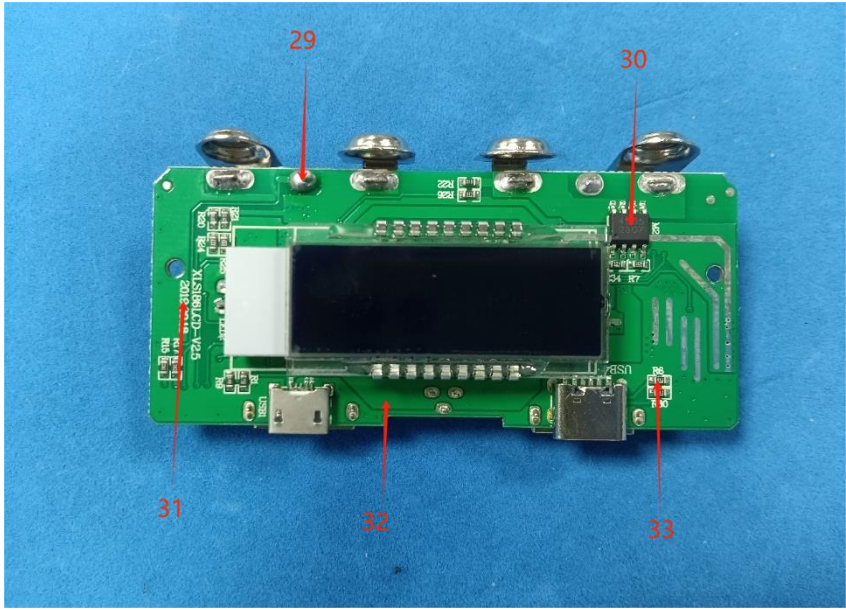
TEST REPORT

12	Transparent plastic	
13	Silver metal	
14	Black metal screw	
15	Silver metal	

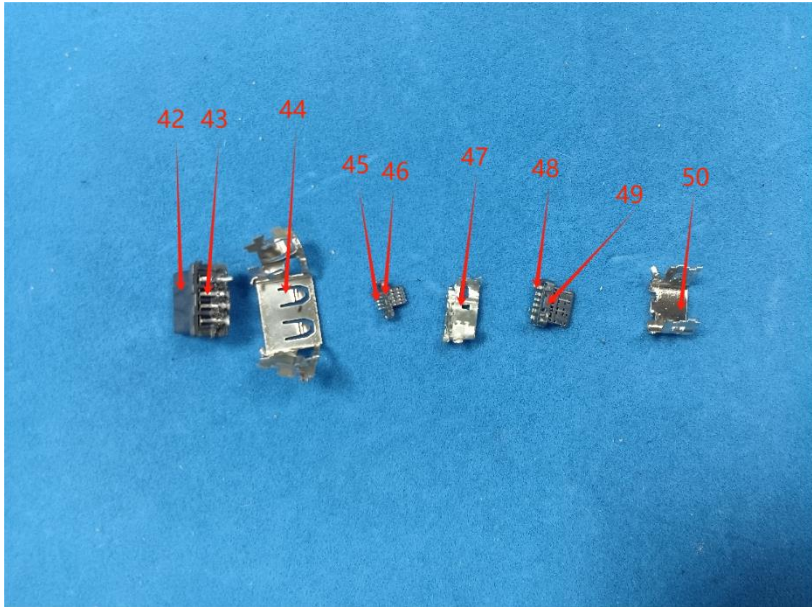
TEST REPORT

16	LED	
17	White metal screw	
18	White printing font	
19	Black wire jacket	
20	IC	
21	IC	
22	IC	
23	Chip inductance	
24	Chip capacitance	
25	Chip triode	
26	Black plastic	
27	Silver metal	
28	IC	

TEST REPORT

29	Soldering tin	
30	IC	
31	White printing font	
32	Green PCB	
33	Chip resistance	
34	Liquid crystal material	
35	Glass	
36	Black foam	
37	Black tape	
38	Transparent plastic	
39	Silver metal	
40	Transparent glue	
41	Silver foam	

TEST REPORT

42	Black plastic	
43	Silver metal	
44	Silver metal	
45	Silver metal	
46	Black plastic	
47	Silver metal	
48	Silver metal	
49	Black plastic	
50	Silver metal	

Note: test samples were specified by applicant.

TEST REPORT

Tested Results:

No.	XRF Screening Result					Chemical confirm Result(mg/kg)	Remark	Conclusion
	Pb	Cd	Hg	Cr	Br			
1	BL	BL	BL	BL	BL	--	--	Pass
2	BL	BL	BL	BL	BL	--	--	Pass
3	BL	BL	BL	BL	N.A	--	--	Pass
4	BL	BL	BL	BL	BL	--	--	Pass
5	BL	BL	BL	BL	BL	--	--	Pass
6	BL	BL	BL	BL	BL	--	--	Pass
7	BL	BL	BL	BL	BL	--	--	Pass
8	BL	BL	BL	BL	BL	--	--	Pass
9	BL	BL	BL	BL	BL	--	--	Pass
10	BL	BL	BL	BL	BL	--	--	Pass
11	BL	BL	BL	BL	BL	--	--	Pass
12	BL	BL	BL	BL	BL	--	--	Pass
13	BL	BL	BL	BL	N.A	--	--	Pass
14	BL	BL	BL	BL	N.A	--	--	Pass
15	BL	BL	BL	BL	N.A	--	--	Pass
16	BL	BL	BL	BL	BL	--	--	Pass
17	BL	BL	BL	BL	N.A	--	--	Pass
18	BL	BL	BL	BL	BL	--	--	Pass
19	BL	BL	BL	BL	BL	--	--	Pass
20	BL	BL	BL	BL	BL	--	--	Pass
21	BL	BL	BL	BL	BL	--	--	Pass
22	BL	BL	BL	BL	BL	--	--	Pass
23	BL	BL	BL	BL	BL	--	--	Pass
24	BL	BL	BL	BL	BL	--	--	Pass
25	BL	BL	BL	BL	BL	--	--	Pass
26	BL	BL	BL	BL	BL	--	--	Pass

TEST REPORT

27	BL	BL	BL	BL	BL	--	--	Pass
28	BL	BL	BL	BL	BL	--	--	Pass
29	BL	BL	BL	BL	N.A	--	--	Pass
30	BL	BL	BL	BL	BL	--	--	Pass
31	BL	BL	BL	BL	BL	--	--	Pass
32	BL	BL	BL	BL	X	PBB&PBDE:N.D	--	Pass
33	BL	BL	BL	BL	BL	--	--	Pass
34	BL	BL	BL	BL	BL	--	--	Pass
35	BL	BL	BL	BL	BL	--	--	Pass
36	BL	BL	BL	BL	BL	--	--	Pass
37	BL	BL	BL	BL	BL	--	--	Pass
38	BL	BL	BL	BL	BL	--	--	Pass
39	BL	BL	BL	BL	N.A	--	--	Pass
40	BL	BL	BL	BL	BL	--	--	Pass
41	BL	BL	BL	BL	BL	--	--	Pass
42	BL	BL	BL	BL	BL	--	--	Pass
43	BL	BL	BL	BL	N.A	--	--	Pass
44	BL	BL	BL	BL	N.A	--	--	Pass
45	BL	BL	BL	BL	N.A	--	--	Pass
46	BL	BL	BL	BL	BL	--	--	Pass
47	BL	BL	BL	BL	N.A	--	--	Pass
48	BL	BL	BL	BL	N.A	--	--	Pass
49	BL	BL	BL	BL	BL	--	--	Pass
50	BL	BL	BL	BL	N.A	--	--	Pass

Note: test samples were specified by applicant.

TEST REPORT

Test Item(s)	Dibutyl Phthalate(DBP) (mg/kg)	Benzylbutyl Phthalate(BBP) (mg/kg)	Bis-(2-ethylhexyl) Phthalate(DEHP) (mg/kg)	Diisobutyl phthalate(DIBP) (mg/kg)	Conclusion
CAS No.	84-74-2	85-68-7	117-81-7	84-69-5	
Limit	1000	1000	1000	1000	
No.	Result (mg/kg)				
1+4+5	N.D	N.D	N.D	N.D	Pass
2+11	N.D	N.D	N.D	N.D	Pass
3+13+15	N.D	N.D	N.D	N.D	Pass
6+7+8	N.D	N.D	N.D	N.D	Pass
9+12	N.D	N.D	N.D	N.D	Pass
10+26+38	N.D	N.D	N.D	N.D	Pass
14+17	N.D	N.D	86	N.D	Pass
18+31	N.D	N.D	N.D	N.D	Pass
20+21+22	N.D	N.D	N.D	N.D	Pass
23+24+25	N.D	N.D	N.D	N.D	Pass
27+29+39	N.D	N.D	N.D	N.D	Pass
28+30+33	N.D	N.D	N.D	N.D	Pass
32+37+40	123	N.D	N.D	N.D	Pass
34+35	N.D	N.D	N.D	N.D	Pass
36+41	N.D	N.D	N.D	N.D	Pass
42+46+49	N.D	N.D	N.D	N.D	Pass
43+44+45	N.D	N.D	N.D	N.D	Pass
47+48+50	N.D	N.D	N.D	54	Pass

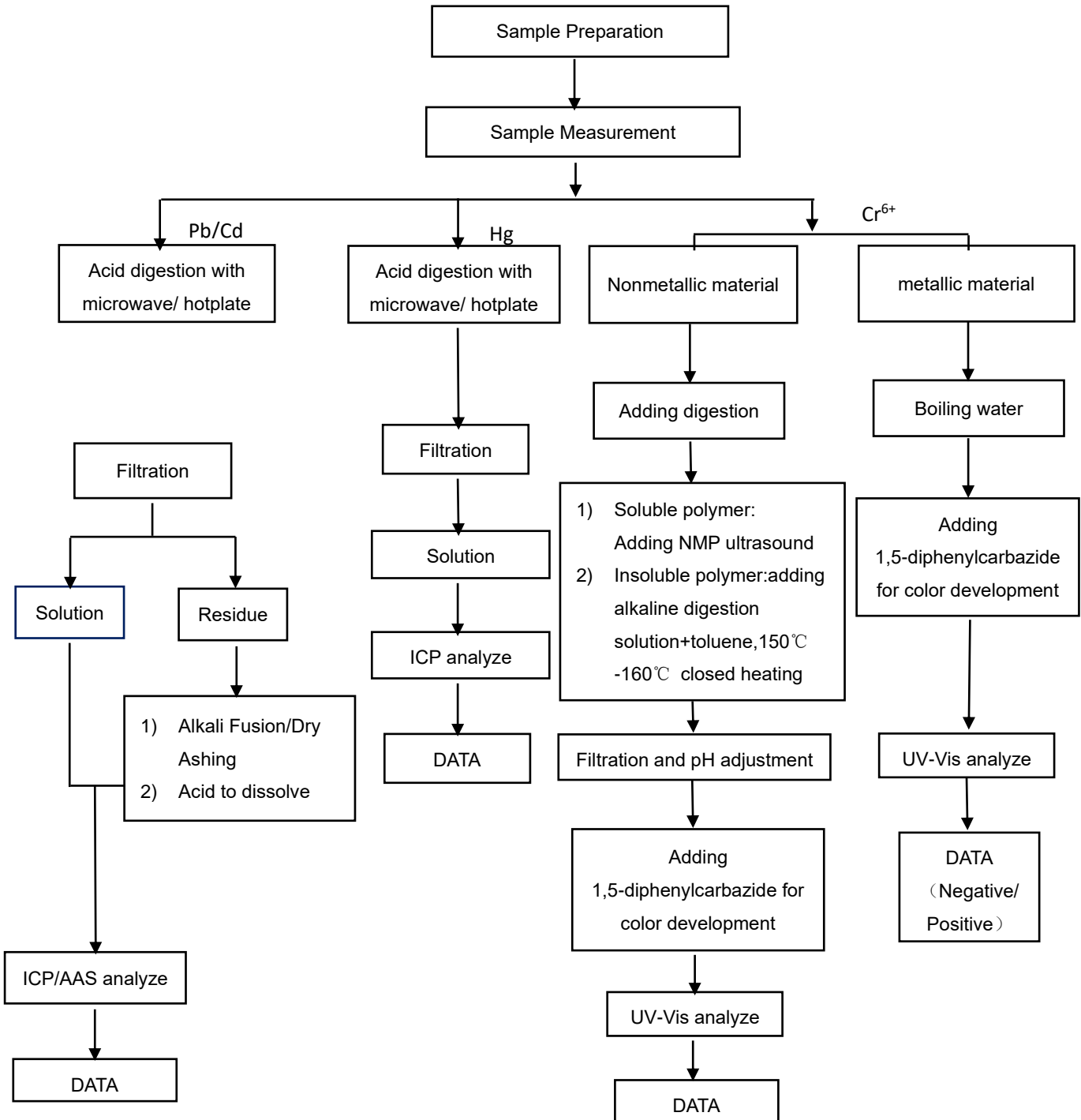
TEST REPORT

1. BL = below the limit; MDL =Method Detection Limit
2. OL = over the limit;LOD=Limit of Quantization,The LOQ of Hexavalent chromium is $0.1 \mu\text{g}/\text{cm}^2$
3. X = inconclusive, chemical confirm test is needed
4. N.A = not applicable
5. mg/kg = milligram per kilogram = ppm
6. N.D = not detected
7. Negative =The Cr^{6+} concentration is below the limit of quantification. The coating is considered a non- Cr^{6+} based coating.
8. Positive =The Cr^{6+} concentration is above the limit of quantification and the statistical margin Of error, the sample coating is considered to contain Cr^{6+} .
- 9.Positive = The limit for composite test should be divided by the mixed number.
- 10.When perform screening tests, it is result on total Br while test item on restricted substances is PBBs/PBDEs, it is the result on total Cr while test item on restricted substances is Cr^{6+} .
- 11.Pb, Cd, Hg, Cr and Br result are obtained by EDXRF for primary screening, and further chemical testing by ICP-OES(for Cd, Pb, Hg),UV-VIS(for Cr^{6+}) and GC-MS(for PBBs, PBDEs)is needed to be performed, if the concentration falls into the inconclusive area according to IEC 62321-3-1:2013.
- 12.For the XRF screening test for RoHS element, the reading may be different to the actual content in the sample be of non-uniformity composition.

TEST REPORT

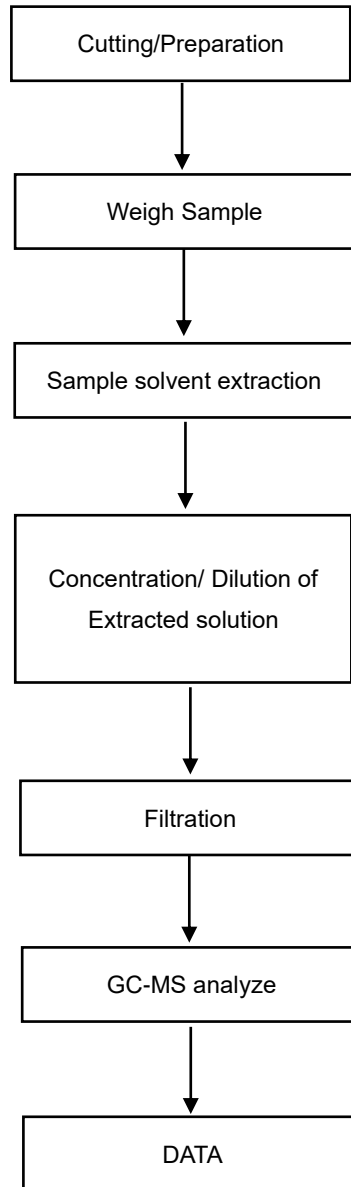
Appendix

Pb/Cd/Hg/Cr⁶⁺ Testing Flow Chart



TEST REPORT

PBBs/PBDEs Testing Flow Chart



TEST REPORT

Photo Documentation



Overall photo (Appearance front)



Overall photo (Appearance back)

TEST REPORT



Sample Appearance(Model: M09B)



Sample Appearance(Model: M08)

TEST REPORT



Sample Appearance(Model: M06)



Sample Appearance(Model: H08)

TEST REPORT



Sample Appearance(Model: H02)
authenticate the photo on original report only