



Zhongshan LCS Compliance Testing Laboratory Ltd.

Add: No. 23F, Building A, Zhongshan Harbor of, iDEAS, No 25 Gangyi Road, Torch Development Zhongshan, Guangdong, China

Tel: (86) 0760-85282956 Fax: (86) 0760-85282906 Internet: [Http://www.LCS-cert.com](http://www.LCS-cert.com)

Report No.: LCS210222003DR

TEST REPORT

Applicant : Shenzhen DOOGEE Hengtong Technology CO., LTD
Address : B, 2/F, Building A4, Silicon Valley Power Digital Industrial Park, No. 22, Dafu Industrial Zone, Guanlan Aobei Community, Guanlan Street, Longhua New District, Shenzhen

Report on the submitted samples said to be:

Sample Name : 3G/4G Smart Phone
Trade Mark : DOOGEE
Style/ Item No. : X96Pro, X96
Manufacturer : Shenzhen DOOGEE Hengtong Technology CO., LTD
Address : B, 2/F, Building A4, Silicon Valley Power Digital Industrial Park, No. 22, Dafu Industrial Zone, Guanlan Aobei Community, Guanlan Street, Longhua New District, Shenzhen
Sample Receiving Date : March 02, 2021
Testing Period : March 02, 2021 ~ March 10, 2021
Results : Please refer to next page(s).

Conclusion : Based on the performed tests on submitted sample(s), the results of Lead, Mercury, Cadmium, Hexavalent chromium, Polybrominated biphenyls(PBBS), Polybrominated diphenyl ethers(PBDEs) and phthalates such as bis(2-ethylhexyl) phthalate(DEHP), Butyl benzyl phthalate(BBP), Dibutyl phthalate(DBP), and diisobutyl phthalate(DIBP) comply with the limits as set by ROHS Directive (EU)2015/863 amending Annex II to Directive 2011/65/EU.

Signed for and on behalf of LCS

Written By: Tenny.Wang
Tenny.Wang



The Test Report is issued by the Company subject to its General Conditions of Service printed overleaf. Attention is drawn to the limitations of liability, indemnification and jurisdictional issues defined therein. The results shown in this test report refer only to the sample(s) tested unless otherwise stated. This Test Report cannot be reproduced, except in full, without prior written permission of the Company.



Zhongshan LCS Compliance Testing Laboratory Ltd.

Add: No. 23F, Building A, Zhongshan Harbor of, iDEAS, No 25 Gangyi Road, Torch Development
Zhongshan, Guangdong, China

Tel: (86) 0760-85282956 Fax: (86) 0760-85282906 Internet: [Http://www.LCS-cert.com](http://www.LCS-cert.com)

Report No.: LCS210222003DR

1. LISTS

No.	Part Name	Report No.
1	Black plastic shell	LCS201212030AR
2	Silver metal shell	LCS201212060AR
3	Silver metal screw	LCS201212061AR
4	Black metal screw	LCS201212062AR
5	Brown line skin	LCS201212040AR
6	Red line skin	LCS201212041AR
7	White line skin	LCS201212042AR
8	Black line skin	LCS201212043AR
9	Blue line skin	LCS201212044AR
10	Yellow skin line	LCS201212045AR
11	Gray line skin	LCS201212046AR
12	Silver metal wire	LCS201212069AR
13	Silvery metal(Display)	LCS201212075AR
14	White plastic(Display)	LCS201212052AR
15	White plastic sheet(Display)	LCS201212051AR
16	Transparent plastic(Display)	LCS201212053AR
17	LED(Display)	LCS201212055AR
18	Yellow base band(Display)	LCS201212054AR
19	Black glass(Display)	LCS201212085AR
20	Black plastic (Speaker)	LCS201212048AR
21	Copper line(Speaker)	LCS201212073AR
22	Silvery metal(Speaker)	LCS201212072AR
23	Transparent plastic(Speaker)	LCS201212049AR
24	PCB(Speaker)	LCS201212031AR
25	Solder(Speaker)	LCS201212074AR



Zhongshan LCS Compliance Testing Laboratory Ltd.

Add: No. 23F, Building A, Zhongshan Harbor of, iDEAS, No 25 Gangyi Road, Torch Development
Zhongshan, Guangdong, China

Tel: (86) 0760-85282956 Fax: (86) 0760-85282906 Internet: [Http://www.LCS-cert.com](http://www.LCS-cert.com)

Report No.: LCS210222003DR

26	Transparent plastic(Camera)	LCS201212058AR
27	Glass(Camera)	LCS201212070AR
28	Silvery metal(Camera)	LCS201212071AR
29	Silver metal shell(Motor)	LCS201212076AR
30	Silver metal rod(Motor)	LCS201212077AR
31	White plastic(Motor)	LCS201212056AR
32	Copper wire coil(Motor)	LCS201212078AR
33	Gray metal(Motor)	LCS201212079AR
34	Gold metal(Motor)	LCS201212080AR
35	Magnet (Motor)	LCS201212029AR
36	Silvery metal(USB)	LCS201212071AR
37	Black plastic(USB)	LCS201212058AR
38	Golden metal(USB)	LCS201212070AR
39	Black plastic(SD card)	LCS201212059AR
40	Silvery metal(SD card)	LCS201212081AR
41	Silvery metal needle(SD card)	LCS201212082AR
42	Black plastic(HDMI)	LCS201212036AR
43	Silvery metal(HDMI)	LCS201212083AR
44	Silvery metal needle(HDMI)	LCS201212084AR
45	Black plastic case(Capacitance)	LCS201212037AR
46	Silvery metal case(Capacitance)	LCS201212067AR
47	Black plastic(Capacitance)	LCS201212039AR
48	Electriolsis paper(Capacitance)	LCS201212038AR
49	Silvery metal needle(Capacitance)	LCS201212068AR
50	Yellow tape (Transformer)	LCS201212032AR
51	Black ceramics (Transformer)	LCS201212022AR
52	Black plastic (Transformer)	LCS201212033AR
53	Copper coil (Transformer)	LCS201212064AR
54	Silver metal needle (Transformer)	LCS201212065AR



Zhongshan LCS Compliance Testing Laboratory Ltd.

Add: No. 23F, Building A, Zhongshan Harbor of, iDEAS, No 25 Gangyi Road, Torch Development Zhongshan, Guangdong, China

Tel: (86) 0760-85282956 Fax: (86) 0760-85282906 Internet: [Http://www.LCS-cert.com](http://www.LCS-cert.com)

Report No.: LCS210222003DR

55	White line skin (Transformer)	LCS201212034AR
56	Yellow plastic tape(Inductance)	LCS201212035AR
57	Ceramic(Inductance)	LCS201212023AR
58	Black plastic(Inductance)	LCS201212047AR
59	Copper line(Inductance)	LCS201212066AR
60	Silvery metal needle (Inductance)	LCS201212068AR
61	Triode	LCS201212026AR
62	Diode	LCS201212025AR
63	Chips of resistance	LCS201212028AR
64	Chips of capacitance	LCS201212027AR
65	Chromatic ring resistance	LCS201212024AR
66	Black IC	LCS201212123AR
67	PCB	LCS201212050AR
68	Solder on PCB	LCS201212063AR

2. TEST DATA SUMMARY

Test items	Lead (Pb)	Cadmium (Cd)	Mercury (Hg)	Hexavalent Chromium Cr(VI)	PBBs	PBDEs	BBP	DBP	DEHP	DIBP
Unit	ppm	ppm	ppm	ppm	ppm	ppm	ppm	ppm	ppm	ppm
1	N.D.	N.D.	N.D.	N.D.	N.D.	N.D.	N.D.	N.D.	N.D.	N.D.
2	N.D.	N.D.	N.D.	N.D.	N.D.	N.D.	N.D.	N.D.	N.D.	N.D.
3	N.D.	N.D.	N.D.	N.D.	N.D.	N.D.	N.D.	N.D.	N.D.	N.D.
4	N.D.	N.D.	N.D.	N.D.	N.D.	N.D.	N.D.	N.D.	N.D.	N.D.
5	N.D.	N.D.	N.D.	N.D.	N.D.	N.D.	N.D.	N.D.	N.D.	N.D.
6	N.D.	N.D.	N.D.	N.D.	N.D.	N.D.	N.D.	N.D.	N.D.	N.D.
7	N.D.	N.D.	N.D.	N.D.	N.D.	N.D.	N.D.	N.D.	N.D.	N.D.
8	N.D.	N.D.	N.D.	N.D.	N.D.	N.D.	N.D.	N.D.	N.D.	N.D.
9	N.D.	N.D.	N.D.	N.D.	N.D.	N.D.	N.D.	N.D.	N.D.	N.D.



Zhongshan LCS Compliance Testing Laboratory Ltd.

Add: No. 23F, Building A, Zhongshan Harbor of, iDEAS, No 25 Gangyi Road, Torch Development Zhongshan, Guangdong, China

Tel: (86) 0760-85282956 Fax: (86) 0760-85282906 Internet: [Http://www.LCS-cert.com](http://www.LCS-cert.com)

Report No.: LCS210222003DR

10	N.D.	N.D.	N.D.	N.D.	N.D.	N.D.	N.D.	N.D.	N.D.	N.D.
11	N.D.	N.D.	N.D.	N.D.	N.D.	N.D.	N.D.	N.D.	N.D.	N.D.
12	N.D.	N.D.	N.D.	N.D.	N.D.	N.D.	N.D.	N.D.	N.D.	N.D.
13	N.D.	N.D.	N.D.	N.D.	N.D.	N.D.	N.D.	N.D.	N.D.	N.D.
14	N.D.	N.D.	N.D.	N.D.	N.D.	N.D.	N.D.	N.D.	N.D.	N.D.
15	N.D.	N.D.	N.D.	N.D.	N.D.	N.D.	N.D.	N.D.	N.D.	N.D.
16	N.D.	N.D.	N.D.	N.D.	N.D.	N.D.	N.D.	N.D.	N.D.	N.D.
17	N.D.	N.D.	N.D.	N.D.	N.D.	N.D.	N.D.	N.D.	N.D.	N.D.
18	N.D.	N.D.	N.D.	N.D.	N.D.	N.D.	N.D.	N.D.	N.D.	N.D.
19	N.D.	N.D.	N.D.	N.D.	N.D.	N.D.	N.D.	N.D.	N.D.	N.D.
20	N.D.	N.D.	N.D.	N.D.	N.D.	N.D.	N.D.	N.D.	N.D.	N.D.
21	N.D.	N.D.	N.D.	N.D.	N.D.	N.D.	N.D.	N.D.	N.D.	N.D.
22	N.D.	N.D.	N.D.	N.D.	N.D.	N.D.	N.D.	N.D.	N.D.	N.D.
23	N.D.	N.D.	N.D.	N.D.	N.D.	N.D.	N.D.	N.D.	N.D.	N.D.
24	N.D.	N.D.	N.D.	N.D.	N.D.	N.D.	N.D.	N.D.	N.D.	N.D.
25	N.D.	N.D.	N.D.	N.D.	N.D.	N.D.	N.D.	N.D.	N.D.	N.D.
26	N.D.	N.D.	N.D.	N.D.	N.D.	N.D.	N.D.	N.D.	N.D.	N.D.
27	N.D.	N.D.	N.D.	N.D.	N.D.	N.D.	N.D.	N.D.	N.D.	N.D.
28	N.D.	N.D.	N.D.	N.D.	N.D.	N.D.	N.D.	N.D.	N.D.	N.D.
29	N.D.	N.D.	N.D.	N.D.	N.D.	N.D.	N.D.	N.D.	N.D.	N.D.
30	N.D.	N.D.	N.D.	N.D.	N.D.	N.D.	N.D.	N.D.	N.D.	N.D.
31	N.D.	N.D.	N.D.	N.D.	N.D.	N.D.	N.D.	N.D.	N.D.	N.D.
32	N.D.	N.D.	N.D.	N.D.	N.D.	N.D.	N.D.	N.D.	N.D.	N.D.
33	N.D.	N.D.	N.D.	N.D.	N.D.	N.D.	N.D.	N.D.	N.D.	N.D.
34	N.D.	N.D.	N.D.	N.D.	N.D.	N.D.	N.D.	N.D.	N.D.	N.D.
35	N.D.	N.D.	N.D.	N.D.	N.D.	N.D.	N.D.	N.D.	N.D.	N.D.
36	N.D.	N.D.	N.D.	N.D.	N.D.	N.D.	N.D.	N.D.	N.D.	N.D.
37	N.D.	N.D.	N.D.	N.D.	N.D.	N.D.	N.D.	N.D.	N.D.	N.D.
38	N.D.	N.D.	N.D.	N.D.	N.D.	N.D.	N.D.	N.D.	N.D.	N.D.



Zhongshan LCS Compliance Testing Laboratory Ltd.

Add: No. 23F, Building A, Zhongshan Harbor of, iDEAS, No 25 Gangyi Road, Torch Development
Zhongshan, Guangdong, China

Tel: (86) 0760-85282956 Fax: (86) 0760-85282906 Internet: [Http://www.LCS-cert.com](http://www.LCS-cert.com)

Report No.: LCS210222003DR

39	N.D.	N.D.	N.D.	N.D.	N.D.	N.D.	N.D.	N.D.	N.D.	N.D.
40	N.D.	N.D.	N.D.	N.D.	N.D.	N.D.	N.D.	N.D.	N.D.	N.D.
41	N.D.	N.D.	N.D.	N.D.	N.D.	N.D.	N.D.	N.D.	N.D.	N.D.
42	N.D.	N.D.	N.D.	N.D.	N.D.	N.D.	N.D.	N.D.	N.D.	N.D.
43	N.D.	N.D.	N.D.	N.D.	N.D.	N.D.	N.D.	N.D.	N.D.	N.D.
44	N.D.	N.D.	N.D.	N.D.	N.D.	N.D.	N.D.	N.D.	N.D.	N.D.
45	N.D.	N.D.	N.D.	N.D.	N.D.	N.D.	N.D.	N.D.	N.D.	N.D.
46	N.D.	N.D.	N.D.	N.D.	N.D.	N.D.	N.D.	N.D.	N.D.	N.D.
47	N.D.	N.D.	N.D.	N.D.	N.D.	N.D.	N.D.	N.D.	N.D.	N.D.
48	N.D.	N.D.	N.D.	N.D.	N.D.	N.D.	N.D.	N.D.	N.D.	N.D.
49	N.D.	N.D.	N.D.	N.D.	N.D.	N.D.	N.D.	N.D.	N.D.	N.D.
50	N.D.	N.D.	N.D.	N.D.	N.D.	N.D.	N.D.	N.D.	N.D.	N.D.
51	N.D.	N.D.	N.D.	N.D.	N.D.	N.D.	N.D.	N.D.	N.D.	N.D.
52	N.D.	N.D.	N.D.	N.D.	N.D.	N.D.	N.D.	N.D.	N.D.	N.D.
53	N.D.	N.D.	N.D.	N.D.	N.D.	N.D.	N.D.	N.D.	N.D.	N.D.
54	N.D.	N.D.	N.D.	N.D.	N.D.	N.D.	N.D.	N.D.	N.D.	N.D.
55	N.D.	N.D.	N.D.	N.D.	N.D.	N.D.	N.D.	N.D.	N.D.	N.D.
56	N.D.	N.D.	N.D.	N.D.	N.D.	N.D.	N.D.	N.D.	N.D.	N.D.
57	N.D.	N.D.	N.D.	N.D.	N.D.	N.D.	N.D.	N.D.	N.D.	N.D.
58	N.D.	N.D.	N.D.	N.D.	N.D.	N.D.	N.D.	N.D.	N.D.	N.D.
59	N.D.	N.D.	N.D.	N.D.	N.D.	N.D.	N.D.	N.D.	N.D.	N.D.
60	N.D.	N.D.	N.D.	N.D.	N.D.	N.D.	N.D.	N.D.	N.D.	N.D.
61	N.D.	N.D.	N.D.	N.D.	N.D.	N.D.	N.D.	N.D.	N.D.	N.D.
62	N.D.	N.D.	N.D.	N.D.	N.D.	N.D.	N.D.	N.D.	N.D.	N.D.
63	N.D.	N.D.	N.D.	N.D.	N.D.	N.D.	N.D.	N.D.	N.D.	N.D.
64	N.D.	N.D.	N.D.	N.D.	N.D.	N.D.	N.D.	N.D.	N.D.	N.D.
65	N.D.	N.D.	N.D.	N.D.	N.D.	N.D.	N.D.	N.D.	N.D.	N.D.
66	N.D.	N.D.	N.D.	N.D.	N.D.	N.D.	N.D.	N.D.	N.D.	N.D.
67	N.D.	N.D.	N.D.	N.D.	N.D.	N.D.	N.D.	N.D.	N.D.	N.D.



Zhongshan LCS Compliance Testing Laboratory Ltd.

Add: No. 23F, Building A, Zhongshan Harbor of, iDEAS, No 25 Gangyi Road, Torch Development Zhongshan, Guangdong, China

Tel: (86) 0760-85282956 Fax: (86) 0760-85282906 Internet: [Http://www.LCS-cert.com](http://www.LCS-cert.com)

Report No.: LCS210222003DR

68	N.D.	N.D.	N.D.	N.D.	N.D.	N.D.	N.D.	N.D.	N.D.	N.D.
----	------	------	------	------	------	------	------	------	------	------

Note:

(1) N.D. = Not detected (<MDL)

(2) ppm = mg/kg

(3) N.A. = Not Analyzed

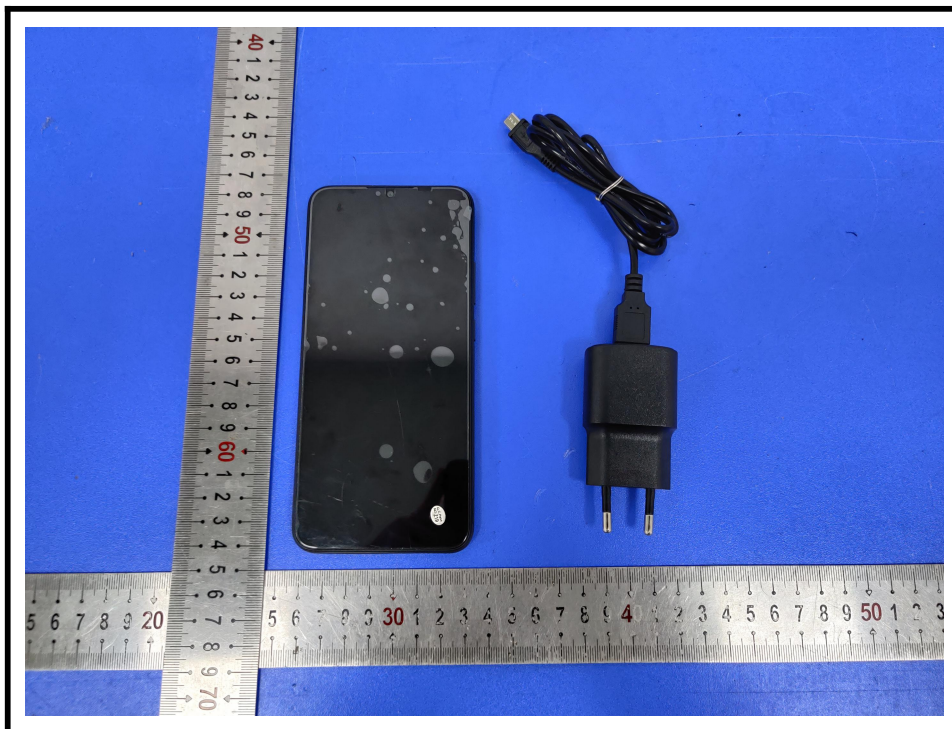
(4) Negative = the concentration of Hexavalent Chromium extracted from 50cm² sample is less than the detection limit.

Remark: Lead in electronic components, which are exempted from (RoHS) the requirements.

Disclaimer:

- The integration report is not equivalent to the test report.
- LCS does not shoulder responsibility for the authenticity of all the test data listed in integration report, which are submitted by the applicants.
- The applicants are responsible for all legal obligation caused by the inaccuracy and invalidity of the original report.
- If this disclaimer contradicts any other terms and conditions of LCS, this disclaimer will prevail.

3. PHOTOGRAPHS OF TEST SAMPLE







Zhongshan LCS Compliance Testing Laboratory Ltd.

Add: No. 23F, Building A, Zhongshan Harbor of, iDEAS, No 25 Gangyi Road, Torch Development
Zhongshan, Guangdong, China

Tel: (86) 0760-85282956

Fax: (86) 0760-85282906

Internet: [Http://www.LCS-cert.com](http://www.LCS-cert.com)

Report No.: *LCS210222003DR*



LCS authenticate the photo on original report only

End of Report