



RoHS TEST REPORT

Product.....: Power assisted electric bicycle

Model.....: HR-G50

Trademark.....: **HAPPYRUN**

Prepared For.....: **Shenzhen Happyrun Intelligent Technology Co., Ltd.**
3F, Building A, Runfa Tech Park, NO.25, Mudun Road, First
Industry Park, Lou Cun, Gongming, Guangming, Shenzhen, China

Prepared By: **Guangdong Zhonghan Testing Technology Co., Ltd.**
Room 104, Building 1, Yibaolai Industrial Park, Qiaotou
Community, Fuhai Street, Bao'an District, Shenzhen, Guangdong,
China
Mail:admin@zht-lab.com
Web: http://www.zht-lab.com
Tel.:0755-27782934



RoHS TEST REPORT

Report Number.....:	ZHT-221010004R
Date of issue.....:	Oct. 14, 2022
Total number of pages.....:	16 pages
Testing Laboratory.....:	Guangdong Zhonghan Testing Technology Co., Ltd.
Address.....:	Room 104, Building 1, Yibaolai Industrial Park, Qiaotou Community, Fuhai Street, Bao'an District, Shenzhen, Guangdong, China
Applicant's name.....:	Shenzhen Happyrun Intelligent Technology Co., Ltd.
Address.....:	3F, Building A, Runfa Tech Park, NO.25, Mudun Road, First Industry Park, Lou Cun, Gongming, Guangming, Shenzhen, China
Test specification:	
Test Requested.....:	Selected test(s) as requested by client
Test Method.....:	Based on the performed tests on submitted sample(s), the results of Lead, Mercury, Cadmium, Hexavalent chromium, Polybrominated biphenyls (PBBs), Polybrominated diphenyl ethers (PBDEs) and Phthalates such as Bis(2-ethylhexyl) phthalate (DEHP) , Butyl benzyl phthalate (BBP), Dibutyl phthalate (DBP) , and Diisobutyl phthalate (DIBP) comply with the limits as set by RoHS Directive 2011/65/EU Annex II amending Annex (EU)2015/863 and amending Annex (EU)2017/2102
Test Result.....:	Please refer to next page(s).

Test item description.....:	Power assisted electric bicycle
Trademark.....:	HAPPYRUN
Manufacturer.....:	Shenzhen Happyrun Intelligent Technology Co., Ltd. 3F, Building A, Runfa Tech Park, NO.25, Mudun Road, First Industry Park, Lou Cun, Gongming, Guangming, Shenzhen, China
Model/Type reference.....:	HR-G50



Name and address of the testing laboratory:

Guangdong Zhonghan Testing Technology Co., Ltd.

Room 104, Building 1, Yibaolai Industrial Park,
Qiaotou Community, Fuhai Street, Bao'an
District, Shenzhen, Guangdong, China

Date of Test..... : Oct. 09, 2022 - Oct. 14, 2022

Tested by (name + signature)..... : Cindy Su

Reviewed by (name + signature)..... : Laney Xie

Approved by (name + signature)..... : Levi Lee





Report Record

Report No.	Issue Date	Description	Approved
ZHT-221010004R	Oct. 14, 2022	Original	valid



Sample Description

No.	Name
1	Black metal (bicycle frame)
2	Sponge and rubber cushion
3	Black plastic (fender)
4	Black rubber
5	Black plastic (pedal)
6	Black wire
7	Silver metal (plug)
8	Printing ink
9	Black rubber
10	Black rubber (key)
11	Silver metal
12	White LED
13	Black plastic
14	Red LED (tail light)
15	Black metal
16	Chain
17	Yellow plastic
18	Black rubber (bicycle Handlebar)
19	Black wire
20	Black metal
21	Black metal
22	Yardage recorder
23	Switch



24	Viewing screen
25	Digital tube
26	Button
27	Packaging plastic
28	Black metal
29	Yellow plastic
30	Silver metal
31	White metal (disc brake disc)
32	Black metal
33	Nut
34	Black metal
35	Black silicone
36	Silver metal (screw)
37	Black tag
38	Black plastic
39	Red button
40	Black metal (Parking column)
41	Black metal (screw)
42	Chain wheel
43	Black metal (bicycle rim)
44	Rear transmission
45	Adapter

**Test Result(No.2, No.3, No.4, No.5, No.6, No.8, No.9, No.10, No.12, No.13, No.14, No.17, No.18, No.19, No.22, No.23, No.24, No.25, No.26, No.27, No.29, No.35, No.37, No.38, No.39, No.45):**

Test Item(s)	Unit	Test Method (Reference)	Result	MDL	Limit
Cadmium(Cd)	mg/kg	IEC 62321-5:2013, ICP-OES	N.D.	2	100
Lead(Pb)	mg/kg	IEC 62321-5:2013, ICP-OES	N.D.	2	1000
Mercury(Hg)	mg/kg	IEC 62321-4:2013+A1:2017, ICP-OES	N.D.	2	1000
Hexavalent Chromium(CrVI)	mg/kg	IEC 62321:2008, IEC62321-7-1:2015, IEC62321-7-2: 2017, UV-Vis	N.D.	2	1000
Sum of PBBs	mg/kg	IEC 62321-6:2015, GC-MS	N.D.	--	1000
Monobromobiphenyl	mg/kg	IEC 62321-6:2015, GC-MS	N.D.	5	--
Dibromobiphenyl	mg/kg	IEC 62321-6:2015, GC-MS	N.D.	5	--
Tribromobiphenyl	mg/kg	IEC 62321-6:2015, GC-MS	N.D.	5	--
Tetrabromobiphenyl	mg/kg	IEC 62321-6:2015, GC-MS	N.D.	5	--
Pentabromobiphenyl	mg/kg	IEC 62321-6:2015, GC-MS	N.D.	5	--
Hexabromobiphenyl	mg/kg	IEC 62321-6:2015, GC-MS	N.D.	5	--
Heptabromobiphenyl	mg/kg	IEC 62321-6:2015, GC-MS	N.D.	5	--
Octabromobiphenyl	mg/kg	IEC 62321-6:2015, GC-MS	N.D.	5	--
Nonabromobiphenyl	mg/kg	IEC 62321-6:2015, GC-MS	N.D.	5	--
Decabromobiphenyl	mg/kg	IEC 62321-6:2015, GC-MS	N.D.	5	--
Sum of PBDEs	mg/kg	IEC 62321-6:2015, GC-MS	N.D.	5	1000
Monobromodiphenyl ether	mg/kg	IEC 62321-6:2015, GC-MS	N.D.	5	--
Dibromodiphenyl ether	mg/kg	IEC 62321-6:2015, GC-MS	N.D.	5	--
Tribromodiphenyl ether	mg/kg	IEC 62321-6:2015, GC-MS	N.D.	5	--
Tetrabromodiphenyl ether	mg/kg	IEC 62321-6:2015, GC-MS	N.D.	5	--
Pentabromodiphenyl ether	mg/kg	IEC 62321-6:2015, GC-MS	N.D.	5	--
Hexabromodiphenyl ether	mg/kg	IEC 62321-6:2015, GC-MS	N.D.	5	--
Heptabromodiphenyl ether	mg/kg	IEC 62321-6:2015, GC-MS	N.D.	5	--
Octabromodiphenyl ether	mg/kg	IEC 62321-6:2015, GC-MS	N.D.	5	--
Nonabromodiphenyl ether	mg/kg	IEC 62321-6:2015, GC-MS	N.D.	5	--
--Decabromodiphenyl ether	mg/kg	IEC 62321-6:2015, GC-MS	N.D.	5	--
Dibutyl Phthalate(DBP)	mg/kg	IEC 62321-8:2017, GC-MS	N.D.	50	1000
Benzylbutyl Phthalate(BBP)	mg/kg	IEC 62321-8:2017, GC-MS	N.D.	50	1000
Di-(2-ethylhexyl) Phthalate(DEHP)	mg/kg	IEC 62321-8:2017, GC-MS	N.D.	50	1000
Diisobutyl phthalate (DIBP)	mg/kg	IEC 62321-8:2017, GC-MS	N.D.	50	1000

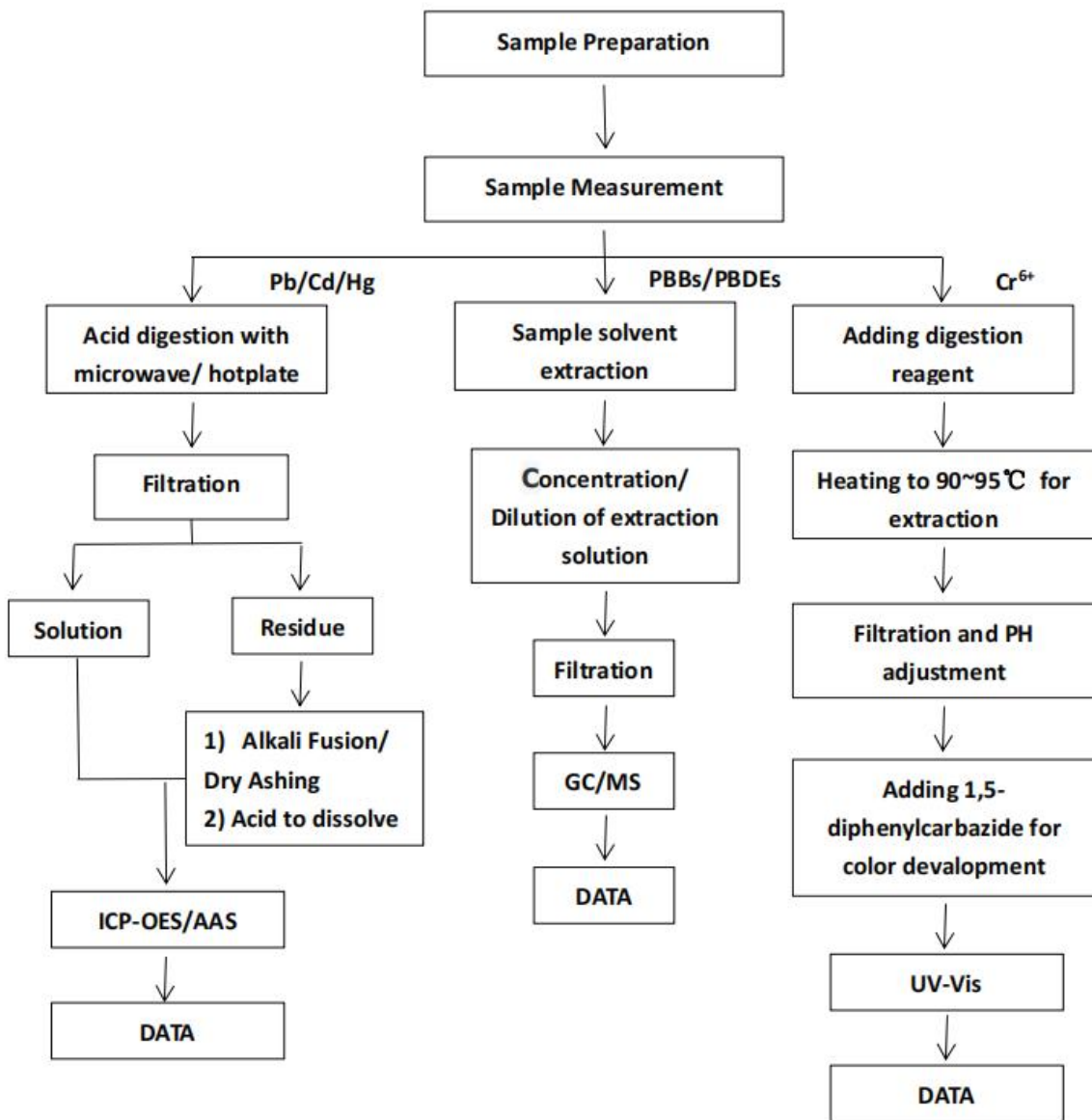
**Test Result(No.1, No.7, No.11, No.15, No.16, No.20, No.21, No.28, No.30, No.31, No.32, No.33, No.34, No.36, No.40, No.41, No.42, No.43, No.44):**

Test Item(s)	Unit	Test Method (Reference)	Result	MDL	Limit
Cadmium(Cd)	mg/kg	IEC 62321-5:2013, ICP-OES	N.D.	2	100
Lead(Pb)	mg/kg	IEC 62321-5:2013, ICP-OES	N.D.	2	1000
Mercury(Hg)	mg/kg	IEC 62321-4:2013+A1:2017, ICP-OES	N.D.	2	1000
Hexavalent Chromium(CrVI)	mg/kg	IEC 62321:2008, IEC62321-7-1:2015, IEC62321-7-2: 2017, UV-Vis	N.D.	2	1000
Sum of PBBs	mg/kg	IEC 62321-6:2015, GC-MS	--	--	--
Monobromobiphenyl	mg/kg	IEC 62321-6:2015, GC-MS	--	--	--
Dibromobiphenyl	mg/kg	IEC 62321-6:2015, GC-MS	--	--	--
Tribromobiphenyl	mg/kg	IEC 62321-6:2015, GC-MS	--	--	--
Tetrabromobiphenyl	mg/kg	IEC 62321-6:2015, GC-MS	--	--	--
Pentabromobiphenyl	mg/kg	IEC 62321-6:2015, GC-MS	--	--	--
Hexabromobiphenyl	mg/kg	IEC 62321-6:2015, GC-MS	--	--	--
Heptabromobiphenyl	mg/kg	IEC 62321-6:2015, GC-MS	--	--	--
Octabromobiphenyl	mg/kg	IEC 62321-6:2015, GC-MS	--	--	--
Nonabromobiphenyl	mg/kg	IEC 62321-6:2015, GC-MS	--	--	--
Decabromobiphenyl	mg/kg	IEC 62321-6:2015, GC-MS	--	--	--
Sum of PBDEs	mg/kg	IEC 62321-6:2015, GC-MS	--	--	--
Monobromodiphenyl ether	mg/kg	IEC 62321-6:2015, GC-MS	--	--	--
Dibromodiphenyl ether	mg/kg	IEC 62321-6:2015, GC-MS	--	--	--
Tribromodiphenyl ether	mg/kg	IEC 62321-6:2015, GC-MS	--	--	--
Tetrabromodiphenyl ether	mg/kg	IEC 62321-6:2015, GC-MS	--	--	--
Pentabromodiphenyl ether	mg/kg	IEC 62321-6:2015, GC-MS	--	--	--
Hexabromodiphenyl ether	mg/kg	IEC 62321-6:2015, GC-MS	--	--	--
Heptabromodiphenyl ether	mg/kg	IEC 62321-6:2015, GC-MS	--	--	--
Octabromodiphenyl ether	mg/kg	IEC 62321-6:2015, GC-MS	--	--	--
Nonabromodiphenyl ether	mg/kg	IEC 62321-6:2015, GC-MS	--	--	--
--Decabromodiphenyl ether	mg/kg	IEC 62321-6:2015, GC-MS	--	--	--
Dibutyl Phthalate(DBP)	mg/kg	IEC 62321-8:2017, GC-MS	--	--	--
Benzylbutyl Phthalate(BBP)	mg/kg	IEC 62321-8:2017, GC-MS	--	--	--
Di-(2-ethylhexyl) Phthalate(DEHP)	mg/kg	IEC 62321-8:2017, GC-MS	--	--	--
Diisobutyl phthalate (DIBP)	mg/kg	IEC 62321-8:2017, GC-MS	--	--	--



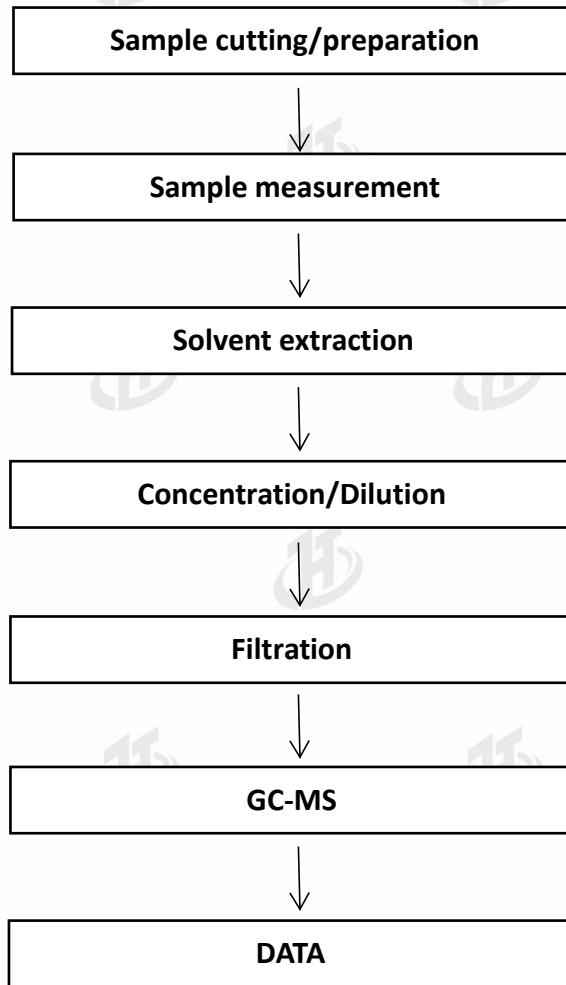
- Note:**
- 1. mg/kg= ppm
 - 2. N.D.= No Detection(<MDL)
 - 3. MDL = Method Detection Limit
 - 4. -- = No Testing

ATTACHMENT: Cd/Pb/Hg/Cr6+/PBBs&PBDEs Flow Chart





ATTACHMENT: Phthalate Testing Flow Chart





Attachment : Photo document.



Photo 1



Photo 2



Photo 3



Photo 4



Photo 5



Photo 6



Photo 7



Photo 8



Photo 9

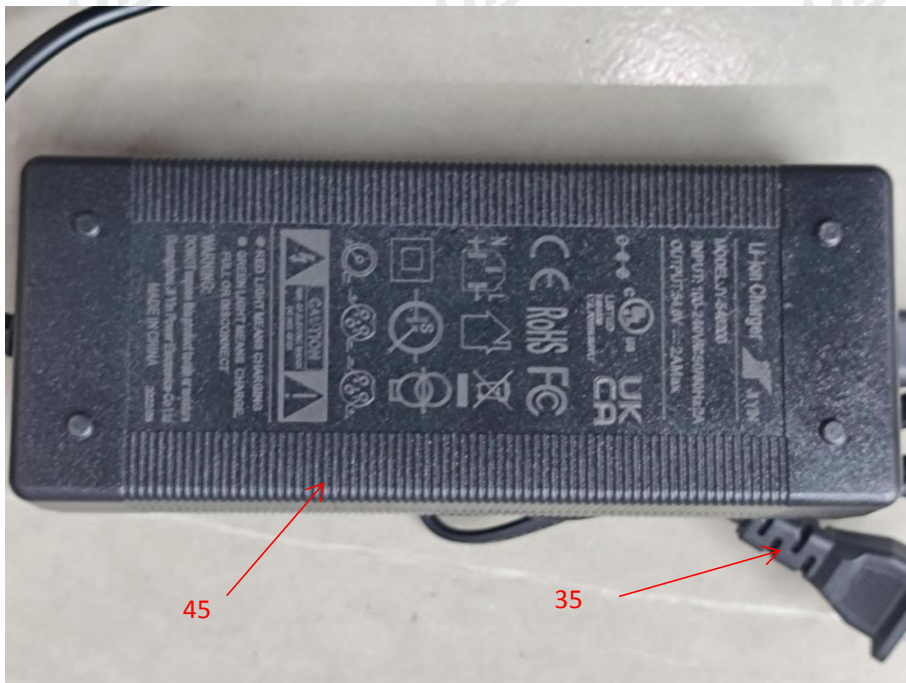


Photo 10

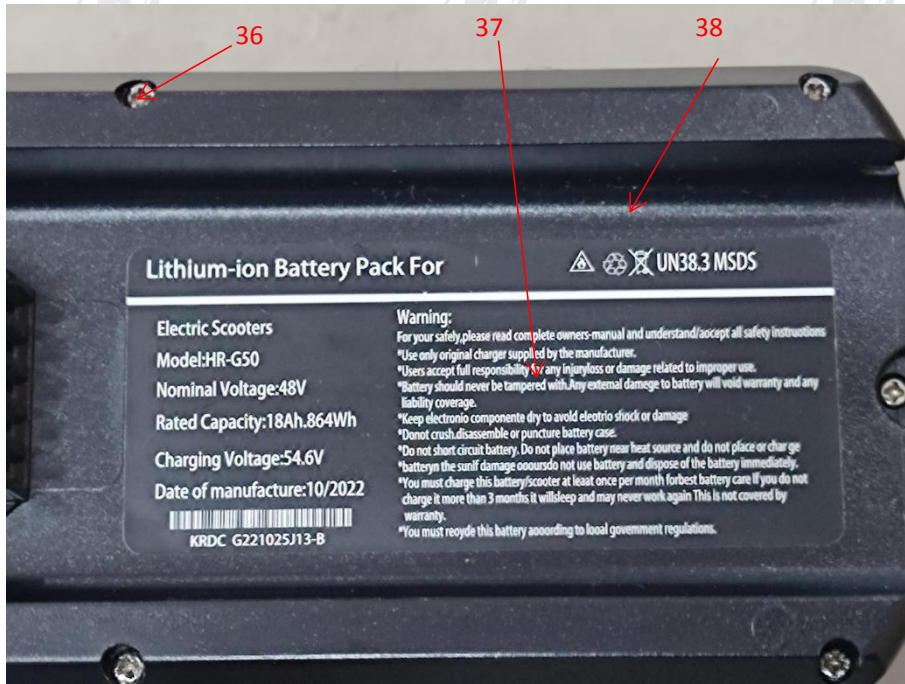


Photo 11

End of report