

Shenzhen Gaoyi Tech Limited

# TEST REPORT

**SCOPE OF WORK**

Test Report

**REPORT NUMBER**

190830023SZN-001

**ISSUE DATE**

22-Oct-2019

**REVISION DATE**

None

**NUMBER OF PAGES**

14(Including this page)

**DOCUMENT CONTROL NUMBER**

Special Test Report\_ A  
© 2018 INTERTEK





Report No.: 190830023SZN-001

# TEST REPORT

<b>Applicant</b>	:	Shenzhen Gaoyi Tech Limited
<b>Address</b>	:	4th Floor, Building D, Huafeng Industrial Zone, Hangcheng Road, Xixiang Town, Bao An District, SHENZHEN Guangdong 518126
<b>Product Description</b>		
<b><u>Name of Product</u></b>	:	car charger base
<i>Product description</i>	:	<p>Ratings:  Input: DC 12-24V, Max. 9A, Max. 108W  Output: DC 12-24V, 2A-1A total;  USB1: DC 5V3A or 9V2A or 12V1.5A Max. 18W;  USB2&amp;USB3&amp;USB4: DC 5V1.6A, 8W  The product covered in this report is a car charger, which is supplied from a vehicle cigarette lighter receptacle, and provides 4 USB ports and 3 extended vehicle cigarette lighter receptacles in parallel, these ratings see the label of output rating for details.  Mass of equipment(kg): 0.220kg  Max ambient temperature: 25°C</p>
<i>Model Number</i>	:	HC67a, HC67, HC67b, HC67C, AGCP7IN1, VM71, QD20, CC1009, JA302, ABT-E040, MCA-5168, CC1006
<i>Model differences</i>	:	All models are identical with each other except model no. and trade name.
<i>Date of Receival</i>	:	Aug. 30, 2019
<i>Date of test Conducted</i>	:	Aug. 30, 2019 ~ Sep. 30, 2019
<i>Test Conclusion:</i>	:	The products comply with the requirements listed in <u>Test Requested</u> .
<i>Other information</i>	:	None
<b>General Remark:</b> <ul style="list-style-type: none"> <li>This test report is only for evaluation of the specified standard clauses listed in <u>Test Requested</u>.</li> <li>When determine the test result, measurement uncertainty has been considered.</li> <li>Manufacturing site: Building XianJi, Num 4, ChangSHeng street, TianMei Village, HuangJiang town, DONGGUAN Guangdong 523790</li> </ul>		

This report is for the exclusive use of Intertek's Client and is provided pursuant to the agreement between Intertek and its Client. Intertek's responsibility and liability are limited to the terms and conditions of the agreement. Intertek assumes no liability to any party, other than to the Client in accordance with the agreement, for any loss, expense or damage occasioned by the use of this report. Only the Client is authorized to permit copying or distribution of this report and then only in its entirety. Any use of the Intertek name or one of its marks for the sale or advertisement of the tested material, product or service must first be approved in writing by Intertek. The observations and test results in this report are relevant only to the sample tested. This report by itself does not imply that the material, product, or service is or has ever been under an Intertek certification program.



Tested by: Mason Cui

Approved by: Tony Tong



---

Oct. 22, 2019  
Assistant Engineer

---

Oct. 22, 2019  
Senior Technical Supervisor

Test Results:

PORTABLE ELECTRIC LUMINAIRES – UL2089		
Clause	Description Requirement	Verdict
22	General	P
23	Maximum Output voltage	P
24	Power input	P
25	Temperature	P
26	Dielectric Voltage Withstand	P
27.2	Reverse Polarity	N/A
27.3	Component breakdown test	P
27.4	Battery-Supply Cord Short Circuit	P
27.5	Abnormal Temperature Test	P
28	Resistance to crushing test	P
29	Strain Relief	P
30	Push-Back Relief Test	P
PORTABLE ELECTRIC LUMINAIRES – CAS C22#107.1		
6.3	Temperature	P
6.5	Dielectric Voltage Withstand	P
6.12	Resistance to impact	P
6.17	Strain Relief Test	P
18.4.2 a)	Abnormal	P
18.4.2 c)	Non-metallic enclosure (mold stress test)	P
18.4.2 d)	Output voltage variation	P
18.4.4 & 18.4.5	Normal temperature test	P
PORTABLE LUMINAIRES – UL 746C		
29	Mold Stress Relief Distortion	P
30	Strain Relief Test after Mold Stress Relief Distortion	P
<b>Possible test case verdicts:</b> - test case does not apply to the test object..... : N/A - test object does meet the requirement ..... : P (Pass) - test object does not meet the requirement ..... : F (Fail)		



Appendix 1: Critical components information					
Component Name	Manufacturer/ trademark	Type / model	Technical data	Standard	Mark(s) of conformity
Plastic Enclosure	CHI MEI CORPORATION	PA-765(+)	V-0, 80°C, Min. thickness: 1.5mm, HWI=2, HAI=0, Ultrasonic welding for fixing	UL 94	UL E56070
Input contact (passive)	Various	Various	Diameter: 5.1mm, plated steel	UL 2089, CSA C22.2#107.1	Tested in equipment
Input contact (negative)	Various	Various	Min. Width: 4.9mm, thickness: 0.5mm, plated steel	UL 2089, CSA C22.2#107.1	Tested in equipment
Switch	LEGION ELECTRONIC CO LTD	MPS11	250V, 10A	UL 1054	UL E153399
Fuse (F on cigarette lighter board)	DONGGUAN REOMAX ELECTRONICS TECHNOLOGY CO LTD	STC	250Vac, 10A	UL 248-1	UL E340427
Fuse (F1 on cigarette lighter receptacle board)	CHNBEL ENERGY TECHNOLOGY CO LTD	12. 110	63Vdc, 5A	UL 248-1	UL E365879
PCB material	SHENZHEN KESHIJIA ELECTRONICS CO LTD	KSJ-A01	130°C, V-0	UL 796 UL 94	UL E464917
Line filter (LF1 on cigarette lighter receptacle board)	Various	Various	300uH	UL 2089, CSA C22.2#107.1	Tested in equipment
Magnet wire in Line filter (LF1 on cigarette lighter receptacle board)	Various	Various	Min. 130°C	UL 1446	UL
Line filter (L1 and L2 on cigarette lighter receptacle board)	Various	Various	22uH	UL 2089, CSA C22.2#107.1	Tested in equipment

Magnet wire in Line filter (L1 and L2 on cigarette lighter receptacle board	Various	Various	Min. 130°C	UL 1446	UL
Internal wire	DONGGUAN WENCHANG ELECTRONIC CO LTD	1430	VW-1, 105°C, 300Vac, 18AWG	UL 758	UL E214500
Flexible cords	DONGGUAN NANFANG INDUSTRIAL CO., LTD	SVT	2 cores, 18AWG, 300Vac, 105°C, Min. length: 0.9m	UL 62, CSA C22.2 No. 49-14	Issued by Intertek Testing Services NA Inc. with ETL report no. 150831085 GZU-002.
Remark:					



## Appendix 2: Marking



Model:AGCP7IN1  
Name:car charger base  
Input:DC===12-24V, Max. 9A, Max. 108W  
Output:DC===12-24V, 2A-1A total;  
USB1:DC=== 5V3A or 9V2A or 12V1.5A Max. 18W; USB1:DC=== 5V3A or 9V2A or 12V1.5A Max. 18W;  
USB2&USB3&USB4: DC=== 5V1.6A, 8W  
Shenzhen Gaoyi Tech Limited



Model:VM71  
Name:car charger base  
Input:DC===12-24V, Max. 9A, Max. 108W  
Output:DC===12-24V, 2A-1A total;  
USB1:DC=== 5V3A or 9V2A or 12V1.5A Max. 18W; USB1:DC=== 5V3A or 9V2A or 12V1.5A Max. 18W;  
USB2&USB3&USB4: DC=== 5V1.6A, 8W  
Shenzhen Gaoyi Tech Limited



Model:QD20  
Name:car charger base  
Input:DC===12-24V, Max. 9A, Max. 108W  
Output:DC===12-24V, 2A-1A total;  
USB1:DC=== 5V3A or 9V2A or 12V1.5A Max. 18W; USB1:DC=== 5V3A or 9V2A or 12V1.5A Max. 18W;  
USB2&USB3&USB4: DC=== 5V1.6A, 8W  
Shenzhen Gaoyi Tech Limited



Model:MCA-5168  
Name:car charger base  
Input:DC===12-24V, Max. 9A, Max. 108W  
Output:DC===12-24V, 2A-1A total;  
USB1:DC=== 5V3A or 9V2A or 12V1.5A Max. 18W; USB1:DC=== 5V3A or 9V2A or 12V1.5A Max. 18W;  
USB2&USB3&USB4: DC=== 5V1.6A, 8W  
Shenzhen Gaoyi Tech Limited



Model:JA302  
Name:car charger base  
Input:DC===12-24V, Max. 9A, Max. 108W  
Output:DC===12-24V, 2A-1A total;  
USB1:DC=== 5V3A or 9V2A or 12V1.5A Max. 18W; USB1:DC=== 5V3A or 9V2A or 12V1.5A Max. 18W;  
USB2&USB3&USB4: DC=== 5V1.6A, 8W  
Shenzhen Gaoyi Tech Limited



Model:ABT-E040  
Name:car charger base  
Input:DC===12-24V, Max. 9A, Max. 108W  
Output:DC===12-24V, 2A-1A total;  
USB1:DC=== 5V3A or 9V2A or 12V1.5A Max. 18W; USB1:DC=== 5V3A or 9V2A or 12V1.5A Max. 18W;  
USB2&USB3&USB4: DC=== 5V1.6A, 8W  
Shenzhen Gaoyi Tech Limited



Model:CC1006  
Name:car charger base  
Input:DC===12-24V, Max. 9A, Max. 108W  
Output:DC===12-24V, 2A-1A total;  
USB1:DC=== 5V3A or 9V2A or 12V1.5A Max. 18W; USB1:DC=== 5V3A or 9V2A or 12V1.5A Max. 18W;  
USB2&USB3&USB4: DC=== 5V1.6A, 8W  
Shenzhen Gaoyi Tech Limited



Model:CC1009  
Name:car charger base  
Input:DC===12-24V, Max. 9A, Max. 108W  
Output:DC===12-24V, 2A-1A total;  
USB1:DC=== 5V3A or 9V2A or 12V1.5A Max. 18W; USB1:DC=== 5V3A or 9V2A or 12V1.5A Max. 18W;  
USB2&USB3&USB4: DC=== 5V1.6A, 8W  
Shenzhen Gaoyi Tech Limited



Note 1: The model no. and trade mark as above will be replaced by another one listed in this report.

Note 2: The making will be silk-screen printed on the product.



**Appendix 3: Product Photos**



Overview-1



Overview-2





Overview\_3



Overview\_4





Overview\_5



Overview\_6



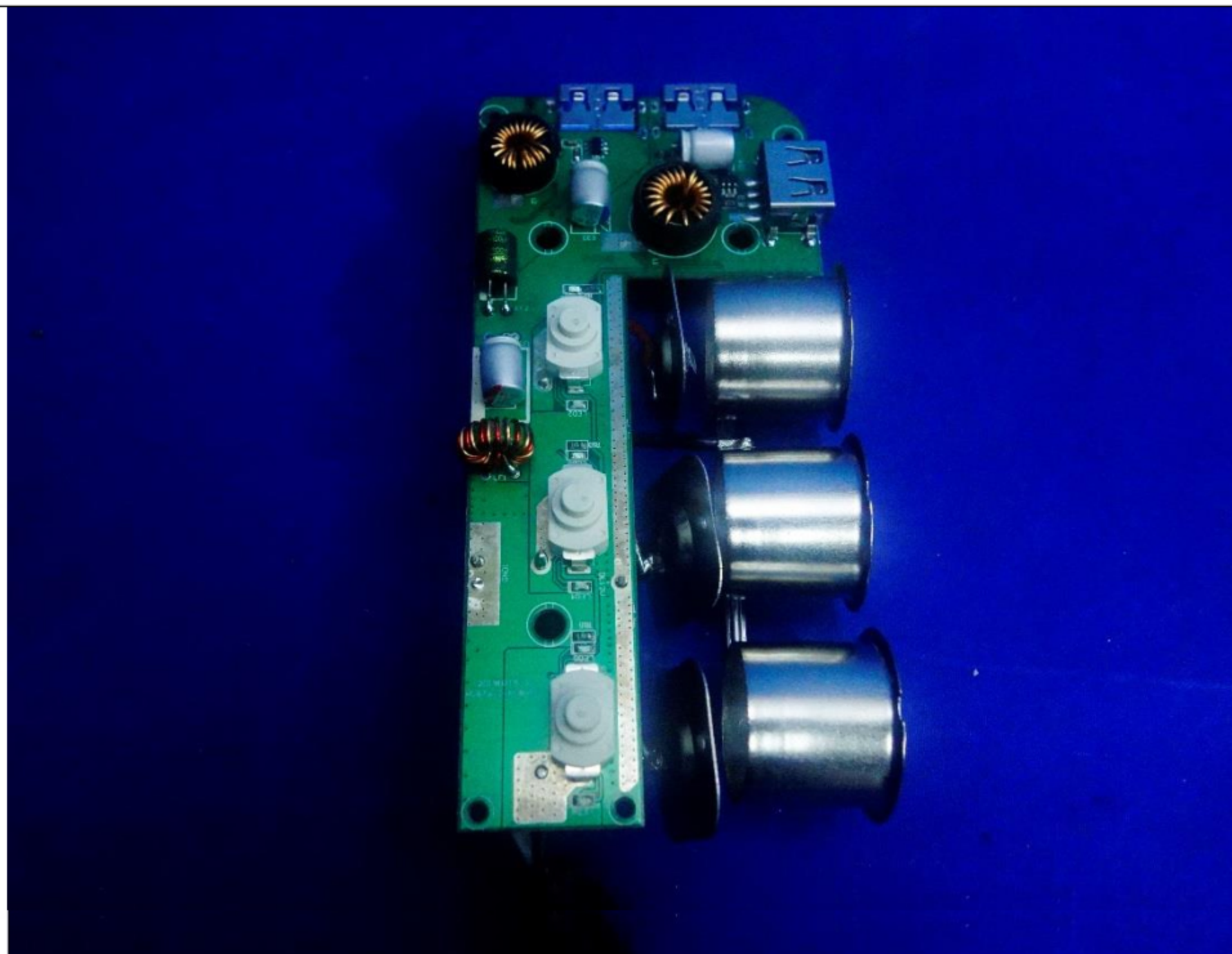


Internal view\_1 with cigarette lighter receptacle



Internal view\_2 with cigarette lighter receptacle



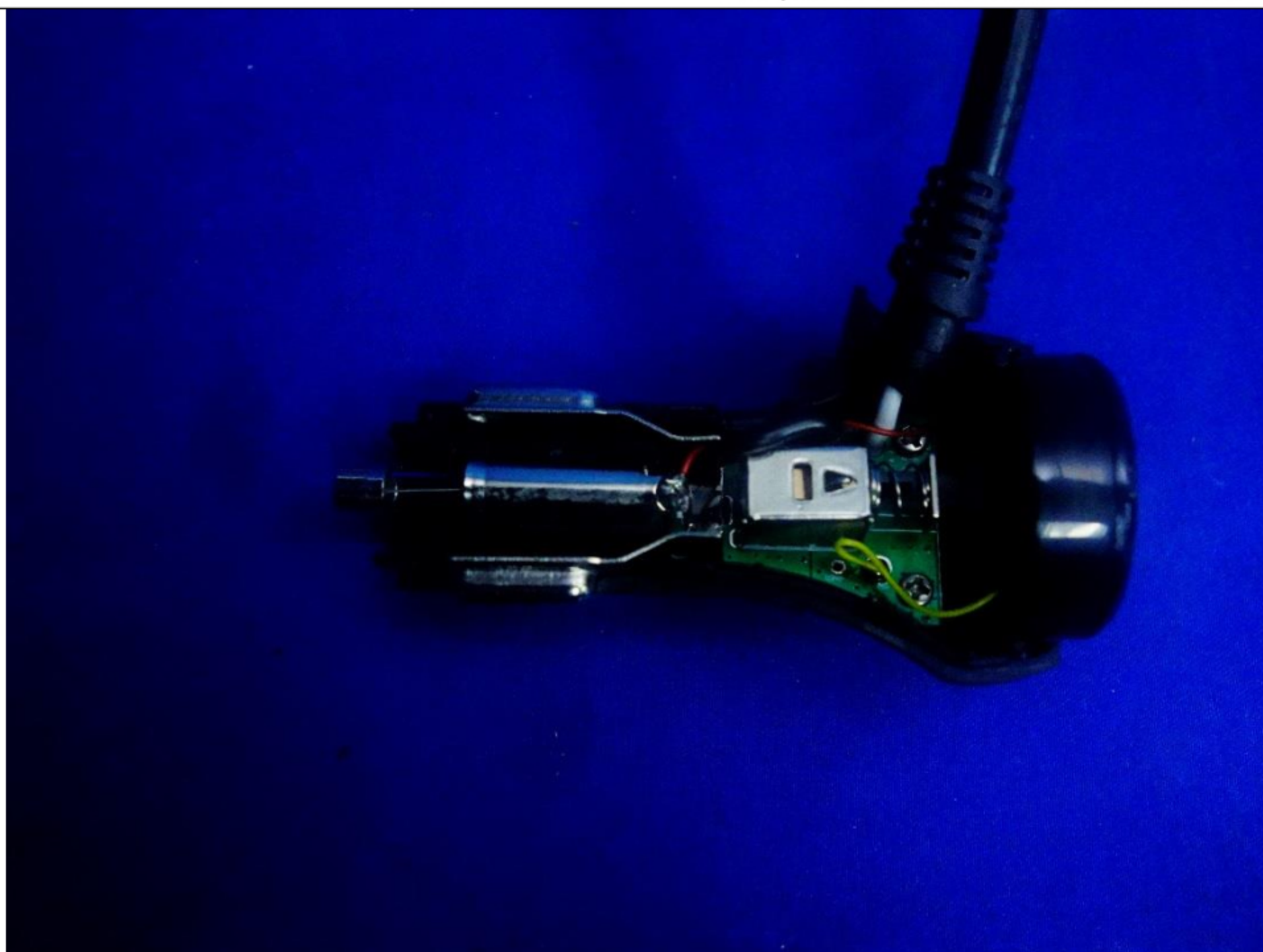


Internal view\_3 with cigarette lighter receptacle

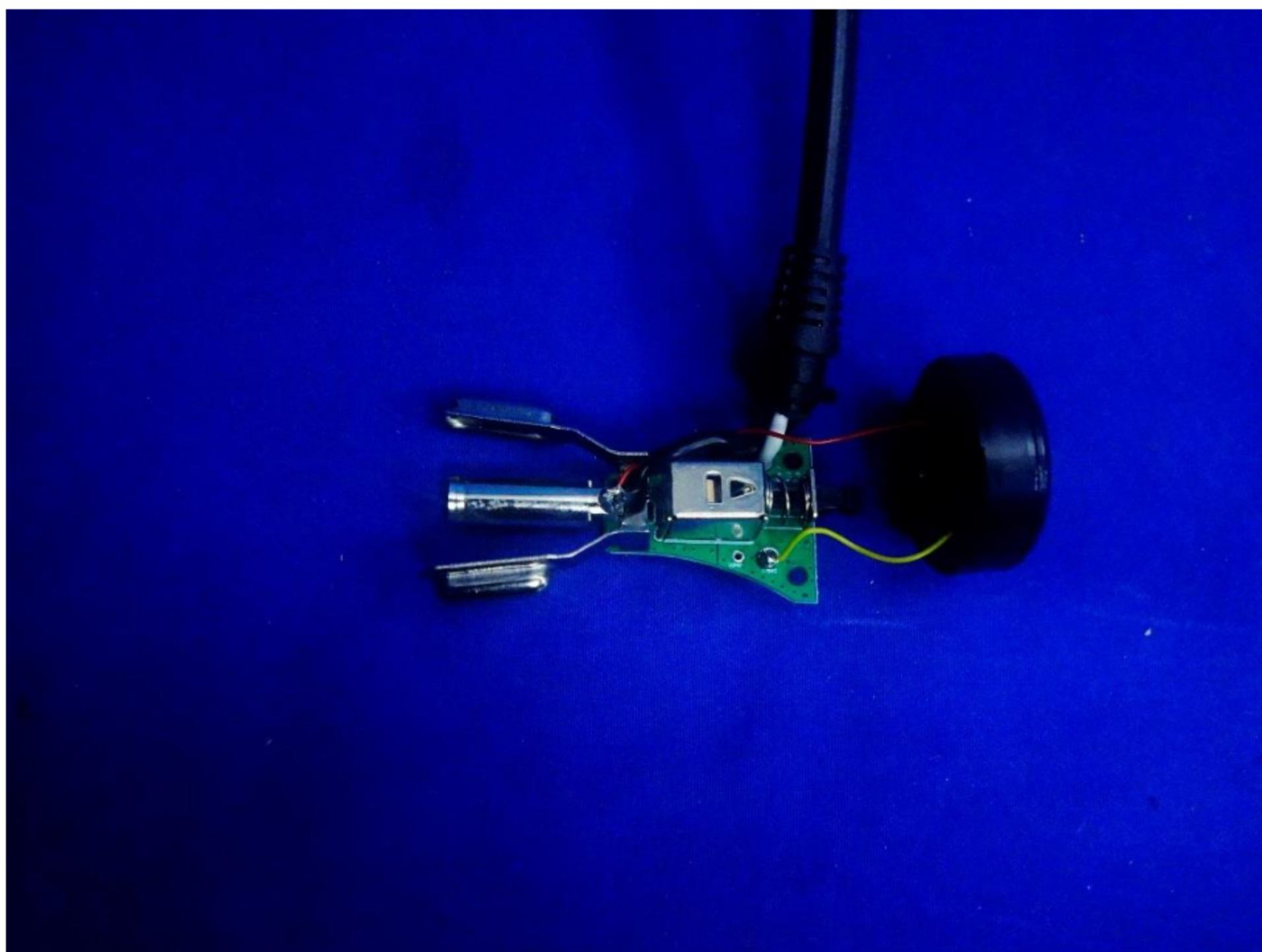


Internal view\_1 with cigarette lighter



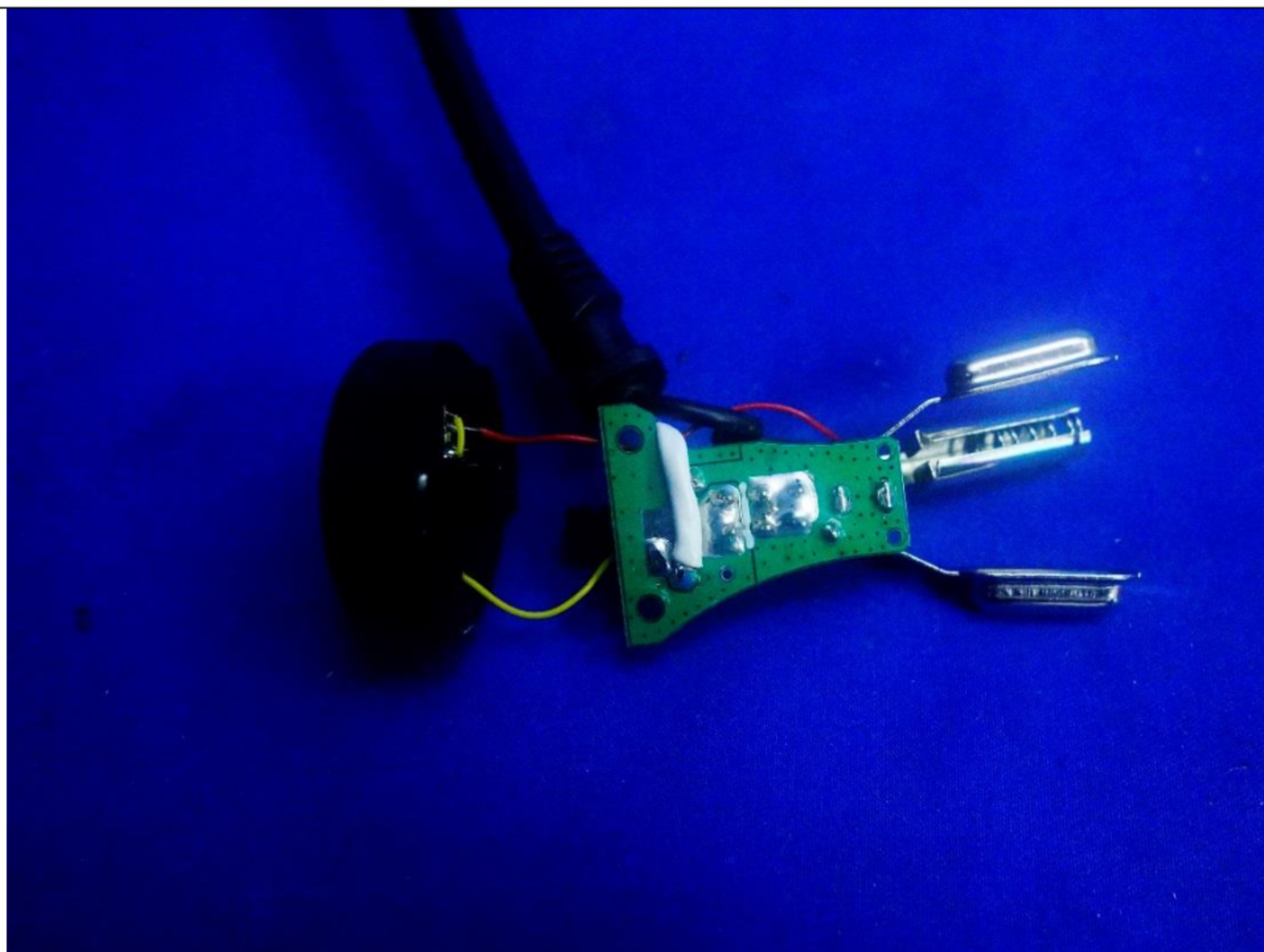


Internal view\_2 with cigarette lighter

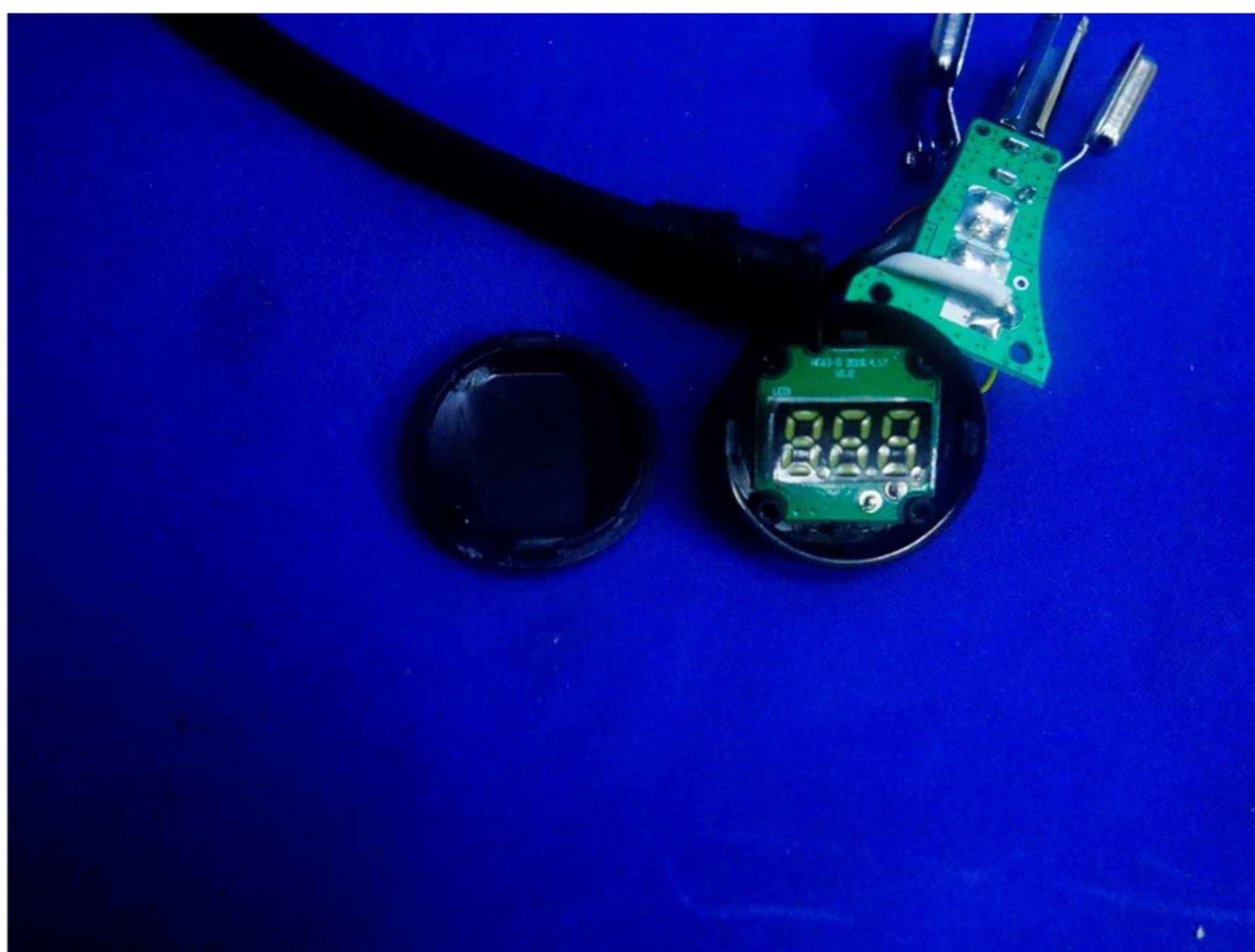


Internal view\_3 with cigarette lighter





Internal view\_4 with cigarette lighter



Internal view\_5 with cigarette lighter

\*\*\*\*\* End of report \*\*\*\*\*