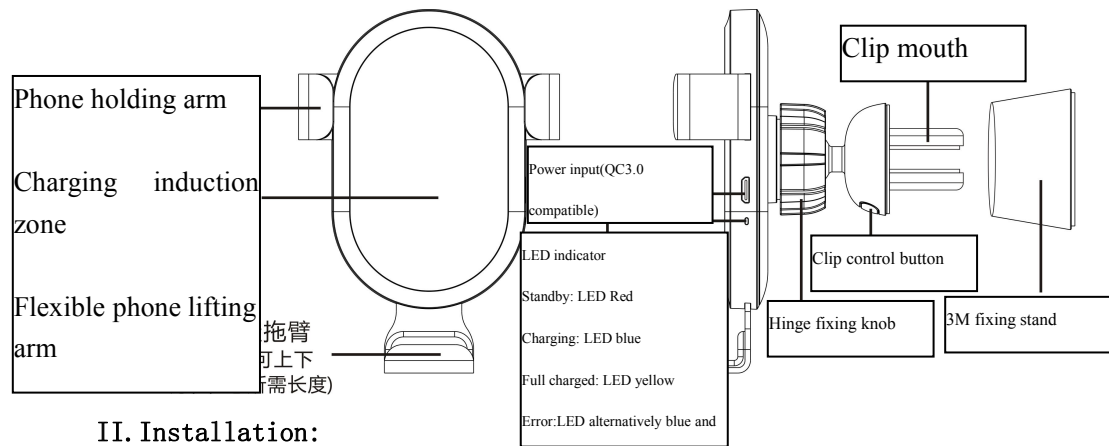


# Wireless Car Charger

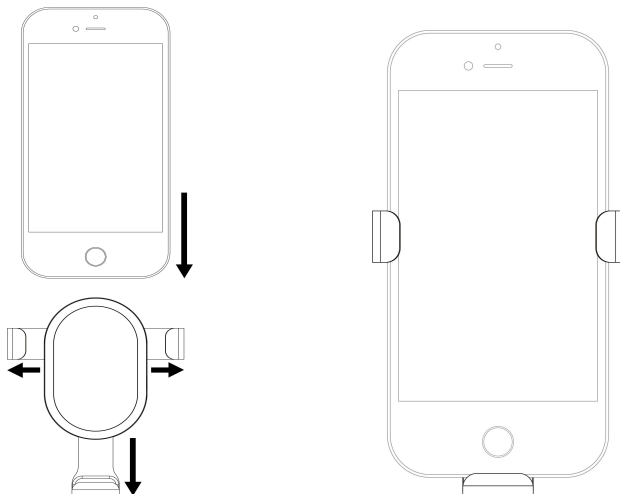
Thank you for choosing this product, a smart wireless car charger!Please read this user manual carefully before use!

## I. Production appearance



## II. Installation:

Open the clip mouth and fix to air conditioner vent or Use the 3M fixing stand and stick on central console, then put in the mobile phone



Note: For iPhone, there is no full charged LED indication, It is normal if LED lights blue and yellow alternatively; please judge the charging status according to battery icon of the screen.

## III. Tech Specifications

Input voltage	5V/2A 9V/1.67A
Output voltage	5V/1A 9V/1.1A
Output power	MAX 10W
Quick charge	Support QC3.0
Wireless charging distance	≤8MM
Charging mode	induction
Protection	Over current/voltage/temperature and short-circuit protection
Coil	A11
Charging efficiency	>75%
Material	ABS+PC+Aluminium alloy fireproof/high temperature resistance+
Working temperature	-5℃to45℃
Net weight	88g

## IV. Packaging

1.Main device 2.USB cable 3.User Manual