

Head Up Display

User Manual

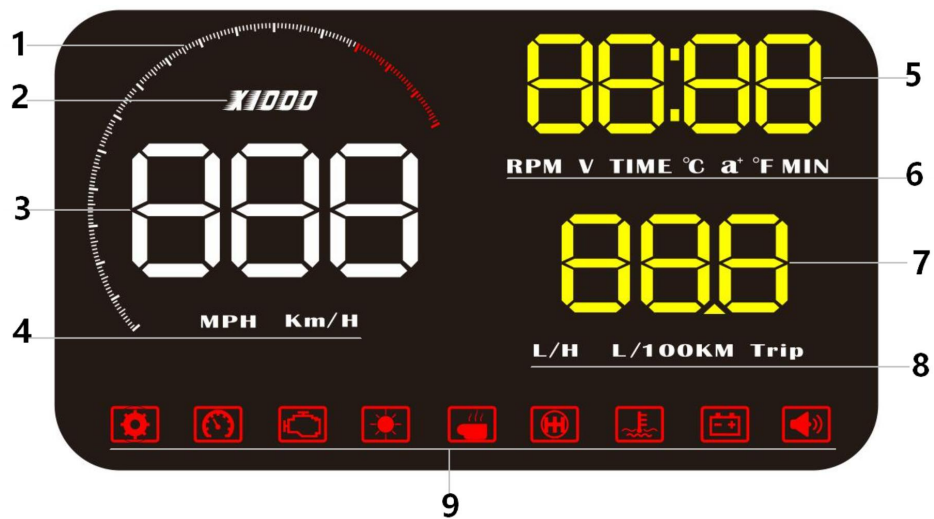
Model: A9

HUD short for Head Up Display. It displays driving data on the front windshield such as speed, rpm, fuel consumption, water temperature, voltage; avoiding drivers become dangerous because of watching the instrument while driving. Drivers can read the driving information instantly, and can always keep the best state on the way with HUD.

HUD Main Functions&Features:

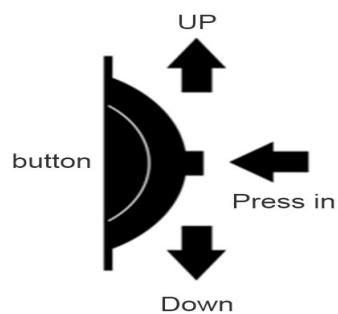
1. Available for cars with OBD2 and EOBD port (Car automatic diagnosis system), plug and play
2. Screen 5.5 inch HD display
3. Multi-color design makes the screen more abundant and easier to read
4. Nano-technology to eliminate double reflections, more clear.
5. New function: Driving distance measurement
6. Rich Contents: speed, RPM, water temperature, voltage, instantaneous fuel consumption, average fuel consumption, driving distance measurement, voltage, shift reminders, fatigue driving reminders, low voltage alarm, high water temperature alarm, over speed alarm, engine failure alarm, eliminate the fault code, freely switch between kilometers&miles.
7. Auto power on/off: HUD start and off with vehicle started and shutdown, effective protection of the car battery; retaining the manual switch mode, more easy to control HUD.
8. Automatic and manual brightness adjustment mode, driving without glare

Display Function:



1. Decorative light
2. Engine RPM
3. Speed
4. Speed unit (KM/H, MPH)
5. Multi-functional area 1 : Engine RPM, voltage, Clock, single driving time(MIN), water temperature(°C/° F), 100 km acceleration time(a+)
6. Unit for multi-functional area 1
7. Multi-functional area 2: fuel consumption, Trip distance
8. Unit for multi-functional area 2
9. Icon: setting, over speed alarm, fault code, light sensor, fatigue alarm, shifting reminding, water temperature alarm, low voltage alarm, buzzer mark

HUD keys functions (When the button on the left side)



Long pull up: When HUD in normal state, Pull up the wave button for 5 seconds, all the lights will turn on, it means clear the engine fault code.

Long pull down: Turn off/ Turn on the buzzer

Long press in: (1) to enter into setting menu (2) once finished the setting, to save and exit

Short press in: (1) when HUD is working, to switch the multi functions of RPM/water temperature/Driving time (2) in the setting mode, to change the menu option

Short pull up: (1) when HUD is working, to switch the instantaneous fuel consumption, fuel consumption for 100km, single driving distance (2) in the setting mode, to increase the default value

Short pull down: in the setting mode, to decrease the default value.

Reset setting:

When the HUD turns off, long press-in the setting button and at the same time turn on the HUD, all the lights will be on, and then release the button, that's factory reset.

Clearing engine fault codes:

Pull up the wave button 5 seconds to clear the engine fault code when HUD in normal state

Buzzer Icon:

Pull down: pull down the wave button 5 seconds to turn off the buzzer, another 5 seconds to turn on the buzzer.

Clock calibration (this device doesn't have battery, it needs to calibrate the clock once power off)

Long press in the button for 5 seconds to enter into the menu, short press in the button 15 times, find menu 15, it displays 12:00 and flash, pull left to switch the hour and minute, pull right to adjust the digital number, once finished, long press in the button for 5 seconds to save and exit.

Menu setting Mode Explanation

Please refer to the dashboard projection to adjust. Long press in the button for 5 seconds to enter into the menu, pull left/right to change the value, short press in the button to change the menu option (from menu 1 to menu 16), long press in the button for 5 seconds to save and exit.

Menu option	Functions	Range of Adjustment value	Explanation	Default value
1	speed	50-150	When the Speed is not the same as dashboard,need to adjust. E.g. if the HUD speed is 3 faster than the dashboard,then set the value at 104	107
2	Fuel consumption	50-150	If the HUD fuel is different as dashboard, then adjust it	100
3	RPM Alarm	10-75	When RPM over 7500, HUD will give alarm(75=7500)	75
4	Shift reminder	10-75	When RPM reaches 7500, HUD will give the shift reminder(75=7500)	75
5	Four-stage speed alarm	0-1	0=turn off the four-stage alarm 1 =turn on the four-stage alarm (60KM/H,80KM/H,100KM/H,120KM/H),s peed alarm shows up when it reaches to above four speed	0
6	Single-stage Speed alarm	30-250	HUD will give the alarm when the speed over than 150	150
7	Brightness	0-11	0=automatic adjustment, 1-11 the brightness will be increased as the No. added	0
8	Water temperature alarm	50-150	Once the water temperature is more than 120,it will alarm.	120
9	Voltage alarm	0-15.0	If the voltage is less than 10.0,it will alarm.	10.0
10	Fatigue driving reminder	1.0-8.0	It will give the alarm when driving time more than 4 hours.	4.0
11	Speed unit	1-2	1=KM 2=Mile	1
12	Water temperature unit	1-2	1= °C 2 = °F	1
13	Reference start voltage	0-15.0	If this HUD cannot automatically turn off, adjust it to 13.2	0
14	Power off time	20-300	The default value for HUD shutdown time is 20 seconds,when the car is gas-electric hybrid and automatic start/stop system, you can delay the shutdown time(e.g. 180s)	20
15	Clock calibration	12-hour system	Pull left to switch the hour/minute, pull right to change the number	12: 00
16	Reset setting	0-1	Set to 1,vertically press the setting button for 5s, then return to the display interface	0

Warning

If do not use HUD for a long time, please pull out the cable

Troubleshooting

1.The screen without any display, and no power

Start the car engine; check if the OBD cable line is tight; please pull out the OBD cable more times to ensure; check if HUD power switch turns on. If still no display, please change another car to test, analyze whether the car OBD diagnostic interface is good, if it is not good, please repair it and try again.

2.When HUD power on, HUD only shows the car voltage and be automatic power off after a few seconds driving.

OBD mode only available for cars with OBD2 and EU-OBD agreement(European region: after 2003 years, Other region: after 2007 years)
HUD Products don't support JOBD and OBDI protocol.

3.The device is stuck or stuck during driving

Check the OBD interface if connected with other OBD device, please remove other OBD devices and do the factory reset (find menu 16).

4.Inaccurate Speed

(1)First check speed unit is correct or not, the speed unit including KM/H or MPH (refer to menu 11)

(2) When HUD is power on, vertical press the setting button for 5 seconds to enter into the menu 1 and the parameter shows 107, push left or right the setting button to increase or decrease the value according to the difference until it shows correct one. After adjustment, vertical press in 5 seconds to save it.(Example:If the dashboard shows 100,and HUD shows 103,then change the HUD default value from 107 to 104)

5.Inaccurate fuel consumption

The unit for fuel consumption is L/100KM, HUD display is the single driving fuel consumption, while car display is Integrated average driving fuel consumption, so it is normal if there are difference.

HUD display three kinds of fuel consumption

- a. Idle mode: HUD display Instantaneous fuel consumption per hour (L/H), it means HUD can figure out how much oil the car will consumed after start engine in one hour
- b. Driving mode: HUD display Instantaneous fuel consumption of 100KM

c. Finish driving: HUD display is average fuel consumption of 100KM, when turn off the car, HUD will auto turn off in 10s

6.Stop-star cars,HUD shutdown after braking

Vertical press in 5 seconds to enter into menu setting, short press 14 times to menu 14, the default parameter is 20, push left or right to change to 180, then power off time will be 3 minutes,then vertical press in 5 seconds to save and exit,HUD will power off in 3 minutes.

7.HUD can not auto power off(RPM or Speed not at 0)

When HUD is power on,long press in the button for 5 seconds to enter into menu,set to menu 13. Change the voltage from 0 to 13.2V or 13.5V. Once the adjustment finished,long press in the setting button for 5 seconds to save and exit.

8.When HUD turn off, but restart

Find menu 13, adjust the default to 13.6-13.8 V

9.Clock calibration (this device doesn't have battery,it needs to calibrate the clock once power off)

Long press in the button for 5 seconds to enter into the menu,short press in the button 15 times,to menu 15,it displays 12:00 and flash,pull left to switch the hour and minute,pull right to adjust the digital number,once finished ,long press in the button for 5 seconds to save and exit.

Technical Parameters:

Environment temperature: -40c- + 1200c atmospheric pressure 86-106KPa

Relative Humidity: 10% -95% environmental noise <= 60dB (A)

Alarm sound level: "= 30dB (A)

Working voltage: 11V ~ 18Vdc (12Vdc / 400mA)

Display way:Virtual image reflection

Display screen :LED Display