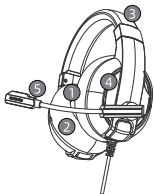


**Lenovo**<sup>™</sup>

# GAMING HEADSET

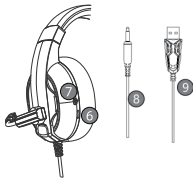
HU75  
USER GUIDE

## PRODUCT INTRODUCTION



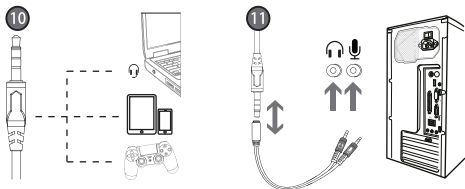
1. Ultra-thin diaphragm / magnetic chips / surrounding stereo subwoofer;
2. Soft leather earmuff which can reduce hearing damage;
3. Light weight design with adjustable headband to ensure the best wearing experience;
4. Colorful and luminous LED;
5. Bendable and high sensitivity microphone;

6. Volume control button;
7. Microphone on-off button;
8. International standard (CTIA) 3.5mm 4-pin jack.  
(right channel + / ground wire + / left channel + / microphone);
9. USB for power supply and LED lights;



10. Could be used for different single audio plug devices;

11. Connect to a bisected adapter to connect with the dual-plug computer .



## PACKING LIST

- 1) Gaming headset;
- 2) Operating instruction.

## PRODUCT PARAMETERS

Speaker size	50mm	Mic impedance	2.2k $\Omega$
Impedance	32 $\Omega$ $\pm$ 15%	Mic directivity	Omnidirectional
Sensitivity	110dB $\pm$ 3dB	Cable length	2.2m $\pm$ 0.15
Frequency range	20Hz-20kHz	LED working voltage	DC5V $\pm$ 5%
Microphone	6.0*5.0mm	Working current	$\leq$ 100mA
Mic sensitivity	-56 $\pm$ 3dB	Headset jack	USB+3.5mm 4 pin jack

## COMPATIBILITY INFORMATION

Console / Device	Compatibility		Console / Device	Compatibility	
	Microphone	Audio		Microphone	Audio
XBOX ONE	Adapter Needed		Nintendo Switch	✗	✓
XBOX ONE S	✓	✓	Nintendo New 3DS LL/3DS	✗	✓
XBOX 360	✗	✗			
PlayStation 4	✓	✓	Nintendo 3DS LL/3DS	✗	✓
PS Vita	✓	✓			
PSP	✗	✓	Appareil iOS	✓	✓
PC	✓	✓	Appareil Andoird	✓	✓
Laptop	✓	✓			

## RANGE OF APPLICATION AND OPERATING INSTRUCTIONS

1. The headset can be connected to 3.5mm quadropole single plug audio devices such as laptop, tablet PC, mobile phone, etc. The headset could be connected to a dual-plug audio computer with a bisected adapter;
2. The cable or microphone end are designed on the left-side, please wear the headset with the cable and microphone on the left side;
3. When using the headset on computer, please make sure the microphone switches on both the headset and computer are on. Please find the "speaker" icon in the computer task bar, and double-click to enter the volume control settings, and enter into the "voice " settings on the "Control Panel".
4. Please make sure the headset volume adjust button at minimum volume, and then adjust to appropriate volume.
5. Please enjoy the game with the headset.
6. Support the 32-bit and 64-bit Win10/PX/ Win7 / Win8.1 system.

## FREQUENTLY ASKED QUESTIONS

1. When playing music with the headset, there is accompaniment but no singing voice?
  - A) The headset plug is quadripolar single plug type applied with the most used international (CTIA) standard. If the international standard headset is connected to a non-international standard interface, it will lead to a situation of background sound only. If the audio device is non-international standard, an adapter cable is needed.
2. When playing music with the headset, there's sound but the microphone doesn't work?
  - A) When using the headset, please make sure that the tone control microphone switch is on, and make sure that the microphone works normally;
  - B) The headset plug is quadripolar audio jack. Please make sure your device is applicable to this standard.
  - C) The headset plug is quadripolar, single plug type, while your device might be of tripolar.
  - D) With a 3.5mm jack bisected adapter, you can connect the headset with the computer with 3.5mm two audio plug (headphone and microphone). You can enjoy both the music and chatting at the same time.

3. When playing music with the headset, there are situations of noise, small volume, unclear sound, or one side with sound and the other side without?
- A) Please check if the plug is well inserted into the device;
  - B) The headset plug is quadru-polar, while your device may be of tripolar;
4. When using the headset, there is sound of the current?
- A) Please check if the plug is well inserted into the device;
  - B) There are electrics of strong magnetic field around, please keep them away (such as mobile phone, fan...)
  - C) Please check if the computer microphone boost mode is on. Please click the control panel - sound - record - level - microphone boost, to adjust the microphone boost mode.

### ATTENTION

- A) Please enjoy music at a moderate volume to prevent damage on hearing;
- B) Please be careful when wearing the headset while driving or cycling so as not to affect safety;
- C) Product specifications are subject to change without notice;
- D) If the headset is disassembled without authorization, we cannot guarantee the quality.

## IMPORTANT SAFETY INFORMATION

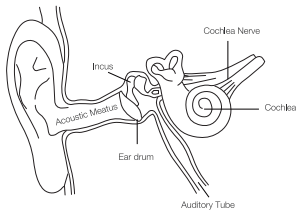
- Don't remove or replace the Battery, including sensitive electronic components, including a battery, and can be damaged or cause injury if dropped, burned, punctured, crushed, disassembled, or if exposed to excessive heat or liquid. Don't use damaged batteries and electronic components.
- Disposal and recycling information  
Don't treat the product and battery as a household waste or into a fire. When you decide to dispose of the product and its battery, please follow the local environmental laws to handle the battery to avoid an explosion.
- Medical device interference  
The product contains components and radios that emit electromagnetic fields and also contains magnets. These electromagnetic fields and magnets may interfere with pacemakers, defibrillators, or other medical devices. Maintain a safe distance of separation between your medical device and product. Consult your physician and medical device manufacturer for information specific to your medical device. Stop using product if you suspect it is interfering with your pacemaker, defibrillator, or any other medical device.

## ■ Listen Responsibly

To avoid hearing impairment, please make sure to turn down the volume of the music player before connecting the earphones. After putting the earphones into/onto the ears, turn up the volume gradually until to a comfortable listening level. Noise level is measured in decibels (dB). Exposure to 85dB or higher noise will lead to gradual hearing impairment. Please supervise your usage and the hearing impairment is a function of loudness against time.

The louder the sound is, the shorter you can be exposed. The softer the sound is, the longer you can listen.

## ■ Ear physiology diagram



## ■ Use Responsibly

Don't use headphones in unsafe situations, such as driving, crossing the street, or engaging in anything that requires concentration or in such an environment. Using earphones while driving is not only dangerous, but also breaking the law in many places because it reduces the chances that you will hear the sounds of your life outside your car, such as those of other cars Sirens and ambulance sirens. Don't wear headphones while driving. Instead, you can use the in-car FM transmitter to listen to content on mobile media devices.

## NURSING AND WEAR CONSIDERATIONS

- Periodically clean, especially the parts in contact with the skin. Use a clean, moist cloth.
- Do not allow the product to come into contact with hot and acidic liquids.
- Wear loosely, to ensure that the air circulation.
- Remove the product from time to time, in order to clean, but also let the skin freely.
- Do not open the housing or demolition.
- Do not use if the display breaks.
- Do not place the product in the washing machine or drying machine.

- Do not expose your product to extremely high or low temperatures.
- Do not sweat in the sauna or steam room to use the product.
- Do not make the product for a long time by the direct sunlight.
- Do not place the product in a fire process. The battery may explode.
- Do not use abrasive cleaners to clean the product.
- If the product gets wet, do not charge.
- If you feel product in the heat, remove it.

Environmental, recycling, and disposal information

## General recycling statement

Lenovo encourages owners of information technology (IT) equipment to responsibly recycle their equipment when it is no longer needed. Lenovo offers a variety of programs and services to assist equipment owners in recycling their IT products. For information on recycling Lenovo products, go to:

<http://www.lenovo.com/recycling>



Electrical and electronic equipment marked with the symbol of a crossed-out wheeled bin may not be disposed as unsorted municipal waste. Waste of electrical and electronic equipment (WEEE) shall be treated separately using the collection framework available to customers for the return, recycling, and treatment of WEEE. Country-specific information is available at:

<http://www.lenovo.com/recycling>

## Recycling information for India

Recycling and disposal information for India is available at:

[http://www.lenovo.com/social\\_responsibility/us/en/sustainability/ptb\\_india.html](http://www.lenovo.com/social_responsibility/us/en/sustainability/ptb_india.html)

## Battery recycling mark



Battery recycling information for the European Union

Batteries or packaging for batteries are labeled in accordance with European Directive 2006/66/EC concerning batteries and accumulators and waste batteries and accumulators. The Directive determines the framework for the return and recycling of used batteries and accumulators as applicable throughout the European Union. This label is applied to various batteries to indicate that the battery is not to be thrown away, but rather reclaimed upon end of life per this Directive. In accordance with the European Directive 2006/66/EC, batteries and accumulators are labeled to indicate that they are to be collected separately and recycled at end of life.

The label on the battery may also include a chemical symbol for the metal concerned in the battery (Pb for lead, Hg for mercury, and Cd for cadmium), Users of batteries and accumulators must not dispose of batteries and accumulators as unsorted municipal waste, but use the collection framework available to customers for the return recycling, and treatment of batteries and accumulators. Customer participation is important to minimize any potential effects of batteries and accumulators on the environment and human health due to the potential presence of hazardous substances, for proper collection and treatment go to:  
<http://www.lenovo.com/recycling>

## Restriction of Hazardous Substances Directive (RoHS)

### Turkish

The Lenovo product meets the requirements of the Republic of Turkey Directive on the Restriction of the Use of Certain Hazardous Substances in Waste Electrical and Electronic Equipment (WEEE).

Türkiye AEEE Yönetmeliğine Uygunluk Beyanı Bu Lenovo ürünü, T.C. Çevre ve Orman Bakanlığı'nın 'Atık Elektrikli ve Elektronik Eşya Bazı Zararlı Maddelerin Kullanımının Sınırlanması Dair Yönetmelik (AEEE)' direktiflerine uygundur. AEEE Yönetmeliğine Uygundur.

### Ukraine

Цим підтверджуємо, що продукція Ленововідповідно є вимогам нормативних актів України, які обмежують вміст небезпечних речовин

### India

RoHS compliant as per E-Waste (Management & Handling) Rules, 2011

## Vietnam

Lenovo products sold in Vietnam, on or after September 23, 2011, meet the requirements of the Vietnam Circular 30/2011/TT-BCT ("Vietnam RoHS").

## European Union

Lenovo products sold in the European Union, on or after 3 January 2013 meet the requirements of Directive 2011/65/EU on the restriction of the use of certain hazardous substances in electrical and electronic equipment ("RoHS recast" or "RoHS 2").

For more information about Lenovo progress on RoHS, go to:

[http://www.lenovo.com/social\\_responsibility/us/en/RoHS\\_Communication.pdf](http://www.lenovo.com/social_responsibility/us/en/RoHS_Communication.pdf)

## FCC Statement

This equipment has been tested and found to comply with the limits for a Class B digital device, pursuant to part 15 of the FCC Rules. These limits are designed to provide reasonable protection against harmful interference in a residential installation. This equipment generates uses and can radiate radio frequency energy and, if not installed and used in

accordance with the instructions, may cause harmful interference to radio communications. However, there is no guarantee that interference will not occur in a particular installation. If this equipment does cause harmful interference to radio or television reception, which can be determined by turning the equipment off and on, the user is encouraged to try to correct the interference by one or more of the following measures:

- Reorient or relocate the receiving antenna.
- Increase the separation between the equipment and receiver.
- Connect the equipment into an outlet on a circuit different from that to which the receiver is connected.
- Consult the dealer or an experienced radio/TV technician for help.

This device complies with part 15 of the FCC Rules. Operation is subject to the following two conditions:

(1) This device may not cause harmful interference, and (2) this device must accept any interference received, including interference that may cause undesired operation.

Changes or modifications not expressly approved by the party responsible for compliance could void the user's authority to operate the equipment.

Manufactured, distributed, or sold by Beijing Kangshuo Information Technology Co. , Ltd official licensee for this product. LENOVO and the Stylized LENOVO Logo are trademarks or registered trademarks of Lenovo ( Beijing ) Ltd.

All other trademarks are the property of their respective owners.

## Service and Support Information

The following information describes the technical support that is available for your product, during the warranty period or throughout the life of your product. Refer to the Lenovo Limited Warranty for a full explanation of Lenovo warranty terms. See “Lenovo Limited Warranty notice” later in this document for details on accessing the full warranty.

### What this Warranty Covers

Lenovo warrants that each Lenovo hardware product that you purchase is free from defects in materials and workmanship under normal use during the warranty period. The warranty period for the product starts on the original date of purchase as shown on your sales receipt or invoice or as may be otherwise specified by Lenovo. The warranty period and type of warranty service that apply to your product are

as specified in “Warranty service information” below. This warranty only applies to products in the country or region of purchase.

This warranty is your exclusive warranty and replaces all other warranties or conditions, express or implied, including, but not limited to, any implied warranties or conditions of merchantability or fitness for a particular purpose. As some states or jurisdictions do not allow the exclusion of express or implied warranties, the above exclusion may not apply to you. In that event, such warranties apply only to the extent and for such duration as required by law and are limited in duration to the warranty period. As some states or jurisdictions do not allow limitations on the duration of an implied warranty, the above limitation on duration may not apply to you.

## How to Obtain Warranty Service

If the product does not function as warranted during the warranty period, you may obtain warranty service by contacting your Lenovo dealer where it was purchased.

Product Type: Accessory

Warranty Period
12 Months

After-sales service email: [service@kang-shuo.com](mailto:service@kang-shuo.com)

Reduce | Reuse | Recycle



Printed in China