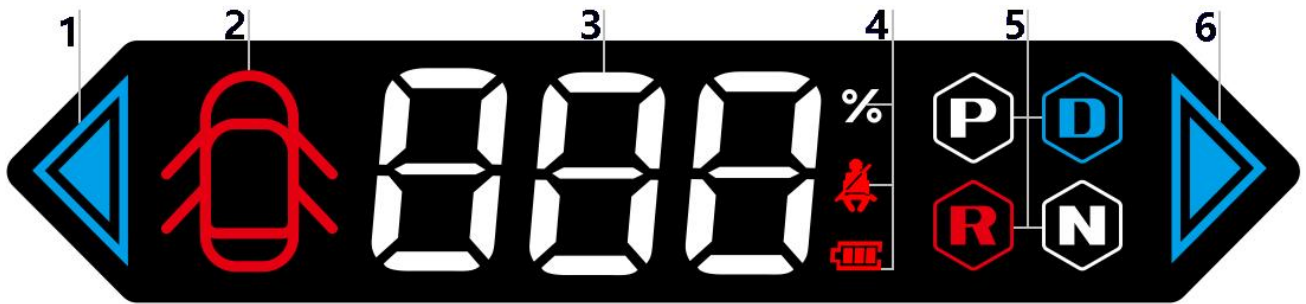


MODEL3/MODEL Y T5

(T5 has registered appearance patent and copyright of display screen)

Interface descriptions:



1. Left turn signal
2. Door icon
3. Vehicle Speed (When the speed is 0, will display the remaining battery)
4. Remaining battery icon/ Seat belt icon/ Low battery icon (From top to bottom)
5. Gear display
6. Right turn signal

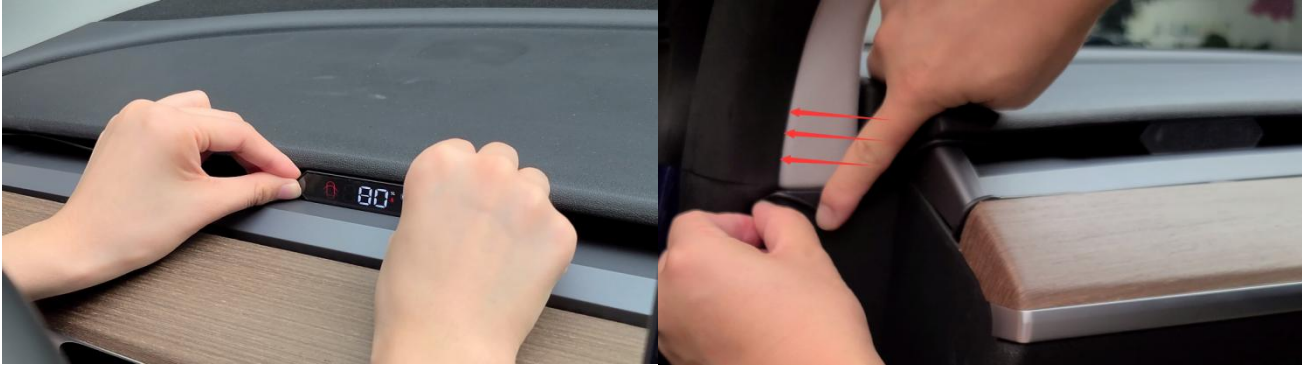
FAQ:

There's no data is displayed on T5.

- 1》 Please Check if the car key or card is placed in the induction area.
- 2》 Please sit in the driving position and lightly apply the brakes.

Easy to install

1. Put T5 in the proper position in the air outlet of air conditioner, and hide the wire in the gap



2. Open the cover under the armrest box, and unplug the original car



3. Insert the wire pair into the original vehicle plug, and then hide the wire under the foot pad.

