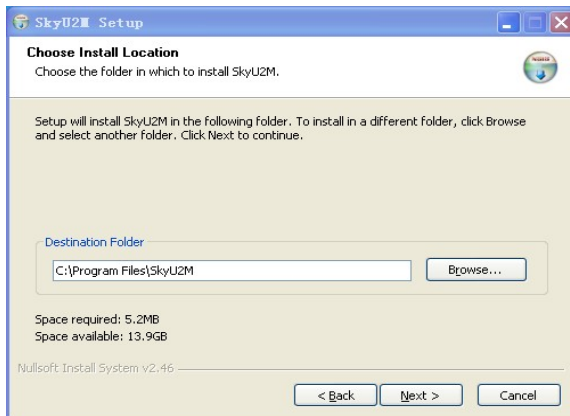


# Instruction



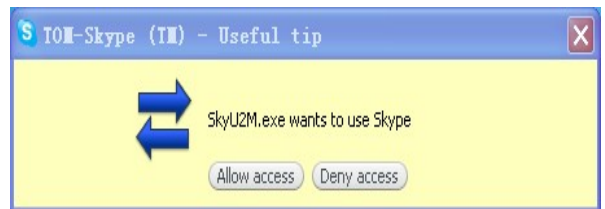
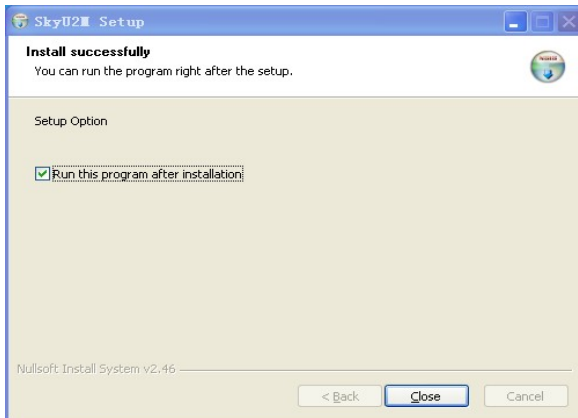
1.Double-click the icon

1. 双击图标



2.Please follow the instructions of the wizard to complete the installation process.Running

2. 开始安装，请按步骤完成安装过程。



3.Close the instaling windowl and run this program,a window "SkyU2M.exe wants to use Skype" will pop-up,then select "Allow access".

3. 完成关闭安装窗口，运行这个程序，这时弹出一个窗口“SkyU2M.exe 想使用 skype”点击“允许访问”

4.The usb skype phone will be standby after the program running.

4. 运行这个驱动后，usb skype电话才能正常连接使用

# Clearing of fault 故障排除

If the usb skype phone is not available after the program running, and turn to an icon of the picture on the right. Then please follow the instructions of the wizard to solve the problem.



当你运行驱动后不能使用usb skype 电话，而且出现右图图标时。  
请按以下步骤解决

