

# PSTN Home Security Alarm System User Manual



*Please read this user manual carefully before installing the system, and keep it well for future reference.*

## **Preface**

Thanks for using our wireless smart security home alarm system. This system will provide full protection in 24hours all through the year for your house and property.

The wireless alarm system adopts the advanced Israel digital security technology. It is of high reliability and low false alarm rate. Though the design is simple, the function of the system is very strong. It includes the functions of anti-fire, anti-burglar, anti-gas, anti-intrusion, and SOS Emergency etc. The wireless detectors which can pair with the system have the humanized functions of anti-interference, avoiding the false alarm etc. The alarm systems have been used widely in home, shop, financial office, villa, and apartment etc.

To ensure your safety and the proper using of the system, please read the user manual carefully before the installation. If in the process of installing or operating, you encounter any problems , please contact the local distributor or authorized technology service center for consult. You can also call the after- sale service phone numbers of our company. Our professional engineer will help to solve your problems.

## Content

<b>1. Function Profile</b> -----	3	7.16 PSTN Cable Fault Detect -----	13
<b>2. Introduction of the Alarm Host</b> -----	4	7.17 Low battery and Door Status Alert -----	13
<b>3. Process of Booting</b> -----	5	7.18 Adjust the Volume of Voice Prompt-----	13
<b>4. Daily operation</b> -----	6	7.19 Siren Tone when Arm/Disarm -----	13
4.1 System Arm-----	6	7.20 Set the Ring Times of the Line Telephone -----	13
4.2 System Disarm-----	6	7.21 Change the System Language-----	14
4.3 Home Arm -----	7	7.22 Change the Password -----	14
4.4 SOS -----	7	7.23 Restore Factory Default -----	14
<b>5. Answer the Alarm Call</b> -----	8	7.24 Recover the Password-----	14
<b>6. Remote Control by Phone Call</b> -----	8	7.25 Set the Time of Elder Zone -----	14
<b>7. System Setting</b> -----	9	7.26 Set the Alarm Delay Time -----	15
7.1 Add the Remote Controller -----	9	7.27 Program the Defense Zones-----	15
7.2 Record the Remote Controller-----	9	<b>8. Monitor Center Network Setup</b> -----	16
7.3 Delete the Remote Controller-----	9	8.1 User Code Setup-----	16
7.4 Add the Wireless Detector-----	10	8.2 Monitor Center Numbers Setup-----	16
7.5 Record the Position of Detector -----	10	8.3 Alarming Notification to the Monitor Center -----	16
7.6 Delete the Wireless Detector-----	10	8.4 Arm/Disarm Notification to the Monitor Center -----	16
7.7 Record the Installation Position of the Host-----	10	8.5 CID Defense Zone Code Setup -----	17
7.8 Add the Wireless Siren /Other Equipments-----	11	<b>9.The Installation of the Detectors</b> -----	18
7.9 Set the Alarm Phone Number-----	11	9.1 Magnetic Door Detector Installation Diagram -----	18
7.10 Delete the Alarm Phone number-----	11	9.2 PIR motion detector Installation Diagram -----	19
7.11 Set the Delay Arm time-----	12	<b>10. Maintenance</b> -----	20
7.12 Enable Delay Arm of Remote controller-----	12	10.1 System inspection-----	20
7.13 Set the Duration Time of Wired Siren-----	12	10.2 Cautions-----	20
7.14 Siren on/off Setup when SOS from Remote Controller--	12	<b>11. Technical Parameters</b> -----	21
7.15 Power Failure Alert-----	12	<b>12. Common malfunction</b> -----	22

## 1. Function Profile

- Support maximum 50 wireless defense zones.
- Support maximum 8 remote controller.
- Can record the voice for the remote controller and defense zones.
- Detectors' low voltage notification.
- Door/window status alert.
- Be Compatible to ADEMCO Contact ID protocol.
- Voice prompt for all the operations.
- Can preset 6 groups of alarming phone numbers. It will call the preset phone numbers automatically to send the alarm information.
- Message record for 10 seconds.
- Support wireless siren and other wireless equipment( 315Mzh, Customized for other frequency).
- Away arm, home arm, remote arm, and remote telephone arm.
- Arm, disarm, and monitor remotely
- Defense zones are programmable.
- Wireless study and coding, easy to add the new accessories.
- Built-in 4.2V Lithium battery provides electricity if the AC power is off.
- AC Power Failure Notification.

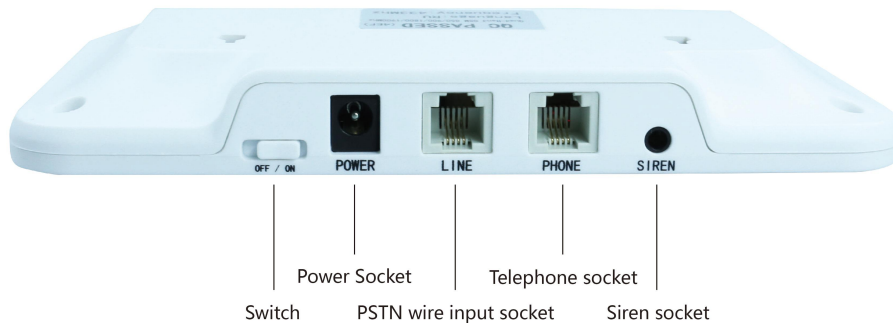
## 2. Introduction of the Alarm Host

The alarm host should be installed in the center of the detectors to ensure receiving the strong RF signals from all the detectors. The alarm host should be installed far away from the huge metal objects, fireproof doors, reinforced concrete walls, or any other electricity equipment that will cause high frequency interference.

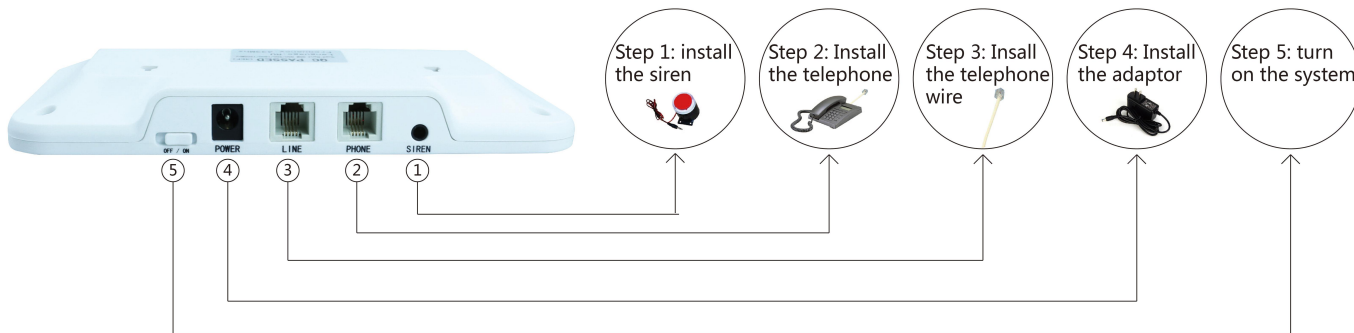
### Host Diagram:



**Host Sockets:**



**3.Process of Booting:**

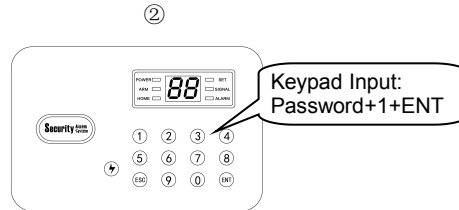
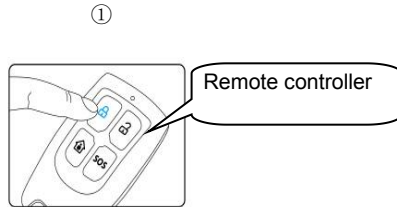


## 4. Daily Operation

### 4.1 System Arm

In the status of arm, the ARM indicator light is on, and the screen shows "BF". If any sensor is triggered, it will start to alarm.

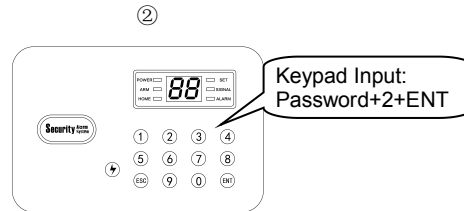
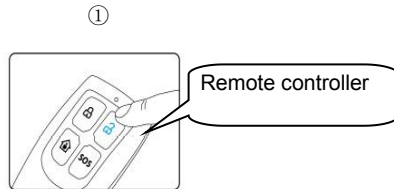
There are three ways to arm the system:



### 4.2 System Disarm

In the status of disarm, the arm indicator light is off, and the screen shows "CF".

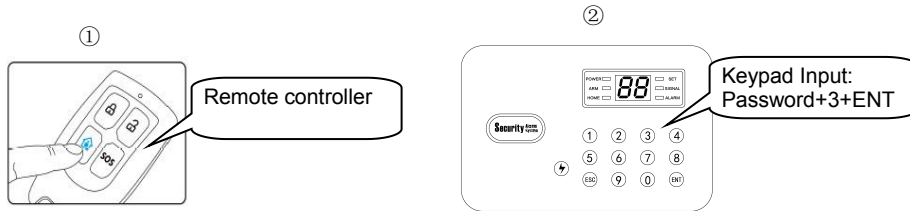
There are three ways to disarm the system:



### 4.3 Home Arm

In the status of home arm, the HOME arm indicator light is on, and the screen shows "LF".

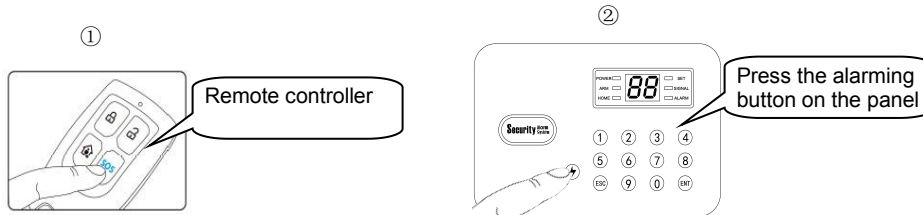
There are two ways to start the home arm:



### 4.4 SOS

In emergency, press the SOS button on the remote controller, the system host will start to alarm and call the preset phone numbers automatically for help.

There are two ways to start the SOS Emergency:





## **5. Answer the Alarm Call**

The host will call the preset phone numbers in sequence if alarm occurs. The record of the alarm information will be played automatically when the users receive the alarm phone call. At the same time, the user can control the alarm host remotely by operating on the keypad of the mobile phone:

Press **【1】** : stop the alarming, and arm the system again; the host will not make alarm phone call any more.

Press **【2】** : stop the alarming, and disarm the system; the host will not make alarm phone call any more.

Press **【3】** : stop the alarming, and monitor the alarm scene for 30 seconds. Press 3 again to monitor for another 30s.

Press **【5\*】** , **【5#】** , **【6\*】** , **【6#】** , **【7\*】** , **【7#】** , **【8\*】** , **【8#】**: transmit 8 groups of the wireless control signal.

Press **【9】** to make the siren beep ; Press **【0】** to shut off the siren.

Press **【\*】** to read the alarming information.

**Notice:** If the user receiving the alarm call only hears the alarm voice, and then hand off the phone without any operation remotely after receiving the alarm phone call, the host will continue to make phone calls to the next pre-set phone numbers until someone receives the alarming call and operate the host as above. If no one answers the alarming call, the host will call all the preset phone numbers circularly for three times.

## **6. Remote Control by Phone Call**

Call the phone numbers of the alarm host, the voice prompts "please input password" after the host receives the phone call. The voice prompts " please input instruction" after the users input the right password. (The default password is 1234. Please use the new password if you has changed it.)

Press **【1】** : arm the system;

Press **【2】** : to disarm the system;

Press **【3】** : monitor the alarm scene for 30 seconds, and press 3 again to monitor for another 30 seconds;

Press **【5\*】** , **【5#】** , **【6\*】** , **【6#】** , **【7\*】** , **【7#】** , **【8\*】** , **【8#】** : transmit 8 groups of the wireless control signal;

Press **【9】** : make the siren beep; Press **【0】** : shut off the siren.

## 7. System Setting

- ★ All the setting should be operated in the status of DISARM.
- ★ All the settings could be operated after inputting the correct password . The factory default password is 1234. If you change the password, please use the new password.
- ★ System Instruction format: **【ENT】 + 【password】 + 【address code】 + 【instruction】 + 【ENT】**  
**【ENT】 + 【password】** : to enter the setup status. If don't exit the setup status, you can make other setting without inputting **【ENT】 + 【password】**
- ★ Press **【ESC】** to exit the setup status

NO.	Operation	Function	Operation Procedure	Standard Instruction
7.1	Add the remote controller	The remote controller can control the alarm system after being paired with the alarm system.	Can add 8 remote controllers at maximum, <b>Code:</b> <b>【20】 + 【1~8】</b> , 1~8 is the series number of remote controllers. <b>E.g.</b> Add the third remote controller: <b>Operation:</b> input 20+3+ENT, press any key on the remote controller to send the pairing code, the voice will prompt "remote control 3 adding completed"	<b>【ENT】+【password】+【20】+【1~8】+【ENT】</b>
7.2	Record the remote controller	The user will know who keep the remote controller after recording the remote controller. Each remote controller can be recorded for 3s.	<b>Address Code: 91</b> Record the voice: 91+ (1~8) +1+ENT Delete the record: 91+ (1~8) +2+ENT Play the record : 91+ (1~8) +3+ENT 1~8 is the serial number of remote controllers	Record the voice: <b>【ENT】+【password】+【91】 + 【1~8】 + 【1】 + 【ENT】</b> Delete the record: <b>【ENT】 + 【password】 + 【91】 + 【1~8】 + 【2】 + 【ENT】</b> Play the record: <b>【ENT】 + 【password】 + 【91】 + 【1~8】 + 【3】 + 【ENT】</b>
7.3	Delete the Remote controller	Delete the missing remote controllers to reduce the risk of illegal operation.	<b>Address Code:</b> 21+ (1~8) ,1~8 is the sequence of remote controllers. <b>E.g.</b> delete the third remote controller: <b>Operation:</b> 21+3+ENT, Host will give notice if deleting successfully	<b>【ENT】+【password】+【21】+【1~8】+ 【ENT】</b>

NO.	Operation	Function	Operation Procedure	Standard Instruction
7.4	Add the wireless detector	The host can receive the alarm signal only after pairing with the detectors including PIR motions detector, door detector, smoke detector, gas detector, SOS button etc.	Add 50 wireless detectors by maximum, <b>Address code:</b> 23+ (01~50) ,01~50 is the sequence of 50pcs wireless detectors. <b>E.g.:</b> Add the third detector. <b>Operation:</b> 23+03+ENT, trigger the detector to send signal, Host will give notice if adding successfully	<b>【ENT】 + 【password】 + 【23】 + 【01~50】 + 【ENT】</b>
7.5	Record the position of detector	The user will know the alarm information if they record the defense zones. Each defense zone can record 3s.	<b>Address Code:</b> 92 ·Voice Record 92+ (01~50) +1+ENT ·Delete 92+ (01~50) +2+ENT ·Play 92+ (01~50) +3+ENT 01~50 is the sequence of 50pcs wireless detectors <b>E.g.:</b> Detector 3 voice record, delete, play. <b>Operation:</b> Voice record 92+03+1+ENT Delete 2+03+2+ENT Play 92+03+3+ENT	Record the voice: <b>【ENT】+【password】+【92】 + 【01~50】 + 【1】 + 【ENT】</b>  Delete the record: <b>【ENT】 + 【password】 + 【92】 + 【01~50】 + 【2】 + 【ENT】</b>  Play the record: <b>【ENT】+【password】+【92】 + 【01~50】 + 【3】 + 【ENT】</b>
7.6	Delete the wireless detector	If the detector is deleted , the host will not receive the signal from it.	<b>Address Code:</b> 24+ (01~50) ,01~50 is the sequence of 50pcs wireless detectors <b>Ex:</b> delete the third detector. <b>Operation:</b> 24+03+ENT, Host will give notice if adding successfully	<b>【ENT】 + 【password】 + 【24】 + 【01~50】 + 【ENT】</b>
7.7	Record the installing position of the host	The user will know the alarm address fast after receiving the alarm phone calls. The user can record 9s.	<b>Address Code:</b> 9200 ·Address voice record: 9200+1+ENT ·Voice delete: 9200+2+ENT ·Voice play: 9200+3+ENT	Record the voice: <b>【ENT】 + 【password】 + 【9200】 + 【1】 + 【ENT】</b> Delete the record: <b>【ENT】 + 【password】 + 【9200】 + 【2】 + 【ENT】</b> Play the record: <b>【ENT】 + 【password】 + 【9200】 + 【3】 + 【ENT】</b>

NO.	Operation	Function	Operation Procedure	Standard Instruction
7.8	Add the wireless siren or other equipments	(1), Open the transmitting function of the host, then host will transmit the wireless control signal.	Open/Close Signal sending, <b>Address Code: 41</b> ·Open 41+1+ENT ·Close 41+0+ENT	Open: 【ENT】 + 【password】 + 【41】 + 【1】 + 【ENT】 Close: 【ENT】 + 【password】 + 【41】 + 【0】 + 【ENT】
		(2), Encrypt the RF signal, to avoid the interference.	<b>Address Code: 43</b> <b>Operation: 43+XXXX(4 digital) +ENT</b>	【ENT】 + 【password】 + 【43】 + 【XXXX】 + 【ENT】
		(3) Pair the host with wireless siren	Press the Set Button on the wireless siren to active the pairing mode firstly, then press Arm/Disarm/Home/SOS of the alarm Host or remote controller to send the pairing signal; the siren will sound " Di " once if pairing successfully. (Different wireless siren maybe vary, please refer to its user manual)	
		(4) Pair the host with other wireless equipment	Set the RF device to the pairing mode firstly, and send pairing signal from alarm host or remote control: Host Keypad Input: 5+SEC, or E+ENT, 6+ESC, or 6+ENT, or 7+ESC, or 7+ENT, or 8+ESC, or 8+ENT Remote Telephone Input: 5*, or 5#, or 6*, or 6#, 7*, 7#, or 8*, or 8#	
7.9	Set the alarm phone number	The host will call the preset alarm phone numbers when alarm occurs.	Can pre-set 6 groups of numbers, <b>Address code: 51、52、53、54、55、56</b> <b>E.g.:</b> Set first group number as 13811111111 <b>Operation: 51+13811111111+ENT</b>	【ENT】+【password】 +【51~56】+ 【number】 + 【ENT】
7.10	Delete the alarm phone number	Delete the number the system will call when triggered	<b>Address code: 51、52、53、54、55、56</b> <b>E.g.:</b> Delete the Group 1 telephone number <b>Operation: 51+ENT</b>	【ENT】 + 【password】 + 【51~56】 + 【ENT】

NO.	Operation	Function	Operation Procedure	Standard Instruction
7.11	Set the delay arm time	Allow the users leave the house without triggering the Alarming, 60 seconds defaulted (Only for Host)	<b>Address code:</b> 44, delay range: 1~180s <b>E.g.</b> Set the delay ARM time as 30s. <b>Operation:</b> 44+30+ENT	<b>【ENT】+【password】+【44】+【001~180】+【ENT】</b>
7.12	Enable delay arm of remote controller	Set delaying ARM duration time to allow the users leave the house without triggering the Alarm	<b>Address code:</b> 47+0 close delay 47+1 open delay <b>Operation:</b> 47+1+ENT	<b>【ENT】+【password】+【47】+【0/1】+【ENT】</b>
7.13	Set the duration time of wired siren	Adjust the siren sounding time when the alarm is triggered	<b>Address code:</b> 46 <b>E.g.:</b> set the siren sounding time as 60 seconds <b>Operation:</b> 46+060+ENT (Maximum 180 seconds)	<b>【ENT】+【password】+【46】+【001~180】+【ENT】</b>
7.14	Siren on/off setup when SOS from remote controller	When the user press the SOS button on the remote controller, the factory default is that the siren will not beep.	<b>Address code:</b> 76+0, Close SOS Siren 76+1, Open SOS Siren	<b>【ENT】+【password】+【76】+【0/1】+【ENT】</b>
7.15	Power failure alert	The Alarm system will notice users by telephone call if the AC power is off, this function is closed in default	<b>Address code:</b> 80+0 Close the notification 80+1 Open the notification System only notice users if power failure in the ARM mode	<b>【ENT】+【password】+【80】+【0/1】+【ENT】</b>

NO.	Operation	Function	Operation Procedure	Standard Instruction
7.16	PSTN cable fault detect	The Alarm Host will keep warning if the telephone wire network has problem; this function is closed defaulted	<b>Address code:</b> 81+0, close the wire testing and warn 81+1, start the wire testing and warn	【ENT】+【password】+【81】+【0/1】+【ENT】
7.17	Low battery and door status alert	User can't ARM the system by remote controllers if any door is open, the alarm will notice which door is open. User could compulsively ARM the system from Alarm Host or telephone. The Alarm Host will warn which detector is in low voltage.	<b>Address code:</b> 82+0, close the inspection and notification 82+1, open the inspection and notification  The Alarm system should adopt two-way door sensors, and it is not suggested to ARM the system compulsively if any door or window is open to avoid he false alarming	【ENT】+【password】+【82】+【0/1】+ENT】
7.18	Adjust the volume of voice prompt	Increase or decrease the volume of the voice prompt. Factory default: Maximum	<b>Address code:</b> 83,(1~8 degree) 8 is the highest volume	【ENT】+【password】+【83】+【1~8】+【ENT】
7.19	Siren tone when Arm/Disarm	The Siren will Beep once when ARM, and beep twice when DISARM, this function is closed defaulted	<b>Address code:</b> 75+0, close the Beep notice 75+1, open the Beep Notice	【ENT】+【password】+【75】+【0/1】+【ENT】
7.20	Set the ring times of the line telephone	The alarm host will receive the phone call after the ring times pass the preset number. The factory default: 6 times	<b>Address code:</b> 72,1~9 times. <b>E.g.</b> set to ring 3 times <b>Operation:</b> 72+3+ENT	【ENT】+【password】+【72】+【1~9】+【ENT】

NO.	Operation	Function	Operation Procedure	Standard Instruction
7.21	Change the system language	The system has two languages for users to choose.	<b>Address code:</b> 86+0 language-A 86+1 language-B	<b>【ENT】+【password】+【86】+【0/1】+【ENT】</b>
7.22	Change the Password	Factory default password is1234. Change it to avoid illegal operation	<b>Address code:</b> 30+ XXXX (4-digital new password) +ENT E.g: revise the Password to 1012 Operation:30+1012+ENT Notice: the new password MUST be 4-digit	<b>【ENT】+【old password】+【30】+【XXXX】</b> <b>【new Password】+【ENT】</b>
7.23	Restore Factory Default	If the system is not stable, or the user forgets his setting, we suggest to restore the system to factory default	Keypad Input: 95175308246+ENT, the Host starts the formatting, and notice " restore factory setting complete" after finishing, it needs around 60 seconds.	<b>【95175308246】+【ENT】</b>
7.24	Recover the Password	Recover the password to factory default "1234"	Keypad Input: 95175308249+ENT, The Host will notice "recover to the factory default password complete "after finishing	<b>【95175308249】+【ENT】</b>
7.25	Set the time of elder zone	Special zones designed for the elders that need them to trigger the specific detectors in pre-set time to confirm if they are in normal condition; the alarming will be triggered if the elders don't trigger the specific detectors in the pre-set time	<b>Address code:</b> 88+ (01~48) +ENT,01~48 is hours. <b>E.g.</b> Require the elder to trigger the detector every 12 hours. <b>Operation:</b> 88+12+ENT. Needs to set the zone as Elder Zone in advance, refer to 7.27 "Zone Program"	<b>【ENT】+【password】+【88】+【01~48】</b> <b>+【ENT】</b>

NO.	Operation	Function	Operation Procedure	Standard Instruction
7.26	Set the alarm delay time	The user could enter the house and use the password to DISARM the system immediately without triggering the alarming	<p><b>Address code:</b> 45, delay time is available for 1~180 seconds</p> <p><b>E.g.</b> se the delay alarming time as 150 seconds</p> <p><b>Operation:</b> 45+150+ENT, Needs to set the zone as "Delay Alarming", refer to 7.27 " Zone Program)</p>	<p><b>【ENT】 + 【password】 + 【45】 + 【001~180】</b> <b>+ 【ENT】</b></p>
7.27	Program the defense zones	Could program the specific zone to have specific function and attributes	<p><b>Setting: 【60】 ⇒ 【AA】 ⇒ 【B】 ⇒ 【C】 ⇒ 【D】 ⇒ 【ENT】</b></p> <p><b>【AA】</b> : Zone Number; [01~50]</p> <p><b>【B】</b> : Zone type: [1] Arm valid zone, [2] Arm and home arm valid zone [3] 24 hours zone, [4] bypass zone, [5] Doorbell, [6] Elder zone, [7] Guest Zone.</p> <p><b>【C】</b> : Delay Alarming: [0] No delay, [1] Delay;</p> <p><b>【D】</b> : Siren Mode; [0] Silent, [1] Sound (Only to wired siren)</p> <p><b>E.g.</b> Set zone 12 as 24-hour zone, delay alarming, and the siren will work if triggered.</p> <p><b>【60】 ⇒ 【12】 ⇒ 【3】 ⇒ 【1】 ⇒ 【1】 ⇒ 【ENT】</b></p> <p><b>Doorbell Zone:</b> play music after being triggered;</p> <p><b>Guest Zone:</b> play Voice "Welcome" if being triggered in DISARM Mode, and become common zone in AMR Mode.</p>	



## **8. Monitor Center Network Setup**

### **8.1 User Code Setup**

In the status of setup, press address code【78】on the buttons of the host first, and then input four digital user code 【xxxx】, finally press 【ENT】to confirm.

The voice will prompt “ setting completed” if the setting is successful.

【78】+【xxxx】+【ENT】

### **8.2 Monitor Center Numbers Setup**

In the status of setup, press address code 【50】on the buttons of the host first, and then input twenty two digital user code 【xx...xx】, finally press 【ENT】to confirm. The voice will prompt “phone number setting completed” if the setting is successful.

【50】+【xx...xx】+【ENT】

### **8.3 Alarming Notification to the Monitor Center**

In the status of setup, press address code 【73】on the buttons of the host first, and then press【0/1】,finally press 【ENT】to confirm. The voice will prompt “ setting completed” if the setting is successful.

【73】+【0/1】+【ENT】

#### **Illustration:**

【0】 means the function is off, and the monitor center will not receive the alarming if any sensors is triggered.

【1】 means the function is on, and the monitor center will receive all the alarming if any sensors is triggered.

The factory default is off.

### **8.4 Arm/Disarm Notification to the Monitor Center**

In the status of setup, press address code 【74】on the buttons of the host first, and then press【0/1】,finally press 【ENT】to confirm. The voice will prompt “ setting completed” if the setting is successful.

【74】 + 【0/1】 + 【ENT】

**Illustration:**

【0】 means the function is off. The Arm/Disarm information will be not notified to the monitor center

【1】 means the function is on. The Arm/Disarm information will be notified to the monitor center

The factory default is off.

### 8.5 CID Defense Zone Code Setup

The defense zone code means the type of defense zones that the monitor center can distinguish.

For example: If you set the code of defense zone 3 into "110", when the alarm information be sent to the monitor center, the "fire alarm" will be shown on the CID monitor center.

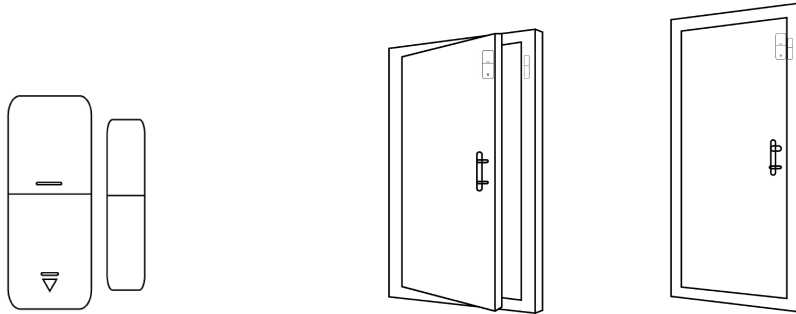
In the status of setup, press address code 【62】 on the buttons of the host first, and then press the defense zone number 【1~50】 , and then press the defense zone code 【xxx】 , finally press 【ENT】 to confirm. The voice will prompt " defense zone X setting completed" if the setting is successful.

**Common CID Zone Code**

Fire	Co	Poison Gas	Sickness	Burglar	High/Low temperature	Water Leakage	Indoor	Surrounding	Emergency
110	162	151	100	130	158/159	154	132	131	120

## 9. The Installstion of the Detectors

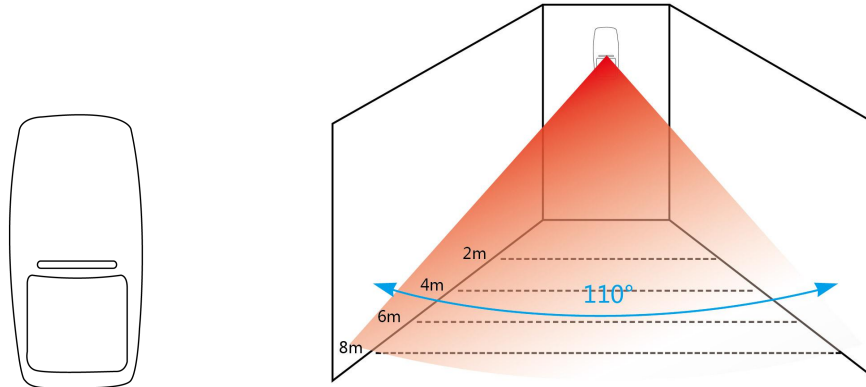
### 9.1 Magnetic Door Detector Installation Diagram:



#### **Cautions:**

- ①The gap between the magnet and the sensor should be less than 10mm;
- ②After the installation, if the indicate light of the detector is on when the door is opened, it proves it is installed successfully.
- ③If the indicate light of the door detector flashes when it is triggered, it means the battery of the sensor is in low voltage, and the user need to change the battery as soon as possible.
- ④The transmit distance of the detectors is less than 80meters in the open area. Please test the distance before installing. The obstacles will change the transmitting distance.

## 9.2 PIR Motion Detector Installing Diagram:



To avoid the false alarm, please pay attention to the following points in stalling the PIR motion detector:

- ① Do not face the glass door/window.
- ② Do not face the big object which is easy to swing.
- ③ Do not face the cold and heat air vent or cold and heat source.
- ④ The furniture, miniascape, or any other isolations should be away from the detecting scope.
- ⑤ Do not install 2 or more detectors in the same area or it will cause the interference when alarm;
- ⑥ When the detector is triggered and the LED indicator flash, it means the battery is in low voltage, please change it as soon as possible;
- ⑦ The detecting distance is less than 8meters, the transmitting distance is less than 80meters. Please test the distance after installing. The obstacles will influence the distance.

## 10. Maintenance

### 10.1 System Inspection

The system need the periodic inspection to ensure the stable and safe work. We suggest the users inspect the system per three months and inspect the detectors per month.

#### Alarm Host Inspection

10.11 Check whether the host can arm or disarm normally.

10.12 Check whether the host can call through the phone numbers when alarm occurs.

10.13 Check whether the host can receive the signals from detectors normally and the back-up battery is normal or not.

#### Detector Inspection

10.14 Trigger the detector by hand to check whether it can send the alarm signal successfully.

10.15 Check the battery of each detector to see whether it is short of voltage.

### 10.2 Cautions

10.21 Do not disassemble, repair, transform the product privately, or it will cause fault or accident.

10.22 Do not fall the product on the hard ground to avoid the fault or damage because of the strong crash.

10.23 Do not set " 911" or any other security departments' telephone numbers as the alarming phone numbers without any authorization

## 11. Technical Parameters

Power Input: DC 12V / 1A;

Standby current ≤55mA;

Alarming current ≤300mA;

Backup Battery: 4.2V 350mAH rechargeable Lithium battery,

Full charged time: 10 hours. Standby time: 6 hours;

Built-in Siren volume: 80DB;

Wired Siren volume: 120DB (The default beep time is 180s when alarm);

Alarm Host RF receiving frequency: 433MHz (±75KHz) ,PT2262 / 4.7MΩ EV1527/300K (Customized for 315Mhz);

Alarm Host RF transmitting frequency: 315MHz (±75KHz) ,PT2262 / 4.7MΩ EV1527/300K; (Customized for 433Mhz)

Supported alarming telephone numbers: 6 groups of alarm phone numbers, and 1 group of CID center alarm number;

Supported wireless accessories: 8 remote controllers, and 50 wireless detectors;

Distance between accessories and alarm Host: remote controllers <40 meters(in the open distance) , detectors<80 meters(in the open distance);

Factory default password: 1234

Working temperature: -10°C~+50°C

**12.Common Malfunction**

Malfunction	Possible Reasons
The host doesn't make phone call	<ul style="list-style-type: none"> <li>● System is disarmed</li> <li>● Set the wrong alarming telephone number.</li> <li>● Set the alarm delay</li> <li>● Telephone charges owed</li> <li>● Telephone line is broken</li> </ul>
Can't remote control	<ul style="list-style-type: none"> <li>● Wrong password</li> </ul>
Alarm host can't receive signal from accessories	<ul style="list-style-type: none"> <li>● The pairing is not successful</li> <li>● The accessories is defective</li> </ul>
Alarming is not delayed after setting the alarm delay	<ul style="list-style-type: none"> <li>● Zone is not programmed to alarm delay.</li> </ul>
No telephone call after AC power failure	<ul style="list-style-type: none"> <li>● System is not in the status of ARM</li> </ul>
Siren doesn't beep	<ul style="list-style-type: none"> <li>● Don't connect the power</li> <li>● Set the siren off when alarm</li> </ul>
Accessories can only be connected in short distance	<ul style="list-style-type: none"> <li>● Accessories is in low voltage</li> <li>● Alarm Host is in low voltage</li> <li>● Interference</li> </ul>

## Warranty Card

**Guest Name:** \_\_\_\_\_ **Purchase Date:** \_\_\_\_\_

**Telephone:** \_\_\_\_\_

**Address:** \_\_\_\_\_

**Warranty Duration:** \_\_\_\_\_

Date	Repair Record

Notice: We offer free replacement for defective products within 1 month since purchase date, 2 years warranty and life time maintenance for all products. (Additional spare part will be charged for artificial damage or irresistible damage of the products)