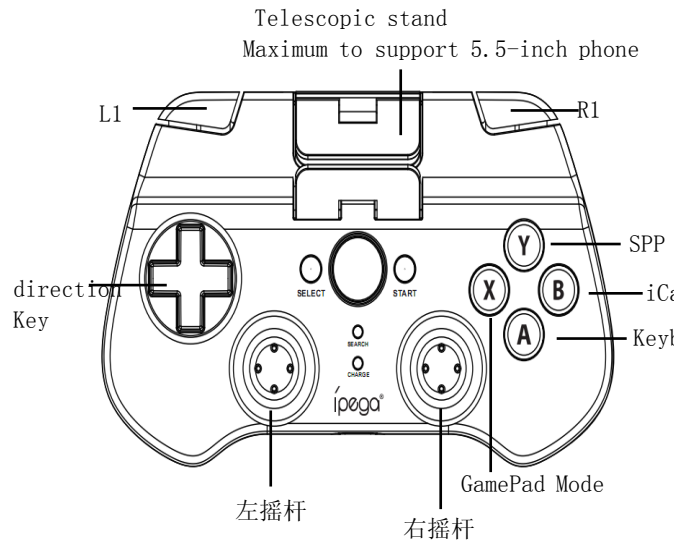


Product Modle: PG-9017S

Product Name: Bluetooth Controller



Introduction

This product is a new design wireless Bluetooth controller and support different android/ ios/ PC and etc gan

- 1.It can be used when connected with the Bluetooth mobile phone and without any drivers.
- 2.Exclusive gaming application platform, the classic hand travel under control (ipega game lobby only for And platform).
- 3.With 380 mAh built-in lithium battery, can be used around 20 hours continuously after fully charged, safe ;
4. With the telescopic stand, the phone can be put in the stand (maximum support for 5.5-inch mobile phon for playing games.
- 5.Bluetooth 3.0 wireless transmission can be 6-8 meters wide range of control from the operation.
- 6.User-friendly software designed to enter the power saving mode with no connection state.
- 7.Support android 3.2, ios 4.3 above system.
- 8.Compatible with iPod/iPhone/iPad as well as the vast majority of android tablet PCs.

Game Support Description:

Under Android system, it supports the vast majority of games and simulator games (such as MC 4, Wild blood Hunter, Zombie, FC simulator, GBA emulator, arcade emulator, SFC simulator, N 64 emulator, Shadowgun, So Cordy, soulcraft, Zenonia4, 9 Innings 2013, Riptide GP, etc.)

Download method of games that are compatible: Enter itunes and App Store to search for "iCade". The hand compatible with the vast majority of games, such as Gunman Clive, Helium Boy, League of Evil League of Evil Knight Free Stardash, Temple the Run and so on.

User Manual (操作说明)

X.GamePad Mode: Only Android 3.2 + versions supports this mode, when the handle turn-off, first press the "X" key, then press the HOME key, Bluetooth LED indicator flash, the handle enter into the pairing mode, turn-on the phone and search for Bluetooth devices "ipega gamepad controller" and pairing, if the pairing is successful, the LED indicator will be bright, the handle will be in the GamePad mode.

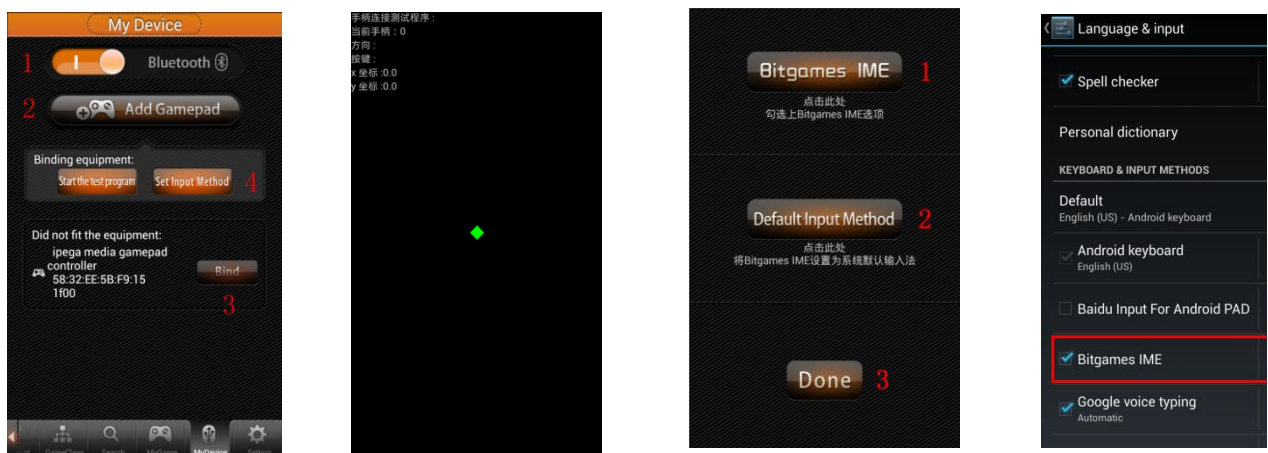
A.Keyboard Mode: (suitable for Android system)When the handle turn-off, first press the "A" key, then press the HOME key, the LED indicator flash, the handle enter into pairing mode, turn-on the phone and search for Bluetooth devices "ipega gamepad controller" and pairing, if the pairing is successful, the LED indicator will be bright, the handle will be in the keyboard mode.

B.iCade modes: (suitable for IOS system)When the handle turn-off, first press the "B" key, then press the HOME key, the LED indicator flash. the handle enter into the pairing mode. turn-in the phone and search for Bluetooth devices "ipega gamepad controller".

then, the handle enter into the pairing mode, turn on the phone and search for Bluetooth devices. Ipega gamepad controller, and pairing, if it is success, the LED light will be bright, the handle will be in the iCade mode.

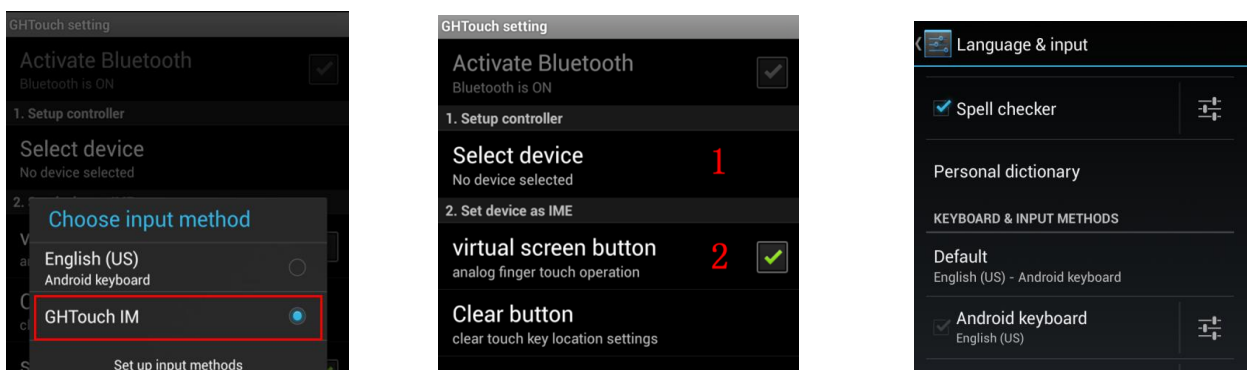
Download and use the ipega game lobby: (Suitable for Android system, pls log in official forum :<http://www.aipaige.co> or through the QR code to download ipega game lobby APK file)

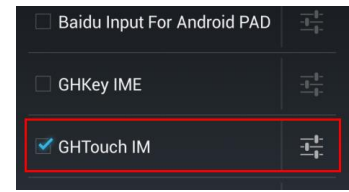
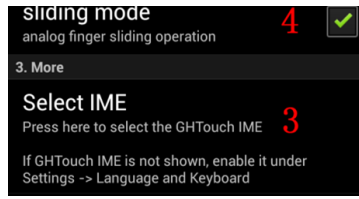
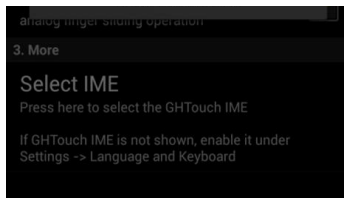
- 1 Switch on the application "ipega game lobby" and then click to enter my device (Fig. 1)
- 2 When the handle turn-off, first press the "Y" key, then press the HOME button, the LED indicator light flash, the handle into the pairing state
- 3 Switch-in the Bluetooth, click Add handle search → "ipega gamepad controller" → click interface to bind to jump to connection test program handles the connection is successful (Figures 1, 2)
- 4 Click Settings → Click Bitgames IME input method and check "Bitgames IME" → Select Input Method "Bitgames IME" → Finish (Figure 3,4)



Y. SPP Mode: (Suitable for Android system, need ROOT when using.) When the handle turn-off, first press the 'Y' key, then press the HOME button, the LED indicator is keeping bright, the handle is in the pairing mode; SPP mode requires corresponding Android APP software to complete the relevant key mapping function. SPP use (Please log in official forum <http://www.aipaige.com> or through QR code to download "GHTouch IM")

- 1 Go to Settings → Language and input → Select Input Method "GHTouch IM" (Figure 1)
- 2 Open the application "GHTouch" → Choose device "ipega gamepad controller" → check "virtual screen button" → Select Input Method "GHTouch IM" → The device will automatically connect with the handle, after the connection is completed, the LED indicator light flash (Figures 2, 3)
- 3 After entering the game, press the volume up on the device or handle "Select" button, the button icon or the screen corresponding to the position (Note: Double-click the icon to set the size), press return or click the device handle "Select", icon hidden, complete the setup.





About input method setting: Use the controller to play game should set the phone or notebook input method to be default as Eng language input (For the ios system, be sure to switch the input method, and then pairing, if not, the handle does not work properly)

Charging controller: Accessing the controller to 5V power supply for charging (PC device or mobile phone power adapter). Proces charging, the charge indicator of the handle is Orange and keep long bright, saturated power LED goes.

Switch on/off the controller: Press "HOME" button for 3 seconds until the Bluetooth LED is off, that shutdown is successful. If the phone is not unpair connection when controller shutdown. Just again
Press the "HOME" button for about five seconds, until the LED red light flashes slowly. It means that the handle is turned on (the default the last boot mode), the boot handle will automatically paired with the phone connection. If the connection fails, the hand will automatically shut down.

Connect the PC: Open the device's Bluetooth PC program, and select the "X, A" in either mode can be paired with (and does not have a Bluetooth PC devices need to use the Bluetooth receiver).

Note: To change the controller function mode, please turn off the controller firstly and cancel the bluetooth pairing, then in accordance with the operation mode to replace the code step.

Attention

1. When the controller can't operate normally, please use the paperclip to touch the reset switch on the left corner of the grip bar cannot shut down or crash.
2. Please do not put this product in wet or hot place for storage.
3. Do not hit, beat, piercing or attempt to disassemble the product to avoid unnecessary damage.
4. Do not discard the built-in battery with garbage.
5. Do not use near fire or other heat source to recharge the battery.

Mode

ade Mode

board Mode

左摇杆: left joystick
右摇杆: right joystick

mes.

droid

and stable.

e), easy

l, Dungeon
onic CD,

dle can be
2, Muffin

or

y, the Bluetooth LED indicator
nd

Bluetooth LED indicator
r"



the enter

handle

" → click



'Y" key, then press the HOME key, LED lights flash, the handle
the SPP
ction.

' APK file.):

uttons"

to
on

■
lish
y)
s of

lle

t

ck when the