

# 2.4GHz USB Digital Wireless Security Kit

## USER MANUAL



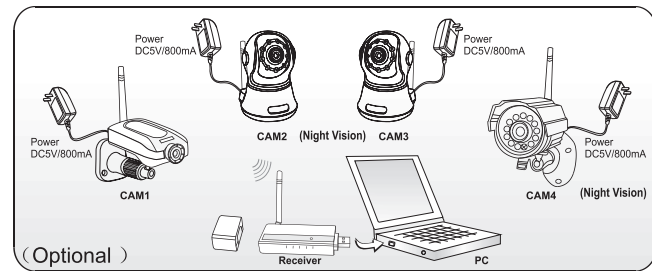
## Guides You into a Harmonious World




Any relevant alteration is subject to the latest real object !

### I . Introduction:

- Four channel available monitoring at the same time
- Audio & Video Recording, Image Capturing
- Network Remote Monitoring
- Video Clips Played by our software or any other Video Player
- USB2.0
- Support Date, Time, Week Stamps
- Intelligent Search




## II. Installation Software

1. Install " setup.exe " 
2. Plug in the USB receiver
3. Run program file

System configuration:

	Basic	Recommend
CPU	Pentium4 2.0 GHz	Pentium4 3.0 GHz or more
RAM	512 MB	1 GB or more
Resolution	800 x 600	1024 x 768
System	Windows 2000	Windows XP or Vista
Windows Media Player	Windows Media Player 9	Windows Media Player 9 or higher

## III. Software introduction



The screenshot displays a software interface for a 2.4G Digital Wireless Kit. It features a quad-view of four camera feeds: top-left shows a family looking at a laptop; top-right shows a person in a striped shirt carrying a bag; bottom-left shows a meeting in a conference room; bottom-right shows a house with a ladder on the roof. To the right of the feeds is a control panel with four numbered circles (1-4) and icons for Snapshot, Detect, Web Server, Setup, and Playback. At the bottom, a status bar shows the date (2010/06/15), time (17:10:03), and IP address (192.168.1.9). A taskbar at the very bottom contains various system icons.

Annotations for the control panel:

- Press this circle to see each channel on the full window (pointing to circles 1-4)
- take photo (pointing to Snapshot icon)
- recording (pointing to Detect icon)
- internet (pointing to Web Server icon)
- system setting (pointing to Setup icon)
- playback the recording file (pointing to Playback icon)

Annotations for the status bar and taskbar:

- Date (pointing to 2010/06/15)
- IP Address (pointing to 192.168.1.9)
- time (pointing to 17:10:03)
- status, stand by/detecting/taking photo (pointing to the left side of the status bar)
- Signal (pointing to the signal strength icon)
- match camera (pointing to the camera icon)
- folder of taking photo (pointing to the folder icon)
- adjust size of picture (pointing to the zoom icon)
- no use (pointing to the power icon)
- quad, show 4 channels at the same time (pointing to the quad-view)
- full window show one channel (pointing to the full window icon)

**System Settings**

System (selected) | Setting

Language Support  
Language: English

Storage Location  
Record: C:\Program Files\WirelessCamera ... Default  
Free disk space: 011005.96(MB), Total Space: 028654.97(MB)  
Snapshot: C:\Program Files\WirelessCamera ... Default  
Free disk space: 011005.96(MB), Total Space: 028654.97(MB)

Mail Server  
SMTP: [ ]  
E-mail: [ ]  
Account: [ ]  
Password: [ ] [Test]

Startup Options  
 Start Detecting  
 Start Web Server

Recurring Recording  
 Enable [10] Recuring Ratio (%)

Web Service  
IP Address: 192.168.1.9  
Web Server  
Port: 7788  
Account: user  
Password: [ ]  
MMS Server  
Port: 8080  
Channel: Disable  
Web Address: [enable] [30] [OK]  
MMS Address: [none] [OK]  
Web Address: (http://192.168.1.9:7788/download.htm) [OK]

Annotations:

- system basic setting (points to System tab)
- only english (points to Language dropdown)
- set mail server for mail alarm send you email once there is a motion detection (points to Mail Server fields)
- start these functions when start (points to Startup Options checkboxes)
- adjust the free space ratio, rewrite when the free space is lower than setting (points to Recurring Recording fields)
- setting recording storage location (points to Record field)
- setting taking photo storage location (points to Snapshot field)
- show your computer IP address auto (points to IP Address field)
- open this default port 7788 in your router, then when you visit this port of router from internet, you can see the picture (points to Web Server Port field)
- you can set password to protect your information (points to Password field)
- MMS port (points to MMS Server Port field)
- default is disable, but is it optional, when it is enable, you can type the MMS address to see the picture (points to MMS Address field)

**System Camera Settings**

System | Setting (selected)

Basic Settings | Image Adjust | Recording | Motion Detect | Alert Settings

Channel Name: [ ] Note: [ ]

Text Display

Channel Information  
 Channel Number  
 Channel Name

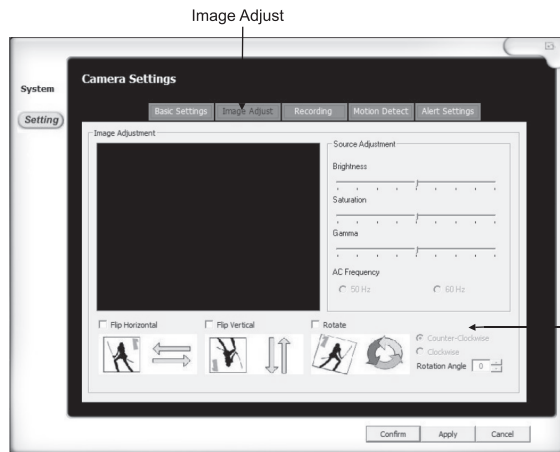
Date and Time  
 Date  
 Time  
 Week

Font Size: Medium  
Text Color: [ ]  
Background: [ ]  Transparent

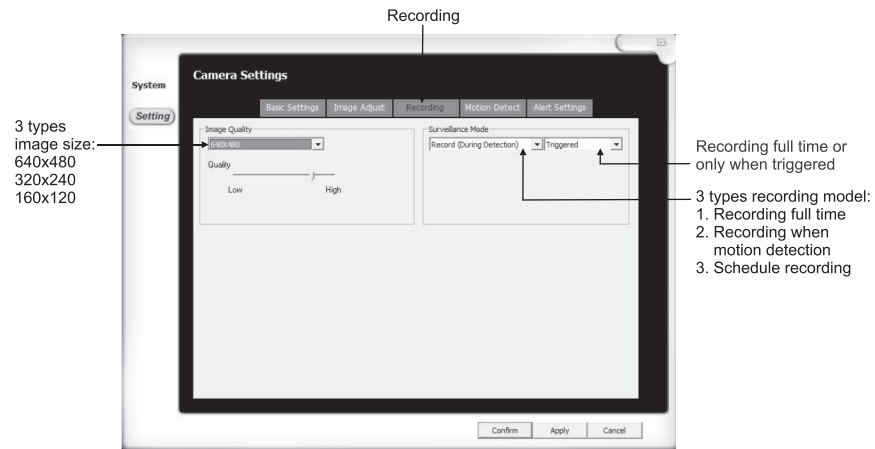
Watermark  
Path: [ ]  
Transparency: [ ]  
Preview: Transparent Opaque

Annotations:

- select setting Camera Setting (points to Setting tab)
- Show the words on the picture (points to Channel Information checkboxes)
- Show water mark on the picture (points to Watermark checkbox)



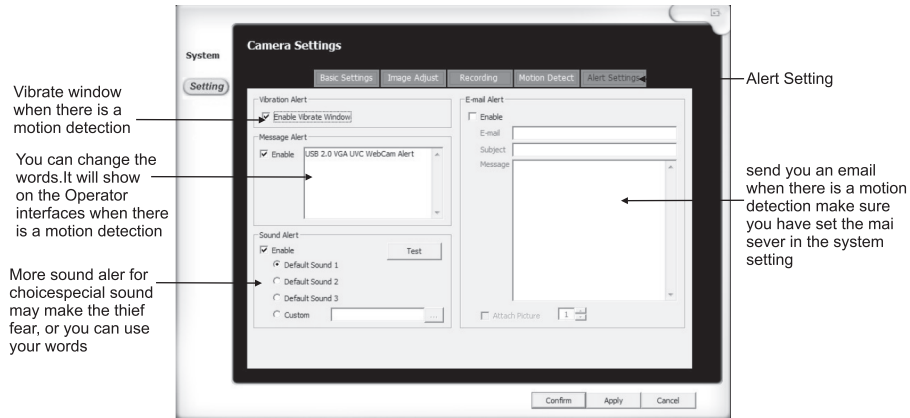
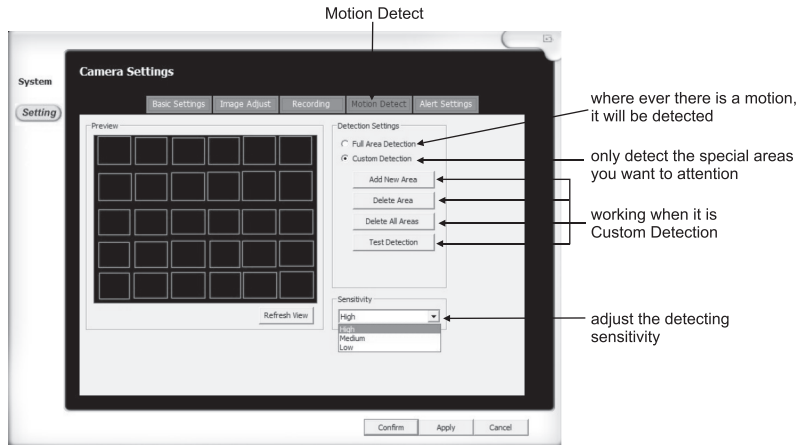
If the camera is not installed for good direction, adjust the picture easily by this way, no need to go to adjust the cameras



3 types image size:  
640x480  
320x240  
160x120

Recording full time or only when triggered

3 types recording model:  
1. Recording full time  
2. Recording when motion detection  
3. Schedule recording



Install the software before plug in the USB receiver

How to match the camera to the receiver?

Press the "code" button when the light is flashing, choose the camera channel you want on the software operator window

### IV. FAQ:

Q: Can not find the device after installed software.

A: After you installed the software, when you plug in the USB receiver, it shows found unknown new device, please update the drive from device manager or you can do according the guider.

Q: How to set network function?

A: Setting network, when you press web server, you can see IP address, and port 7788, please also open this port in your router, then when you visit your router IP address:7788, you can see the pictures, e.g.: if your router IP address is 202.96.134.33, then you should visit <http://202.96.134.33:7788>

Q: Why can not we use some functions or buttons?

A: Some functions only work when it is one-channel view, and you should be out "detecting" .

Q: Why can not we go to set and playback?

A: Please leave "detecting".

Q: Why can not we use remote control ( PTZ)?

A: It only works when it is one-channel view, and your cameras do not support this function.

Q: Does it support DDNS?

A: Yes, it supports DDNS, and you can also visit by the ip address or DNS address.

Q: Why does it not recording after press "detecting"?

A: Please check the recording setting, if it is recording all the time, it should work, but if this recording by motion detection, it will only work when there is a motion.

Q: Why can not see remote view?

A: Please check the network setting and IP address.

Q: What is the meaning of "Can not connect to following channel(s)"?

A: Please check the connect status.

Q: What is the meaning of "Can not import to the following channel"?

A: Please check the IP address, maybe your IP address is the same as some other computer.

Q: What is the meaning of "No buffer space error"?

A: The space of hard drive is not enough.

Q: What is the meaning of "Virtual RAM insufficient"?

A: Please up your RAM to be 1G.

## 2.4G Digital Wireless Kit

Q: Why no sound when play video?

A: If the video is 4CH quad picture, there is no sound, only when it is one channel and single picture, there is sound.

**Note:** Please make the Stereo Mix (volume recording setting) is on when you record.

### V. What is in the box?

Receiver .....	1PC
Camera .....	1PC (Optional)
Stand of the camera .....	(Optional)
Antenna .....	2PCS (Optional)
Power adapter (5V/800mA) .....	1PC (Optional)
Driver CD .....	1PC
User Manual .....	1PC



## Warranty card

This card is the important evidence to receive our service, please keep it well.

- ① When used normally, the following services can be offered:
  - A. Replacement for functional disorder within 3 months.
  - B. Repair free of charge for functional disorder within 1 year.
  - C. Service for all the life( only charge material cost and freight if the warranty date expires.)
- ② The following conditions are excluded for warranty service ( repairable if needed, but will charge material cost and freight.)
  - A. Malfunctions or damages by mistaken installation or using the products exceeding the limited operating conditions.
  - B. Malfunctions or damages by self disassembled or repair and any other misuse.
  - C. Spare parts missed, artificial damages
  - D. Unmatched products.
- ③ Repair cycle Excluding the shipping dates, the Quality Department will submit the examine report in one day on receipt of the products, the products on the quantity under 50sets will be repaired in 3 days after customers signed back the test report.

**Product name:** \_\_\_\_\_ **Purchase date:** \_\_\_\_\_

**User's name:** \_\_\_\_\_ **Invoice No.:** \_\_\_\_\_

**User's address:** \_\_\_\_\_ **Distributor:** \_\_\_\_\_

**Tel:** \_\_\_\_\_ **Contact person:** \_\_\_\_\_

**Zip code:** \_\_\_\_\_ **Tel:** \_\_\_\_\_

**Dealer:( Valid by sealed)**