

S04-600X Digital Microscope User Manual

Prepared by Coolingtech Engineering Dept.

2011.10.1

Thank you for Purchasing our S04-600X Digital Microscope, it is a slim type tool and can be easily used in different fields including

1. Textile industrial for textile inspection
2. Printing inspection
3. Industrial inspection: PCB, Precision machinery...
4. Educational purpose
5. Hair examination
6. Skin examination
7. Microbiological observation
8. Jewelry & coin (Collections) inspection
9. Visual Assistance
10. Others

Digital Microscope(S04-600X) must be connected to the computer ,User interface is very friendly and you can do the Measure work easily.

You can find more information of the product on this manual.

CONTENTS

Introduction	2
Parts of Microscope	3
Specification	3
Notes before use	4
Product Outlook & Standard parts	3
Hardware and system requirements	5
How to install the Driver software	5
How to install the measurement software	17
Function options	21
How to do the calibration	25

Parts of Microscope



- ① LED Light ② Lens ③ Magnification 25X~600X ④ Focus Roller
⑤ SNAP & Zoom Switch ⑥ Body ⑦ USB Line

Specification

Image CMOS Sensor

Controller High Speed DSP (Driver Free available)

Focus Range 0mm ~ 40mm

Snap Shot Software and Hardware

Video Capture Resolution 1.3M.

Built-in 8 White-light LED and adjustable illumination ensure the magnified images are clear and bright

Still Image Capture Resolution 1280*960, 1600*1200, 800*600, 640*480,
320*240

Frame Rate 30 f/s under 600 LUX Brightness

Digital Zoom 5X Sequence Mode

Brightness Control Manual adjustment

Magnification Range 25X ~ 600X (Manually)

Power Supply USB Port (5V DC)

USB 2.0 & USB 1.1 Compatible

Operation System Windows XP, Vista, Win 7 32 bit and 64 bit.

Language: English, Chinese and other language by selection

System Requirement: Pentium Computer with 700M Hz & above,
20M HD Space CD ROM Driver, 64MB RAM, Direct X VGA Card

CD disk Driver and Micro-Measurement Tool

Product dimension 112 mm (L) X 33 mm (R)

Product net weight: 380g

Available color: Iron gun colors.

Notes before use

1. Don't disassemble the digital Microscope or change the interior parts, it can cause damage.
2. Don't clean the Microscope with alcohol organic solvents
3. Don't touch the lens with your fingers.
4. Avoid outdoor use if possible.
5. Storage temperature , 0°C ~ 40°C, Humidity:45%RH ~ 85RH%.
6. If the product gets wet, leave PC connection immediately. And do not disassemble or dry by hair dryer. Send to repair center if the digit microscope was effected by liquid or other elements.
7. Measurement Data only for reference.

Product Outlook & Standard parts

1. Digital Microscope (1pcs)
2. USB 2.0 cable

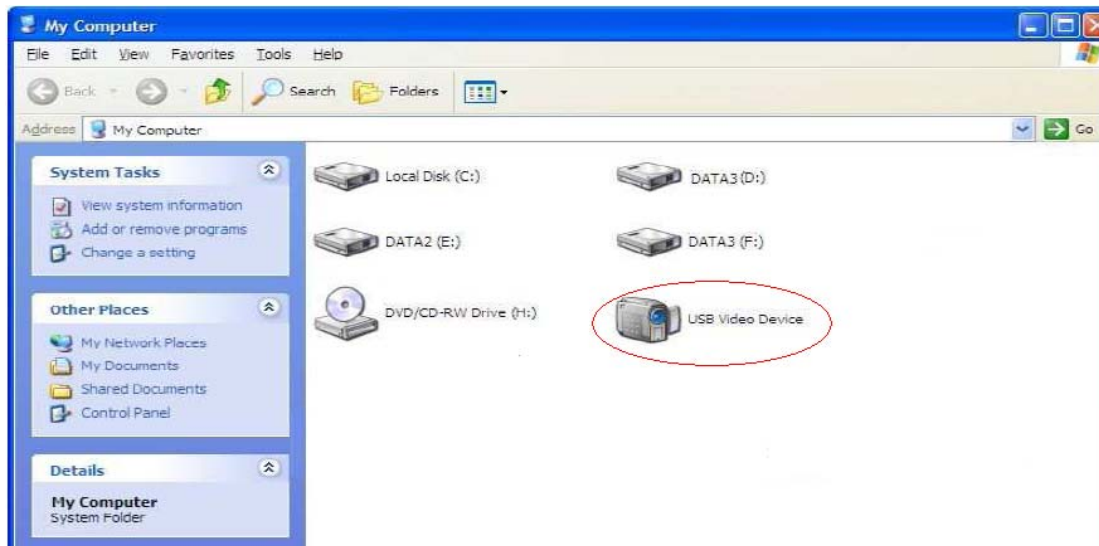
3. Metal fixed Stand (1pcs)
4. CD ROM (Driver, Measurement software, User Manual)
5. User Manual

Hardware system requirements

Windows 2000, XP, VISTA, WIN7 Pentium 1G, Celeron, AMD 1G & above, 128MB Memory, 150MB Hard Disc memory space, 16-bit & above VGA, CD-ROM, USB2.0 or USB1.1.

How to install the Driver

S04-600X Digital Microscope is a free Driver Product, it can work immediately after being connected to the computer with an operating system above win2000 version. Connect the Digital Microscope by USB2.0 cable to your computer, double-click 'my computer' icon on your computer desktop, below interface will show up.



Double click the **Video device icon** as above red marked in your computer. Now it is ready to use.


If you can't find the Video device, or if your computer can't recognize it, please follow below steps to install the driver.

Insert the attached CD, system will auto run to the interface as below and follow the steps to complete the installation:

(NOTE: If the computer can't auto run the disc, you need to operate manually by click "My Computer" → "DVD/CD Driver" → run "AUTORUN.EXE")

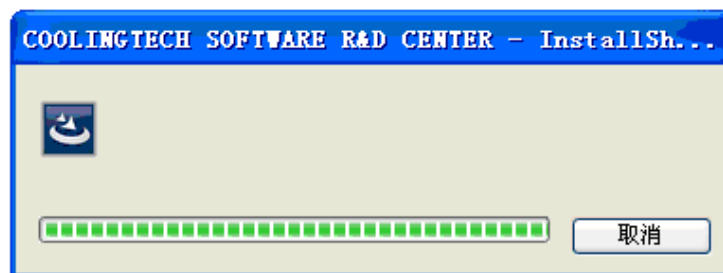


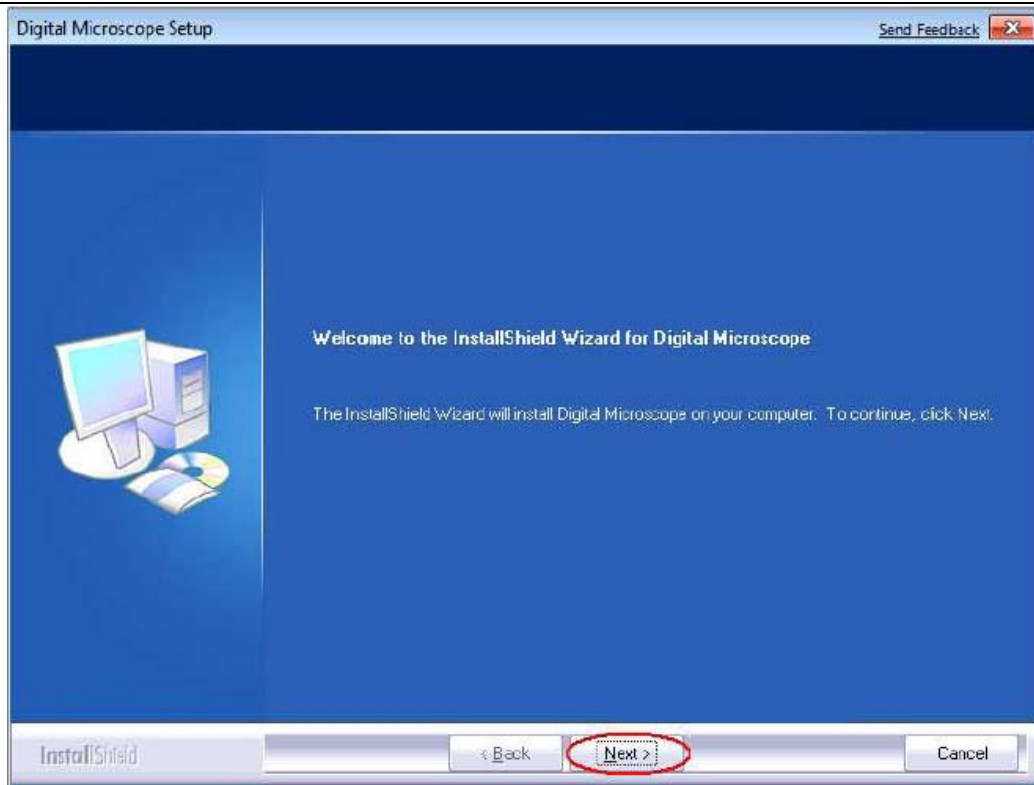
1. Driver installation

1 Click  to continue, the screen will show the installation progress.

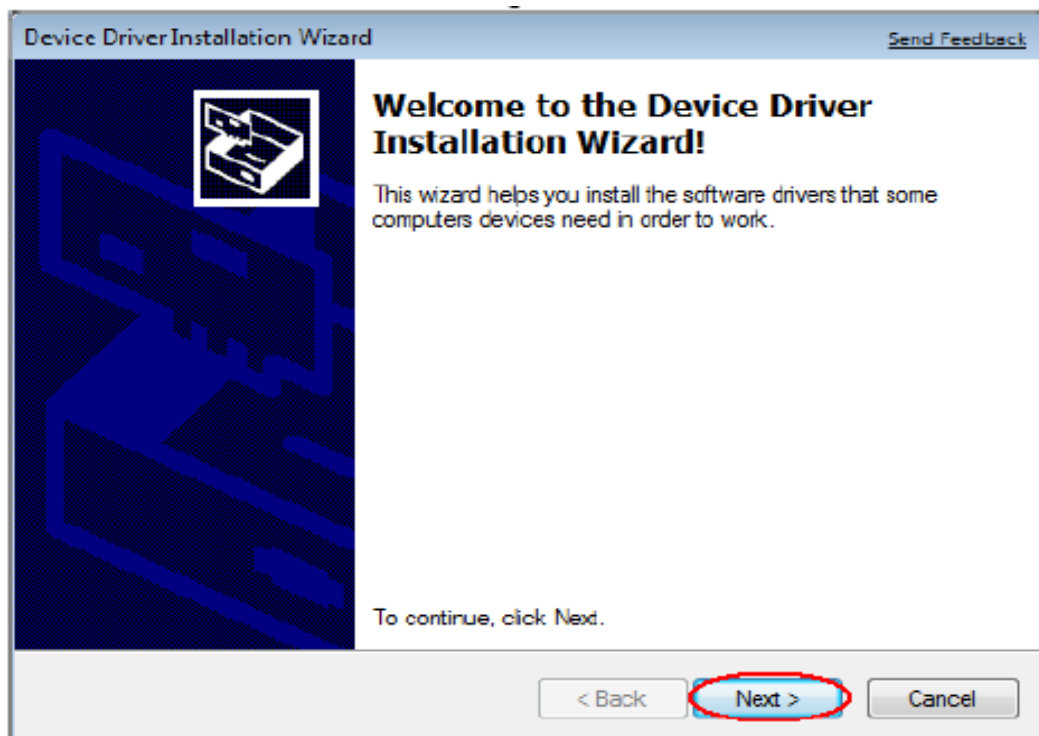
COOLINGTECH SOFTWARE R&D CENTER

↑
↑
↑
↑
↑
↑
↑





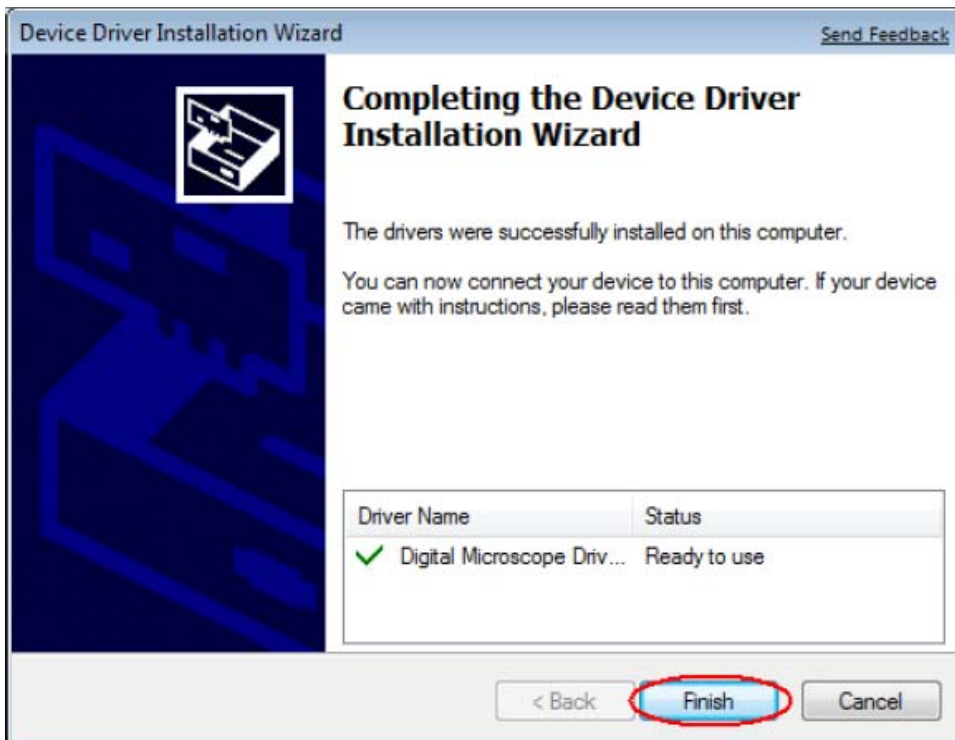
Click "next" to continue, as followings:



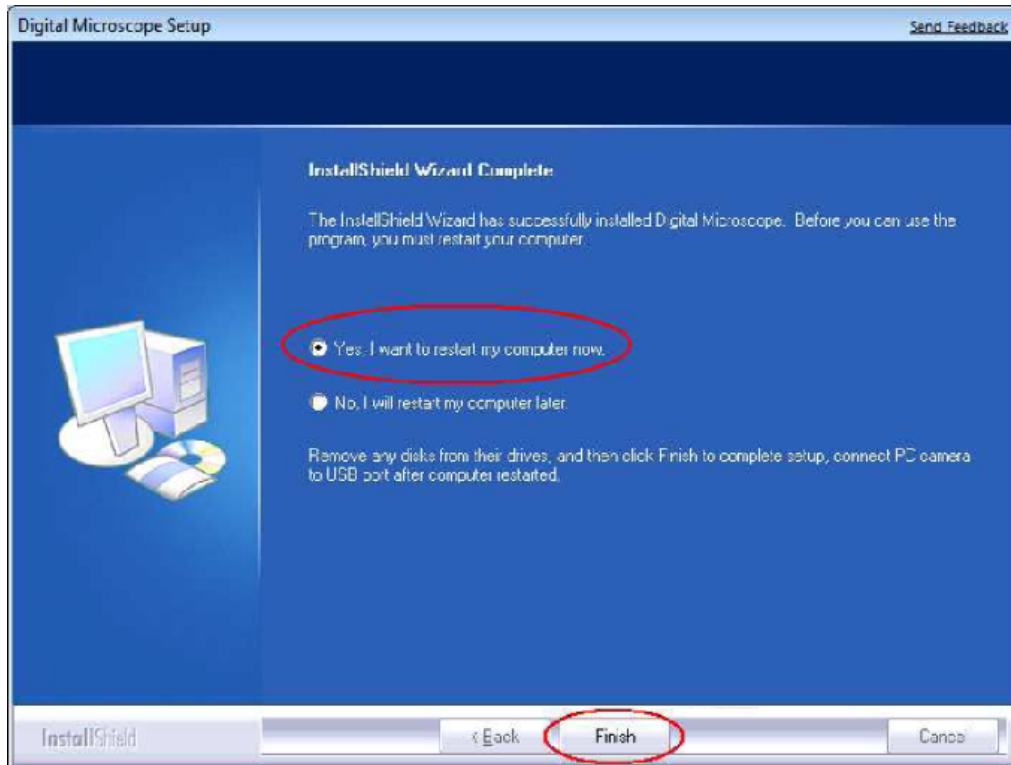
Click "next" to continue, as followings:



Click "continue Anyway" , as followings:



Click "Finish" to continue, as followings

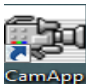


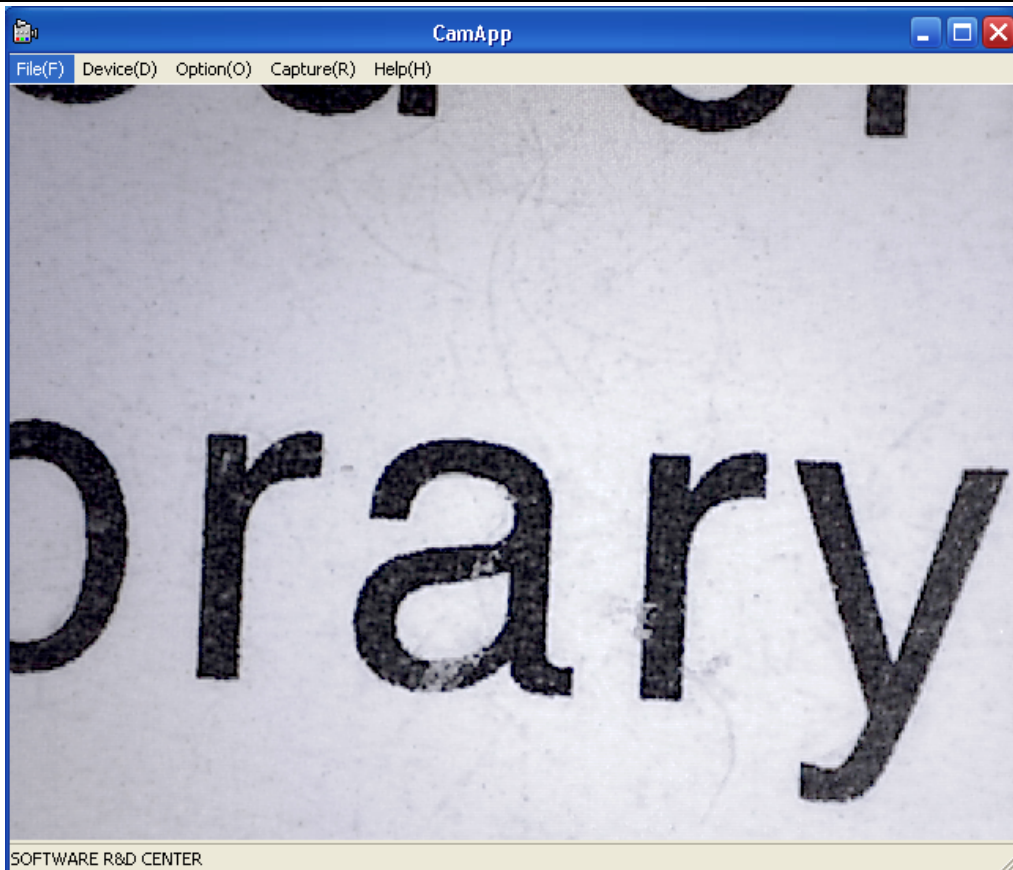
Select 'Yes, I want to restart my computer now', and click "finish".

After restart your computer, Plug-in the USB port of Digital Microscope into Computer USB port. Following the user guide by steps and complete by click "Next" -> "Continue anyway" -> "Finish".

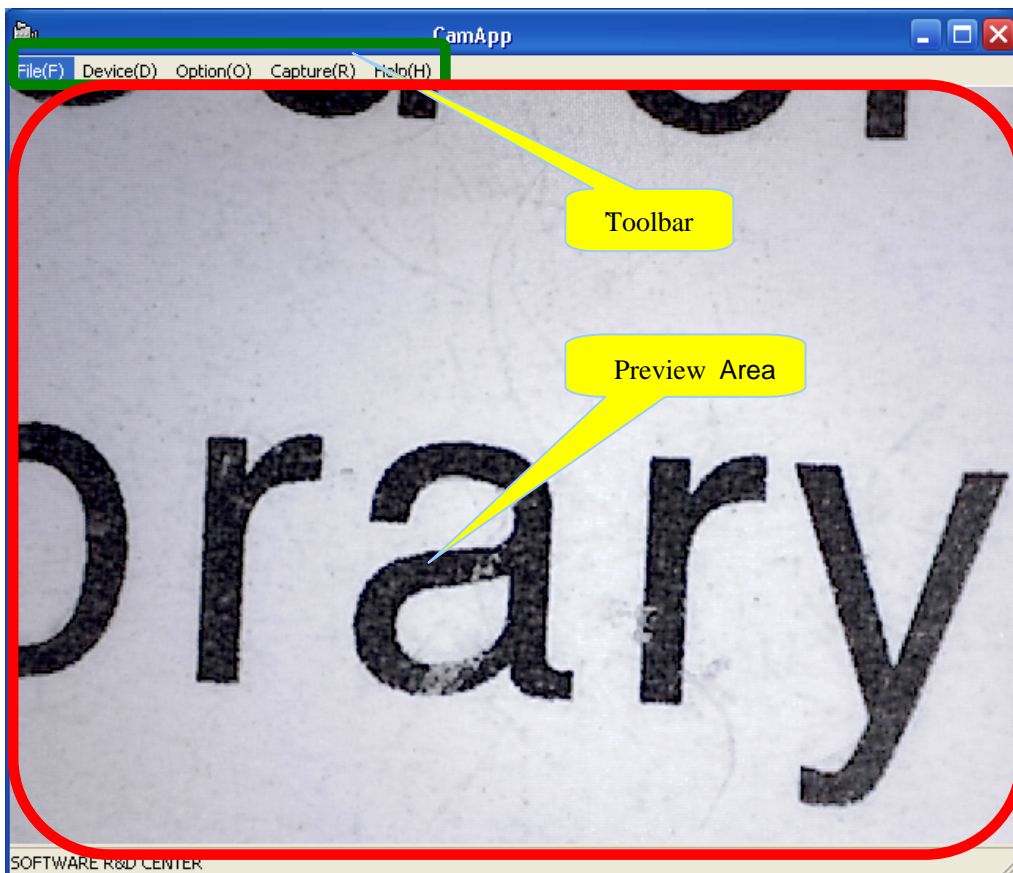




5, When Drive are installed,  icon will appear on the desktop. Double-click it



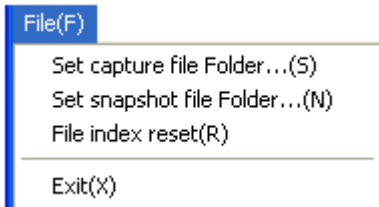
6 Interface



7 Tool bar introduction

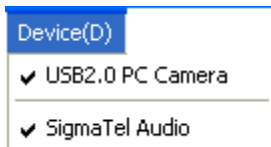
File(F) Device(D) Option(O) Capture(R) Help(H)

1 Click File(F)



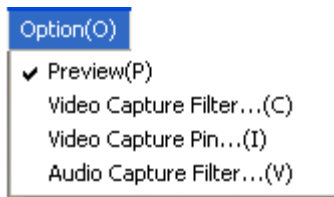
This equipment has video and photo function. Before video and photo Please click "Set capture file folder path" or "Set snapshot file path" to set the file storage area .

2 Click Device(D)

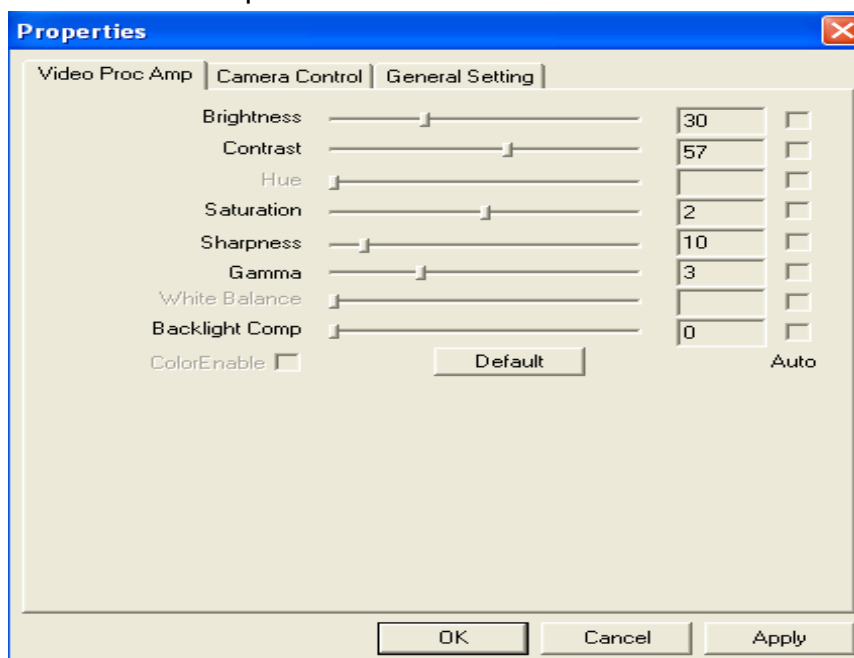


You can select the different equipment according to your request if your computer has two video equipment or more

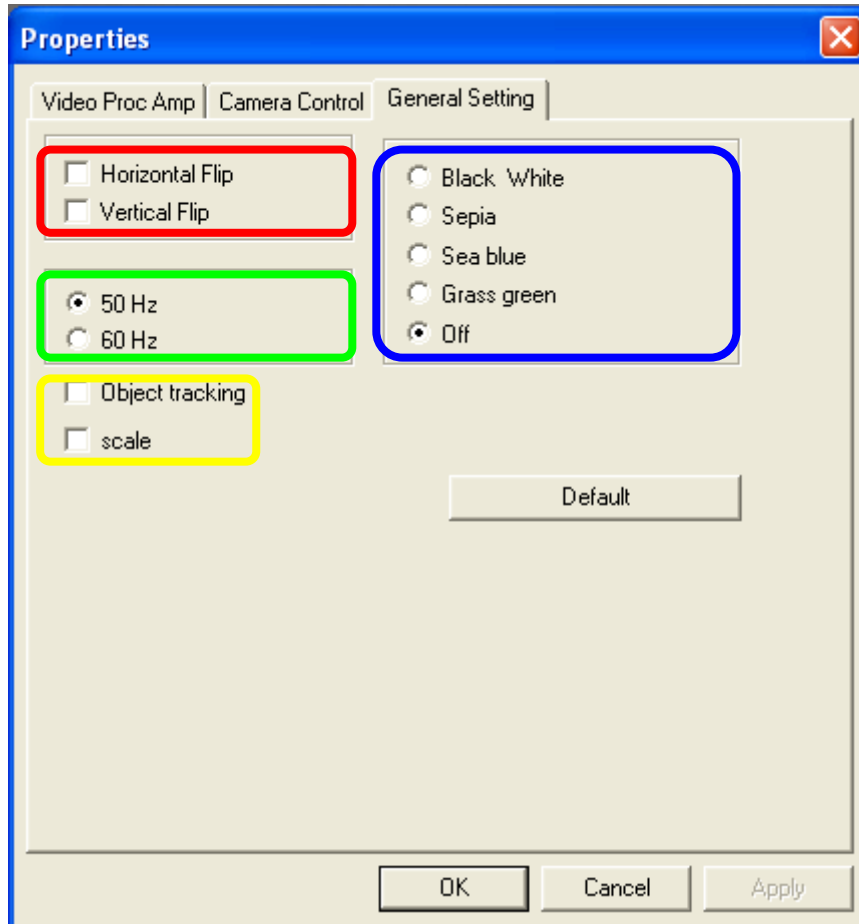
3 Click Option(O)



1 Click "Video capture filter"

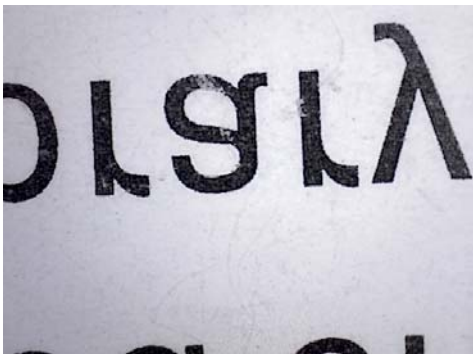


Video parameters setting, you can change some values according to your request, Do not recommend to make some changes because the parameters has been adjusted to best form before leaving factory If the values are changed negligently, and click "default" to recover the factory shipped state. Click "General Setting" and entering Special effective function

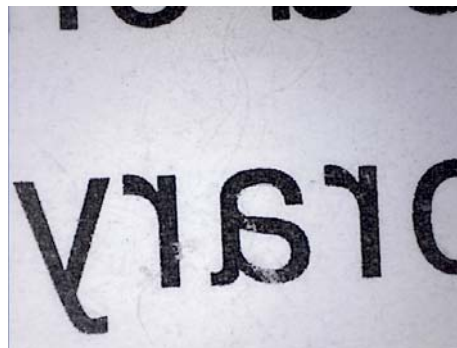


"Horizontal Flip" and **" Vertical Flip"** in the red form.

Horizontal Flip



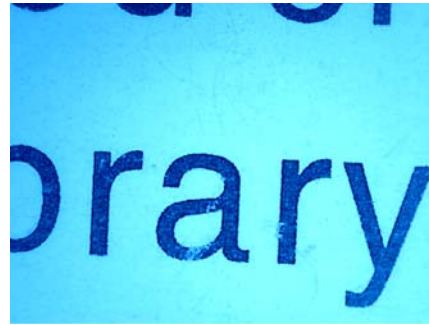
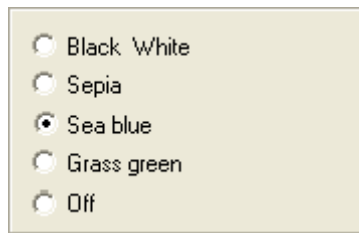
Vertical Flip



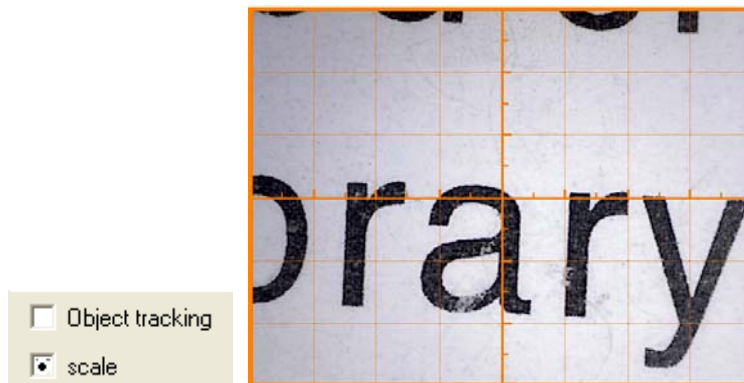
"frequency" in the green form

Special background in the blue form, the back ground will be changed by your different selection

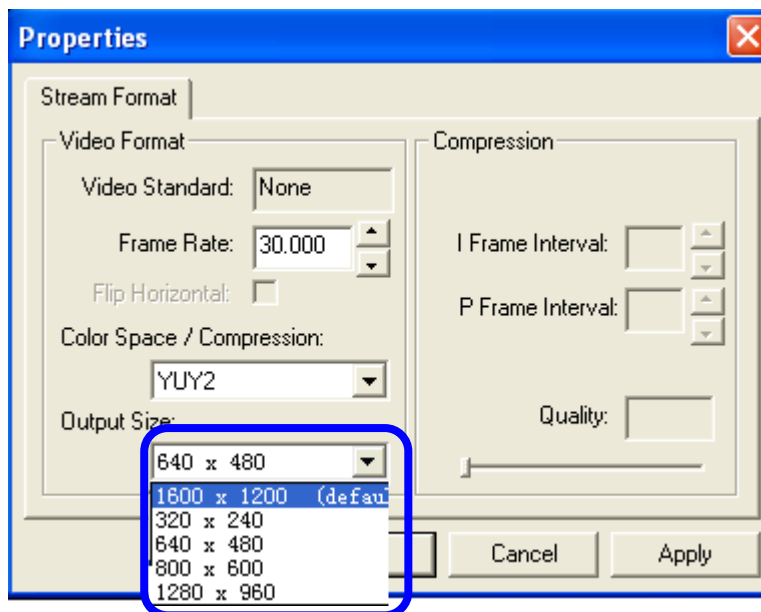
For example:



“Object tracking” and “Scale” in the yellow form

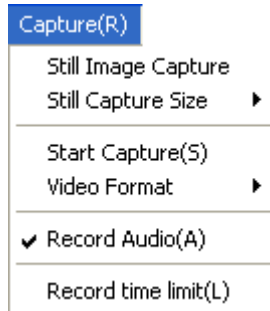


2 Click “video capture pin..”

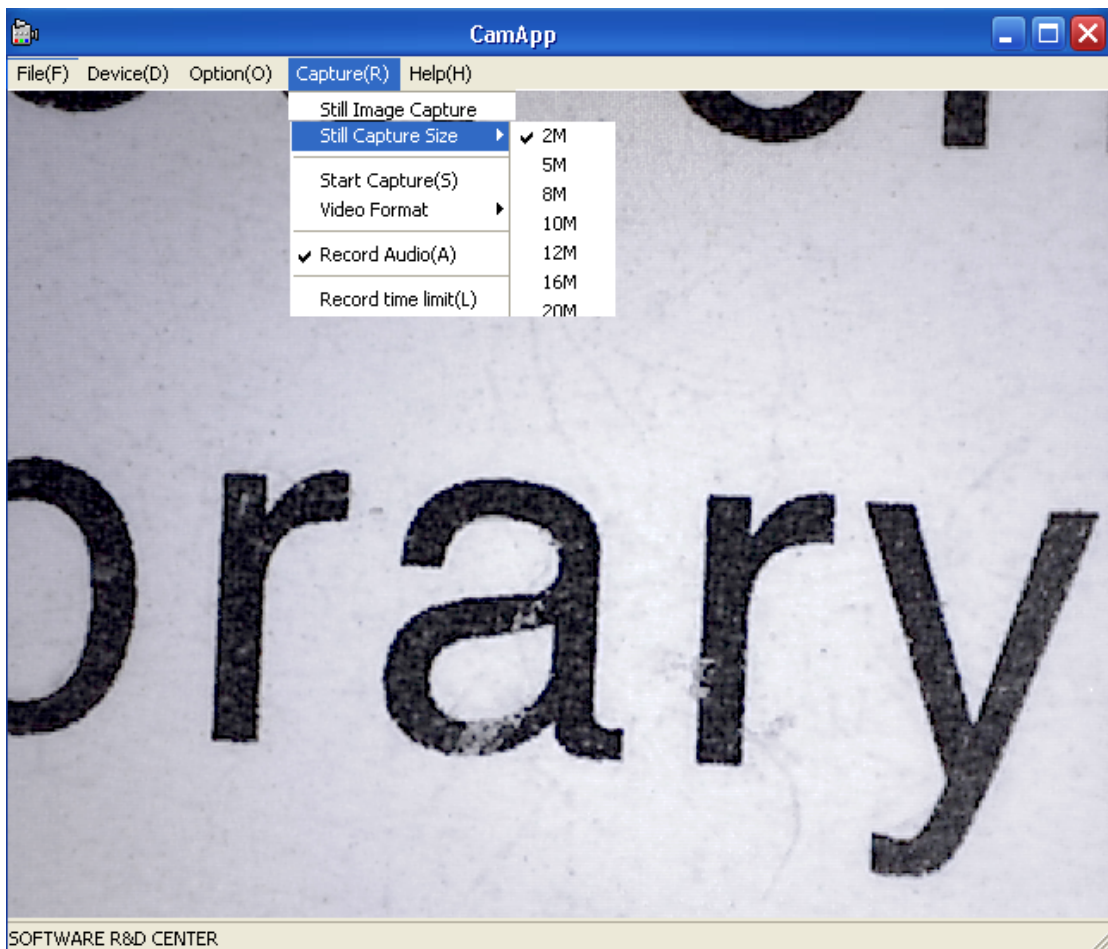


You can set the different output size according to your request

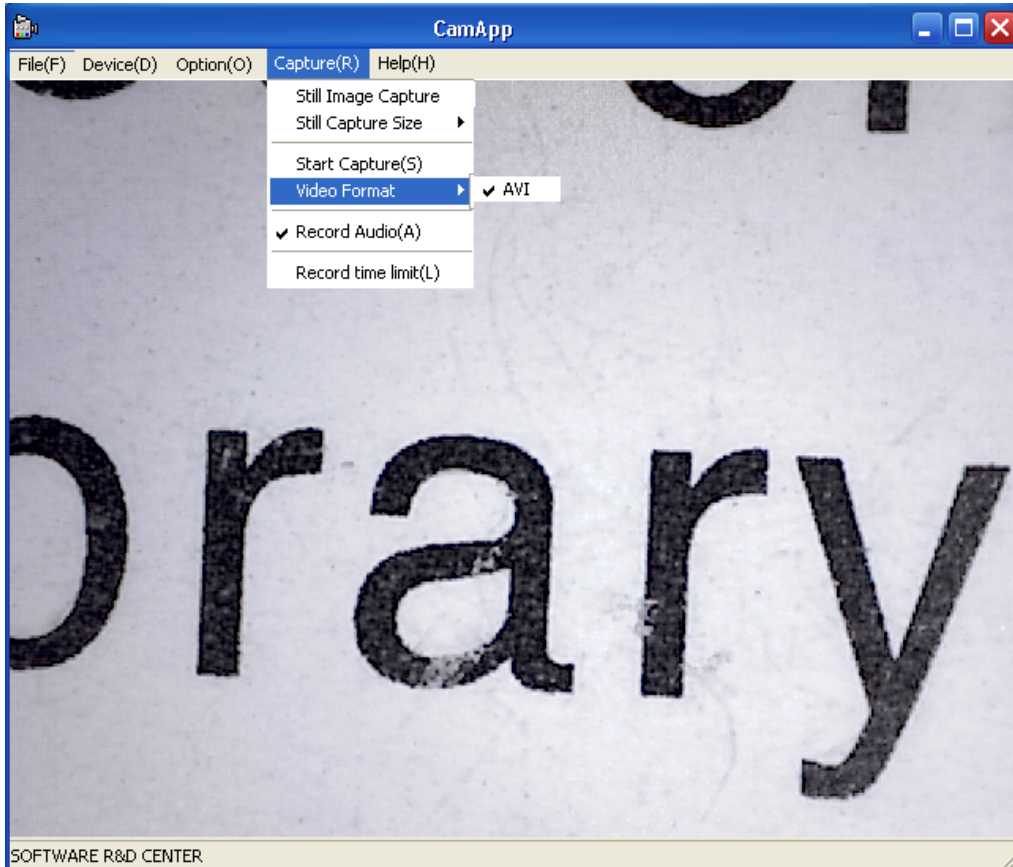
4 Click **Capture(R)** Photo and Video setting



Select “Still Image capture” and “still capture Size”

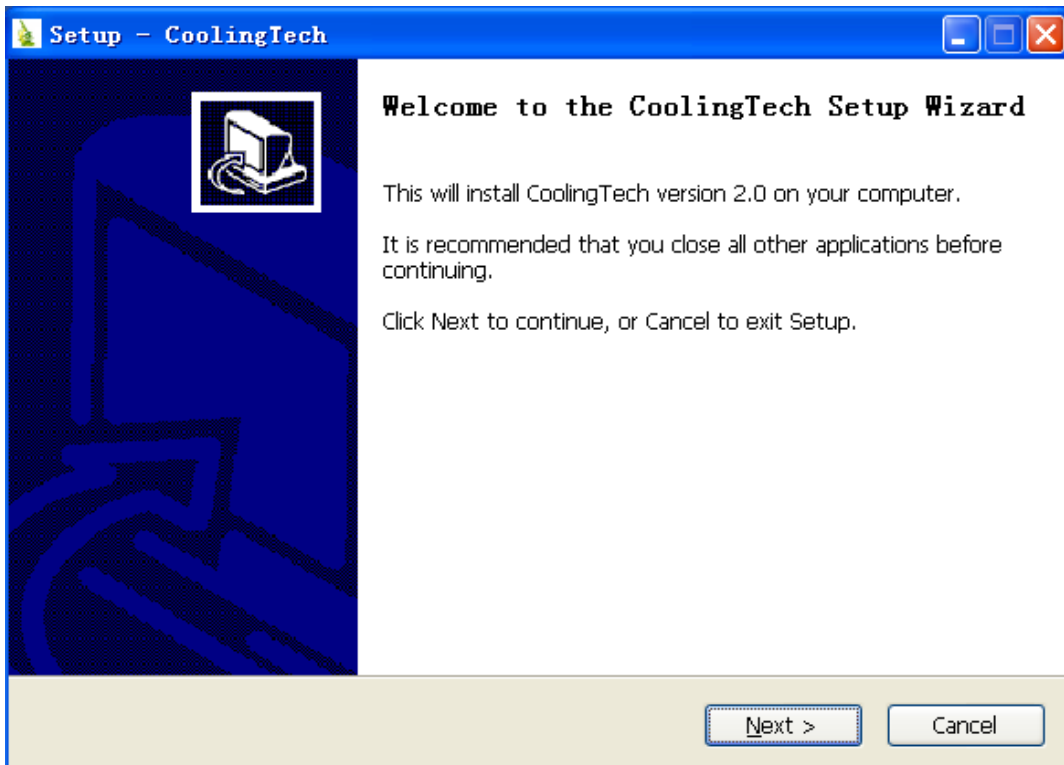


Video Format AVI.

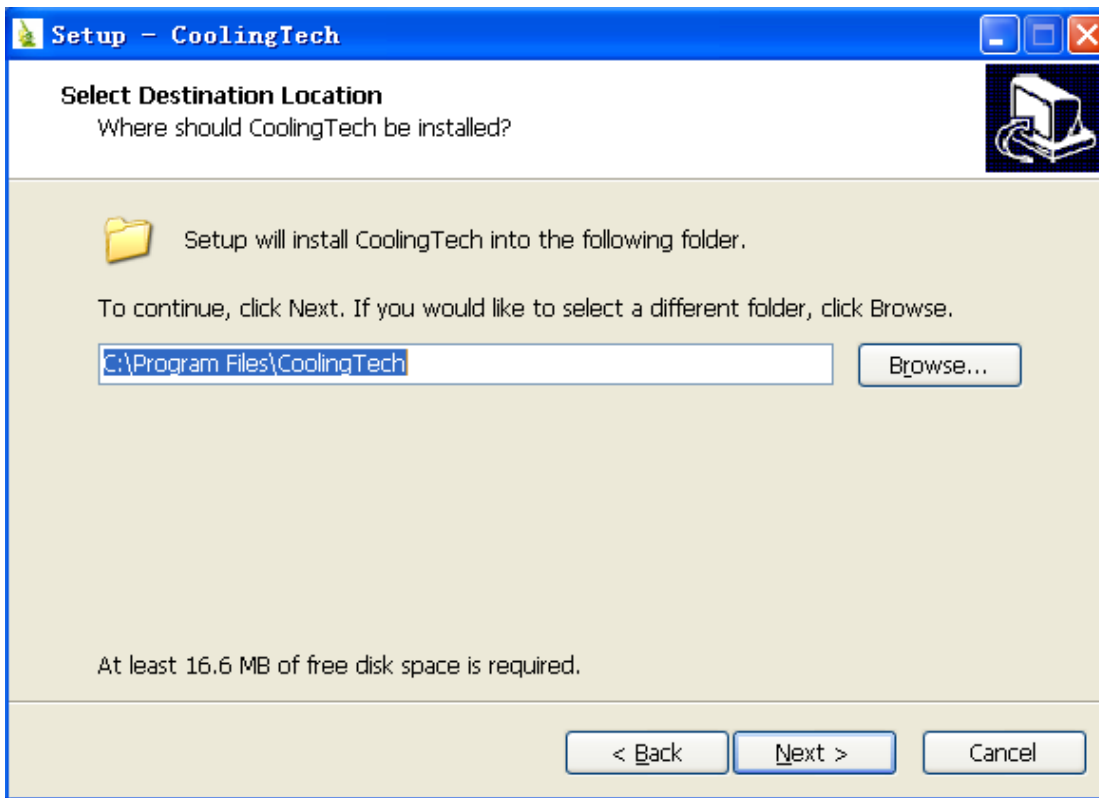


2 Measurement installations:

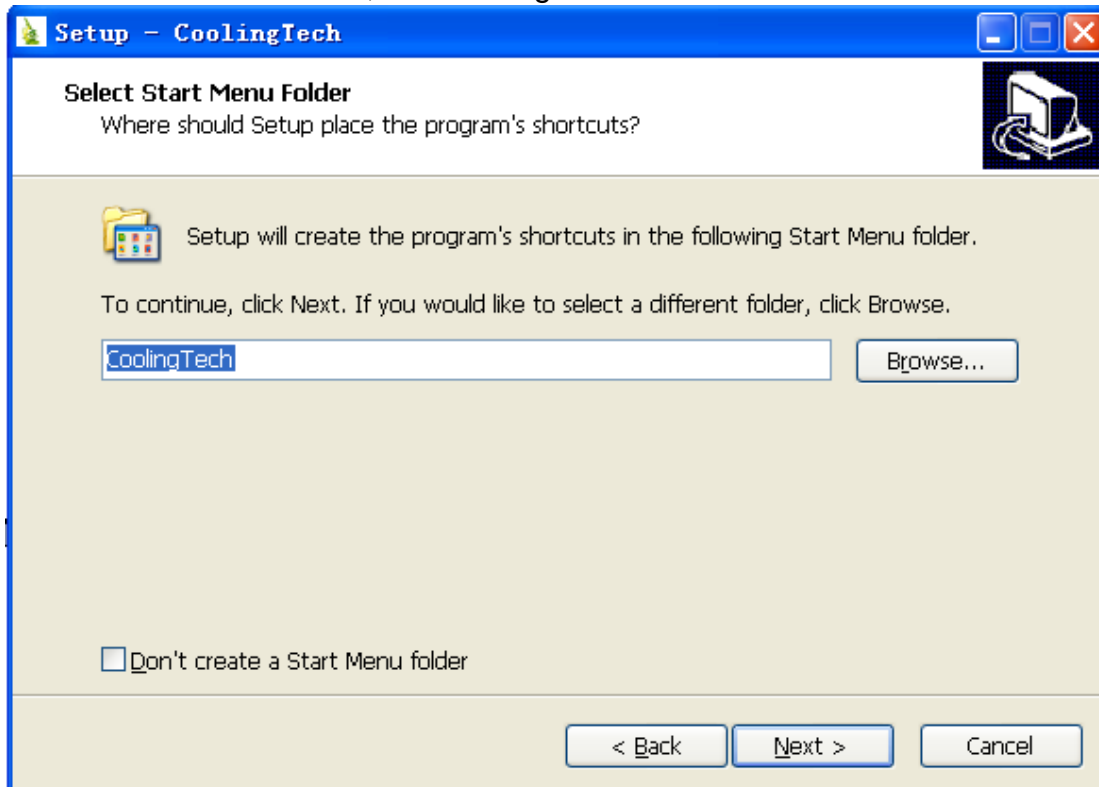
1 Click **Measurement** to continue, as followings



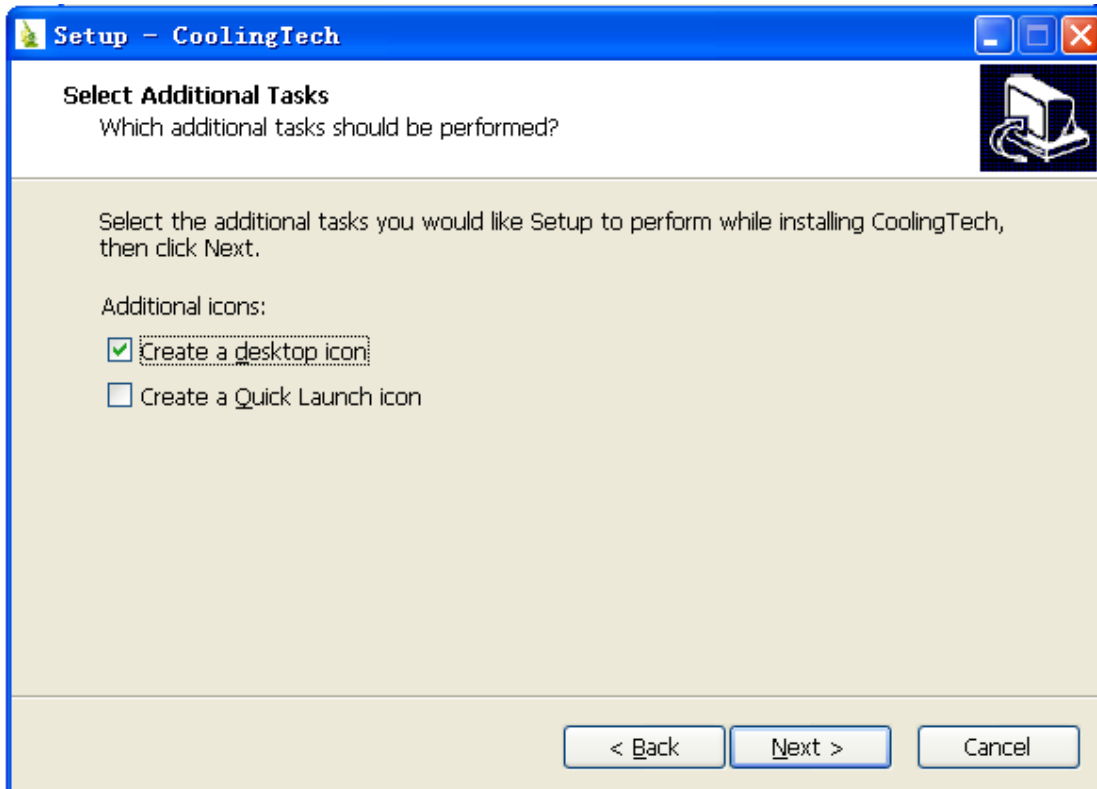
2 Click “next” to continue, as followings



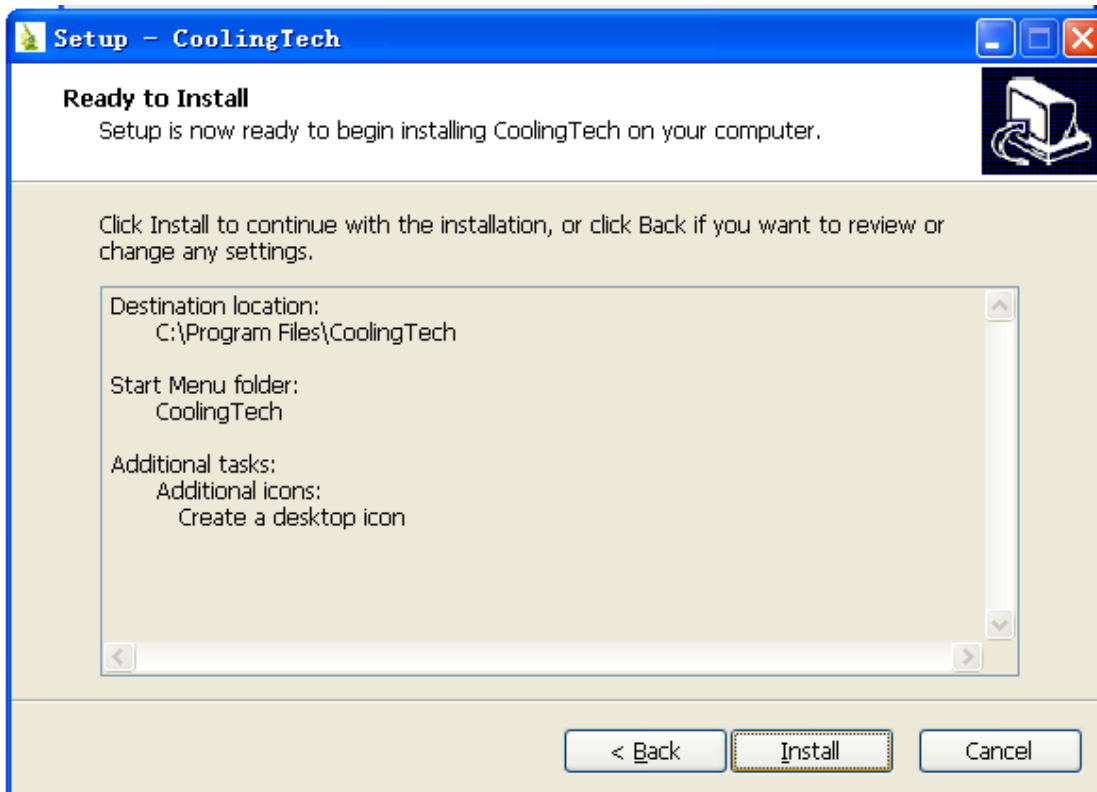
3. Click “next” to continue, as followings



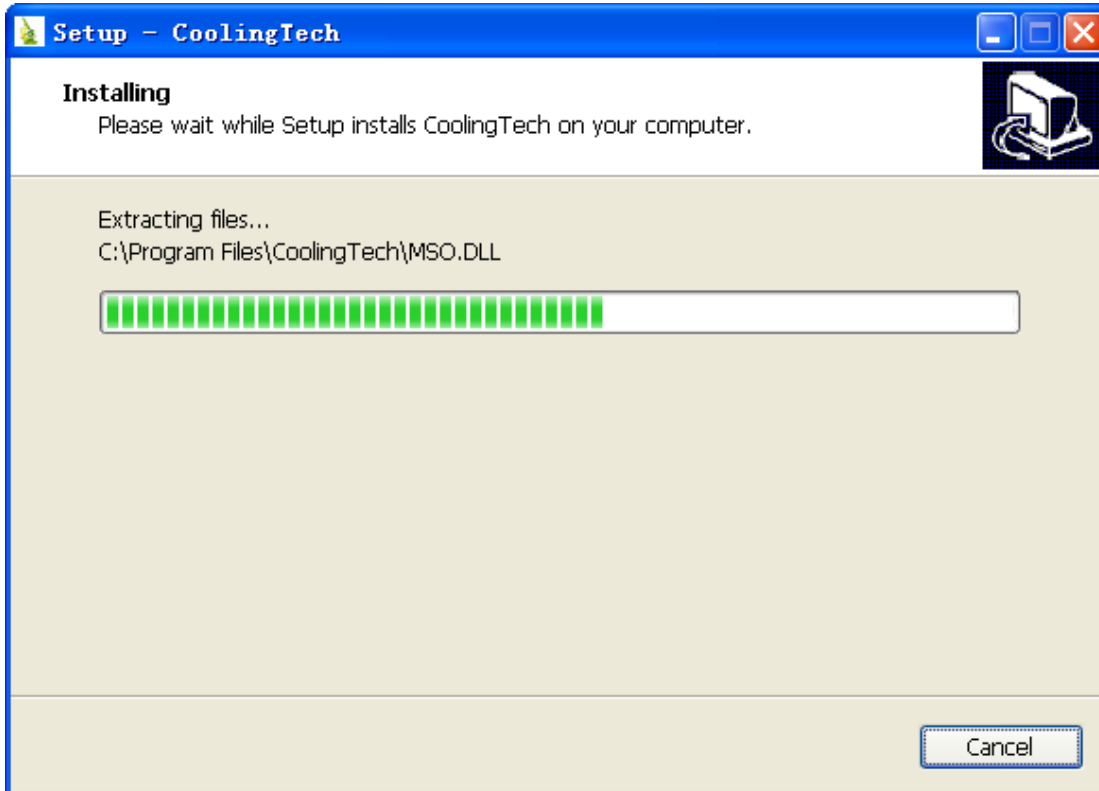
4. Click “next” to continue, as followings



5. Click “next” to continue, as followings

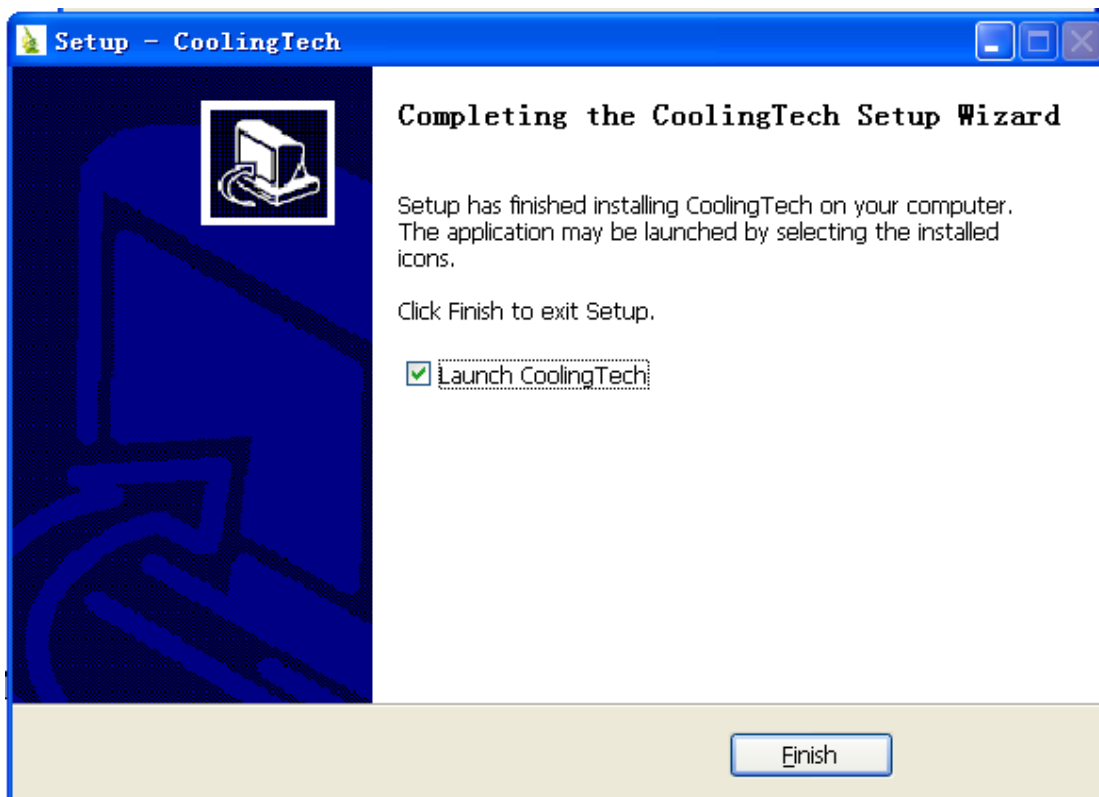


6 Click “Install” to continue, as followings




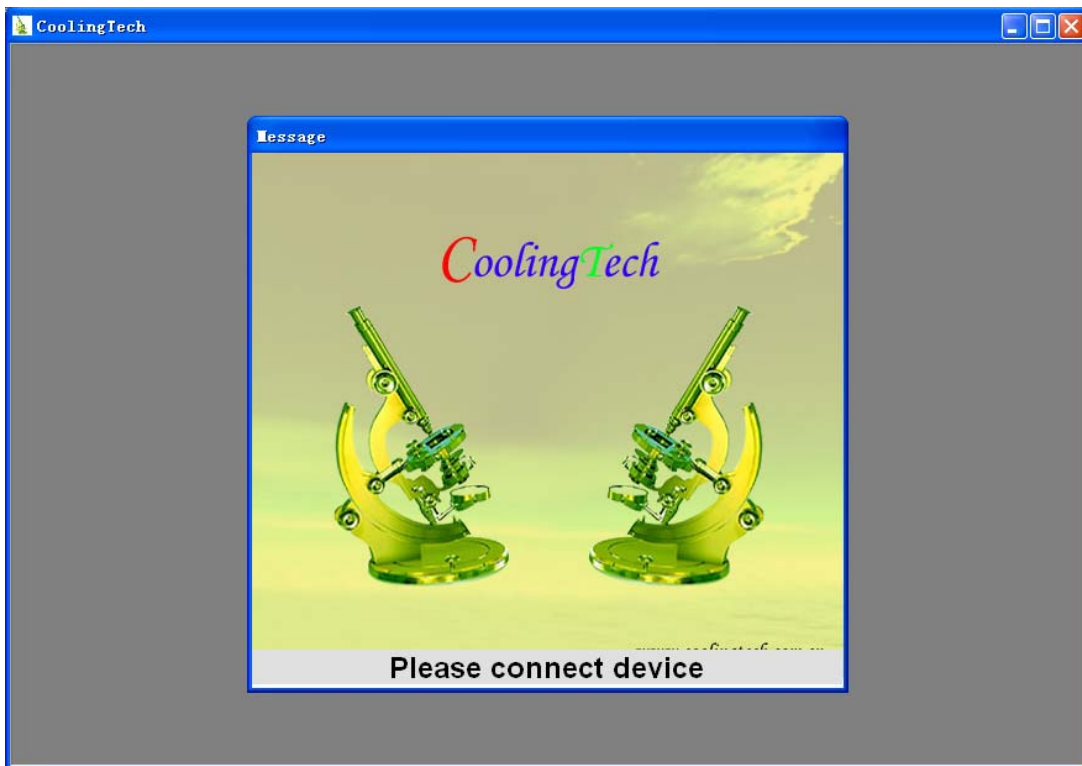
Wait a few

seconds while the installation taking place.

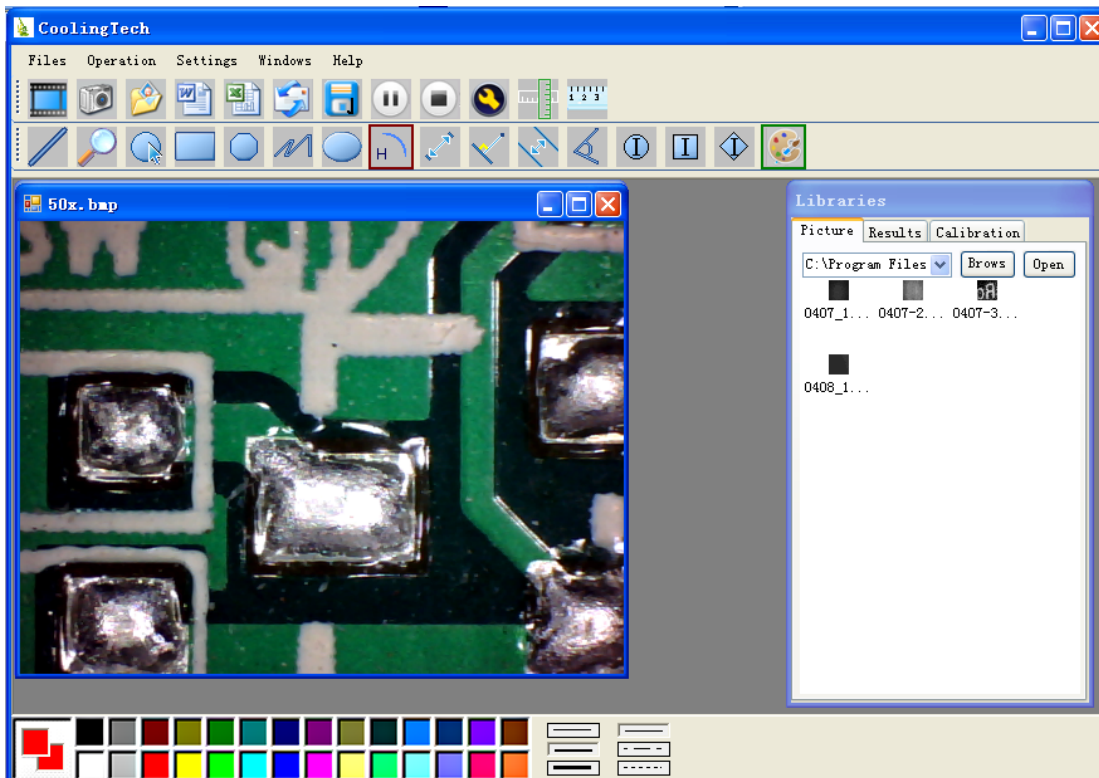



7. Click "Finish" and the installation completes.

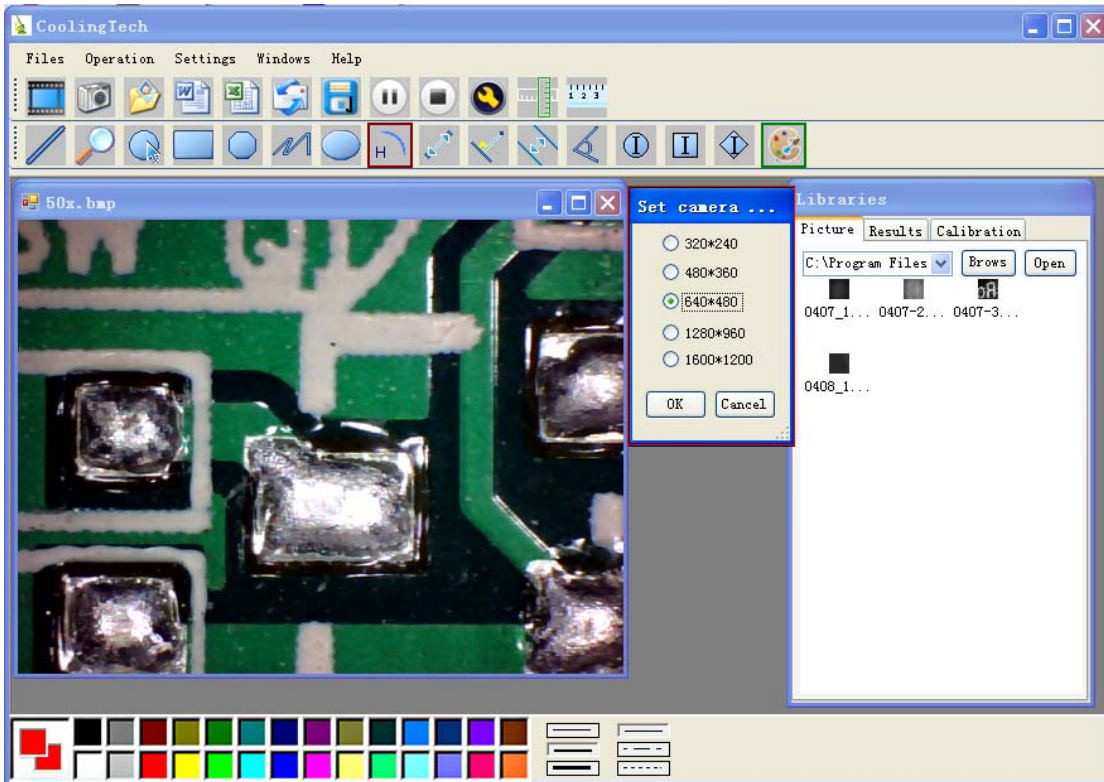
8. After the installation completes, double click  at computer desktop to start using the software.




Plug-in the devices, Display in operation window

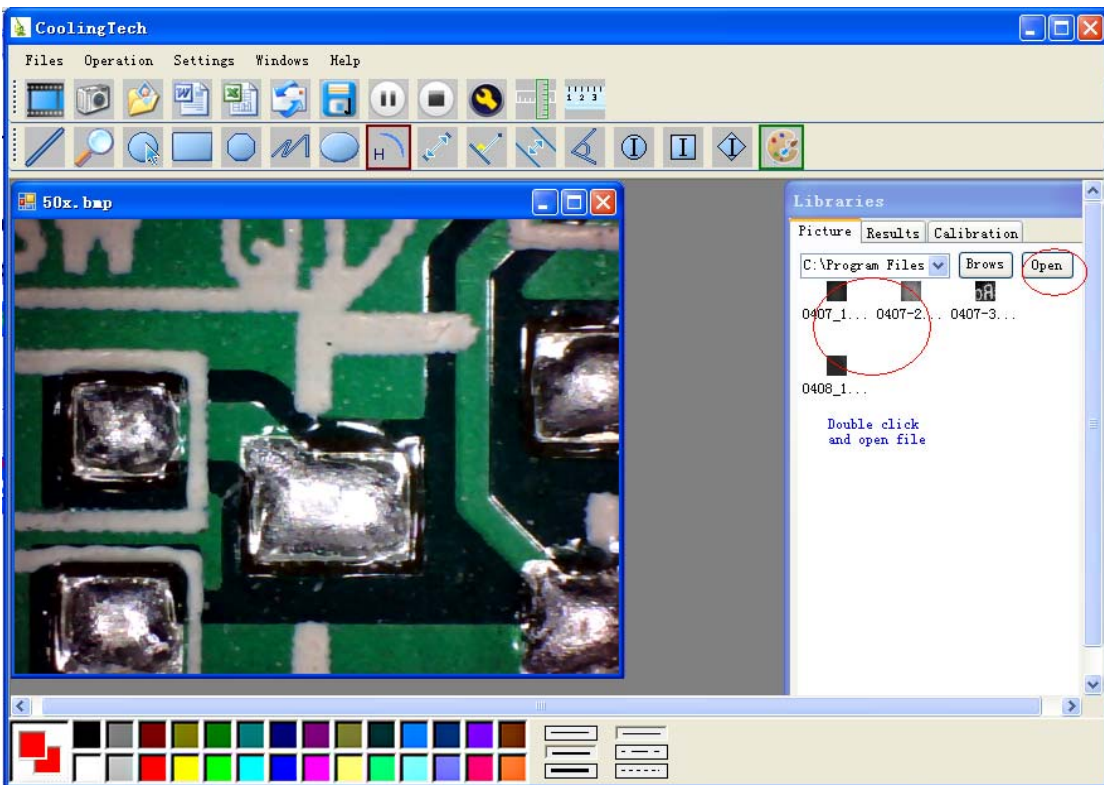




9 Click  ,open the operation system

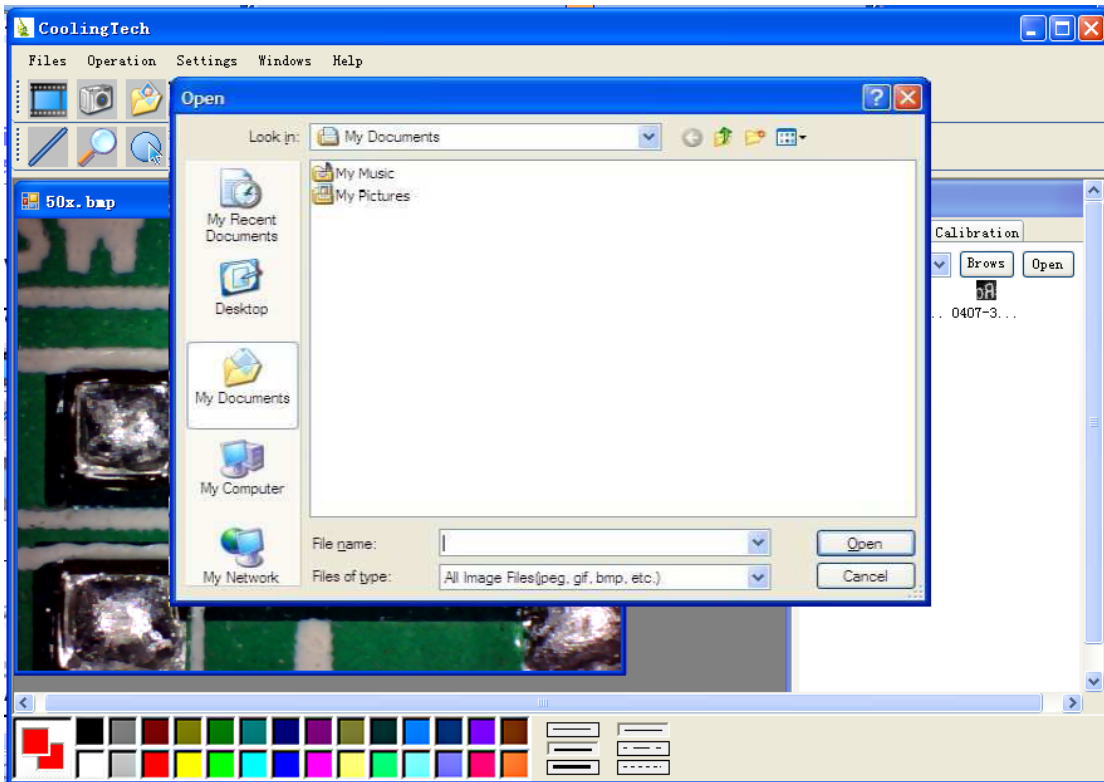


Choose the Image resolution from 320*240 to 1600*1200, default at VGA Mode640*480

10 Click  to use measurement function.




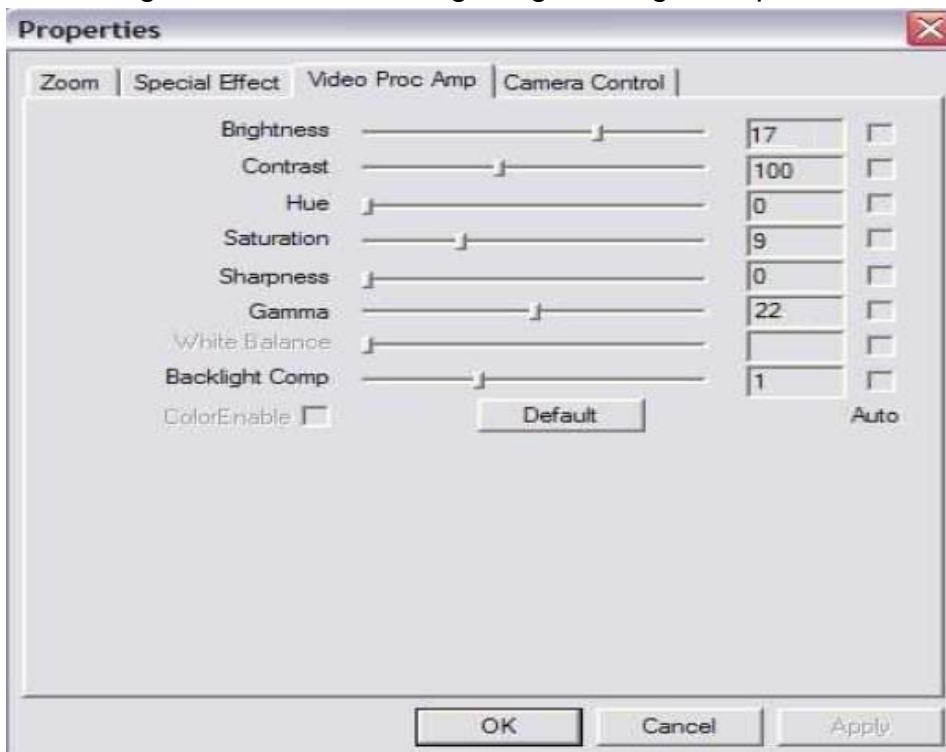
11 Click  to open pictures, and click  to save pictures



12  

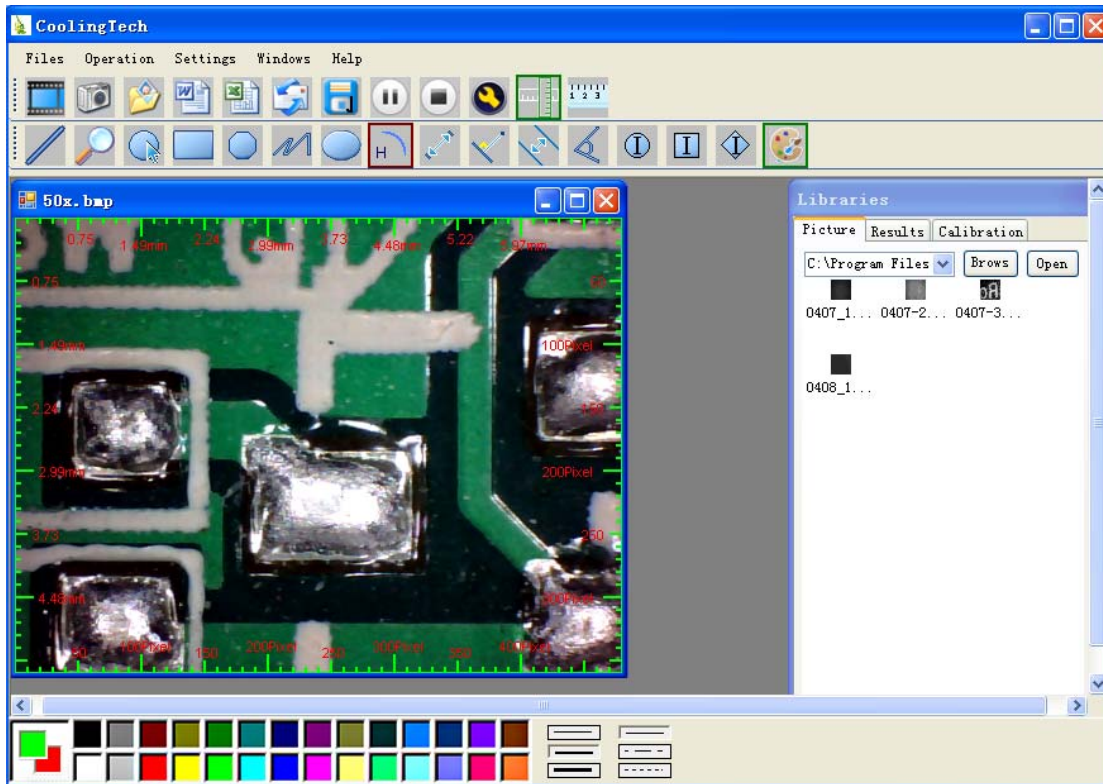
Video PLAY(Pause) ,STOP


13  Image Parameter including Image setting and special effects



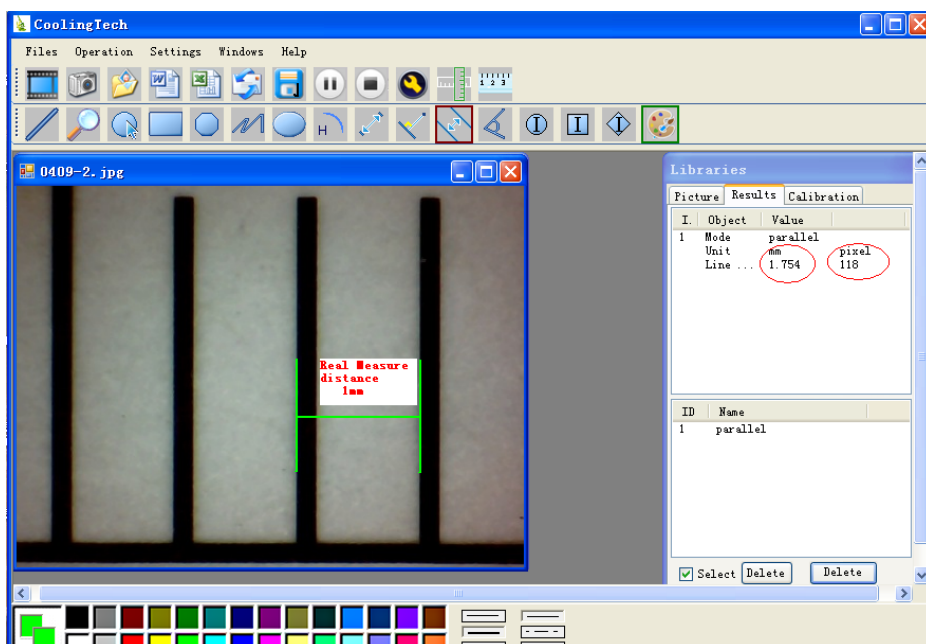
15  Magnifier

16 Click  Ruler, as followings

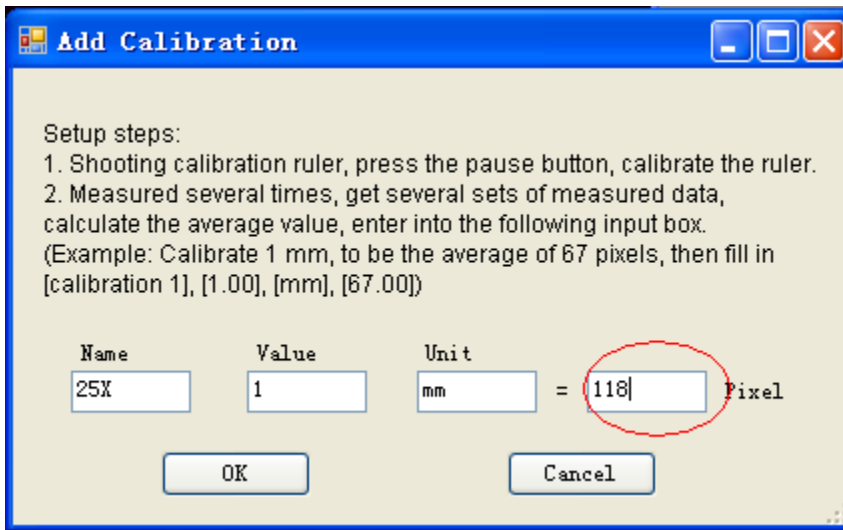


17 Click , start calibration make sure certain accuracy.

Our experience told us that measurement could be controlled at 99% high precision. Measure tolerance could be caused from human eye distortion and defocus. More practice is helpful to measurements.



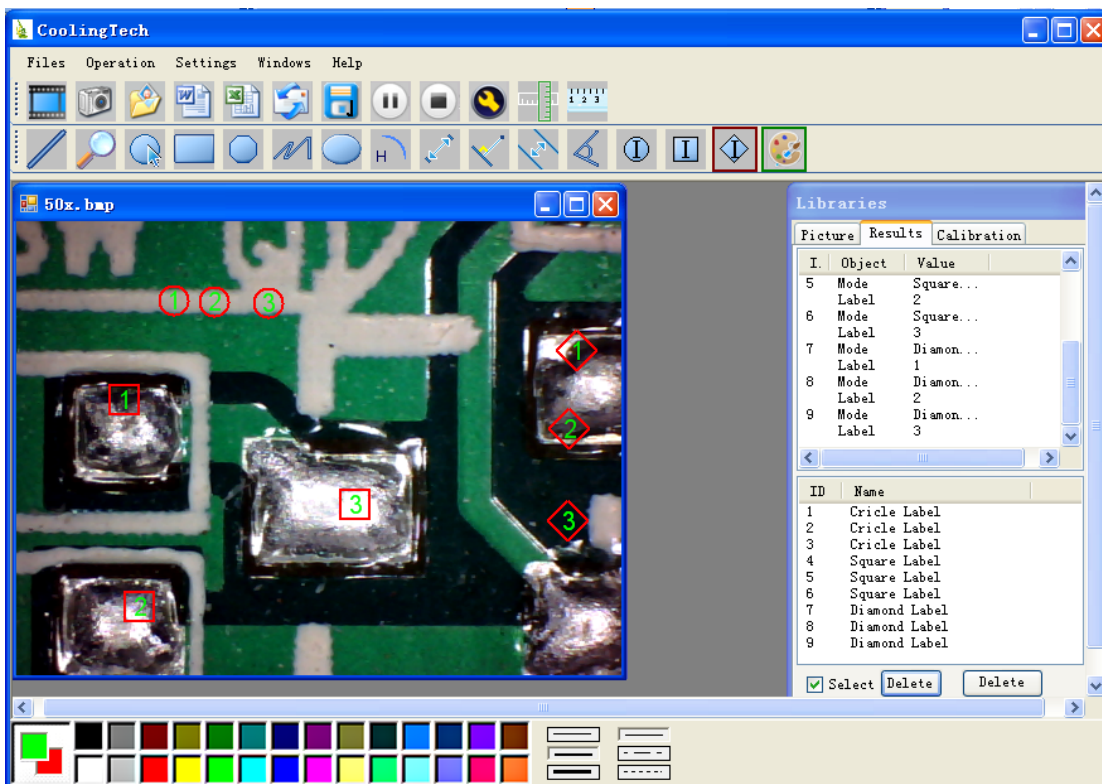
18 Key in the Measure data(Pixel),Unit, and Click' OK'



Warning:

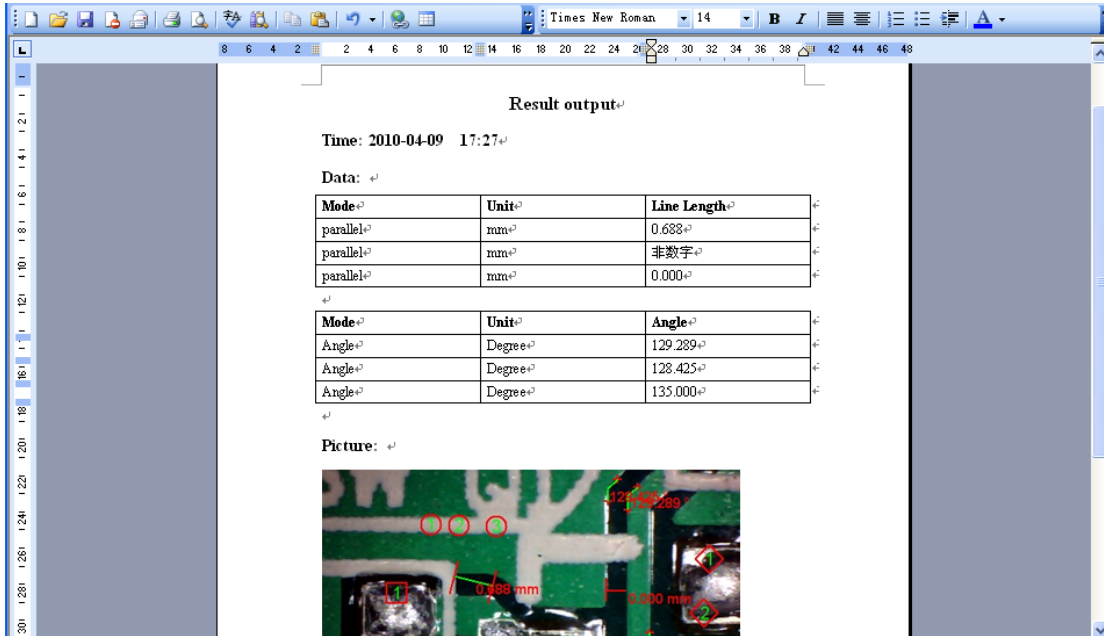
Please do calibration again once Magnification Ratio changed.

19  Color setting of display character



20 Click  to export word or excel format.

Example: Measure data under word file



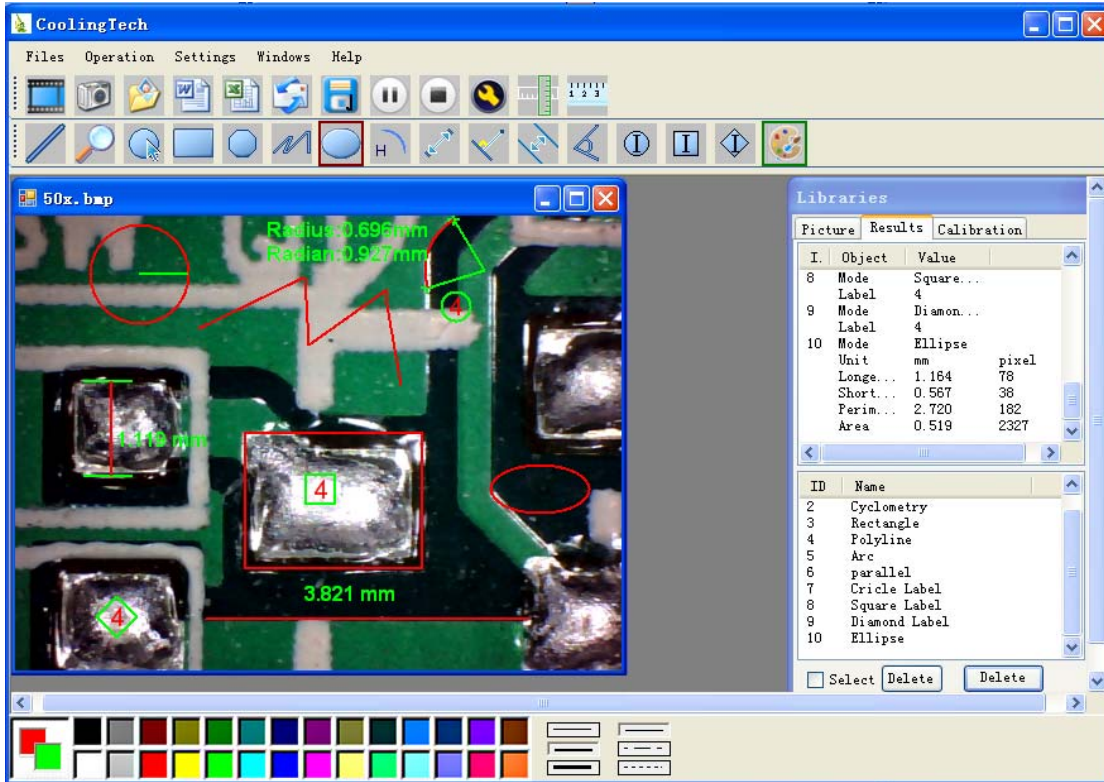
From Left to right:

Line ring Square Polygon Set-line Length

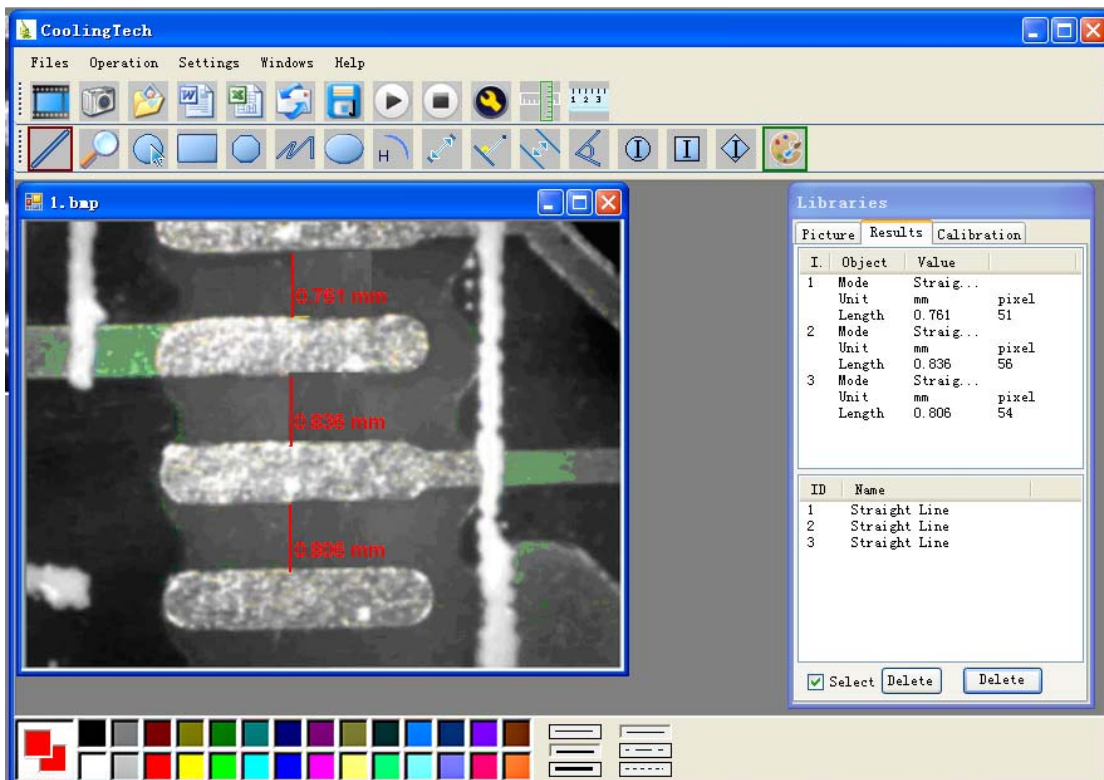
Oval Arc Point to Point distance Point to Line distance

Parallel line Angle

(as below show)

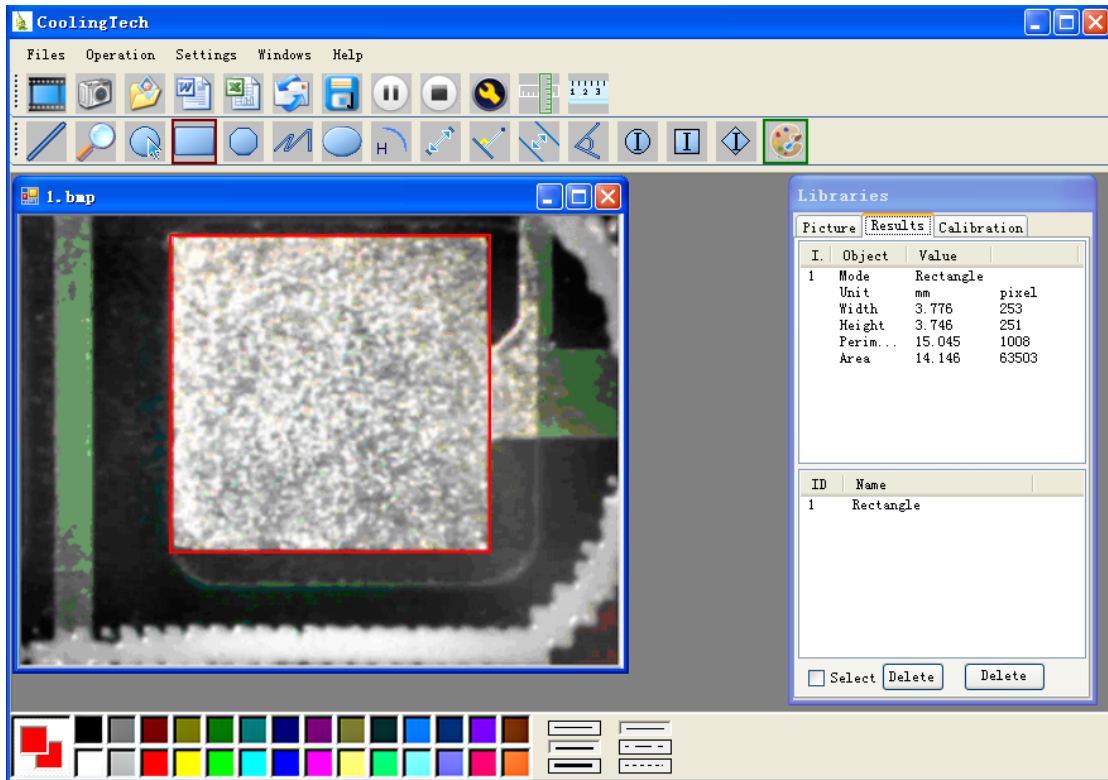


For example 1
Line measurement:



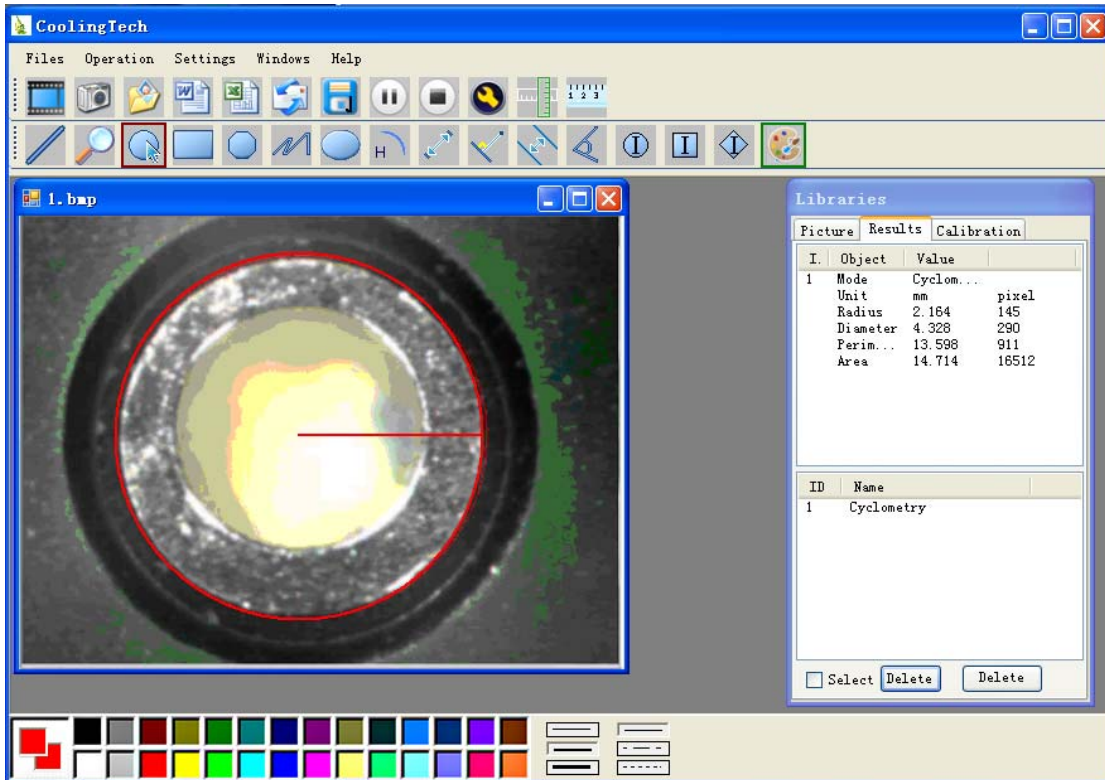
For example 2

Rectangular measurements:



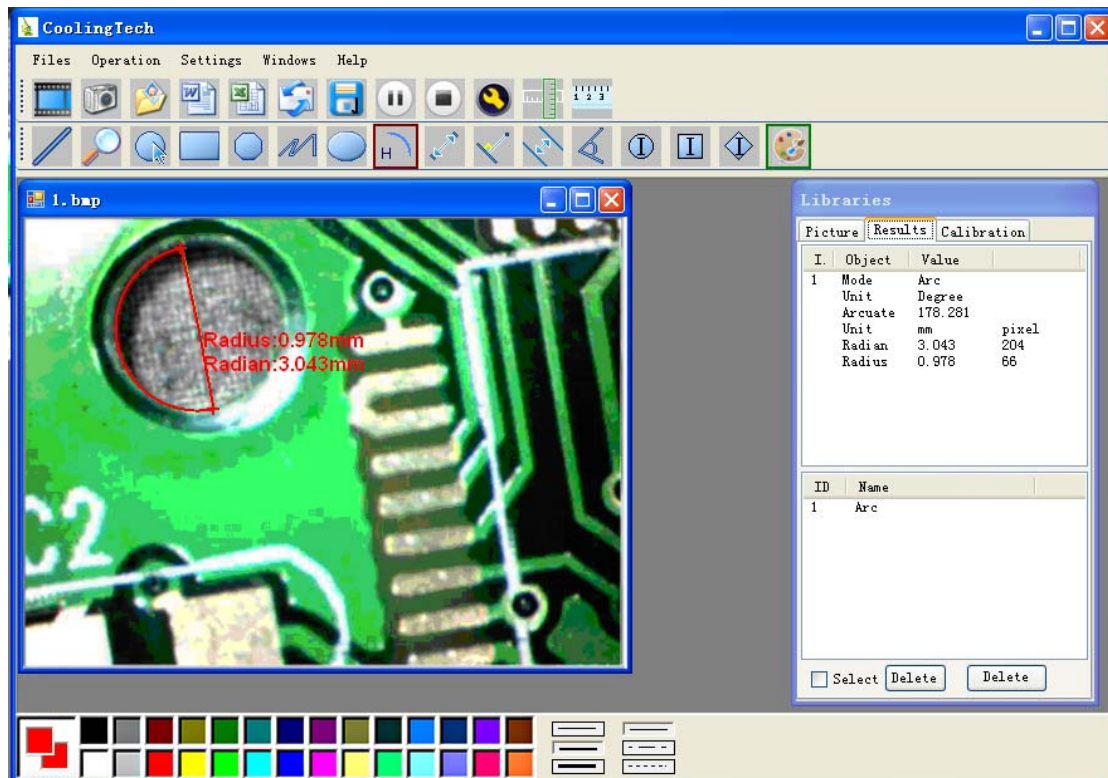
For example3


Ring measurements:



For example 4

Arc measurements:



3Please click  to Continue when the NET Framework 2.0 is necessary, and you must install the application “Instmsia.exe” of disk if your computer operation system is MAC OS.