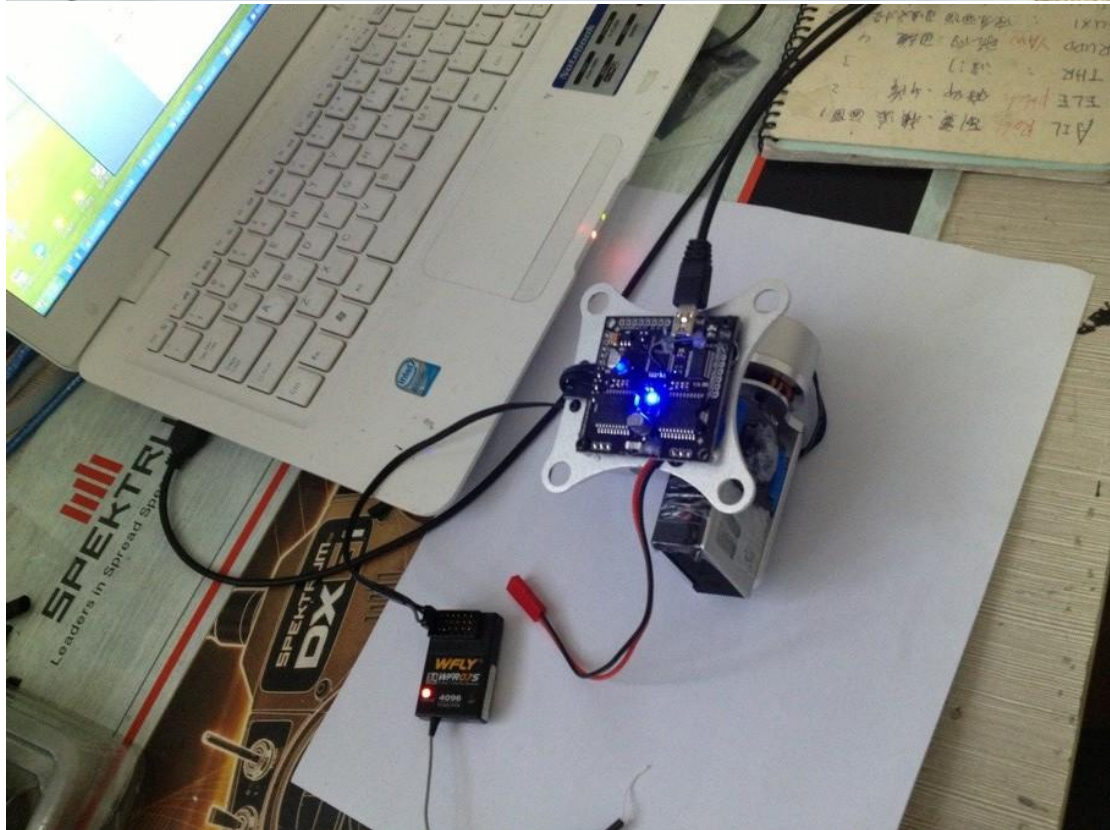
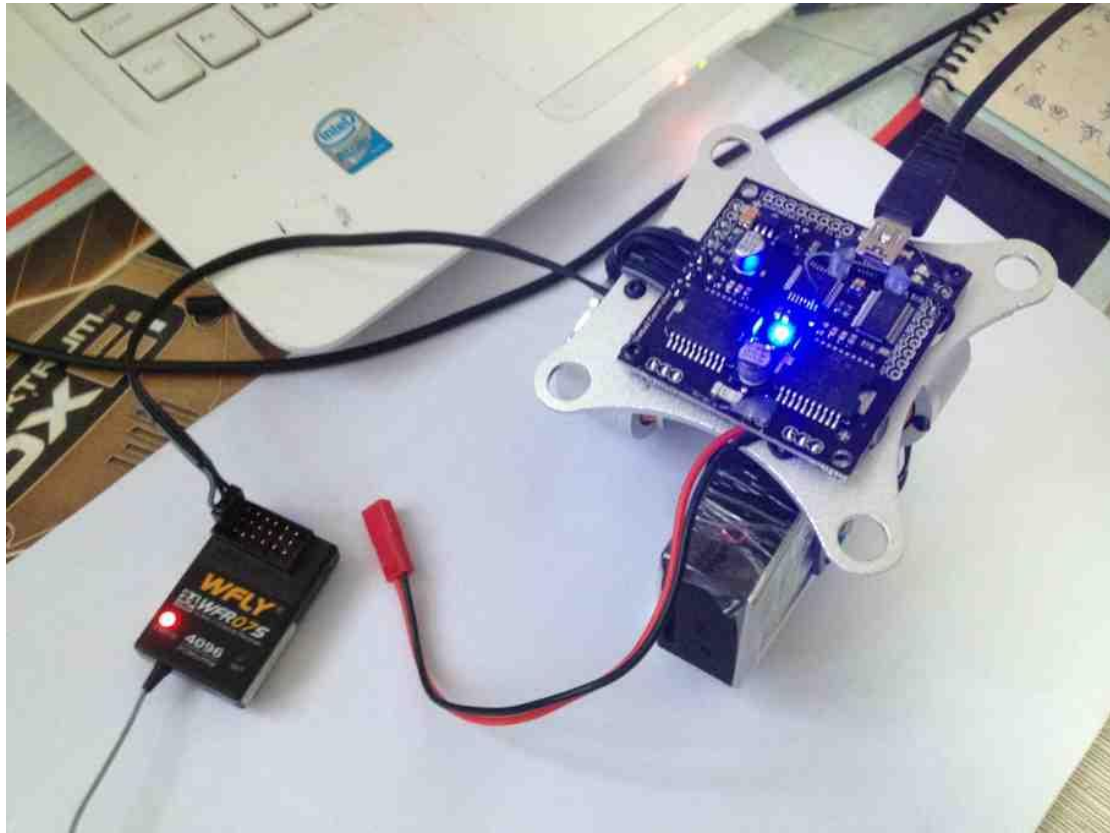


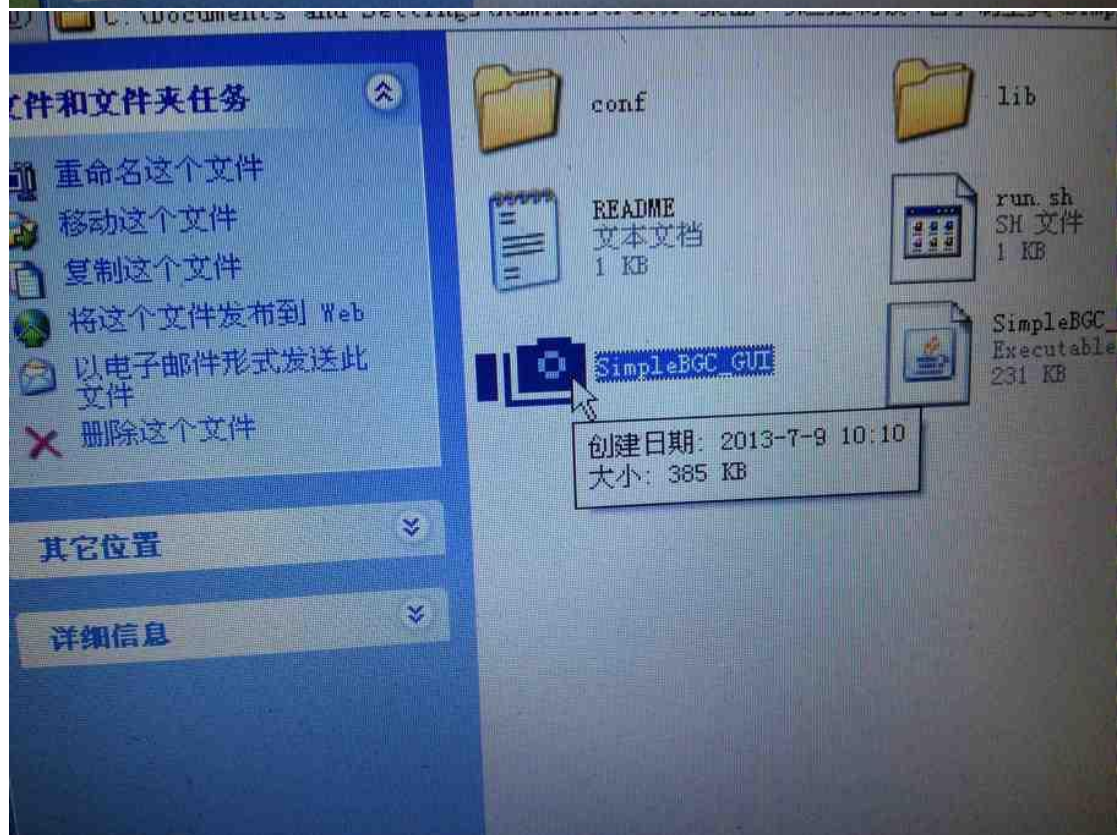
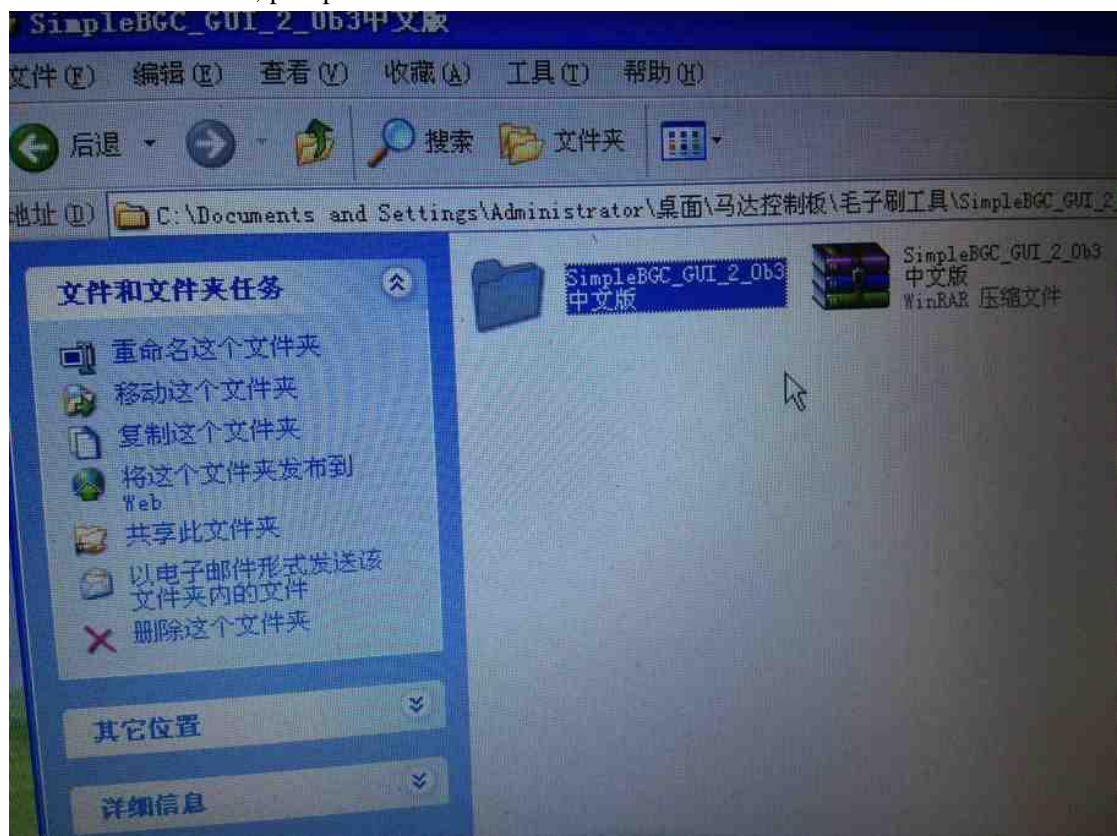
Manual for 98390

We use the Russian version software for V3 board.

1.How to connect the camera mount to the PC?



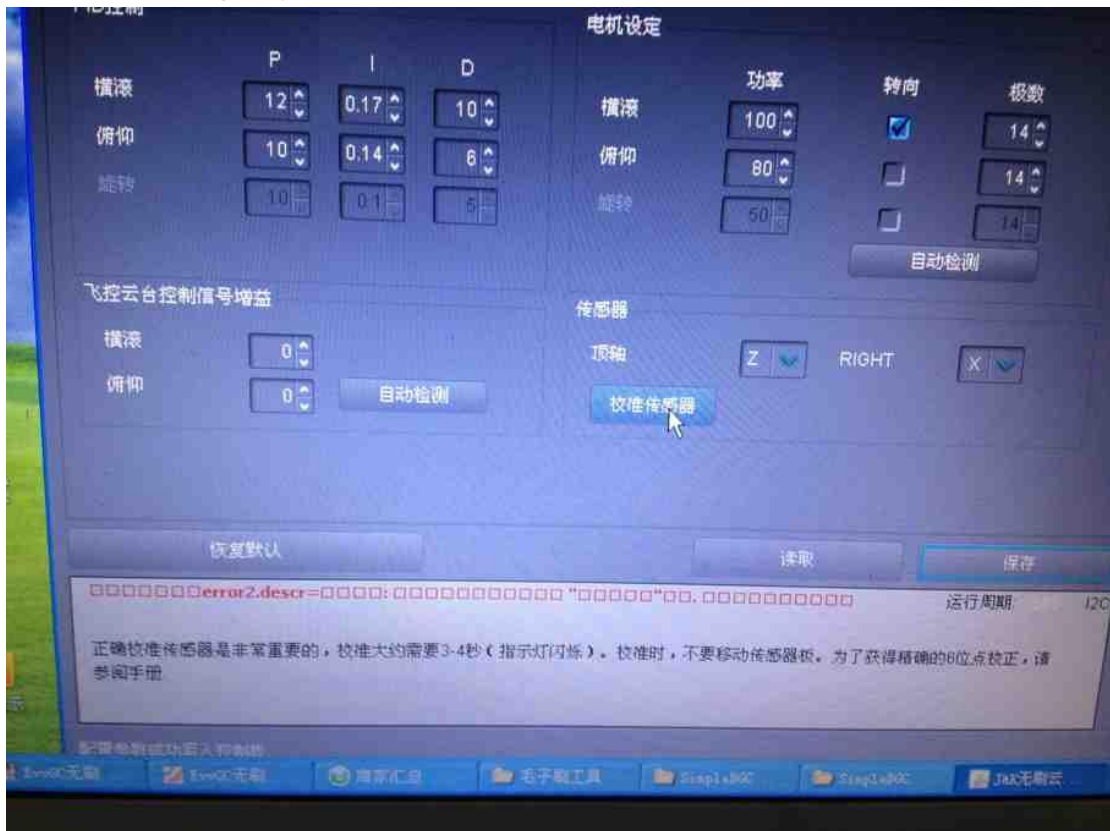
2. After it was connected, pls open the software to test the camera mount



3. Choose COM185 and click "connect"



4. This is the setting for your reference.





You can also try other firmwares:

1. sound code: [http://code.google.com/p/brushless-gimbal/downloads/detail?name=Brushless Gimbal 50x50mm V3.0.1.zip&can=2&q=](http://code.google.com/p/brushless-gimbal/downloads/detail?name=Brushless+Gimbal+50x50mm+V3.0.1.zip&can=2&q=)
2. for debugging software and firmware download:  
<http://code.google.com/p/brushless-gimbal/downloads/list>
3. computer driver download: <http://www.ftdichip.com/Drivers/VCP.htm>
4. Detailed information, please search the website:  
<http://code.google.com/p/brushless-gimbal/>