


# Anywhere

Quick start guide

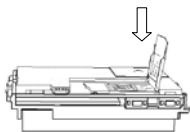
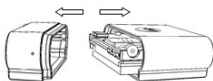
[Start here](#)

Thanks for choose our product. This Quick Start guide tells you how to set up your GPS Tracker.

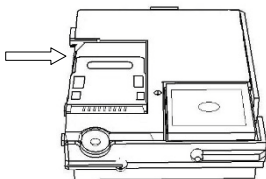
- Please charge 12hours at first use.
- Insert SIM card in right way. Please put the unit outside and make sure the trademark side facing up.
- Press  above 3 seconds , activation will be finished when the blue LED converted to one second flashes, SIM card Registration Successful, LED light was converted to three seconds blinking GPS positioned successfully. LED off in sleeping mode
- Confirm your SIM card have calling, send SMS, GPRS function.
- Confirm your SIM card have enough balance (money).
- Confirm your SIM card can show caller ID and don not use call forwarding function.

Now you can operate the function .Begin!

- How to put in SIM card.



- How to put in TF card.



## TF card\*.

Support 2GB TF card, over-the-air update, resume from break point cannot work without TF card.

## Over the air update.

Update can be finished by SMS ,and also the software on our website will be update occasionally.

## Breakpoint continuingly.

Date will be saved at SD card when in weak GPRS signal and will be send to platform automatically again when have GPRS signal.

## Password.

We suggest change the password and keep it in mind. Please contact with franchiser if you forgot it,

Unit only work with correct one.

## Authorization.

SMS will be send to Authorized number. Authorized number can send the command without password.

## Internet monitor.

### 1. Set APN.

APN stands for Access Point Name. For

example picture 1, China mobile "CMNET", send

SMS "123456apn cmnet" to the unit ; if APN have user

name and password, For example picture 2, Microcell ,

APN is internet, user name : fido , password : fido.



1



2

2. IP and port.

When APN setting succeed, send SMS "123456adminip 119.147.23.100 2337" , it will reply "ADMINIP ok!" . "2337" is port number.

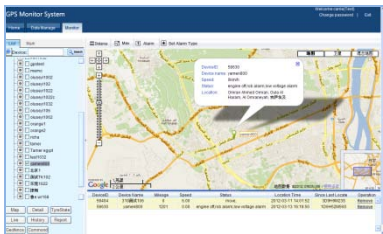
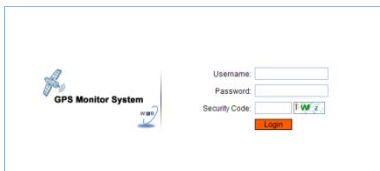
3. Data transmission.

Send SMS: "123456t010s\*\*\*n" to the unit, will reply" t010s\*\*\*n ok!" .Data will be transmissionto the platform every 10 seconds.



#### 4. Internet platform.

Please contact franchiser. They will supply you platform website, User name, Password and help you to add your unit into platform.



You can check more information about platform in CD-ROM.

Password.

Send SMS "123456password 000000" to unit ,will reply

"password 000000 ok!" .Notice : 123456=old

password,000000=new password.





One time.

- Using your mobile phone call the inside number of unit .it will hang up and reply to a real time positioning messages. Contents include: latitude, longitude, speed, date, battery, signal, IMEI number.
- Send SMS "123456smslinkone" to the unit, will reply message.



## Successive positioning.

Send SMS "123456t030s002n" to the unit, Will reply "t030s002n ok!" It will report the real time SMS at 30s interval for 2 times. Notice: s=second, minute, h=hour. The shortest interval time is 005s, the longest interval time is 255h; Reply the most times is 999n, Unlimited times is\*\*\*n.



## Authorization.

- Call the unit for 10 times and successful positioning. This number will be the default for authorized number.
- Send SMS "123456admin 15920033 XXX" to the unit, it will be authorized of this number. Only 5 numbers able to be authorization. If need cancel, send " 123456admin" .



## Monitor.

Send "123456monitor" to the unit, will reply " monitor ok!" , then call the unit to enter into the monitor mode .Send "123456tracker" to the unit when need to cancel , it will reply "tracker ok!" back into the positioning mode again.



## Traffic mode.

Send SMS "123456traffic 5" to the unit, will reply "traffic 5 ok!". 5 stands for the sensibility level, setting from 0 to 10. 0 means closing the function. When moving, the unit will send GPS data to monitor platform or mobile phone automatically every 30 seconds; when stay still, the unit will go to sleep. Send "123456traffic 0" when needs to cancel.



## Sensor alarm.

Send SMS "123456shake 5" to the unit,it will reply "shake 5 ok!". The unit will send alarm message to phone when shake. Send SMS "123456shake 0" when needs to cancel the function.Number 5 stands for the sensibility level, setting from 0 to 10. 0 means closing the function.Notice: This function cannot work when in traffic mode.



## Overspeed alarm.

SendsMS "123456speed 050" to the unit,it will reply

"SPEED ok!" . When the unit moves exceeding 50

km/h, the unit will send SMS alarm. When the speed is

no more than 50km/h, it will send alarm as well. Send

"123456speed 0" when needs to cancel. Notice:

Speed alarm is set at least 50km/h.



## Movement alarm.

When the unit stays immobile in a place for more than 3 minutes, send SMS "123456move 200" to the unit, it will reply "move 200 ok!". It will send alarm SMS when moves out of 200 meters. Send SMS "123456move 0" when needs to cancel.





## Geo fence.

Set Geo fence for the unit to restrict its movement within a district. The unit will send SMS to the authorized numbers when it breaches the district. If needs Send SMS "123456fence 22.589155N,113.827732E;22.559000N,113.897111E" .



## Total mileage calculation.

If you want to calculate the mileage, according to the following steps:

1. Send SMS "123456gprsdata 1" to the unit.
2. Send SMS "123456t010s\*\*\*n" to the unit.
3. Send SMS "123456km0" to the unit.
4. Send SMS "123456km ?" ,it will reply the mileage dates.



SOS.

Press the SOS for 3 second when dangerous. It will send " help me " to all the authorized numbers.



## Map link.

There are two formats: date format, map link format.

Send SMS "123456smslink 1" to the unit, it will reply

"smslink 1 ok" , then call the unit again, it will reply

map link, access to this website may view location

map. Send SMS "123456smslink 0" to the unit will

restore to date format.



The Googlelogo, GoogleMaps are trademarks of Google Inc.

## Time.

Default is Beijing time, if you want to Change time, send SMS "123456time zone -6.5" .Notice : "+" no need to write , "-" must write ; 6.5=6 : 30.



UDP/TCP.

Default is TCP , if you want to change into UDP , Send SMS "123456gprsmode 1" to the unit , if you want change back to TCP, send SMS "123456gprsmode 0" .



## Overtheairupdate\*.

We will update software, if you need update tracker,  
please install memory card (TF), and send SMS

“123456ldu,server=[http://www.cnjeo.com/down/vpj.  
bin,en=72](http://www.cnjeo.com/down/vpj.bin,en=72)” . After you receive three messages, it  
means updated successfully. Notice : Need about 5  
min to do updating.



## Status.

Send "123456status" to the unit , it will reply SMS.

Include: IMEI、 speed、 battery、 position state、 time、 IP、 APN、 Port etc.





## Version.

Send SMS "123456version" to the unit , it will reply version information.



Reset.

Send SMS "123456begin" to the unit, it will reply "begin ok!" , then unit will back to default settings.



## Product parameter

- Network: GSM/GPRS
- GSM/GPRS module: SIMCOM SIM900
- Band: 850/900/1800/1900Mhz
- Communication protocol: TCP/UDP
- CPU: ARM7
- GPS chip: SIRF3
- GPS sensitivity: -159dBm
- GPS accuracy: 5-20m
- Time To first fix Cold status 45s Hot status 1s
- Car charger: 12—24V input 5V output
- Wall charger: 110 - 220V input 5V output
- Battery: 3.7V 860mAh Li-ion battery
- Standby: 250hours
- Waterproof: IPX-8
- Storage Temp: -40°C to +85°C
- Operation Temp: -20°C to +55°C

More.

In addition, you can learn more information about our products in CD-ROM.