

Intelligent Alarm System



User Manual

Ver 12-3

Dear users,

Thank you for having selected the intelligent system. Please read through this manual before installation so as to operate properly.

The intelligent alarm system adopts the GSM network and Digital Signal Processing technology, and is widely used in security, such as protect your home, store, office, factory etc. It really realizes wireless alarm dealing and controlling remotely, convenient and flexible, and solves the limitation of wired data transmission in telephone and network. Perfect structure, convenient installation, easy operation with wireless remote controllers are designed for the idea of people-oriented, which will make you feel easy and comfortable while using this intelligent alarm system.

People is center, technology is first is our companys action rule. Customer satisfaction is our consistent pursuit. Perfect system, excellent services, sincere attitudes will bring you new enjoyment.

Contents

1. Description	-----	
1.1 Main functions	-----	
1.2 Specification	-----	
2. Structure	-----	
3. Installation and Operation	-----	
3.1 Installing the SIM card	-----	
3.2 The connection of wired detectors and speaker	-----	
3.3 Running	-----	
4. Pre-record alarming voice	-----	7
5. Programming by SMS command	-----	7
5.1 Programming 3 mobile phone numbers for SMS alarm	-----	
5.2 Programming 3 phone numbers for voice call alarm	-----	
5.3 Deleting alarm phone numbers	-----	9
5.4 Modifying the password of alarm host	-----	9
5.5 Arm/Disarm	-----	
5.6 Set delay alarm	-----	10
5.7 Modifying zones name	-----	10
5.8 Modifying installation address name	-----	10
5.9 Inquiring arm/disarm status	-----	10
5.10 Inquiring AC power status of alarm host	-----	10
5.11 Switchover 4 languages	-----	11
5.12 Programming independent arm	-----	11
5.13 Cancel independent arm	-----	11

6. Programming by phone keypad remotely	12
7. Operating steps	13
7.1 Arm/disarm by remote controller	13
7.2 Emergency alarm	14
7.3 External AC power failure alarm	14
7.4 Handling alarm	14
7.5 Arm/disarm and listen in remotely	15
8. Installation and operation cautions	15
9. How to add additional PIR movement sensor/dosensor	16
10. Encode table	20

1. Description

The alarm system adopts SMS data transmission and voice platform of GSM network to send control command and receive alarm message remotely. The system can be armed according to users requirements, when a signal is detected by sensors, the sensors will send alarm signal to alarm host immediately, then the alarm host will send alarm SMS to pre-set mobile phone numbers, and meanwhile dial its preset telephone/mobile phone numbers automatically. In addition, user can dial the alarm host to remote control the host, such as arm, disarm etc.

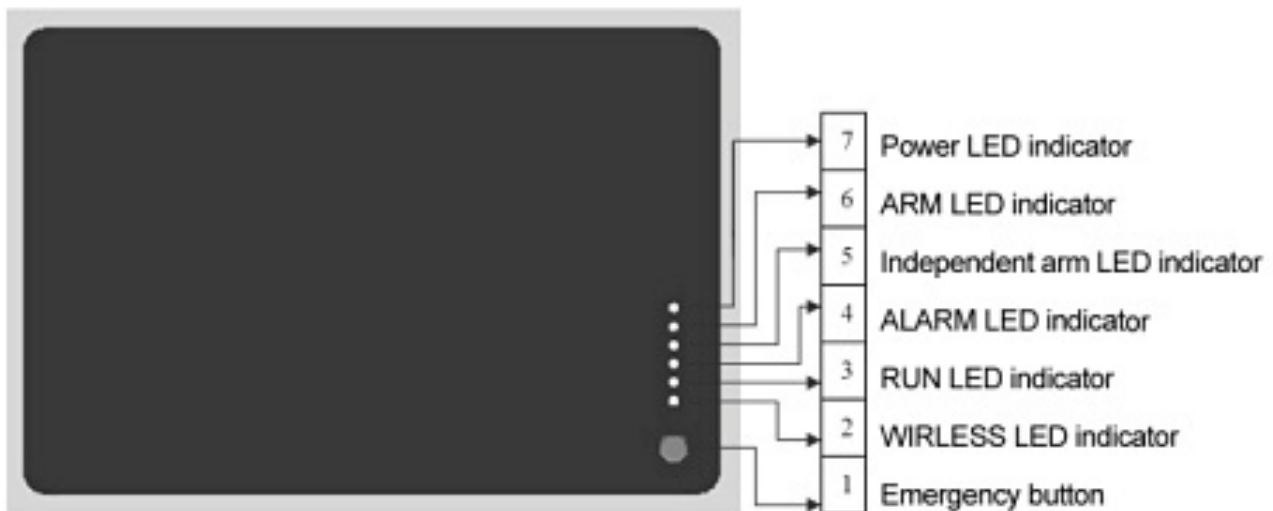
1.1 Main functions

- Whether send SMS or not when arm/disarm;
- Compatible with Android Apps & iOS Apps;
- Arm/disarm remotely by phone keypad/SMS command;
- Automatically send SMS to 3 preset phone numbers while alarming;
- Automatically call 3 preset phone numbers to start on-site listen in while alarming;
- Real-time report the alarm zone remotely by SMS and voice reminding;
- With user-friendly voice reminder while operating the alarm host;
- Support two-way communications;
- Built-in dedicated emergency alarm zone and fire alarm zone;
- Automatically SMS report and call alert while the AC power failed or recovered, automatically switch to backup battery ;
- Silence alert/sounds alert for optional;
- 10 seconds voice record.

1.2 Specification

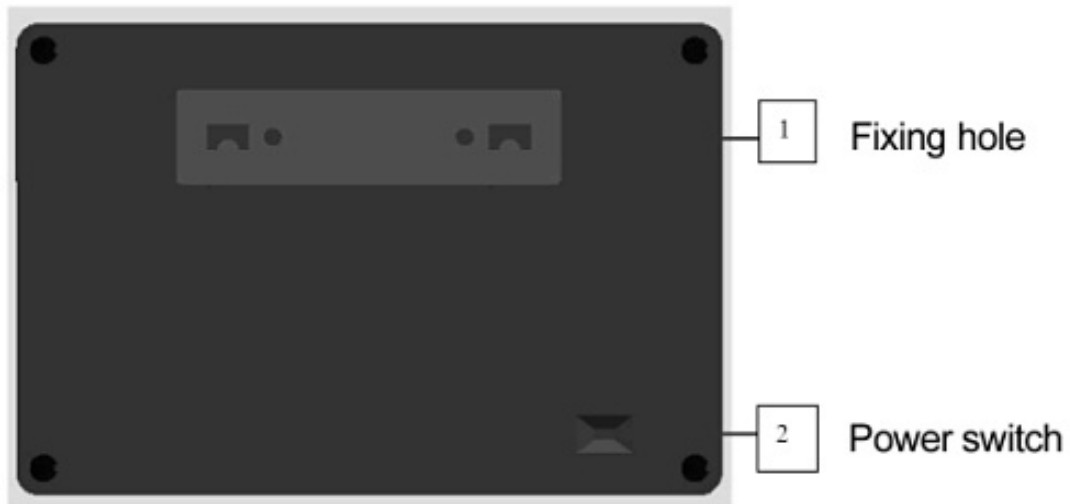
1. Wireless frequency: 315MHz/433MHz for optional
2. GSM frequency: 850/900/1800/1900MHz
3. Alarm response time ≤ 8 s (GSM signal in normal)
4. Power requirements: AC110V \sim 240V 50Hz/60Hz
Working consumption: < 0.6 W
Backup battery: DC7.4V/800mAh
Backup battery working hour ≥ 10 hours
5. Working condition temperature: ~ 20 °C humidity $\leq 95\%$ (non-condensation)
6. Size: 150mm (L) \times 100mm (W) \times 16mm (H)
7. Record time: 10s

2. Structure



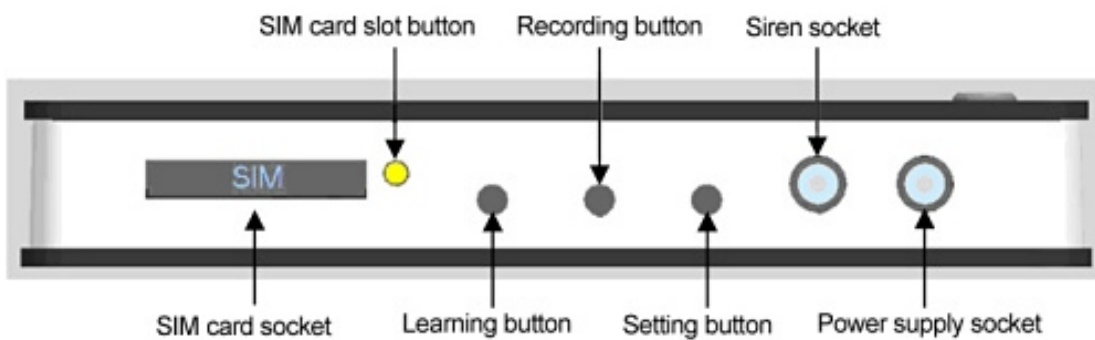
Shown as above:

1. Emergency button: used for emergency alarm
2. WIRELESS LED indicator: when receiving wireless signal from wireless sensor or remote controller, the LED will be on, otherwise is off.
3. RUN LED indicator: blinking every 2s when the GSM signal is normal, when the GSM signal is failure it blinks every 1s.
4. ALARM LED indicator: When there is an alarm or entering into setting status, it will be on; when there is no alarm or escaping the setting status, it will be off.
5. Independent arm LED indicator: When there is one zone in the independent arm status, the LED is on.
6. ARM LED indicator: After system armed, it will be on; it will be off when disarm.
7. Power LED indicator: External AC power is connected, the LED is on; external AC power is failure, the LED is off.



Shown as above:

1. Fixing hole: Use for fixing the alarm host;
2. Power switch: Switch to right is on, switch to left is off.



Shown as above:

1. SIM card socket
2. Learning button
3. Recording button
4. Setting button
5. Siren socket
6. Power supply socket
7. Press this button, the SIM card slot will pop out

Note: the learning button is for learning code alarm system.



Shown as above:

- 1、Recording MIC
- 2、Listen in MIC

3. Installation and operation

3.1 Installing the SIM card

The alarm host transmits alarm information by GSM SMS & voice platform, so you should prepare a SIM card before the installation. (If you use a new SIM card, make sure the SIM card can send SMS and make calls normally.)

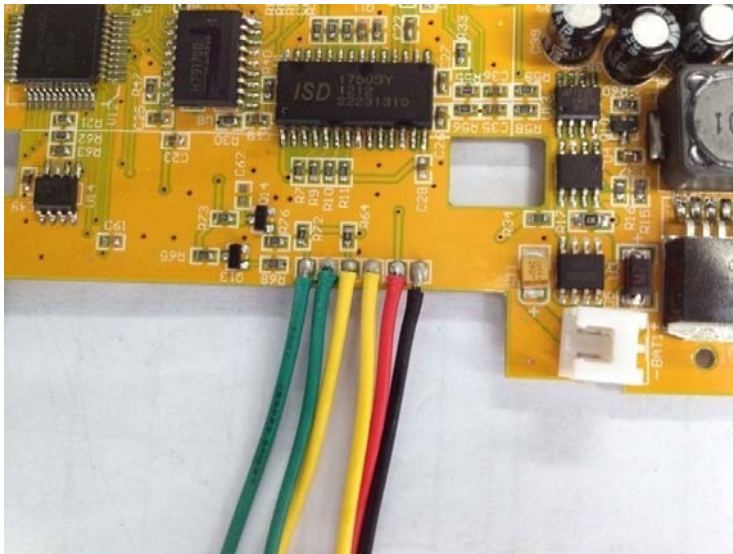
Notes: Please turn off the power before inserting SIM card and make sure the direction is correct.

3.2 The connection of wired detectors and speaker

The alarm host is configured with 2 wired alarm zones and two-way communication functions.

The wiring method is as following:

1) After opening the host's case with screwdriver, you will see 6 wires inside the host. Shown as below:



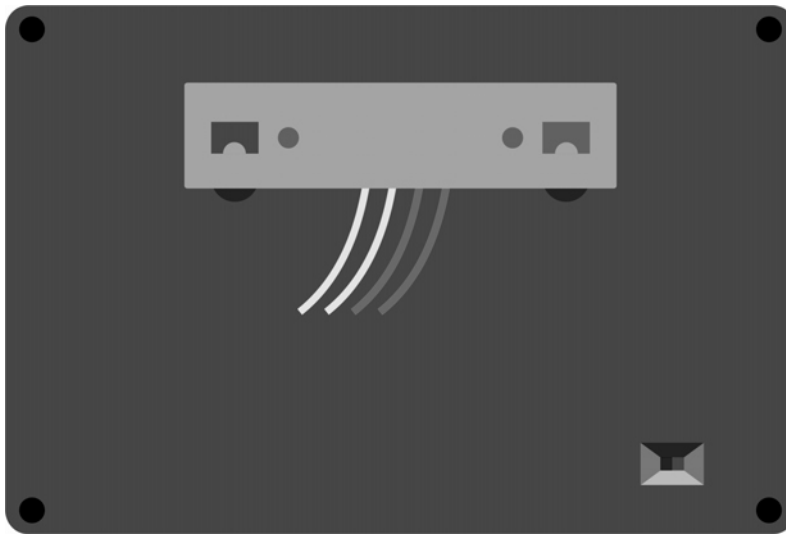
Of which:

Red wire: the anode of the speaker; black wire: the cathode of the speaker.

The two yellow wires are for wired zone 1;

The two green wires are for wired zone 2;

2) Draw out these wires of wired detectors & speakers from the back of the alarm host.
Shown as following:



3.3 Running

Make sure the power supply well connected, and then switch on the power, the ALARM, ARM, and POWER LED indicators will be on, the RUN LED indicator will blink. About 25s later, the host will get into initialization and GSM network searching mode, after beep sounds, the alarm system will enter into normally working status. At this moment ALARM/ARM LED indicator will be off, the RUN LED indicator will keep blinking every 2s/time.

Notes: If the RUN indicator keeps on or keeps off, it means that the alarm host has searched the GSM faults automatically.

4. Pre-record alarm voice

During the host working status, press REC button, the host will make di sound, and then it begins to record for 10 seconds. It will make di, di sounds after finishing the recording. If you've connected the speaker before, the host will broadcast your recorded message automatically.

Note: Message should be brief. For example, This is Home Alarm, intrusion into your house.

5. Programming by SMS Command

5.1 Programming 3 mobile phone numbers for SMS alarm

Input SMS: 4 digits password + DD + serial number + mobile phone number.

Example: The host's password is 1234; programming mobile phone number 13800000000 as the first SMS alarm phone number. Send SMS to alarm host: ~~DD4~~ 13800000000

After programming successfully, it will send the setting message to the first preset phone number.

Note: The serial number shows alarm sequence (must be 1, 2, 3), DD is the fixed command.

5.2 Programming 3 phone numbers for voice calling alarm

Input SMS: 4 digits password + DD + serial number + phone/mobile phone numbers

Example: The host's password is 1234; programming 13800000000 as the first voice calling alarm phone number.

Send SMS: 1234 DD413800000000

Note: The serial number shows alarm sequence (must be 4, 5, 6), DD is the fixed command.

5.3 Deleting alarm phone numbers

Input SMS: 4 digits password + DD + serial number

Example: The hosts password is 1234. If you want to delete the first alarm phone number, Send SMS: 1234 DD1

Note: The serial number shows alarm sequence (must be 1, 2, 3, 4, 5, 6)

5.4 Modifying password of alarm host

Input SMS: 4 digits password + DD + 7 + 4 digits new password

Example: The factory default password is 1234. If you want to program 5678 as new password,

Send SMS: 1234 DD7 5678

After setting successfully, the new password will be sent to the first SMS alarm phone number.

5.5 Arm/Disarm

Arm by SMS: 4 digits password + A1

Disarm by SMS: 4 digits password + A2

Example: The hosts password is 1234. If you want to program the host in arm mode by remotely control, then input SMS: 1234A1.

5.6 Set delay alarm

Input SMS: 4 digits password+DY+digits(0, 1, 2, 3, 4)

0 is delay alarm for 0s, 1 is delay alarm for 15s, 2 is delay alarm for 30s, 3 is delay alarm for 45s, 4 is delay alarm for 60s.

5.7 Modifying zones name

Input SMS: 4 digits password + DM + zones code (2 digits) + New zones name

Reply SMS: New zones name.

Example: The hosts password is 1234. If you want to the modify the name of zone 06 into **our bedroom PIR Alarm**

Send SMS: 1234DM06 **Our bedroom PIR Alarm** .

Note: The new name should be less than **24 characters**.

Zones code in 2 digits: 01 to 11, of which zone 11 is the emergency zone, and zone 12 is default as fire alarm zone

5.8 Modifying the installation address name

Input SMS: 4 digits password+ **DM00** ? user defined name

After modifying successfully, the modified name will be sent to the preset 3 SMS alarm mobile phone numbers.

5.9 Inquiring arm/disarm status

Send SMS: 4 digits password + W1

Reply SMS: The hosts arm/disarm status

5.10 Inquiring AC power status of alarm host

Input SMS: 4 digits password + W2

Reply SMS: hosts AC power status

5. 11 Switchover 4 Languages

Input SMS: 4 digits password + LG? series number

Notes: The series number stands for 1.2.3.4, of which 1 stands for English, 2 stands for Chinese, 3 stands for Russian, 4 stands for Spanish.

After setting successfully, you will get 3 SMS reply for switching to related language.

5. 12 Programming independent arm

When the one zone in independent arm status, only SMS command can control the independent zone, doesn't accept any other modes control.

Programming alarm zone as the independent zone, input SMS: 4 digits password + 摺A+ zone series number

Notes: zone series number stands for 10 zones (from zone 01 to zone10), it is allow to program multi-zones as independent zones.

Example: If you want to program zone 1, 3, 4 independent zones, the host password is 1234, then you can send SMS to the alarm host, input SMS: 1234AA01, 03, 04

Notes: Between each zone, you must use a comma, for separating.

SMS reply: the status of each zone, of which A stands for the zone has been in status of independent zone.

5. 13 Cancel independent arm

When the zone in the independent arm status, only SMS command can control the independent zone, doesn't accept any other modes control. So we can use SMS to cancel

the independent arm, input SMS:

4 digits password + 撤D + Zone series number

Notes: The zone series number stands for 10 zones (from zone01 to zone 10), you can cancel multi-independent zones one time.

Example: If you want to cancel independent zone 1, 3, 4, the password is 1234, then you may send SMS to alarm host: 1234AD01,03,04

Please remember that you should use comma , for separating each zone.

6. Programming by phone keypad remotely

User can use any telephone or mobile phone to dial the phone number of the host, the host will automatically get through after 15 seconds detecting and remind you of inputting password with voice. If the entered password is wrong for 3 times, the host will hang up phone automatically; if the entered password is correct, you will hear voice reminder, one arm, press two disarm. Meanwhile, remote listen in will run automatically. Press *, you will hear di, di sounds from host to indicate it has entered into setting status, then you can continue the following steps.

Note: Every time when you press the phone keyboard, the host will make click sounds. If you do not hear click sounds, this means your operation is unsuccessful, you should press it again.

You can press * to cancel the numbers which you have already inputted (before pressing *).

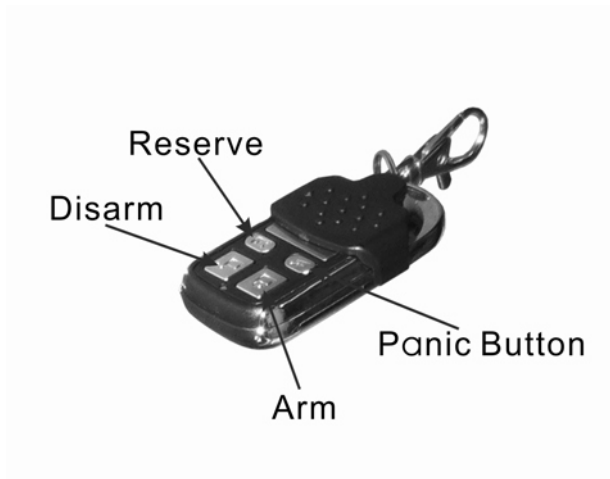
- 1) Programming mobile phone numbers for SMS alarm
- 2) Programming mobile phone or telephone numbers for alarm call
- 3) Modifying password of the host



- 4) Modifying new ID of the host
- 5) Programming alarm host whether reply arm or disarm SMS or not
- 6) Choosing open/close alarm of hardwire zone contact
- 7) Exiting setting status of the alarm host

The setting steps by phone are the same as by wireless keyboard. Please do as corresponding operation method by wireless keyboard.


7. Operation steps

7.1 Arm/disarmed by remote controller



- a. Press the button  on the remote controller, the host makes di, di sound and the ARM LED indicator will blink, after 30 seconds, it will automatically enter into ARM mode and the ARM LED indicator will be on.
- b. Press the button  can disarm, the host makes di, di sound, and ARM LED indicator will be off, alarm host will be get into disarm mode.

7.2 Emergency alarm

When an emergency alarm occurs, press the button  or the panic button on the alarm host, then the alarm host will get into emergency alarm mode immediately, then it automatically start the siren for 90 seconds to inform the neighbors. At the same time, the system will automatically send the SMS of Emergency alarm and dial the pre-set phone numbers cycled for three times.

7.3 External AC power failure alarm

When the system checked out that there is something wrong with the external power or the external power is off for more than 2 seconds, it will enter into alarm status immediately. At the same time, the system will automatically send the SMS of External power failed and dial the pre-defined phone numbers cycled for three times.

When the power supply restored to normal, the system will stop alarming immediately and send the SMS of external power OK.

7.4 Handling Alarm

When an alarm occurs, the system will start the siren for 90 seconds to inform the neighbors. At the same time, the system will automatically send SMS and dial the pre-set phone numbers.

When any phone is answered, the system will play the pre-recorded voice and listen in at site. At this moment, the user presses the phone keypad:

- ?-----arm
- ?-----disarm
- ?-----start the siren remotely

? 摠厖厖. switch off siren

If the phone line is busy or cant get through,system will auto-dial the next phone number circularly till the one of them is answered. If nobody answers the phone, the system will stop dialing after auto-dialing circularly for three times

Note: When you are listening in at site, the host is still on the arm mode. If any detector triggered again, the host will broadcast the zone numbers to you.

7.5 Arm/disarm and listen in remotely

You can use any telephone or mobile phone to dial the phone number of the host, the host will automatically get through after 15 seconds detecting and remind you of inputting password with voice. If the entered password is wrong for 3 times, the host will hang up phone automatically; if the entering password is right, you will hear sounds: Press one to press two disarm? Meanwhile, remote listen in will run automatically. Then press phone keypad:

?----- arm

?----- disarm

?-----start siren

? 摠厖厖.. switch off siren

* 摠厖厖.. the host gets into setting mode.

If the user hangs up the phone, the host will automatically terminate the operation.

8. Operation Cautions

- a. Make sure the equipments have no water.

- b. Install the system in a hidden place, but with normal GSM network.
- c. Turn off the power supply before insert/take out the SIM card.
- d. Have a hard connection to the main power supply and provide good heat dissipation.
- e. The alarm host will get into normal running status about 25秒 later.
- f. Check all the detectors and their batteries in time and change them when power is low.
- g. Please don't install the PIR motion sensors face to the window directly for avoid sunshine.
- h. Don't install the system close to the things which generate strong interference, such as TV set and computer.
- i. Inspect the GSM alarm system timely.
- j. This product is designed for the indoor use rather than outdoor use.
- k. Inspect the SIM card in the alarm host (GSM signal is ok, and the balance of SIM card is enough, etc)

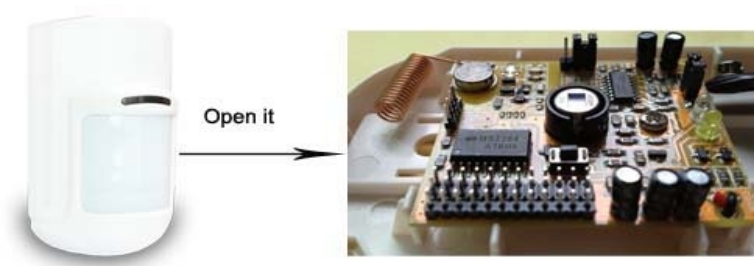
9. How to add additional PIR movement sensors?



Wireless PIR movement sensor

Tips: Each wireless zone can work with unlimited wireless detectors.

Firstly, please open the wireless PIR movement sensor, you will see the internal structure of the PIR sensor, same as below picture shown;



You will see some pins, which is from A7 to A0, and from D3 to D0.

A7 to A0 is address code, which should correspond with alarm host wireless address and

D3 to D0 is data code for setting defence zone.

Which position you need to put jumpers so that it can correspond with alarm host jumper code & defence zone jumper code ?

We should know the regulation that which position means 0, which position means 1, which position means 2. There are three columns pins, L N H, when you put a jumper to L column and N column, it stands for 0. When you put a jumpers to N column and H column, it stands for 1. If you did not put any jumpers, it stands from 2.

For example the wireless address code is 2202212 and make the wireless PIR sensor to zone 1.

1) Check the wireless address code on the back side of the alarm host (different alarm host has different wireless address.) address:

2202212 (D7 to D0)

2) Check the zone 组 code in the last page of operation manual :

Zone1 from D3 to D0: **1010**

3) Please using jumpers to connect the pins. From A7 to A0 and then from D3 to D0



Jumpers



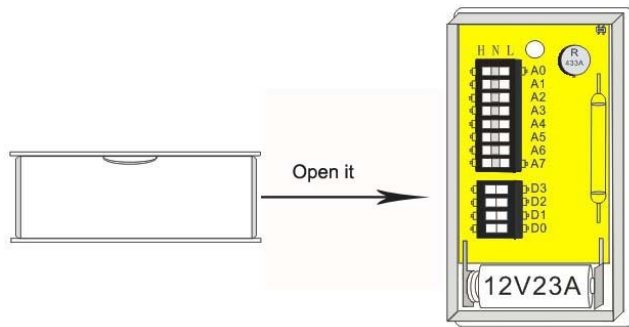
Notes: The Resistance is 4.7 OHM.

After finishing setting, please test the new adding PIR motion sensors.

Kindly tips:

By using the same method, add additional door sensor, smoke sensor, glass breaking sensors etc.

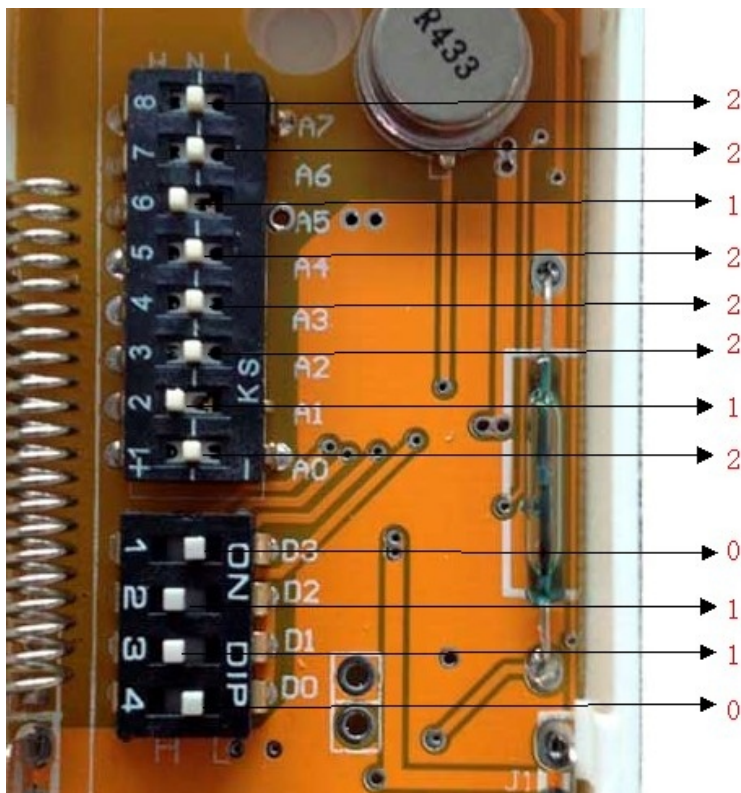
How to add additional wireless door sensor?



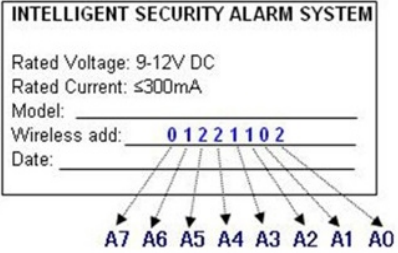
1) Open the door sensor

Put the switch from A7 to A0 for wireless code and defense zone code from D3 to D0.

Notes:from the table (item 10), we know the 0110 is zone 2.



10. Encode method

Name		Wireless address code from A0 to A7 (1~8)	D0 (13)	D1 (12)	D2 (11)	D3 (10)
Alarm host		Series number from right to left A0~A7	NC	NC	NC	NC
Remote controller			NC	NC	NC	NC
wireless detectors	Zone 01		1	0	1	0
	Zone 02		0	1	1	0
	Zone 03		1	1	1	0
	Zone 04		1	0	0	1
	Zone 05		0	1	0	1
	Zone 06		1	1	0	1
	Zone 07		0	0	1	1
	Zone 08		1	0	1	1
	Zone 09		0	1	1	1
	Zone 10		1	1	1	1
	Panic button		0	0	1	0
	Fire zone		1	1	0	0

Remark: A0~A7 & D0~D3 use jumpers or tin soldering for connecting the pins.
 Connect N & H stands for “1”, Connect N & L stands for “0”, no connection stands for “2”