

## Thank you for choosing HUAWEI E5331 Mobile Wi-Fi

This guide briefly describes the functions of the E5331 Mobile Wi-Fi.

**Copyright © Huawei Technologies Co., Ltd. 2012. All rights reserved.**

THIS DOCUMENT IS FOR INFORMATION PURPOSE ONLY, AND DOES NOT CONSTITUTE ANY KIND OF WARRANTIES.

# Getting to Know the HUAWEI E5331 Mobile Wi-Fi

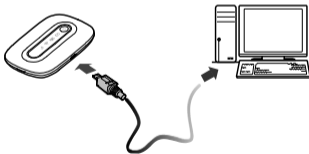
## Connection Scenarios

A Wi-Fi device or computer can be connected to the Internet through the Mobile Wi-Fi. The actual connection procedure depends on the operating system of the Wi-Fi device or computer. The connection scenarios illustrated here are for your reference.

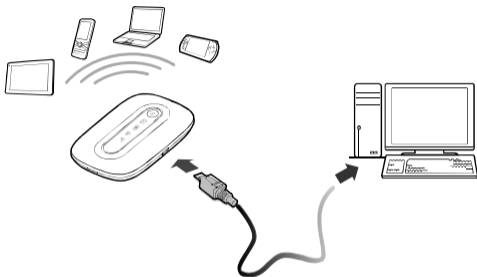
### Scenario 1: Multi-device access via Wi-Fi



### Scenario 2: One-device access via USB



### Scenario 3: Multi-device access via Wi-Fi and USB at the same time

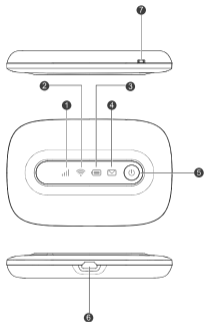


## Appearance

No.	Item
1	Signal indicator
2	Wi-Fi indicator
3	Battery indicator
4	SMS indicator
5	Power button
6	USB port(Micro USB Type B)
7	Strap hole

### Note:

Wi-Fi: Wireless fidelity



## Indicator

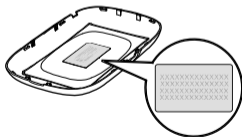
Indicator	Status	Color	Description	
Signal	on	green	The signal is strong.	
		orange	The signal is weak.	
		red	There is no signal, the SIM card does not exist, or the PIN code is not verified.	
Wi-Fi	on	green	Wi-Fi is enabled.	
	off	/	Wi-Fi is disabled.	
Battery	on	green	on	The battery level is normal.
			blinking	The battery is charging.
		red	on	The battery level is low.
SMS	on	green	on	There are unread messages.
			blinking	The inbox is full.
	off	/	There is no unread message.	

**Caution:** If no operation is performed on the Mobile WiFi within a preset period, only the battery indicator displays. The status of the battery indicator is as follows:

Indicator	Status	Color	Description
Battery	on	green	Slowly blinking The battery level is normal.
		red	Slowly blinking The battery level is low.

### SSID and Wireless Network key

To connect a Wi-Fi device to your Mobile Wi-Fi, an SSID and a wireless network key are required. The SSID and wireless network key label can be found on the inside of the back cover and on the keepsake card that came with the Mobile Wi-Fi.



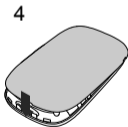
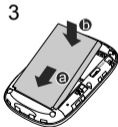
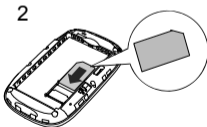
## Before You Start

### Installing the SIM Card and the Battery

**Caution:** Do not use any SIM card that is not standard or is incompatible with the Mobile WiFi. Otherwise, the Mobile WiFi may be damaged.



Insert the SIM card in the card slot. Be sure that the SIM card is facing in the right direction, as shown in figure 2, and then slide the SIM card into the slot.



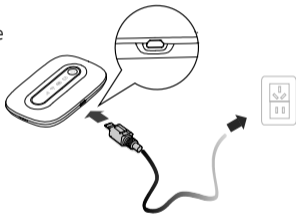
## Charging the Battery

**Note:** If the battery has not been used for a long time, it must be charged first.

### Method 1: Using the charger

**Caution:**

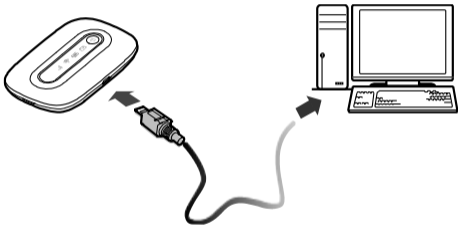
- Only use chargers compatible with the Mobile WiFi and provided by a designated manufacturer. Use of an incompatible charger or one from an unknown manufacturer may cause the Mobile WiFi to malfunction, fail, or could even cause a fire. Such use voids all warranties, whether expressed or implied, on the product.





## Method 2: Connecting to a PC for charging


Connect the Mobile WiFi to a PC using a compatible data cable.




## Accessing the Internet via Wi-Fi Connection

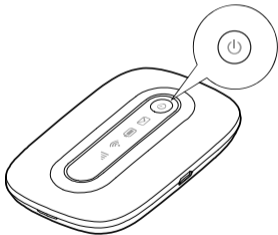
**Note:** By default, management parameters are preset on the Mobile WiFi according to the requirements of the service provider. Follow the steps below to quickly access the Internet. For the details about how to set management parameters, see help on the web management page.

### Step1: Power on the Mobile WiFi

Press and hold  until the indicators display.  
The Mobile WiFi is powered on.

**Note:**

- In order to access to the network successfully, make sure the signal indicator and the Wi-Fi indicator are on green.
- Press and hold  to power off the Mobile WiFi.



## Step2: Establish a Wi-Fi Connection (Take a computer with Windows XP operating system as an example)

1. Make sure that the Wi-Fi function of the Mobile Wi-Fi and the computer is enabled.
2. Select **Start > Control Panel > Network Connections > Wireless Network Connection**.  
**Note:** To set up a Wi-Fi connection, the PC must have a wireless network adapter installed. If **Wireless Network Connection** is displayed, a wireless network adapter is available. Otherwise, check to make sure you have a wireless network adapter installed.
3. Click **View available wireless networks** to display a list of wireless networks available.
4. Select a network indicated by the SSID of the Mobile WiFi, find the default SSID and wireless network key on the back cover of the Mobile WiFi, and then click **Connect**.

### **Note:**

- If the encryption parameter is already set for the Mobile WiFi, the **Wireless Network Connection** dialogbox is displayed. Enter the wireless network key in the dialog box.
5. Wait until the wireless connection icon is displayed in the status area in the lower right corner of the PC screen.

### Step3: Access the Internet

After you establish a Wi-Fi connection successfully, you can access the Internet using the following modes.

Mode	Operations
Auto	After the Mobile WiFi is powered on, it will connect to the Internet automatically. If there is no data transmission over a period of time, the Mobile WiFi automatically terminates the Internet connection.
Manual	Launch the web management page and follow the prompts to connect to or disconnect from the network.

**Note:**

- Launch the web management page to select the mode for accessing the Internet.
- You can choose whether to enable the Mobile WiFi to connect to the Internet automatically even while you are roaming. If this function is disabled, the Mobile WiFi automatically disconnects from the Internet while you are roaming. To access the Internet, set up a connection manually.

## Accessing the Web Management Page

1. Make sure that the connection between the Mobile WiFi and the client is a proper one.
2. Start the Internet browser and enter <http://3.home> or <http://192.168.1.1> in the address bar.
3. Enter the password and log in to the web management page.

**Note:** The default password is **admin**.

## Daily Use

### Power Saving Mode

If no operation is performed on the Mobile WiFi within a preset period, it will go to the standby mode. In this mode, the battery indicator blinks slowly in green, and the other indicators are off.

If the Mobile WiFi is powered by the battery only, choose whether to enable the Mobile WiFi to turn off Wi-Fi automatically. If this function is enabled and no Wi-Fi devices access the Mobile WiFi for a preset period, the Mobile WiFi turns off Wi-Fi automatically. You can press any key to turn on Wi-Fi again.

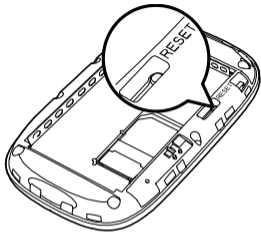
### Validating the PIN Code

If PIN code protection is enabled, log in to the web management page and follow the prompts to enter the correct PIN code. Both PIN and PUK are delivered with the SIM card. For details, consult your service provider.

## Restoring Factory Defaults

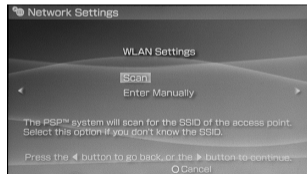
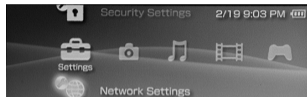
If you forget the changes you have made to some parameters, you may restore factory defaults and reconfigure the Mobile WiFi. To restore the factory defaults, press and hold the **RESET** button until all the indicators are off. All factory default settings are successfully restored.

**Note:** Restoring factory defaults deletes all personal configuration settings and restores all web-based management settings and parameters to their default values.



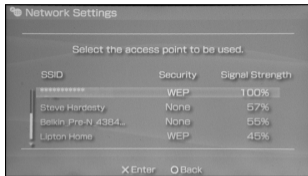
## Example 1: Wi-Fi Connection to Game Machine (Sony PSP)

1. Turn on the PSP WLAN switch.
2. Select **Settings** > **Network Settings**.
3. Select **Infrastructure Mode** to connect to your local Wi-Fi access point.
4. Select **New Connection** to specify an easy to remember connection name.
5. Select **Scan** to detect all networks within range. The access point list is displayed.
6. Select a network indicated by the SSID of the Mobile WiFi. First press the ► button of your game machine to confirm the SSID and then press it again to input the wireless network key.





- **SSID:** The Wi-Fi name of the Mobile WiFi.
  - **WEP:** The wireless network key of the Mobile WiFi.
  - The default SSID and wireless network key label are affixed to the Mobile WiFi.
7. Press the ► button of your game machine to continue, and then press the X button to save the settings.
  8. Select **Test Connection** to check the connection.
  9. Go to **Internet Browser**.



## Example 2: Wi-Fi Connection to a Smart Phone (iPhone)

1. Select **Settings** > **Wi-Fi**, and then turn on Wi-Fi.
2. Automatically detect the networks in range and display the access point list.
3. Select a network indicated by the SSID of the Mobile WiFi.
4. If necessary, enter a password and tap **Join**. (Networks requiring a password appear with a lock icon.)

**Note:** Some Wi-Fi clients such as iTouch, PS3 and NDSi can also access the Internet via the Mobile WiFi. For details, see the user guides of the Wi-Fi clients.



## Tips

Place your Mobile Wi-Fi where you get the strongest signal. The more windows a room has, the better the signal and upstairs will generally get a better signal. You can then be online wherever you like nearby.

If the Mobile WiFi is placed in an environment with poor ventilation, it may overheat after extended use. When the Mobile WiFi overheats, it will switch off and disconnect from the network automatically to protect itself. If this happens, place the Mobile WiFi in a well-ventilated location, then restart the Mobile WiFi.

If you are experiencing difficulties using the Mobile WiFi, try the following:

- See help on the web management page.
- Restart the Mobile WiFi.
- Restore the factory defaults.
- Contact your service provider.

## Frequently Asked Questions (FAQ)

### What can I do if the Client cannot access the Internet?

5. Check and ensure that the Client is connected to the Mobile Wi-Fi properly.
6. Check the power status to ensure that the Mobile Wi-Fi is powered on.
7. Check the signal strength to ensure that the area is covered by the network.
8. Check that the network mode is correct. For details about network modes, see **Mobile Network Settings** on the management page.
9. You must configure the correct peer-peer protocol (PPP) user name and PPP password when you access the Internet through the Mobile Wi-Fi. Check whether the user name and the password are correct, and see **Profile Management** on the management page for details.
10. If the DHCP server is disabled and the Client obtains the IP address dynamically, the device cannot access the Internet either. In this case, you need to change the mode to manually assign an IP address. See **DHCP Settings** on the management page.

11. Check that the network adapter of your Client runs properly.
12. If the problem still persists, please consult you network operator.

### **What can I do if the Client cannot access the WLAN?**

13. If there are interferences or shields near the Mobile Wi-Fi, you can adjust the position of the Mobile Wi-Fi.
14. Check and record the following settings of your Client and your Mobile Wi-Fi: SSID, WEP type, and key. The SSID of the Client must be **ANY** or the same as that of the Mobile Wi-Fi. The WEP type and key of the Client must be the same as that of the Mobile Wi-Fi. Otherwise, you need to change the settings.
15. Check whether the WLAN MAC filter function is enabled on the Mobile Wi-Fi. If the function is enabled, ensure that all relevant parameters are set correctly. See **WLAN MAC Filter** on the web management page for more information.

## What can I do if I forgot the default IP address of the management page?

Restore the factory defaults and enter <http://192.168.1.1> in the address bar.

Version: V100R001\_01 Part Number: 31010JKE