

# PORTABLE LED TV

## **USER'S MANUAL**



Please read this User's Manual carefully before use



# Contents

Contents .....	- 1 -
Notice and Safety Information .....	- 2 -
Function Introduction .....	- 3 -
Keys Function and Panel Instruction .....	- 4 -
Remote Control Function and Instructions .....	- 5 -
Basic Function Operation .....	- 7 -
<b>PANEL SETTING</b> .....	- 8 -
System Setup .....	- 8 -
<b>Mp3</b> Transcription and Multi Media Function .....	-11-
AV OUT (Signal to TV).....	-13-
TV player Parameter. ....	-14-

Note: FM / USB / Card reader / AV output functions are optional  
Built-in Battery is optional

# Notice and Safety Information

## 1. User notice

After buying the TV player, please read the operations and other instruction of user manual carefully, the incorrect use will cause the damage of health and loose of wealth.

## 2. Inspection

Check the crust and power adapter (especially the parts of the existence of damage.) mark part of internal there danger of voltage, current and enough.

## 3. Repair

In order to avoid the electric shock, please use wide blade plug to match with wide groove connector and make sure the secure connection. So all repair issue, please contact technical service center. Without technical service allowed, don't repair the TV player and spare parts.

## 4. Earphone

Adjust the volume in the middle during use of the earphone. . It may damage ear when listening to high volume music for a long time.

## 5. Far away from liquid

Please sure TV player and spare parts far away from liquid, don't put it in such environment, such as vase beside. If the TV player has liquid inside, it will cause electric shock.

## 6. Far away from heating

TV player must far away from heat, such as warm-air blower, induction cooker and so on.

## 7. Avoid to thunder

Do not use TV player in the thunder and lightning conditions.

## 8. LCD Screen

Do not drop, impact, scratch LCD screen, or do not put too heavy

goods on the TV player.

Note: avoid of the liquid of LCD screen touch body directly, when it was broken, the liquid has touched the skin, please wash your skin by mass water at least 15 minutes

### **9. Charger (Battery is optional)**

Use the power wire, charge and battery in the accessory box, do not use other model of parts. Make sure the charge plug suit for the proper AC. Avoid of electric shock, please use the wide plug suit for socket, and connect tightly.

### **10. Battery and charging (Battery is optional)**

Please put the TV player connect DC charge, the TV player will charge by itself.

## **Function Introduction**

1. High resolution color TFT LCD full screen display
2. Super electronic shock resistance
3. TV receiving function (PAL/NTSC/SECAM system) (Optional)
4. Built –in super power polymer lithium battery for up to 2 hours continue playing (Battery is optional)
5. Built –in DOLBY decoder supporting MPEG-4 video decoding
6. Support USB, SD/MMC (optional)
7. Support full functions control remote, easily to operate
8. Support MP4、MP3、WMA、RMVB、AVI、VOB、DIVX、JPEG formats.
9. Switch regulated power supply adapter AC100~240V
10. Personalize adjustment of TFT display
11. Fine ultra-thin design, suit for your better life
12. FM Radio function and TXT Reader function are optional
13. AV input/output functions (AV output function is optional)

## Keys Function and Panel Instruction

Note: different model of buttons panels different, not necessarily all the functions that contains the following keys.

### Keys function instruction

1	CH+	Short time press "channel +" can realize channel add function.
2	CH-	Short time press "channel -" can realize channel minus function .
3	VOL-	Short time press "volume -" can realize the volume decreases function.
4	VOL+	Short time press "volume +" can realize the volume increase function.
5	MODE	Enter different modes.
6	◀◀	In TV player playback, can retreat quickly, in order to search for specific target broadcast.
7	▶▶	In TV player playback, can quickly into play to search for specific objectives.
8	◀◀	In TV player playback, can press on a paragraph or last program, to search for specific objectives.
9	▶▶	In TV player playback, can press a paragraph or the next program, to search for specific objectives;.
10	▶	Short time press "play/pause" can play/pause functions switch; Press this button can confirm select menu content or start playing programs; Meanwhile compound in "Settings" menu state the function. OK confirm
11	LCD/⏻	Short time press " LCD/⏻ " backlight function can realize shut out.

## Interfaces with lights:

1	ANT	Match machine antenna or cable TV signal input.
2	DC-IN	Power input seats. Note: when not in use, please draw power DC adapter, and will power adapter plucked from the socket.
3	ON/OFF	The power switch. Note: when not in use, please dial shut OFF 'to'.
4	AV IN	External video signal input
5	AV OUT	This machine video signal output
6	Ω EARPHONE	Headset input or output/external earphone
7	SD/MMC	SD/MMC Card socket
8	USB socket	USB Equipment socket

## Remote Control Function and Instructions

1	POWER	Power of or power for LCD.
2	LCD MENU	Press this button can appear LCD Settings menu, short pressing the "menu" button pop-up image parameters function.
3	MODE	Switch different modes.
4	▲	In "Settings" menu state the function of upward.
5	◀	In "Settings" menu state the function of left.
6	ENTER	Confirm selected function.
7	▶	In "Settings" menu state to the right of the function.
8	SD/USB/ SEARCH	Test SD/USB devices, searching programs.

9	▼	In "Settings" menu state the function of down.
10	MUTE	Open/close the trumpet sound output cabin machine, note: AV output don't mute.
11	■	Press this button to play and stop playback on time.
12	▶	Press this button to enter play state, then press this button to suspend play.
13	▶▶	In TV player playback, backward quickly.
14	◀◀	In TV player playback, but fast forward.
15	◀◀	In TV player playback, can press on a paragraph or last program, to search for specific goals.
16	▶▶	In TV player playback, can press a paragraph or the next program, to search for specific goals.
17	CH+	TV condition with "for" channel can be realized with feature.
18	CH-	TV condition for "channel decreased" can realize channel add function.
19	Number keys	Watching TV program, can choose the place be fond of audio/video files show/playback.
20	VOL+	Press this button for the system sounds add features.
21	VOL-	Press this button for the system sounds reduced function.
22	SETUP	Short time press the "set" pop-up menu, then according to the direction key realization by short, each function switching.

### Fix the batteries:

1. Flip the remote control to the back, take down the lid;
2. The battery warehouse polarity direction, put in battery;
3. According to remove the lid of a reverse direction, mount the lid.



# Basic Function Operation

## 1. Operation

- 1) Connect the machine to electric with power supply(100-240V) . Red light shows power on and charging.
- 2) Switch the ON button on the machine for screen display. Leaving the power switch OFF and unplug the adapter if not in using
- 3) Links with the TV set, please change the TV model into AV state

## 2. TFT picture adjustment

Press LCD MENU enter into LCD setup menu for adjustment.

## 3. Play /Pause

- 1) This player will automatically play once the disc is loaded.
- 2) Press ► || key, to pause
- 3) Press ► || key once more to resume play.

## 4. Play the program of USB/SD/MMC memory card (Optional function)

Insert SD/USB device to play the programs of memory card.

## 1. PANEL SETTING

Press the "LCD MENU" key to enter menu setting; press the direction key UP/DOWN key to move the cursor, press the direction key to select the desired submenu function and the direction key LEFT/RIGHT key to adjust the function.

1) Brightness Adjustment: Press the direction key DOWN key and RIGHT key to choose the "Brightness" submenu, press the direction key LEFT/RIGHT key to adjust the function and set the brightness of video output.

2) Contrast Adjustment: Press the direction key DOWN key and RIGHT key to choose the "Contrast" submenu, press the direction key LEFT/RIGHT key to adjust the function and set the contrast of video output.

3) Color Adjustment: Press the direction key DOWN key and RIGHT key to choose the "Color" submenu, press the direction key LEFT/RIGHT key to adjust the function and set the color of video output.

4) TINT Adjustment: Press the direction key DOWN key and RIGHT key to choose the "Tint" submenu, press the direction key LEFT/RIGHT key to adjust the function and set the tint of video output.

5) Ratio: Press the direction key DOWN key to move the cursor and choose "Ratio", press the direction key LEFT/RIGHT key to adjust the function and set the ratio of image screen of video output as 16:9/4:3.

6) Default: After this option is chosen, this function setting column is restored to factor settings.

## 1. SYSTEM SETUP

**1) TV System:** Choose the [TV System] option, press the direction key RIGHT key to enter the submenu; according to the color format of the connected TV, choose a proper system from NTSC, PAL and AUTO. (Remember to choose a correct TV system; otherwise, no image will be available).

**2) Power Resume:** Choose the [Power Resume] option, press the direction key RIGHT and UP key to choose the desired option to set the function "ON" or "OFF"; when this device is in stop state or switched off, restart the device to resume the last video play status.

**3) Screen Saver:** On/Off; you may turn on/off the screen saver.

**4) TV Type:** Choose the [TV Type] option, press the direction key RIGHT key to enter the submenu, according to your demand, there are three modes available:

4:3PS: For common TV, in such mode, when the wide-screen video is played, the left and right edges of the video will be cut off.

4: 3LB: For common TV, in such mode, when the wide-screen video is played, the top and bottom of the screen will have black strips.

16:9: Suitable for the wide-screen TV.

**Note:**

a. The play effect is related to the ratio of the video recorded; therefore, some videos may not be played in the screen size you have chosen.

b. For the 4:3 video, whichever video ratio is set, the play ratio will be 4:3.

c. The selection of video ratio shall match the screen ratio of the TV being used.

5) Password: Initially, set this option as "Password lock" status; in such case, you can not choose the password as per "Level" nor change the password. To set the "Level" option, press the number key to input the initial password of this device: 0000, then press the Selection key to confirm; to revise the password, you need to input the old password and then new password (the valid password shall be of 4 digits.).

6) Rating: When the disc with lock function, you may, according to the level of the disc and your actual demand, choose a proper age control level. The control levels are arranged from high to low; Level 1 is the lowest while Level 8 is the highest. This function is only suitable for the disc with level limit system; this function can be realized only when the password lock set is released, and only when the password lock is on, the level control can function.

7) Default: After this option is chosen, this function setting column can restore to the initial factory settings.

## **2. LANGUAGE SETTING**

1) OSD Language: Enter OSD LANGUAGE setting, press the direction key to choose the desired "OSD LANGUAGE" option, then press the [ENTER] key to confirm. There are 8 modes available for such option, i.e. English, Chinese, German, Spanish, French, Portuguese, Italian and Russian.

Note: If the language you choose is unavailable in the DVD, then this device will automatically choose the defaulted language in such video.

2) Audio Lang: Enter AUDIO LANG setting, press the direction key to choose the desired "AUDIO LANGUAGE" option, then press the [ENTER] key to confirm. There are multiple modes available for such option, i.e. English, Chinese, German, Spanish, French, Portuguese, Italian, Russian, etc..

3) Subtitle Lang: Enter SUBTITLE LANG setting, press the direction key to choose the desired "Subtitle Language" option, then press the [ENTER] key to confirm. There are multiple modes available for such option, i.e. English, Chinese, German, Spanish, French, Portuguese, Italian, Russian, etc..

4) Menu Lang: Enter MENU LANG setting, press the direction key to choose the desired "Menu Language" option, then press the [ENTER] key to confirm. There are multiple modes available for such option, i.e. English, Chinese, German, Spanish, French, Portuguese, Italian, Russian, etc..

Note: If the language you choose is unavailable in the DVD, then this device will automatically choose the defaulted language in such disc.

### **3. AUDIO SETUP**

1) KEY: Press the UP/DOWN key to move the sliding block to adjust the audio.

### **4. VIDEO SETUP**

1) Brightness: Press the UP/DOWN key to move the module to adjust the brightness of video output.

2) Contrast: Press the UP/DOWN key to move the module to adjust the contrast of video output.

3) Hue: Press the UP/DOWN key to move the module to adjust the hue of video output.

4) Saturation: Press the UP/DOWN key to move the module to adjust the saturation of video output.

5) Hue: Press the UP/DOWN key to move the module to adjust the sharpness of video output.

### **5. DIGITAL SETUP**

1) OP Mode: In the output mode, choose the desired line output and RF adjustment.

2) Dynamic Range: Press the direction key DOWN key to enter the "Dynamic Range Compression" menu to eject the following "Dynamic Range Compression" functional pictures; press the direction key RIGHT key and DOWN key to adjust the "Dynamic Range Compression" ratio.

3) Dual Mono: Choose the [Digital Setup] option, press the direction key RIGHT key to enter the submenu to eject the "Left +Right" or "Dynamic Range Compression", then press the direction key UP/DOWN key to choose Stereo/Left/Right/Mix and finally press the OK key to confirm.

## 6. ATV SETUP

Press the SETUP key to enter menu setup, press the direction key to move the cursor to the TV menu position, press the direction key to choose the desired submenu function, press the “ENTER” key to confirm. To adjust other submenus, press the SETUP key to back to the menu.

1) Auto Search: Press the direction key to move the cursor up/down to choose “Auto Search”, then press the direction key to move the cursor left and right to choose “Start” and press the “ENTER” key to confirm.

2) Manual Search: Press the direction key to move the cursor to “Manual Search”, then press the direction key to move the cursor left and right to choose “Start” and press the “ENTER” key to confirm. This device supports auto search and manual search. Choose the corresponding format to have auto search. The manual search needs to choose correct band and format.

3) Fine Tune: When one channel lock deviates from the defined frequency of the channel, press the direction key to move the cursor for fine tune, then press the direction key to move the cursor left and right to choose “Start”, and then press the “Enter” key to enter the fine tube search function.

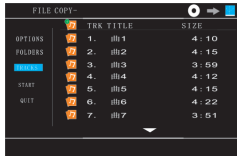
4) ATV Audio Mode: Press the direction key to move the cursor to the “ATV Audio Mode”, then press the direction key to move the cursor left and right to choose the desired format from “I, BG, D/K, M” and finally press the “ENTER” key to enter the format for the local situation. (Different area has different format. Please choose the one fitting your area.)

## MP3/Transcord/Multimedia Function

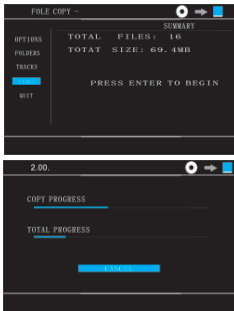
### 1. Copy the music/video in MP3, CD, EVD, MP4, RMWB (MP5)

When playing SD/USB, press the [CH-COPY] key on the remote controller, the display of the device will eject the operation menu; press the UP/DOWN key to move the cursor to [TRACKS], press the direction key RIGHT key to move the cursor to the [TRK TITLE] menu, and press the [ENTER] key to choose all tracks. Press the UP/DOWN key move the blue cross cursor to the “Track” to be reproduced and press the [ENTER] key to confirm.





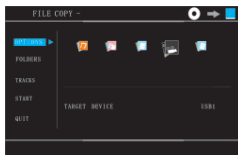
Press the [ENTER] key to choose the desired track, press the direction key to move the cursor left to the “Start” option and then press the “ENTER” key to start copying.



In the transcoding process, do not disconnect USB or power off; otherwise the file transcoded will be lost; after the transcoded music or video is played completely, the transcoding will be complete at the same time. In such case, the U disc has such track. After the operation is over, press the direction key to move the cursor to the “QUIT” option, press the “ENTER” key to exist and then unplug the USB.

Note: When MP4/MP5 is played, you must press the “■” key on the remote controller and then press the [COPY] key (if not so, no reaction when only the [COPY] key is pressed) to have the following interface; the device will eject the operation menu (press the direction key to move the cursor

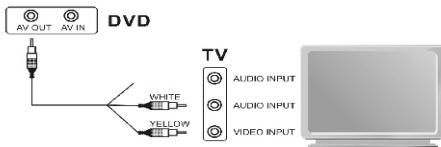
right to the icon of your desired file, such as music icon, album icon, game icon, video icon, e-book icon, and then press the UP/DOWN key to move the cursor to [TRACKS], press the direction to move the cursor right to the [TRK TITLE] menu and finally press [ENTER] key to confirm. Or press the UP/DOWN key to move the blue cross cursor to the track to be copied and press the [ENTER] key to confirm. After pressing the [ENTER] key to choose the desired track, press the direction key to move the cursor left to the “START” option and then press the [ENTER] key to start copying.



After the operation ends, press the direction key to move the cursor to the “QUIT” option and then press the “ENTER” key to exit and finally unplug the USB.

## AV OUT (Signal to TV)

Links with the TV set, please put the TV set in a state of AV.



Note: A1

Basic function operation

Open cooperation: Connecting with adaptor, please put ON/OFF to be on, TV player will completely be opened after 3 seconds, then change the TV player mode to be TV mode.

Note: open by ON/OFF or remote.

Press Setup to be TV player setup menu, choose menu by forward keys, selected menu will be bright color, then press enter to confirm operation.

TV player setup operation: Adjust TV, OSD language, closed captions setup, screen saver setup, last memory state, Audio, Video etc.

Press setup: the TV player system will be pause.

## TV player Parameter

### TV player Part technical specification

Supporting out device	USB/MMC/SD
Audio out	AUDIO; 2. 0V+0. 2, Speak: 8 $\Omega$ /1. 5W; Output of earphone: 15mW
Frequency	20HZ—20KHZ
Audio (S/N) Radio	$\geq 50$ dB
Range of activity	$\geq 50$ dB
VEDIO OUTPUT	1. 0V $\pm$ 0. 2Vp-p(75 $\Omega$ )
VEDIO OUTPUT	PAL/NTSC/AUTO/SECAM

### TV PARAMETER

Analogue receiver frequency	BG/DK/I/L; 48. 25MHz~863. 25MHz M; 55. 25MHz~801. 25MHz
AUDIO SYSTEM	DK, I, BG, L, M









