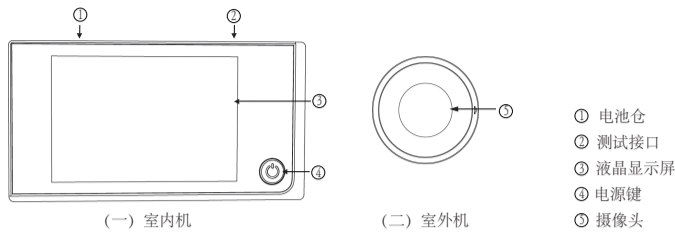


电子猫眼用户手册

感谢您购买我们公司生产的智能电子猫眼，为了帮助您正确使用产品，请在使用前仔细阅读本手册。

产品外观及部件

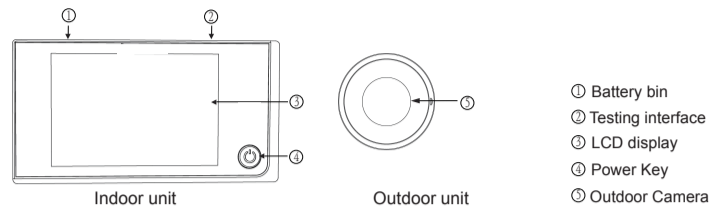


- ① 电池仓
- ② 测试接口
- ③ 液晶显示屏
- ④ 电源键
- ⑤ 摄像头

Digital Door Viewer User's Manual

Thanks for purchasing the intelligent digital door viewer produced by us. In order to help you use the product in right way, please read the manual carefully before using it.

The product picture & parts instruction



- ① Battery bin
- ② Testing interface
- ③ LCD display
- ④ Power Key
- ⑤ Outdoor Camera

一、技术规格

显示屏	3.5寸液晶屏, 分辨率480*320
图像传感器	200万像素
视角	实测120°
供电方式	4节7号电池 (4 x AAA)
适用门孔范围	14-28mm
适用门厚范围	40-100mm
室外机尺寸	直径32mm
室内机尺寸	118x62mm

二、功能操作

按电源键开机显示图像，可通过显示屏实时观察门外景象，开机15秒后自动关机。

1. 开机：按电源键
2. 关机：开机15秒后自动关机，开机状态下长按电源键3秒钟也可关机。

三、安装示意图及安装说明：

步骤1：打开螺钉包，根据门的厚度选用长度合适的螺钉。预先将两颗螺钉拧入室外机的金属突杆中。

- 1 -

Technical specification

Display screen	3.5' LCD color screen, Resolution of 480*320
Image sensor	2.0 mega pixel camera resolution
Real viewing angle	120°real viewing angle
Supply power	4pcs AAA batteries
Door hole diameter	14-28mm
Door thickness	40-100mm
Indoor device size	diameter:32mm
Outdoor device size	118x62mm

Function operations:

Pressing power button to display image, through the display screen to observe the scene outdoor, after 15s, the unit will be off automatically.

1. Power on: pressing power button
2. Power off: power off automatically after power on 15s; During power on status, pressing power button 3s to make power off, too.

Installing Diagram and Instruction

Step 1: Take out the screws bag and choose the suitable screws according to the door thickness, insert the screws to the outdoor camera bracket, and lock the screws loosely using screw driver.

- 1 -

步骤2：将室外机插入门孔，从主机背面取下金属支架，将室外机的排线通过金属支架的上端槽型孔，将螺丝通过金属支架的下端槽型孔，将金属支架挂在门外机突杆的螺钉上。（注意：门外机有三角缺口地方朝上，金属支架的箭头方向朝上），检查门外机和金属支架的方向后，向左推拉金属支架以使金属支架被螺钉锁住。然后拧紧两颗螺钉直至支架和室外机被固定牢固。

步骤3：打开主机电池盖，将电池装入主机（电池盖上有电池的极性标示）。

步骤5：将室内机背面的4个槽孔对准金属支架的4个挂钩扣进去，并用力将室内机下拉至锁紧状态。

步骤6：撕下室内机和室外机表面的保护膜。

安装完毕。

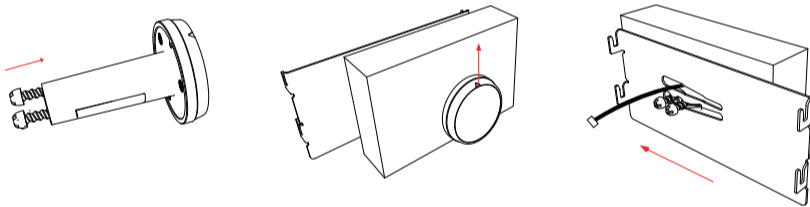


Figure 1 Figure 2 Figure 3

- 2 -

Step 2: Put the outdoor unit with screws into the door hole. Remove the bracket from the indoor unit. Pass the outdoor unit cable through the up-hole of metal bracket, the screws from the down hole. Please make sure the outdoor unit and indoor bracket in the right direction (up arrow means upward). Then, move the metal bracket to the left and make the screws lock it, then, using screw driver to tighten screws again to fix the metal bracket and outdoor unit firmly.

Step 3: Open the battery slot to insert the batteries according to the right instructed direction on the slot cover.

Step 4: Connect the cable from outdoor unit to the connector of the indoor unit in right direction.

Step 5: The four slots on the back of the indoor unit is aligned with four projection on the mental bracket and buckle up, then, pull down the unit to lock tightly.

Step 6: Remove the protective film from indoor unit and outdoor unit surface.

Installation finished.

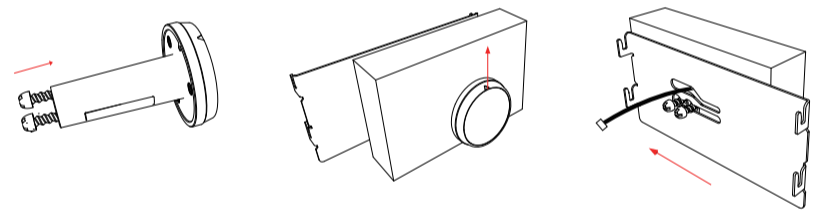


Figure 1 Figure 2 Figure 3

- 2 -

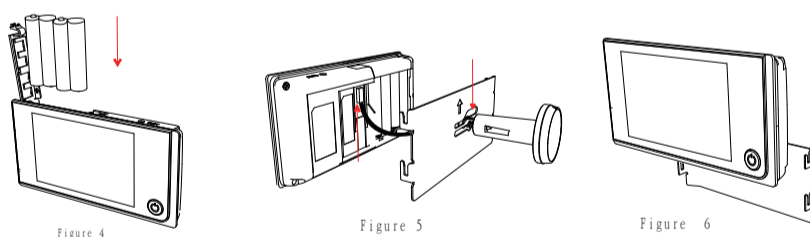


Figure 4 Figure 5 Figure 6

安装注意事项：

1. 任何时候切勿拉扯排线，不要以拎排线的方式来拿取室外机，拉扯、拎拽排线易导致排线受损。
2. 室外机与室内机（主机）通过软排线连接，将排线连接到主机时，排线末端的连接器公座与主机电路板上的母座对准之后方可稍微用力扣压。将排线从室内机上取下时，应用拇指与食指捏住排线末端的塑胶片将排线从主机上取下，不可直接拖拽排线。
3. 装入电池，请确保电池极性放置正确。电池极性放置错误可导致产品电路受损。请勿新旧电池混用。
4. 禁止用力按压液晶屏；请勿猛烈撞击、震动该产品；请勿在高温、高温、多尘埃环境下使用该产品。

- 3 -

Installation Caution :

1. Please make sure never pull the camera cable in case to break it.
2. The indoor monitor is connected with the outdoor camera by a cable, please press the cable connector appropriately when connect it to the monitor and remove it with thumb and index finger instead of pulling directly.
3. Please make sure the AAA battery pole is right when inserting it in case to damage the product chip. Please don't insert new and used battery together.
4. Please don't press hardly on the LCD screen; Please don't shake and shock the unit. It is not allowed to use in the high temperature, high humidity, dusty conditions.

- 3 -

四、包装清单：

1. 室内机（主机）	1台
2. 室外机	1台
3. 螺钉	3对
4. 金属支架	1个
5. 说明书	1本

五、可能遇见的故障及处理方法：

故障1：开机后花屏、死屏、无图像或显示 SENSOR FAIL。

可能问题及处理方法：① 排线末端的连接器松动会导致此故障，尝试重新扣接排线。
② 排线受损会导致此故障，检查排线是否有异常。

故障2：无法开机或开机后立即自动关机。

可能问题及处理方法：电池电量不足会导致此故障，请检查电池电量或尝试更换新电池。

保修范围及条件：

整机质保一年，仅限非人为因素导致的故障。

图片仅供参考，以实物为准，生产商保留对产品外观及功能进行改进和升级的权利，恕不另行通知。

- 4 -

Standard Package

1. Indoor unit(monitor)	1 pc
2. Outdoor camera	1 pc
3. Screws	3 pairs
4. Mental bracket	1 pc
5. User manual	1 pc

Common Problems and treatment methods:

Question 1: The screen shows no picture or "sensor fail"

Solution:① The problem is usually casued by the cable connector loose or shake,please power-off the device and connect the cable again.

② The cable is broken and damaged, please check the cable in good condition or not.

Question 2: The device can't open or power-off automatically.

Solution: Please check whether the battery is in low power, and change new ones if needed.

Warranty terms and period:

The whole unit guarantee one year for non-human factors lead to the fault and failure.

Picture is just for reference, goods in kind prevail, manufacture reserves the right to improve the appearance and functionality and upgrades without notice.

- 4 -