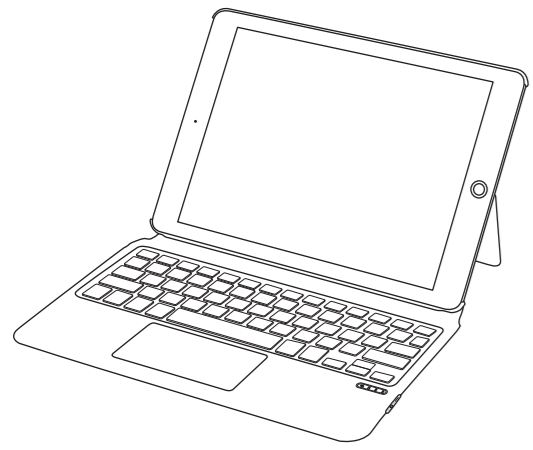


无线键盘使用说明书

(for iOS)



包装包含:说明书×1 蓝牙键盘×1 USB充电线×1

产品型号规格

- 1.蓝牙标准接口
- 2.有效操作距离: 10米内
- 3.调制方式: GFSK
- 4.工作电流: <8mA(触摸板工作时)
- 5.待机电流: <0.3mA
- 6.睡眠电流: <40uA
- 7.充电电流: 100mA/200mA(背光款)
- 8.待机时间: >100天
- 9.充电时长: 2-3小时
- 10.锂电池容量: 250mA/500mA(背光款)
- 11.工作时长: 不小于50/100小时(关闭背光)
- 12.锂电池寿命: 3年
- 13.按键力度: 80±10g
- 14.按键寿命: 500万次点击
- 15.工作温度: -10°C - +55°C

入门指南

- 蓝牙指示灯: 进入蓝牙配对模式后闪烁
- 大小写状态指示灯: 当键盘处于大写输入状态时灯亮
- 弱电指示灯: 当电压低于3.3V时闪烁, 提示需要充电
- 充电指示灯: 充电时长亮, 充满后亮绿灯
- USB Type C 充电接口: 弱电指示灯闪烁时, 请将原装配件USB充电线插入此口进行充电, 建议使用5V 1A设备充电
- 电源开关

蓝牙键盘连接操作步骤

1. 拨动开关至ON处, 蓝牙指示灯、大小写指示灯、弱电指示灯同时长亮3秒后熄灭, 手动按Fn + 进入配对 (进入配对后, 蓝牙灯开始闪烁)
2. 打开并解锁iPad, 点击“设置”图标
3. 在设置菜单中, 点击“蓝牙”菜单
4. 打开蓝牙开关, iPad会自动搜索蓝牙键盘设备
5. 发现 蓝牙 键盘 设备: Bluetooth Keyboard, 点击它并确认连接后, 蓝牙键盘会自动连接
6. 蓝牙连接成功后, 蓝牙指示灯熄灭, 在蓝牙设备列表中会显示此设备“已连接”

蓝牙快捷功能见说明

返回主界面	亮度减	亮度加
搜索	屏幕键盘	截屏
上一曲	播放/暂停	下一曲
静音	音量减	音量加
剪切	复制	粘贴
全选	快门	锁屏
蓝牙配对	背光亮度调节	组合功能键
语音文字输入	向前分选	向后分选
触摸板开启/关闭	语言切换	

- 注: 截屏功能分短按与长按, 以适应不同机型
短按: 适用于有Home键的机型
长按2秒: 适用于无Home键的机型
注: 背光版本的键盘才有此按键
颜色调节: 直接单击, 共7种颜色循环
亮度调节: Fn组合按键, 共3档亮度循环
语音输入: 第一次使用时, 需要启用听写功能

iOS 13-15系统触摸板手势

单指操作	鼠标左键 (可自定义) 单指点击	光标滑动 单指移动
单指操作	拖动项目 单指按住并再移动	向左切换APP 单指从左边沿向左滑动
单指操作	向右切换APP 单指从右边沿向右滑动	打开APP切换器 单指从左边沿向上滑动
单指操作	打开程序坞 单指从下边沿向上滑动	
双指操作	鼠标右键 (可自定义) 双指点击	左右滚动 双指水平移动

双指操作	上下滚动 双指垂直移动	放大 (适用于浏览) 双指张开
三指操作	鼠标中键 (可自定义) 三指点击	向左切换APP (任务条模式) 三指左移
三指操作	向右切换APP (任务条模式) 三指右移	返回主屏 三指上扫
三指操作	返回上一级 三指下扫	
四指操作	截屏 四指点击	

① 注意

1. 在长期不使用时, 我们建议关闭键盘, 以延长电池的寿命
2. 为了获得更长的电池使用寿命, 建议电源灯闪烁时才给键盘充电, 每次充电时间最好不少于2小时

节能休眠模式

当键盘15分钟内无任何操作, 将会自动进入休眠模式, 所有LED都会关闭, 需要使用时, 只需要按任意键并等待3秒左右, 键盘会被唤醒并自动连接蓝牙, 就可以进行正常工作

故障清理

1. 确定已开启电源
2. 确定键盘在可操作的距离范围内
3. 确定电池蓄有电量
4. 确定平板电脑的蓝牙设置已打开
5. 确定无线键盘和蓝牙连接
6. 确定无线键盘与蓝牙已配对

清洁

用清水, 酒精或类似酒精的消毒剂清洁键盘

充电

- 当电池电量低时, 低电量指示灯会不断闪烁, 这时需给键盘充电
1. 将原装附件USB线Type C 端连接到键盘上的充电接口
 2. 将USB A端连接到电源适配器或电脑USB接口 (电源适配器不包)
 3. 键盘充电过程中, 充电指示灯会亮, 充满后亮绿灯

iOS升到10-12, 蓝牙键盘上的CapsLock键默认切换为拉丁键盘的功能 (iOS 13-15 CapsLock键默认切换为语言功能), 从而导致无法进行大小写切换, 可做以下设置, 还原正常功能:

1. 首先连接上蓝牙
2. 在设置->通用里面看到一个实体键盘
3. 点进去后, 会看到“大写锁定切换拉丁键盘, (iOS 13-15 CapsLock键默认切换为语言功能)”是打开状态, 关掉即可



保修卡

用户填写资料

公司或个人全称

通讯地址

电话 邮编

所购产品名称及型号

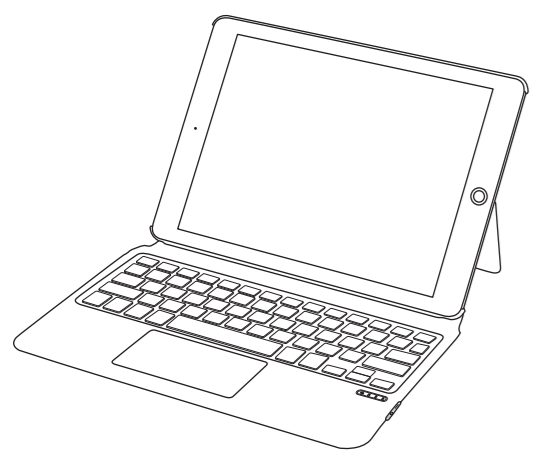
购买日期

本有限质保不涵盖由于以下原因导致的问题或损坏:
(1) 意外事件、误用、操作不当或任何未授权的维修、改装或者拆装
(2) 操作或维护不当, 使用过程中违反产品说明或连接不适当的电源
(3) 或者使用并非本公司提供的消耗品 (如备用电池), 但适用法律禁止此类限制的情况除外



Wireless Keyboard User Manual

(for iOS)



Package included: Instruction manual×1 Wireless keyboard×1 USB charging cable×1

Product model specification

1. Bluetooth Interface Standard
2. Operating Distance Available: 10 meters
3. Modulation System: GFSK
4. Working Current: <8mA (When the touchpad is working)
5. Standby Current: <0.3mA
6. Sleeping Current: <40uA
7. Charging Current: 100mA/200mA (Backlight)
8. Standby Time: >100 days
9. Charging Time: 2-3 hours
10. Lithium Battery Capacity: 250mA/500mA (Backlight)
11. Working Time: > 50/100 hours (turn off the backlight)
12. Lithium Battery Life: 3 years
13. Key Strength: 80±10g
14. Key Life: 5 Million Stroke
15. Operating Temperature: -10°C - +55°C

Getting Started Guide

- Bluetooth Indicator: Flashes after entering Bluetooth pairing mode
- Caps Lock Indicator: Lights up when the keyboard is in uppercase input
- Low Battery Indicator Light: The light will blink when the voltage is lower than 3.3V
- Charging Indicator: The light will be on when charging, When fully charged the indicator light is steady to green light
- USB Type C Charging Dock: When Weak current indicator light flashes, put the original accessories. Plug the USB charging cable into this port for charging. Recommended to use a 5V 1A device to charge it
- Power Switch

Bluetooth Keyboard Connection Steps

1. Toggle the switch to ON, the Bluetooth indicator, Caps Lock indicator, and weak power indicator will light up for 3 seconds and then turn off, manually press Fn + to enter pairing (the Bluetooth indicator starts to flash during pairing)
2. Open and unlock your tablet and click on the "Settings" icon.
3. In the settings menu, click on the "Bluetooth" menu
4. Turn on the Bluetooth switch and the tablet will automatically search for Bluetooth keyboard devices
5. Discover the Bluetooth keyboard device: Bluetooth Keyboard, click it and confirm the connection, the Bluetooth keyboard will automatically connect
6. After the Bluetooth connection is successful, the pairing indicator will turn off, and "Connected" will appear in the list of Bluetooth devices

Keyboard shortcut function description

Back to Home page	Brightness -	Brightness +
Search	ON/OFF Keyboard	Screen Capture
Previous track	Pause/Play	Next Track
Mute Key	Volume -	Volume +
Cut	Copy	Paste
Select all	Take a photo	Lock Screen
Bluetooth pairing	Backlight Brightness Adjustment	Combination Function Keys
Voice text input	select forward part	select backward part
Touchpad on/off	Language Switching	

- Note: Screen capture function is divided into short press and long press to adapt to different models
Short Press: for models with Home button
Long Press for 2 seconds: for models without Home button
Note: This button is only available on the backlit version of the keyboard
Color Adjustment: direct click, a total of 7 color cycles
Brightness Adjustment: Fn combination button, a total of 3 brightness cycle
Voice Input: the first time to use, you need to enable dictation

iOS 13-15 system touchpad gestures

Single finger operation	Left mouse button Single Finger Click (Customizable)	Cursor sliding Single Finger Movement
Single finger operation	Drag APP Double-Click with one finger to move	Switch APP to the left Swipe left from the right edge with one finger
Single finger operation	Switch APP to the right Swipe right from the left edge with one finger	Open the APP switcher Swipe down from the top edge with one finger
Single finger operation	Open Dock Swipe up from the bottom edge with one finger	
Two-fingers operation	Right Mouse Button two-fingers click (customizable)	Scroll left and right Move two fingers horizontally

Two-fingers operation	Scroll up and down Two fingers move vertically	Enlarge Fingers spread out (Suitable for browser)
Two-fingers operation	Shrink Pinch two fingers inwards (Suitable for browser)	
Three fingers operation	Middle mouse button Click with three fingers (Customizable)	Switch APP to the left Three fingers move left (Task bar mode)
Three fingers operation	Switch APP to the right Three fingers move right (Task bar mode)	Back to home screen Swipe up with three fingers
Three fingers operation	Back to previous Three fingers move down at the same time	
Four fingers operation	Screenshot Four-fingers click	

① Attention

1. When not use for long time, suggest to close keyboard in order to prolong battery life
2. In order to get longer battery life, charging before keyboard power light flashes, charging time must be better more than 2 hours

Energy saving sleep mode

When keyboard not use will be enter sleep mode after 15 minutes, keyboard indicator will off press any key 3s to wake it up when need use again, then keyboard indicator will turn on

Troubleshooting

1. Make sure the power is turned on
2. Ensure keyboard operable distance
3. Make sure the battery has power
4. Ensure the device's Bluetooth was turned on
5. Ensure the wireless keyboard was connected with the Bluetooth
6. Ensure the wireless keyboard paired successfully

Cleaning

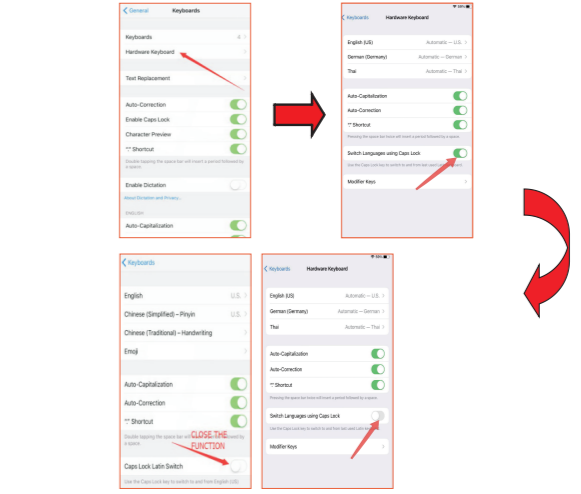
Washing, alcohol or a similar cleaning agent decontamination keyboard

Charging

- When battery is low, the power indicator blinking, means need to charge the keyboard
1. Connect Genuine Parts USB cable B port to keyboard cradle
 2. Connect USB cable A port to power adapter or computer USB port
 3. During charging, the charging indicator will be on, and it will turn green when fully charged

When system is upgraded to iOS10 - iOS 12, the CapsLock key on the Bluetooth keyboard will default to the function of switching to the Latin keyboard (the CapsLock key will default to the function of switching language in iOS 13-15), which makes it impossible to switch between upper and lower case. You can do the following settings to restoring normal functionality:

1. First connect the bluetooth
2. Settings -> General -> Hardware keyboard
3. After clicking in, you will see "Caps Lock Latin Switch", (iOS 13-15 CapsLock key will default to switch language function)" is on, just turn it off



Warranty Card

User information

Company or personage full name

Contact address

TEL Zip

The purchased product name and model NO.

Purchased date

This reason due to the product broken and damage is not include on the warranty:

- (1) Accident, misuse, improper operation, or any unauthorized repair, modified or removed
- (2) Improper operation or maintenance, when operation violation of the instructions or connection unsuitability power supply
- (3) Or use consumables not provided by our company (such as spare batteries), unless such restrictions are prohibited by applicable law

