



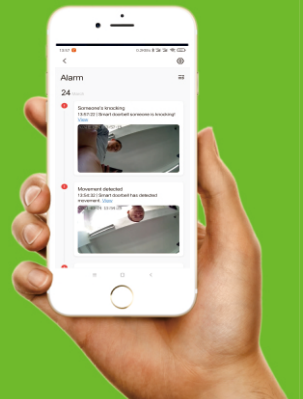
WIRELESS PEEPHOLE VIDEO DOORBELL

This smart battery Wifi Video Doorbell lets you answer the door from anywhere, whether you're halfway across the world. It lets you see, hear and speak to visitors with ease using your smart phone or tablet.



USER MANUAL

Please make full charge before use it!



Note: If any security apps have been installed in your phone/tablet that could affect the Smart Life/Tuya Smart app, please be sure to grant it the appropriate permissions. please make sure your phone/tablet is connected to your wifi router (only support 2.4g)

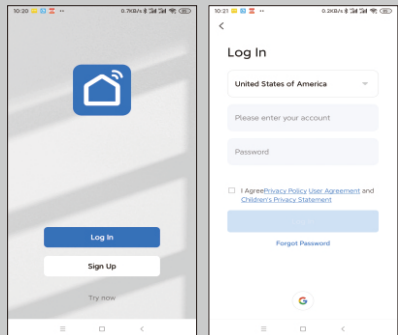
INSTALL APP



NOTE: Search for Smart Life/Tuya Smart on the google play/app stores.

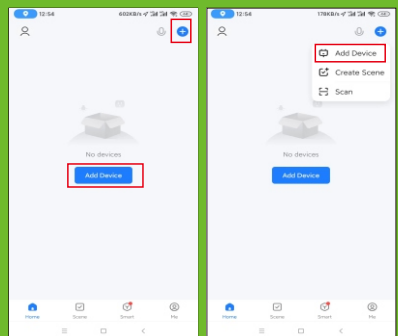
STEP 1 CREATE ACCOUNT

Open the app. Follow the prompts and tap "Sign Up" to create an account. Be sure to allow all permissions requested by the app.



STEP 2 ADD DEVICE

Tap the + to add a new device.



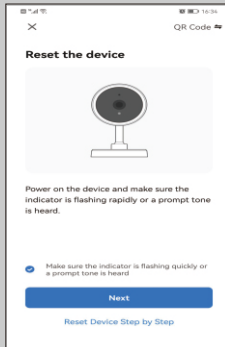
STEP 3

Tap the QR Code to add a new device. **Note:** Make sure your phone/tablet is connected to your wi-fi internet prior to configuring the wi-fi for the machine



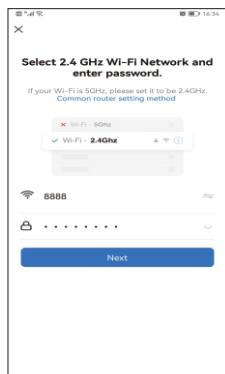
STEP 4

Hold down the button on screen for 5 seconds to initiate wi-fi configuration mode, once you hear the voice prompt, tap "Next." (please make sure the router within 2 meters)



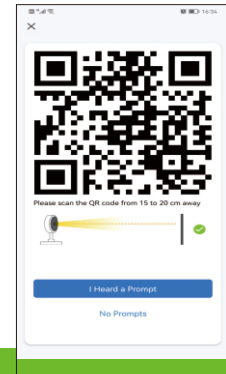
STEP 5

Input your WIFI password for WIFI configuration
TIP: WI-FI SET UP NOT WORKING Try restarting your router.



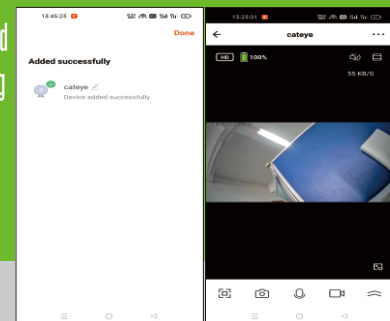
STEP 6

Put your cellphone in front of the device about 10-20cm to facilitate QR scanning.



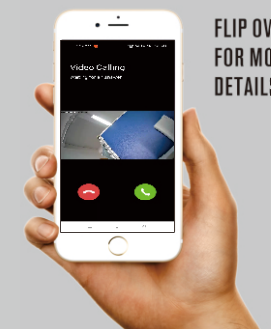
STEP 7 APP/DEVICE CONNECT

Once the Wi-Fi set up is complete and you hear the voice prompt confirming that the Wi-Fi configuration was successful, tap "COMPLETE"



DONE! DEVICE INSTALLATION

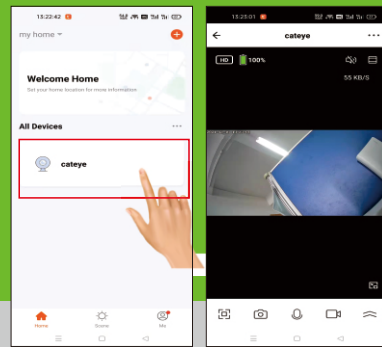
Note: Only support the product with button.



FLIP OVER FOR MORE DETAILS!

AUTOMATICALLY WAKES UP

Tap the picture Quick access via app within 3 seconds.

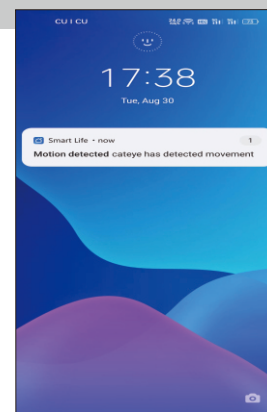


REMOTE VIEWING NOTIFICATIONS

NOTIFICATIONS

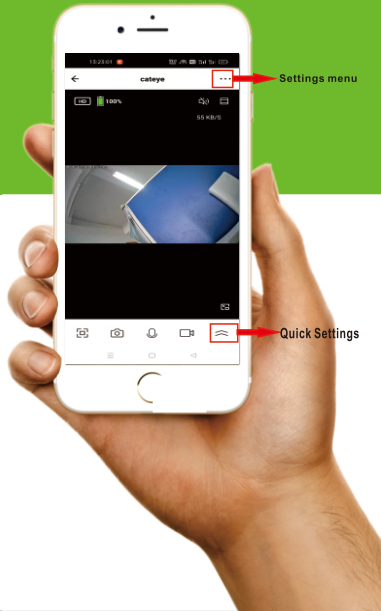
STANDBY MODE

will receive a push notification. Tap to continue.



Note: Only support the product with button.

APP INTERFACE FUNCTIONALITY

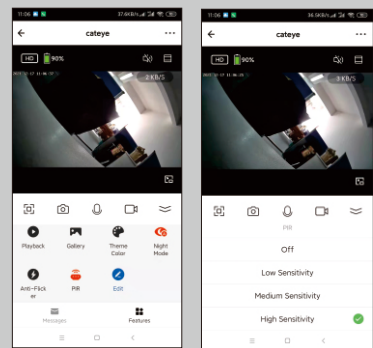


- TAP TO TAKE A SNAPSHOT
- TAP AND HOLD DOWN TO TALK
- TAP TO RECORD VIDEO
- BATTERY LIFE
- Quick Settings

PIR SETTINGS

This function can only be enabled AFTER the app has been successfully added to your phone.

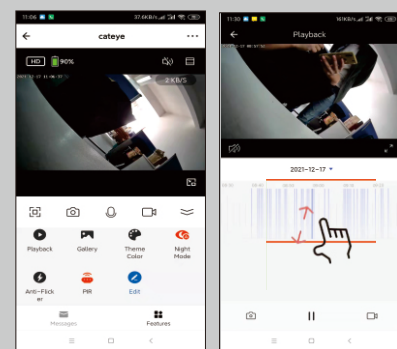
When pir alarm(PIR) are turned on, you'll be notified on your phone whenever motion is detected or when theft is attempted.



PLAYBACK

Click "Playback" to check the SD card storage record

*The device only support above Class 10 FAT32 TF cards.

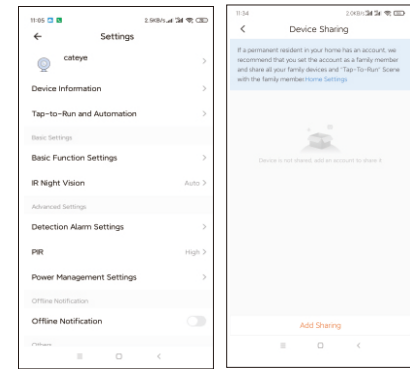


SHARING WITH OTHER PHONES

Shared users: Please download and install the app before proceeding.

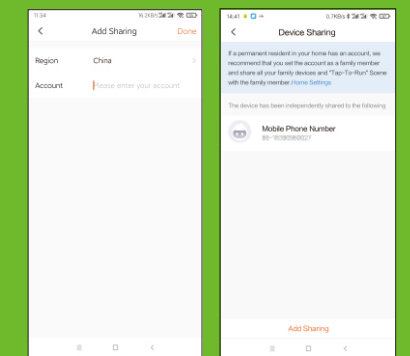
This device can support 4 users. The shared users can add the device by scanning the shared QR Code provided by the Administrator(owner of device).

- Setp 1 : Choose the device you want to share.
- Setp 2 : Click "Setting", choose share device.
- Setp 3 : Click "Add Sharing"

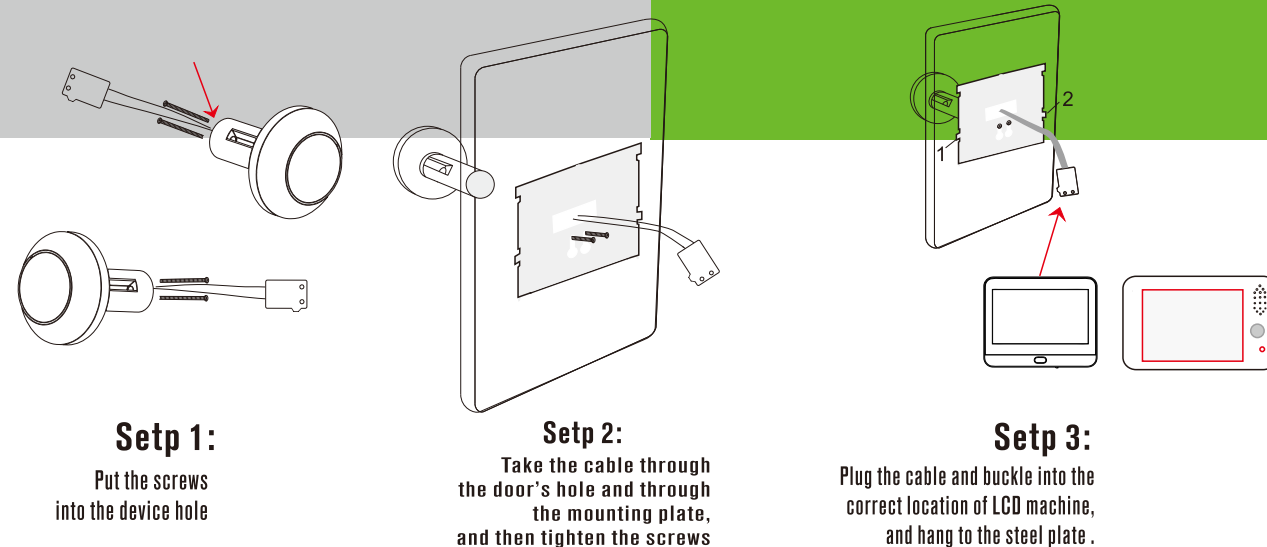


- Setp 4 : Enter the account you want to share in the account field.

When the input is complete, click "Done" in the upper right corner. Complete sharing!



MOUNTING WALL INSTALLATION



Kind tips:
1. Do not pull the cable too hard during installation
2. The cable contains data transmission, please do not fold it

TROUBLE SHOOTING

WONT TURN ON: Please ensure that the device is properly charged.

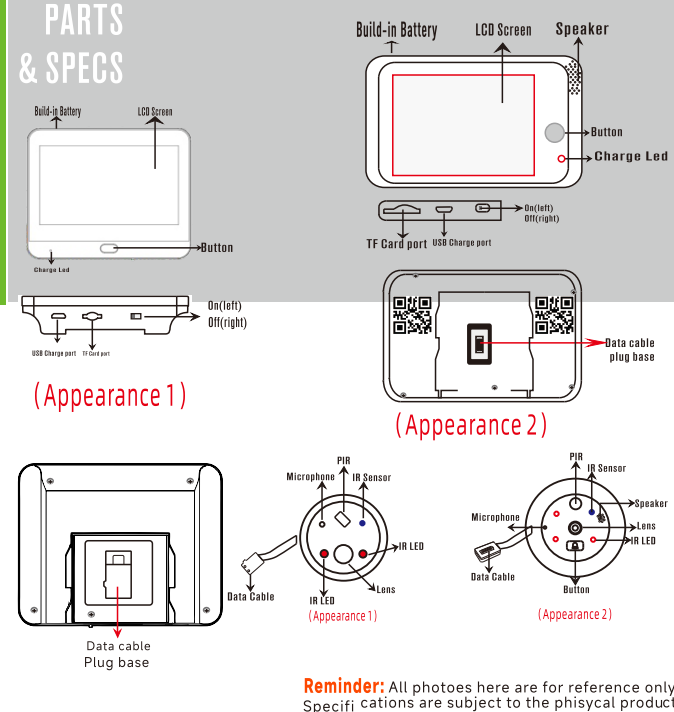
DEVICE WONT TURN ON AFTER INITIAL USE: If you remove the device from the mounting plate while the Tamper Alarm function is turned on, you may disable the device. Simply put it back on the mounting plate and press the doorbell button. GO to the app settings to turn off the Tamper Alarm.

DEVICE WONT TURN ON AFTER INITIAL USE: If prompted with "The Connection Failed, Please Check The Wi-Fi Configuration is Correct" when ringing the doorbell after the device has been successfully configured, there may be too many barriers (typically walls) between your Wi-Fi router and the device which has weakened the signal.

Doorbell Installation precau

Installation precautions

1. The product connecting wire is a vulnerable and precise component, and you should check the position of the fixing metal plate during installation when install the screws, prevent the connecting wire from being squeezed and do not forcefully pull the connecting wire.
2. Any operation must be completed in the shutdown state, and the connecting cable contains multiple data transmission, do not compress!
3. Please connect the camera head and the screen in the correct direction, after configure the wifi connection ,and then install it to your door.



SPECIFICATION:

MATERIAL: Aluminum Alloy
LCD SIZE: 4.3 Inch
DISPLAY RESOLUTION: 1080P
BY PHONE: Android, iOS

MOTION DETECTION: Support PIR
WI-FI MODE: 802.11 b/g/n
INPUT/OUTPUT: Built-in microphone, two-way audio
NIGHT VISIBILITY: with IR led, Night vision up 1-3 meters
STORAGE: Cloud storage and TF Card(128G Max.)
BATTERY: 5000mAh battery, charged by USB(5V, 1A)
USER ACCOUNTS: Total 4 Users(Admin user and shared user)
CERTIFICATION: CE, FCC, RoHS