

产品使用说明书

三合一桌面支架无线充

产品参数

材质: PC+硅胶+磁铁+铝合金+玻璃

电源接口: Type-C

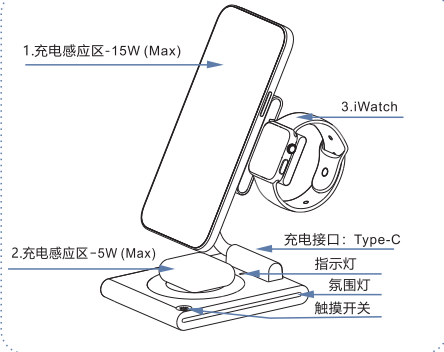
Input: 5V=3A/9V=2.22A

OUTPUT-1: 15W (Max)

OUTPUT-2: 5W (Max)

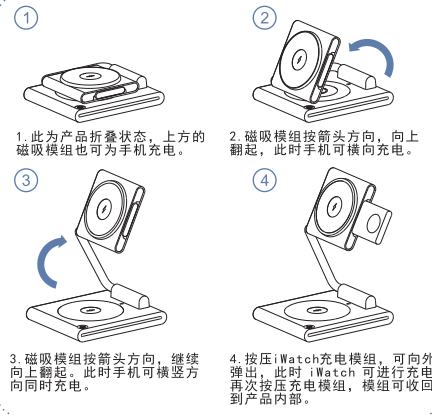
OUTPUT-3: 3W (Max)

产品结构



使用方法

- 推荐使用PD或QC 协议适配器, 以满足最佳使用体验
- 1. 连接适配器与电源, 指示灯亮起, 将符合Qi无线充电标准的手机放置在感应区即可充电, 磁吸无线充电会通过磁力自动定位。
- 2. 底座的无线充电功能, 同样需将符合Qi无线充电标准的设备放置在感应区即可开启无线充电。
- 3. iWatch 充电模块可弹出及收回, 弹出时可为iWatch进行充电。
- 4. LED氛围灯可提供多种灯光模式选择, 轻触按键即可。



LED指示灯定义

• 充电LED指示灯

1. 接通电源/待机状态: 蓝色LED 同时闪烁2次后红色常亮。
 2. 充电状态: 指示灯蓝色。
 3. 电量充满: 指示灯熄灭。
 4. 异物状态: 指示灯闪烁。
- *异常报警状态包括: 过压, 过温, FOD金属异物, 负载异常等。

注意事项

• 使用前请先查看您的手机是否适用无线充电, 充电设备需符合Qi无线充电标准才可使用。

1. 磁吸无线充电功能仅适用于iP12系列手机; iP8-11以及安卓手机仅支持无线充电。
2. 为达到更佳充电效果体验, 请使用PD或QC20W电源适配器进行充电。
3. 请勿把金属/磁铁/信用卡放在充电器上, 否则将影响无线充电, 甚至无法充电。
4. 请勿将水或其他液体溅到无线充上, 若需要清理, 请先确保电源断开

CE RoHS FC

Product instruction manual

3 in 1 Wireless Charging Stand

PRODUCT PARAMETER

MATERIAL: PC+silicone+magnet+aluminum alloy+glass

Port: Type-C

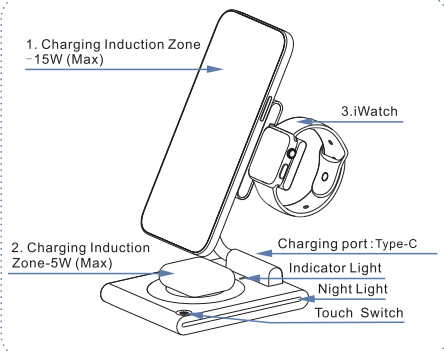
Input: 5V=3A/9V=2.22A

OUTPUT-1: 15W (Max)

OUTPUT-2: 5W (Max)

OUTPUT-3: 3W (Max)

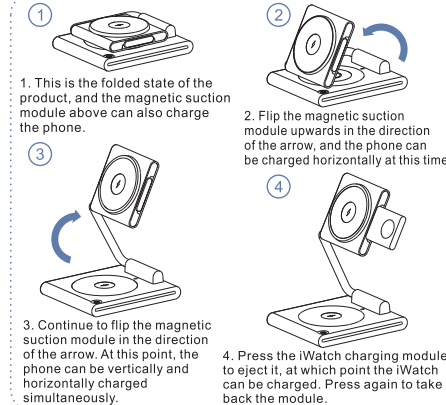
PRODUCT STRUCTURE



INSTRUCTIONS FOR USE

It is recommended to use an adapter that meets the PD or QC protocol to achieve the best user experience

1. Connect the adapter to the power supply, and the indicator light will light up. Place the phone that meets Qi wireless charging standards in the sensing area to charge, and the magnetic wireless charger will automatically locate it through magnetic force.
2. The wireless charging function of the base also requires users to place devices that meet Qi's wireless charging standards in the sensing area to enable wireless charging.
3. The iWatch charging module can be ejected and retracted, and can charge the iWatch when ejected.
4. LED ambient lights can provide multiple lighting modes to choose from, just touch the button.



Definition of LED indicator lights

1. Connect to power supply/standby: The blue LED flashes twice and then the red light stays on
 2. During charging: The indicator light is blue
 3. Fully charged: The indicator light is off.
 4. Foreign object: The indicator light flashes.
- *Abnormal alarm may indicate: overvoltage, overheating, FOD metal foreign objects, abnormal load, etc.

PRECAUTIONS

Please check whether your mobile phone is compatible with wireless charging before use. Only charging devices that complies with the Qi wireless charging standard can be used.

1. Magnetic wireless charging function is only applicable to iP12 series phones; iP8-11 and Android phones only support wireless charging.
 2. In order to achieve a better charging experience, it is recommended to use a PD or QC 20W power adapter for charging.
 3. Do not put metal/magnet/credit card on the charger, otherwise it will affect the wireless charging, or even make it fail to charge.
 4. Do not splash water or other liquids on the wireless charger.
- If you need to clean it up, please make sure that the power is disconnected first.

CE RoHS FC