



# KEYBOARD & MOUSE

## User Manual

Model: KB43



www.iyesido.com

Guangzhou Guan Su Ge Technology Co., Ltd.  
Room A06, Floor 2, T28 Class, No.16, East Of Hao Ke Zhou  
Street, Shixi Village, HaiZhu District, Guangzhou, China.

Thank You For Purchasing KB43 Product!  
The Brief Description Of The Product Assures You  
To Operate Freely, Fully Embodies The Value Of  
This Product, Please Read Carefully Before Use.

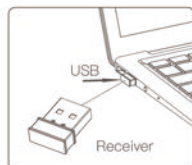
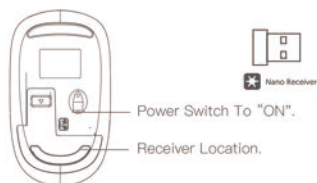


\*Display Of Appearance

### How To Use

1. Insert The Receiver From The Bottom Of The Mouse Into The Computer's USB Port.
2. Turn On The Mouse Power.
3. Wait A Few Seconds For The Wireless Connection To Establish Automatically (For First-time Use, Wait For The Driver To Install Automatically).
4. Once The Driver Installation Is Complete, The Mouse Can Be Used Normally.

The Keyboard And Mouse Share One Receiver.



#### Smart Sleep/Wake-Up:

1. The Mouse Will Automatically Enter Sleep Mode After 10 Seconds Of Inactivity. Move The Mouse Or Press A Button To Wake It Up.
2. After 8 Minutes Of Inactivity, The Mouse Enters Deep Sleep Mode And Needs A Button Press To Wake Up.

**Note:** When The Mouse Wakes Up, The Keyboard Will Wake Up Simultaneously. When The Computer Enters Sleep Mode, The Mouse Will Immediately Enter Deep Sleep Mode. To Wake It Up, Press Any Key On The Mouse Or Keyboard, Which Will Also Wake Up The Computer.

#### List Of Package



Keyboard & Mouse



User Manual

### Product Parameters

Model: KB43  
Material: ABS  
Keyboard Keys: 104 Keys  
Mouse Buttons: 4 Buttons  
Chip: HS6628+BYKC68MS  
Keyboard Battery: One AAA Batteries (Batteries Not Included)  
Keyboard Lifespan: 10 Million Times (Max)  
Mouse Battery: One AA Battery (Batteries Not Included)  
Receiver: (2.4G Wireless) USB NANO Receiver  
Wireless Transmission Range: 10M, Without Obstacles  
Mouse DPI: 800-1000-1600  
Keyboard Operating Voltage: DC 3V  
Operating Current: <4mA  
Mouse Operating Voltage: DC 3V  
Operating Current: <7mA  
Keyboard Dimensions: 440x145x31mm  
Weight: 460g  
Mouse Dimensions: 110x60x33 mm  
Weight: 60g  
System Compatibility: Win95,98/ME/NT/XP/Vista/Win7/Win8/Win10/Win11

#### To Install Or Replace The Battery:

1. Press Down And Slide The Cover To Open It.
2. Insert The Battery With The Correct Polarity (+) And (-).
3. Close The Cover.

#### Incorrect Battery Use May Result In Leakage Or Explosion. Please Follow These Instructions:

1. Insert The Battery With The Correct Polarity (+ And -).
2. Do Not Mix New And Old Batteries, As This May Cause Leakage Or Shorten The Battery's Lifespan.
3. Do Not Store The Battery In Extreme Low-pressure Conditions, As This May Cause Explosion Or Leakage Of Flammable Liquids Or Gases.
4. Do Not Touch Exposed Battery Acid, As It May Cause Skin Injury.