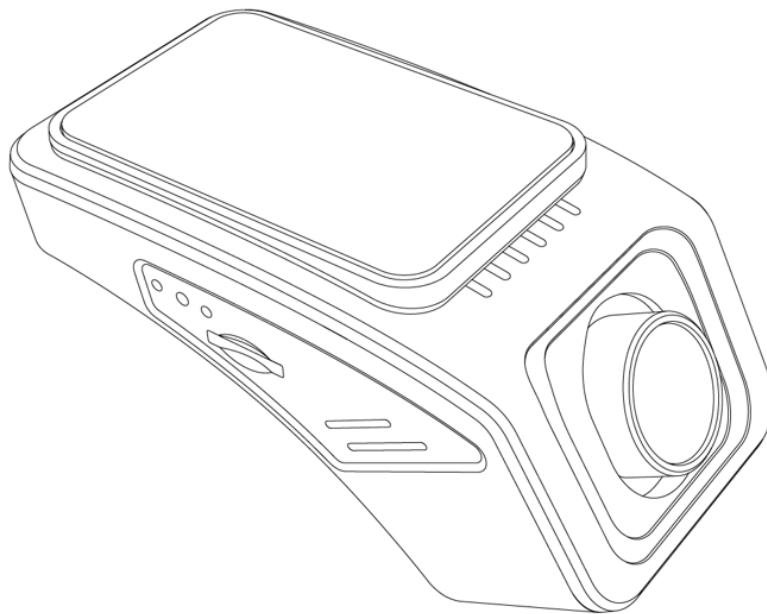


1080P FULL HD
WIRELESS DASH CAM
User Manual



Model: HDC869

Thank you for choosing this HDC869 1080P FHD Wi-Fi Dash Camera. Please read this user manual carefully before using the device.




■The device includes features like as HDR, Loop Recording, 155° Wide View Angle, Night Vision, Time-lapse recording, Parking Monitor, and G-Sensor, as well as the ability to connect to a smartphone through Wi-Fi for live view, video browsing, and device settings.

■This manual should be kept for installation, operation, and specification checks. Upgrades, updates, and other reasons for change may cause specifications to change, resulting in a change in type

Before use:

■Remove the lens protective film to avoid affecting the recording effect and after the dash cam been properly mounted.

■Download and install the “Car_DVR” APP from APP Store (iOS devices) or Google Play (Android devices) to your smartphone.

- Make sure that the TF card is inserted at the correct direction, otherwise it may cause damage to the recorder or TF memory card
- Class10 or above High-speed TF card ( or  or  icon on the TF card) is strongly recommended to be used for this dash cam. Low-speed TF cards might result in video data loss, video file damage, camera system slowness, and other unexpected issues.
- When using the TF Card for the first time, format the TF card by the dash cam (via APP control)
- If there is an emergency and you need to retrieve the contents of the TF card, please do it within 5 to 10 minutes following the incident. The video may be overwritten or not saved fully if it is saved too early or too late.



Function Keys:

Power Button: Press to stop / start the video recording,

Press and hold for 3s to turn off the camera.

Photo Button: Press to take a photo,

Press and hold for 3s to lock the current video file.

Press and hold for 6s to load the default settings.

(The Wi-Fi Passcode will be reset to "12345678")

Reset: Push the Reset key with a pointed end, to reset the dash cam hardware. (In case the recording system stuck sometime.)

LED Indicator:

There has 2 LEDs (Blue and Red)

Blue --- Blue On ---Power On

--- Blue Off --- Power Off

Red --- Slow Flashing--- Video Recording On

--- Constants On --- Video Recording Off



[APP Download](#)



For iOS devices: Please search the “Car_DVR” From APP Store or scan the QR code below and download it for free.

For Android devices: Please search “Car_DVR” from Google Play and download it for free or scan the below QR code to download it quickly.



For iOS device



For Android device

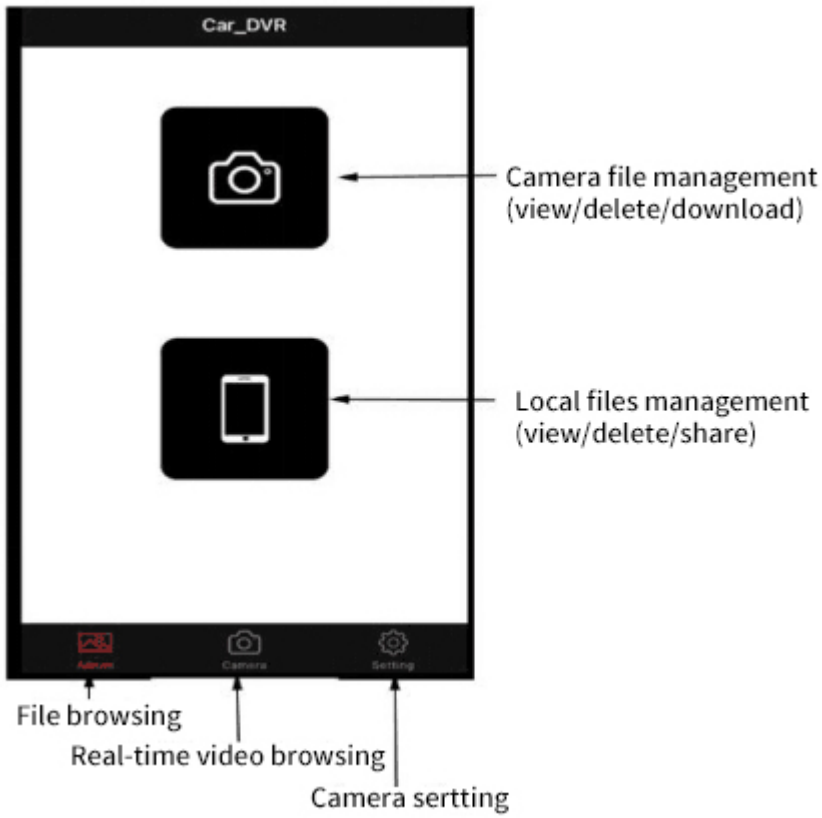
APP Operation Quick Guide:

■Connect to the Dash Cam via Wi-Fi.

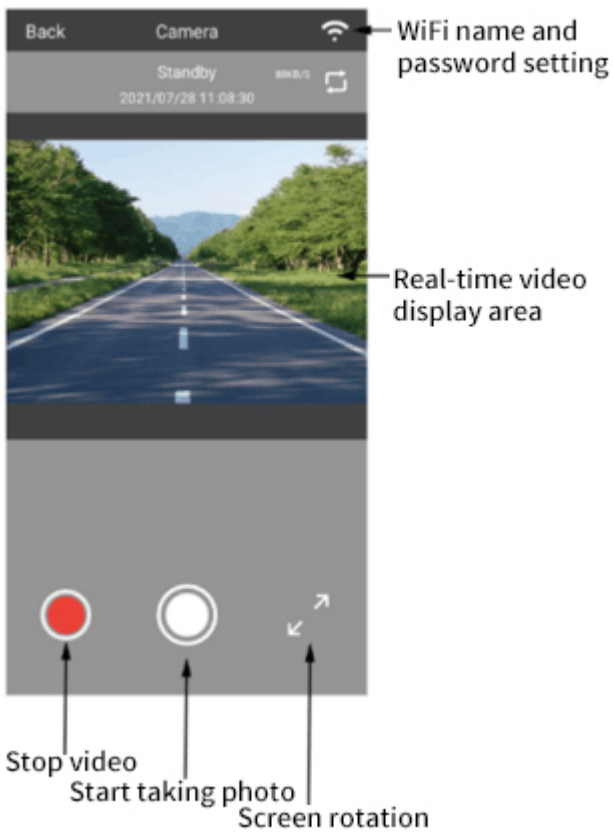
Power on the Dash Cam, Search the Wi-Fi name that start with "CAR_DVR _ ****" from the smartphone, input default password: 12345678.

Click to running the "CAR_DVR" APP on the smartphone:


-Main UI



- Live View



- Camera Setting

Back	Setting	
Video Resolution	1080P30	← 1080P@30fps/720P@30fps
Flicker Frequency	60hz	← 50hz/60hz
Looping Video	1Min	← 1Min/2Min/3Min
Sound Record	<input checked="" type="checkbox"/>	← ON/OFF
Sound Indicator	<input checked="" type="checkbox"/>	← ON/OFF
GST	Middle	← Off/Low/Middle/High
Parking mode	Off	← Off/Low/Middle/High
video Time Lapse	Off	← Off/1Second
Exposure		← Exposure Setting
White Balance	Auto	← Auto
Sync Time	>	← Time and Date Syncing from Smartphone
Reset Camera	>	← Set to Default Setting
Format SD Card	>	← Format SD Card
Firmware Version CARDVR.002		
APP Version 2.0.7		

Paraphrase:

Looping Video --- The cam recorder will record the video following the set length and save each period's video file to the TF card then repeat the loop recording and file saving process. When the TF card is nearly full, the recorder will write the most recent files and cover previous unlocked ones.

GST --- G-sensor Sensitivity Tier (High means more sensitive)

High sensitive will cause that more locked files on the TF card. Highly sensitive will cause that more locked files on the TF card. It is recommended to format the TF card monthly, to erase the older locked files, and keep enough memory space.

Parking mode --- G-sensor Sensitivity Tier during the parking period (ACC OFF)

(High means more sensitive) B+ of power cord connect to car battery DC/+12V is required for parking mode.

Video Time Lapse --- The recorder save snapshot per second during the parking period (ACC OFF), and keep work up to 12 hours then power off.

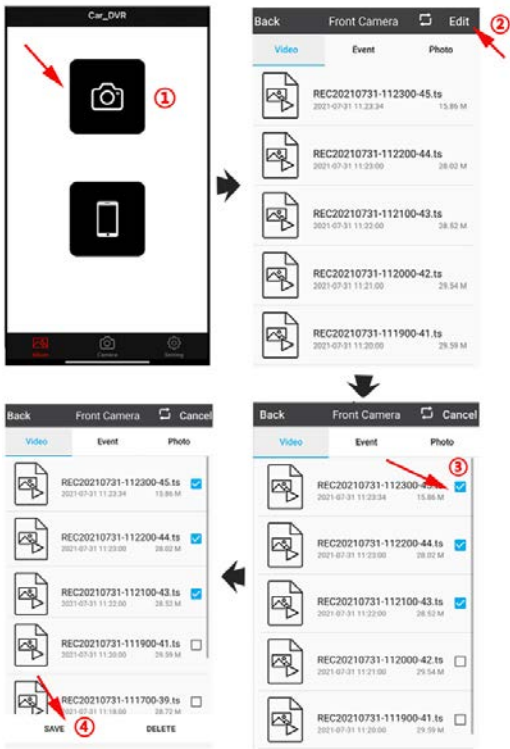
B+ of power cord connect to car battery DC/+12V is required for Time Lapse function.

Parking mode and time-lapse video function is 2 choose 1.

Format SD Card --- All the data on the card will be erase.

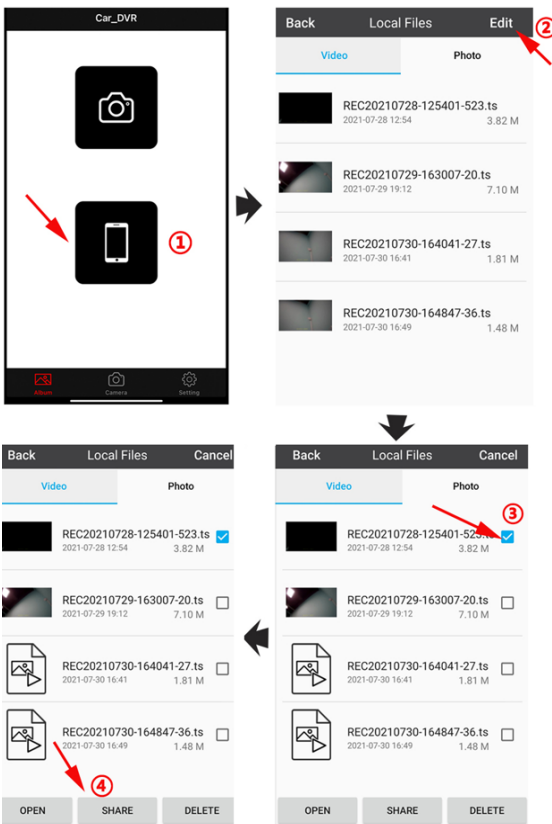
When using the card for the first time, it is recommended that you format it. To keep the recorder running smoothly, format the card on a monthly basis.

-Recorded files Transfer to Smartphone:



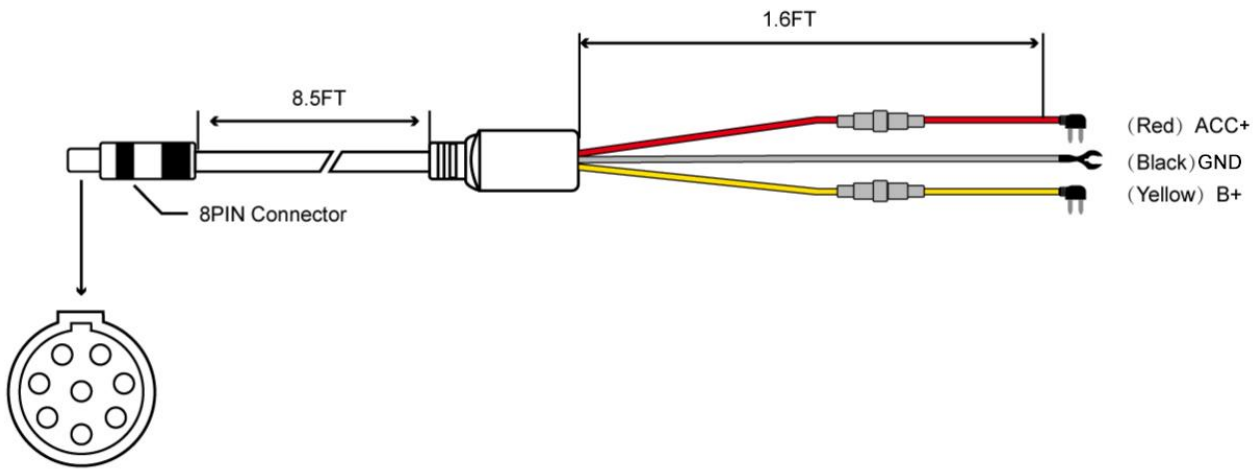
①: Click the  icon ②: Edit ③: Select video or photos ④: Save or delete

-Saved Local files management:



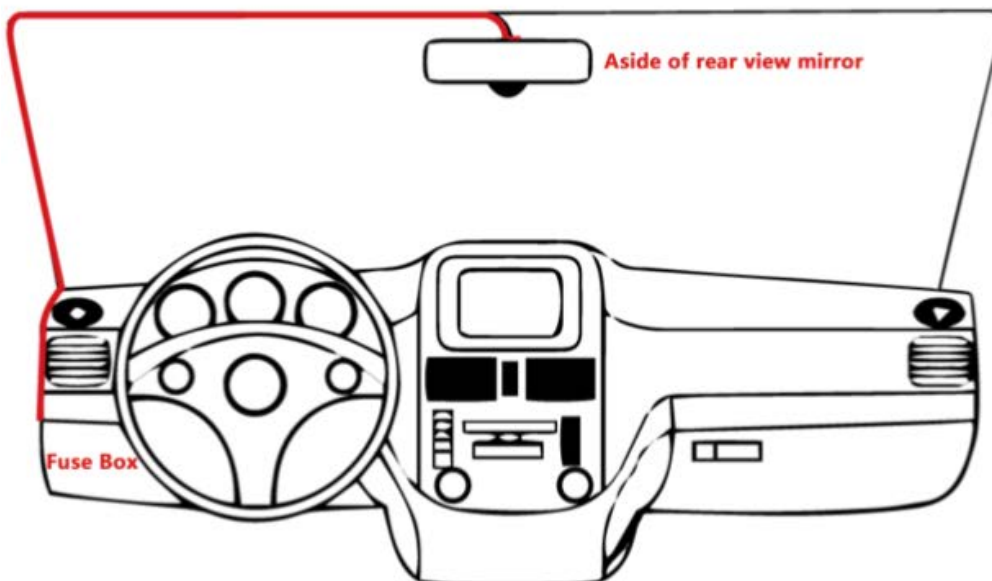
①: Click the  icon ②: Edit ③: Select video or photo ④: Open, Share or delete

<<< Wiring Diagram >>>



(Red) ACC	Connect to the ACC DC +12V Power
(Black) Gand	Connect to the vehicle metal body
(Yellow) B+	Connect to the battery constant DC+ 12V power. (Required for Parking mode / Time lapse functions)

Installation Demo





Specification



Image Processor: H.264; 1080P@30fps

Image Sensor: 2M Pixels COMS sensor

Lens: 155°Wide-Angle High-Definition Camera, F1.8

Video Recorder:

Normal recording, time-lapse recording and Collision locked

Video resolution: 1080P@30fps, 720P@30fps

Video format: .TS (H.264)

Photo resolution: 2M Pixels

TF card capacity: Class10, up to 128GB card supported.

Wi-Fi: Built-in 2.4G Wi-Fi module




Gravity Sensor: Built-in three-axis collision acceleration sensor

Microphone: Built-in, Set On/Off via APP Supported

Sound notice: Support APP to turn on/off

Working temperature: - 20°C~ +70°C (-4F ~ 158F)

Files storage path on the TF card as follows (for PC browsing):

 Event	"Event": Folder of Locked video files (during the collision or parking monitor)
 Normal	"Normal": Folder of regular video recorder files, time-lapse video included
 Photo	"Photo": Folder of Snapshots

What In the box:

- HDC869 dash cam x 1pc; - Mounting Pad x 1pc;
- Power Harness (10 ft) x 1pc; - User Manual x 1pc

1. Camera can't turn on (blue LED off)?

- ① Check the B+ and ACC wiring are correct, and make sure that the car is in ignition state.
- ② Check the 8pin power cord connector between the dash cam and the extension power cord.

2. The recorder has no video recording (Red LED no flashing), or the video has frame skipping or freezing?

- ① The TF card not been detected. Eject and the re-insert the TF card into the card slot. Then format the TF card via smartphone.
- ② Make sure to use C10 or above high-speed card.

3. There has no live-video on the APP of smartphone?

- ① The permission requirements when turn on the app for the first time must be set as "agreed", otherwise the app cannot be used normally, and it needs to be uninstalled and reinstalled to obtain the permission again.
- ② Make sure to connect to the correct Wi-Fi, that name start with "CAR-DVR****", otherwise disconnect the WIFI and reconnect to the recorder WIFI
- ③ Ensure that the smart phone does not automatically cut off the WIFI connection to the recorder.
- ④ The dash camera is power on.

